

# Ops - Division X

Boulder Mountain

WA-NES-001858

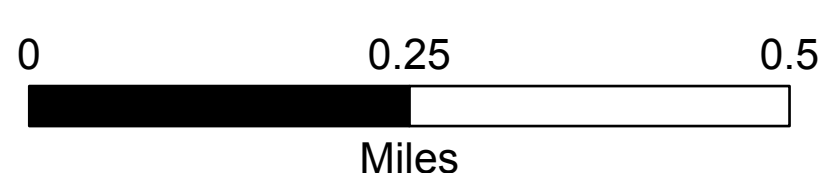
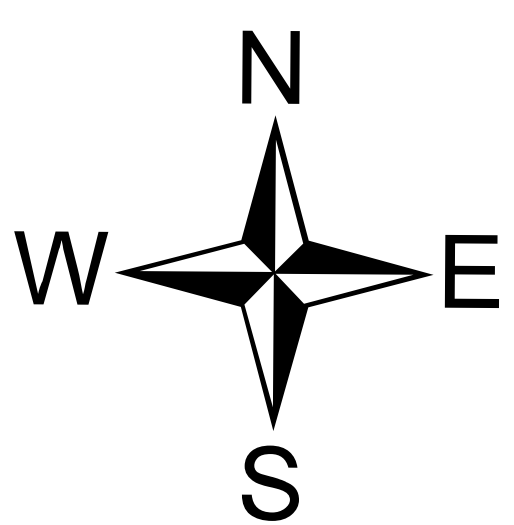
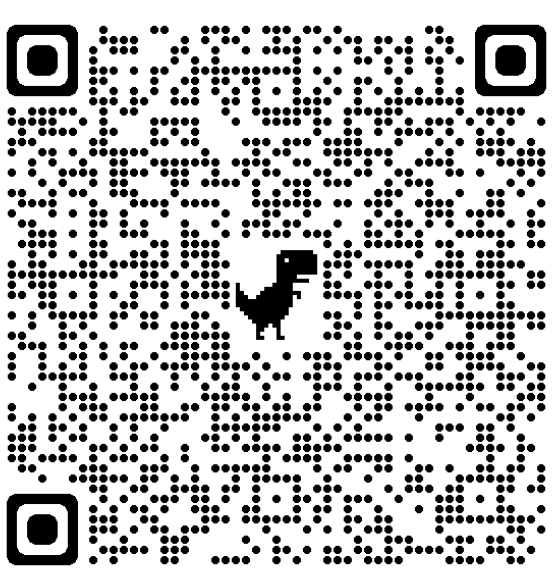
9/16/2022

2,305 acres

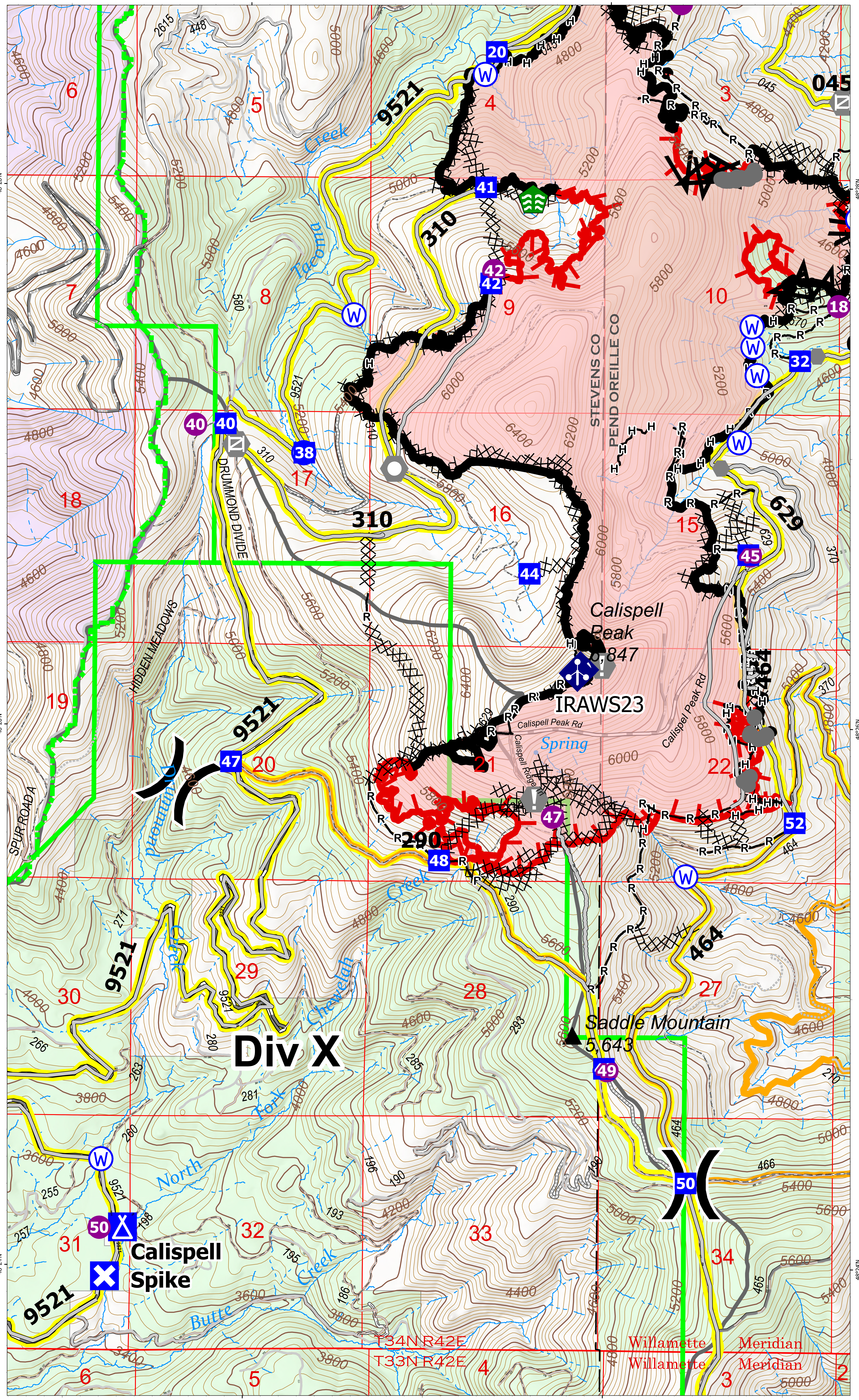
- Drop Point
- Closure
- Camp
- Helispot
- Division Break
- Value at Risk
- Other
- Landmark
- Gate
- Stream Crossing
- Mobile Weather Unit
- Repeater
- Water Source
- Completed Dozer Line
- Completed Fuel Break
- Completed Hand Line
- Completed Road as Line
- Access or Improved Road
- Other
- Temporary Flight Restriction
- Stimson Road Brushing
- Contained
- Uncontained
- Wildfire Daily Fire Perimeter
- Road - Closed
- Road - Light Duty - Dirt
- Road - Light Duty - Gravel
- Road - Light Duty - Unspecified Composition
- Road - Unimproved
- Forest Service Land
- U.S. Fish Wildlife Service Lands
- State Boundary Fill



Team 7



9/15/2022 2147  
North American 1983 Datum, Lat,Long Grid



## Div X

### Calispell Spike

Calispell Peak  
6,847

Saddle Mountain  
5,643

T34N R42E  
T33N R42E  
Willamette Meridian  
Willamette Meridian