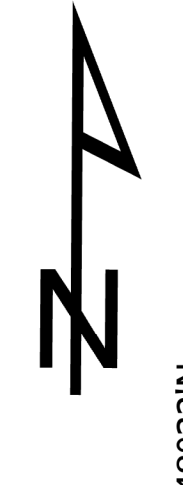


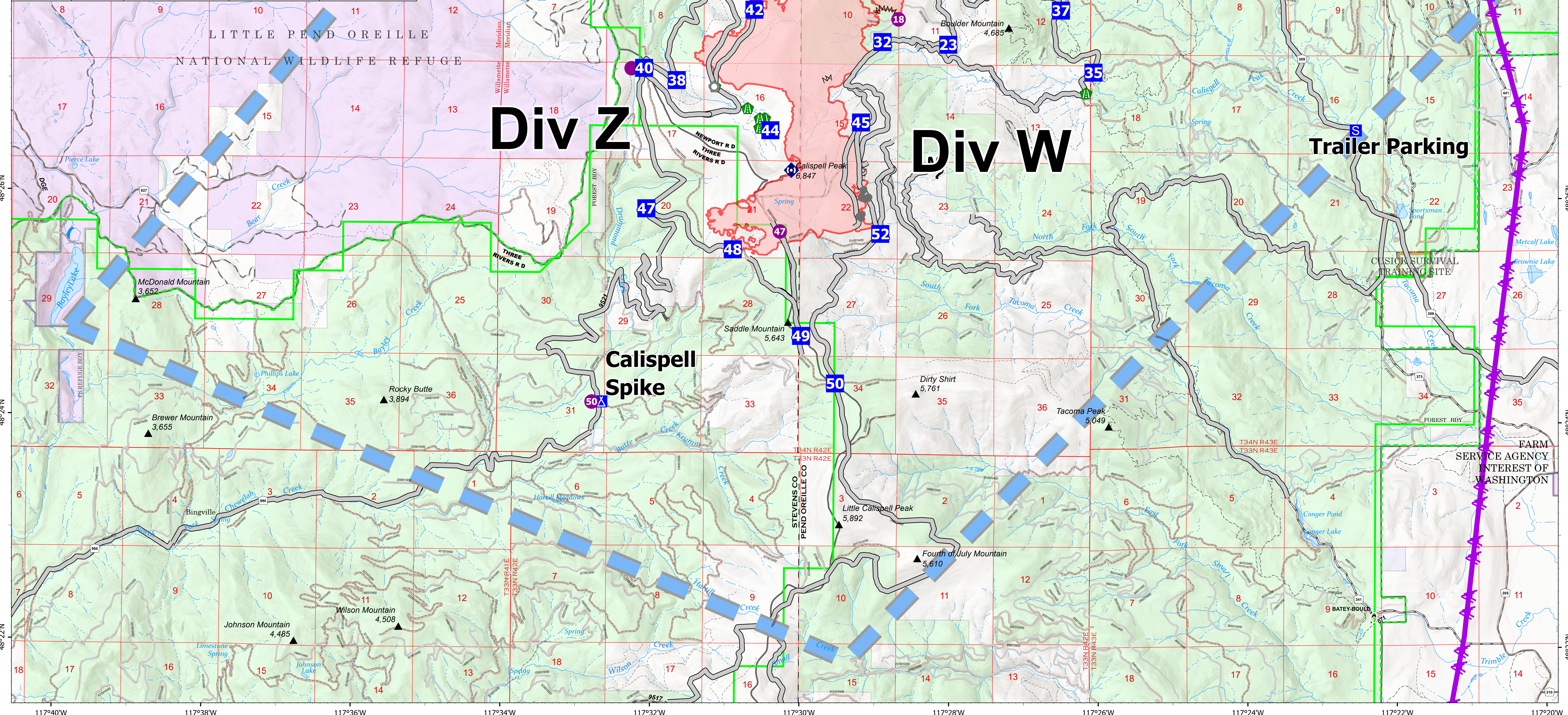
Air Operations

Boulder Mountain
WA-NES-001858
9/22/2022 24 hr
2310 acres
Acres from IR
09/17/2022 @ 2015



- Drop Point
- ▲ Camp
- S Staging Area
- Helispot
- Landmark
- ▲ Road Repair
- ◆ Repeater
- Completed Fuel Break
- Completed Mixed Construction Line
- Access or Improved Road
- Other
- Temporary Flight Restriction
- Wildfire Daily Fire Perimeter
- Forest Service Land
- State Public Lands
- Other State Lands
- U.S. Fish Wildlife Service Lands

| FC Point Type | Label | Comments | Latitude WGS84 DDM | Longitude WGS84 DDM |
|----------------|-----------------|------------------------------|--------------------|---------------------|
| Camp | Calispell Spike | | 48° 24.142' N | 117° 32.673' W |
| Dip Site | Cusick Dip | | 48° 28.240' N | 117° 21.710' W |
| Dip Site | Tacoma Dip | | 48° 27.680' N | 117° 25.300' W |
| Dip Site | Phillips Dip | | 48° 24.357' N | 117° 37.283' W |
| Division Break | Z/A | | 48° 29.209' N | 117° 31.790' W |
| Division Break | A/W | | 48° 27.494' N | 117° 27.243' W |
| Division Break | X/W | | 48° 24.312' N | 117° 29.516' W |
| Drop Point | 21 | | 48° 28.872' N | 117° 29.163' W |
| Drop Point | 22 | | 48° 27.941' N | 117° 28.247' W |
| Drop Point | 30 | | 48° 27.932' N | 117° 27.633' W |
| Drop Point | 37 | | 48° 27.652' N | 117° 26.552' W |
| Drop Point | 45 | | 48° 26.643' N | 117° 29.218' W |
| Drop Point | 50 | | 48° 24.316' N | 117° 29.545' W |
| Drop Point | 10 | | 48° 28.585' N | 117° 24.680' W |
| Drop Point | 38 | | 48° 27.011' N | 117° 31.692' W |
| Drop Point | 40 | Improve for Medivac | 48° 27.119' N | 117° 32.130' W |
| Drop Point | 20 | | 48° 28.500' N | 117° 30.636' W |
| Drop Point | 44 | DP-44 | 48° 26.569' N | 117° 30.434' W |
| Drop Point | 23 | DP 23 | 48° 27.342' N | 117° 28.059' W |
| Drop Point | 35 | | 48° 27.101' N | 117° 26.112' W |
| Drop Point | 42 | DP-42 | 48° 27.657' N | 117° 30.656' W |
| Drop Point | 47 | | 48° 25.868' N | 117° 32.088' W |
| Drop Point | 49 | | 48° 24.739' N | 117° 30.003' W |
| Drop Point | 41 | | 48° 27.998' N | 117° 30.690' W |
| Drop Point | 52 | | 48° 25.652' N | 117° 28.952' W |
| Drop Point | 32 | | 48° 27.362' N | 117° 28.939' W |
| Drop Point | 48 | | 48° 25.506' N | 117° 30.928' W |
| Helispot | 45 | Type 2 | 48° 26.640' N | 117° 29.207' W |
| Helispot | 40 | Type 2; dust abatement | 48° 27.114' N | 117° 32.297' W |
| Helispot | 50 | Type 2 | 48° 24.140' N | 117° 32.802' W |
| Helispot | 30 | Type 3, dust abatement | 48° 28.683' N | 117° 29.610' W |
| Helispot | 21 | Type 2 & 3, dust abatement | 48° 28.855' N | 117° 29.158' W |
| Helispot | 99 | Type 2 | 48° 20.846' N | 117° 16.752' W |
| Helispot | 18 | Type 2 & 3 approved | 48° 27.564' N | 117° 28.728' W |
| Helispot | 42 | Type 2 | 48° 27.690' N | 117° 30.643' W |
| Helispot | 22 | Type 2 | 48° 27.955' N | 117° 28.249' W |
| Helispot | 47 | Type 2 & 3 approved | 48° 25.669' N | 117° 30.299' W |
| Helispot | 49 | Type 2 & 3 approved | 48° 24.732' N | 117° 29.987' W |
| Staging Area | Trailer Parking | | 48° 26.597' N | 117° 22.593' W |
| Water Source | | | 48° 28.840' N | 117° 25.051' W |
| Water Source | | Needs improvement for Mark 3 | 48° 27.888' N | 117° 28.623' W |
| Water Source | | Tender full site | 48° 27.335' N | 117° 28.441' W |
| Water Source | | Draft site from stream | 48° 27.523' N | 117° 31.420' W |
| Water Source | | potential pump site | 48° 27.413' N | 117° 29.201' W |
| Water Source | | potential pump site | 48° 27.308' N | 117° 29.176' W |
| Water Source | | coffer dam | 48° 27.011' N | 117° 31.694' W |
| Water Source | | Tender full site | 48° 25.451' N | 117° 29.556' W |
| Water Source | | | 48° 19.851' N | 117° 27.073' W |
| Water Source | | | 48° 23.103' N | 117° 37.733' W |
| Water Source | | | 48° 28.416' N | 117° 30.700' W |
| Water Source | | | 48° 27.488' N | 117° 29.207' W |
| Water Source | | | 48° 27.059' N | 117° 29.274' W |
| Water Source | | | 48° 24.394' N | 117° 32.796' W |



0 0.25 0.5 1 1.5 2 Miles

NW IMT 13
9/21/2022 2004
North American 1983 Datum, Lat/Long Grid