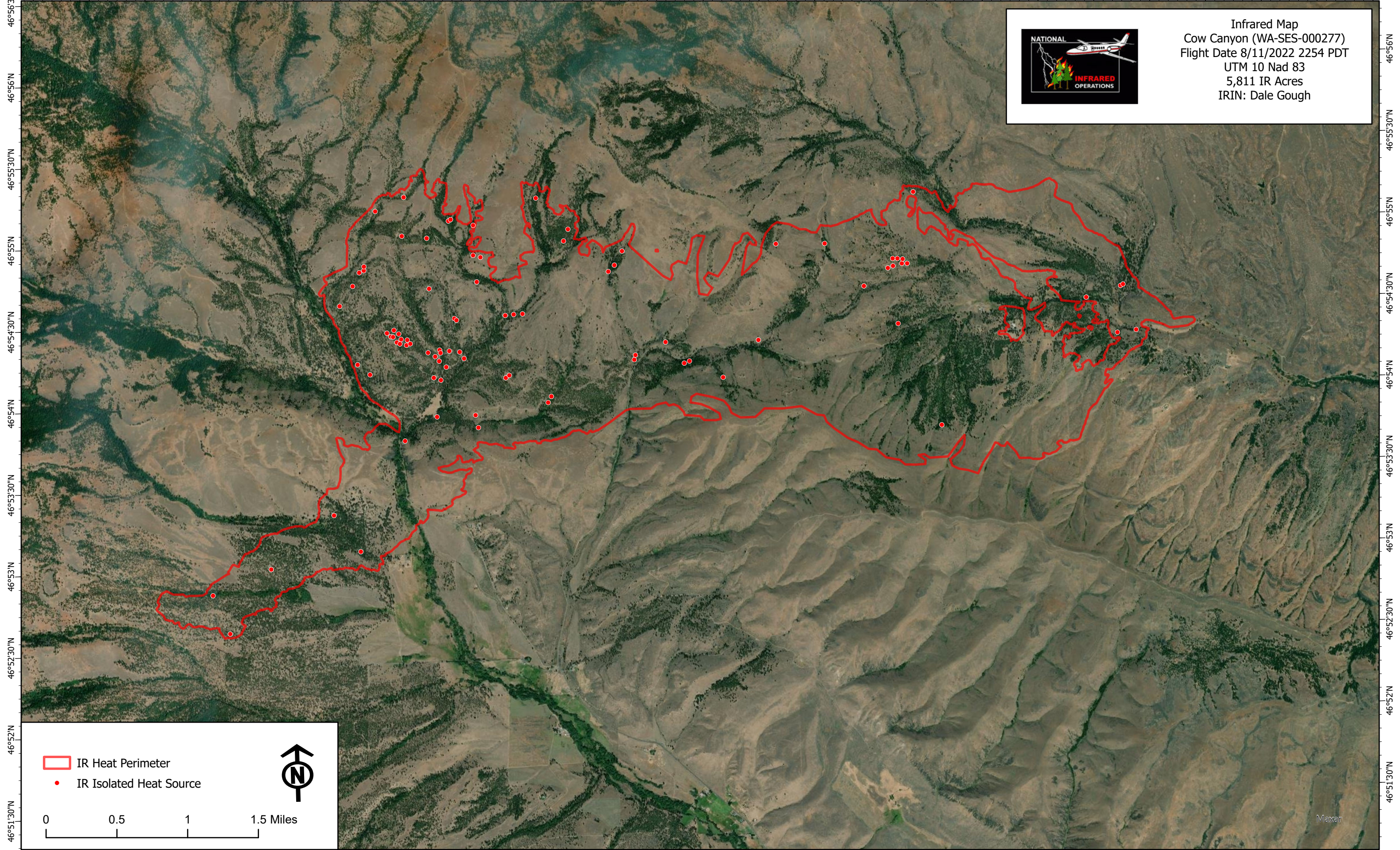






120°51'W 120°50'30"W 120°50'W 120°49'30"W 120°49'W 120°48'30"W 120°48'W 120°47'30"W 120°47'W 120°46'30"W 120°46'W 120°45'30"W 120°45'W 120°44'30"W 120°44'W 120°43'30"W 120°43'W 120°42'30"W 120°42'W 120°41'30"W 120°41'W 120°40'30"W 120°40'W 120°39'30"W 120°39'W

Infrared Map
 Cow Canyon (WA-SES-000277)
 Flight Date 8/11/2022 2254 PDT
 UTM 10 Nad 83
 5,811 IR Acres
 IRIN: Dale Gough

 IR Heat Perimeter
 IR Isolated Heat Source



0 0.5 1 1.5 Miles

120°51'W 120°50'30"W 120°50'W 120°49'30"W 120°49'W 120°48'30"W 120°48'W 120°47'30"W 120°47'W 120°46'30"W 120°46'W 120°45'30"W 120°45'W 120°44'30"W 120°44'W 120°43'30"W 120°43'W 120°42'30"W 120°42'W 120°41'30"W 120°41'W 120°40'30"W 120°40'W 120°39'30"W 120°39'W