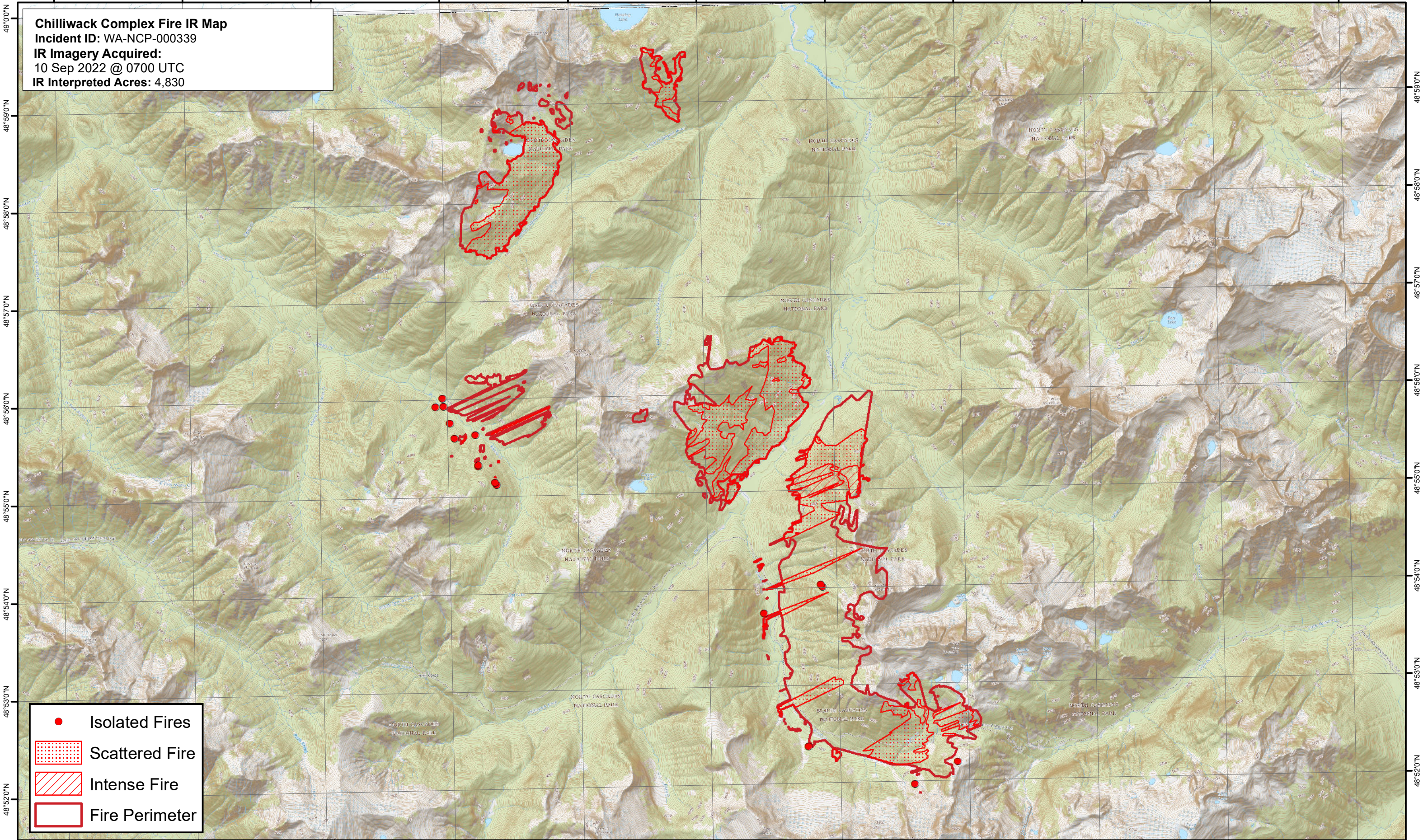


121°36'0"W 121°34'0"W 121°32'0"W 121°30'0"W 121°28'0"W 121°26'0"W 121°24'0"W 121°22'0"W 121°20'0"W 121°18'0"W 121°16'0"W

**Chilliwack Complex Fire IR Map**  
Incident ID: WA-NCP-000339  
IR Imagery Acquired:  
10 Sep 2022 @ 0700 UTC  
IR Interpreted Acres: 4,830



- Isolated Fires
- ▨ Scattered Fire
- ▨ Intense Fire
- ▭ Fire Perimeter

0 0.5 1 2 3 4 Miles

Map date: 9/10/2022

Map created with ; Projection: WGS 1984 UTM Zone 10N