

# Air Operations

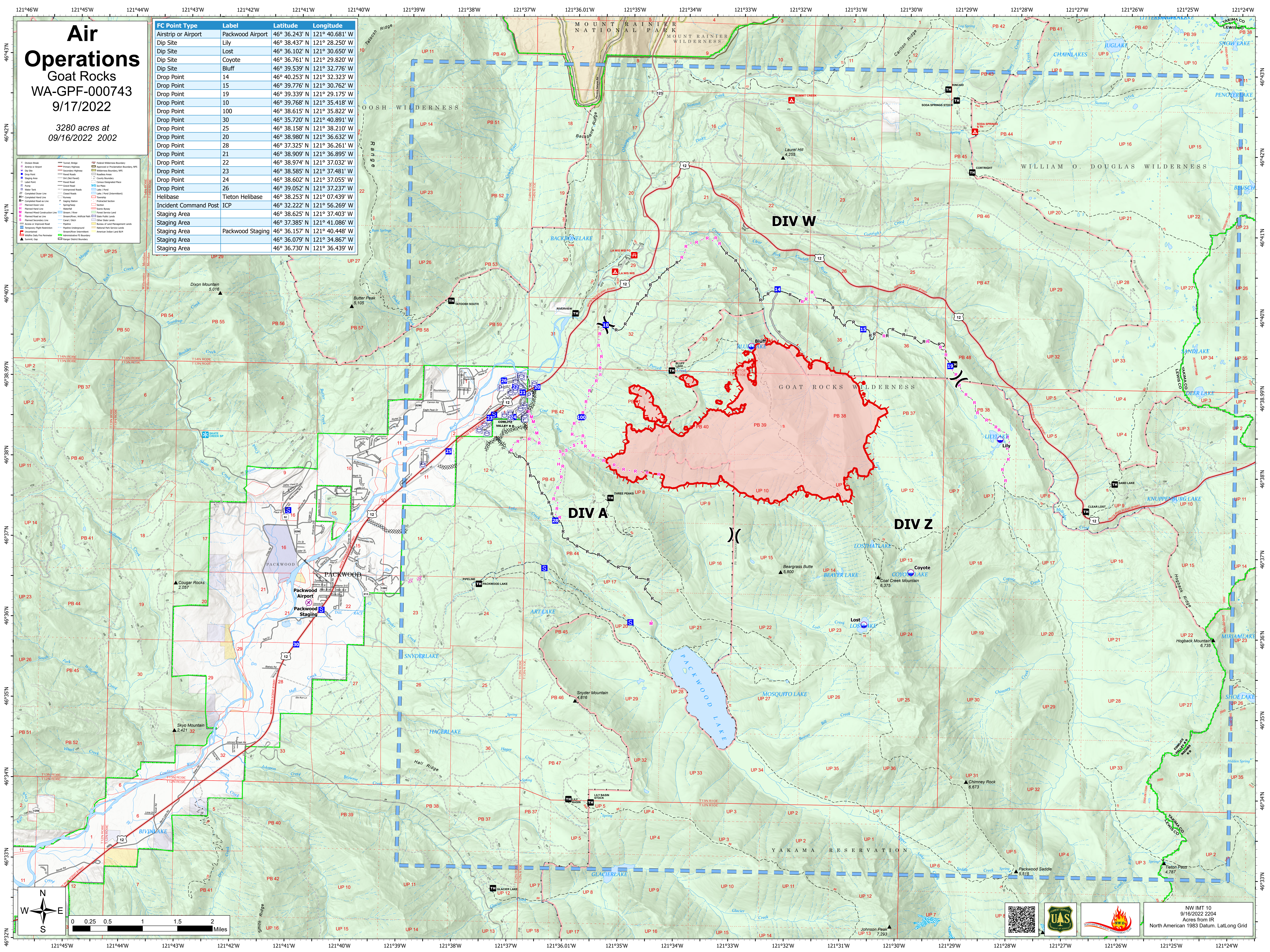
## Goat Rocks

### WA-GPF-000743

#### 9/17/2022

3280 acres at 09/16/2022 2002

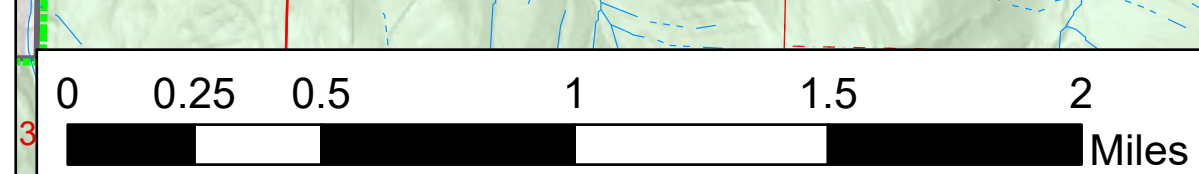
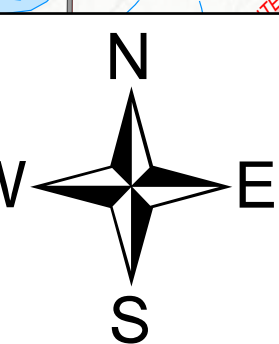
FC Point Type	Label	Latitude	Longitude
Airstrip or Airport	Packwood Airport	46° 36.243' N	121° 40.681' W
Dip Site	Lily	46° 38.437' N	121° 28.250' W
Dip Site	Lost	46° 36.102' N	121° 30.650' W
Dip Site	Coyote	46° 36.761' N	121° 29.820' W
Dip Site	Bluff	46° 39.539' N	121° 32.776' W
Drop Point	14	46° 40.253' N	121° 32.323' W
Drop Point	15	46° 39.776' N	121° 30.762' W
Drop Point	19	46° 39.339' N	121° 29.175' W
Drop Point	10	46° 39.768' N	121° 35.418' W
Drop Point	100	46° 38.615' N	121° 35.822' W
Drop Point	30	46° 35.720' N	121° 40.891' W
Drop Point	25	46° 38.158' N	121° 38.210' W
Drop Point	20	46° 38.980' N	121° 36.632' W
Drop Point	28	46° 37.325' N	121° 36.261' W
Drop Point	21	46° 38.909' N	121° 36.895' W
Drop Point	22	46° 38.974' N	121° 37.032' W
Drop Point	23	46° 38.585' N	121° 37.481' W
Drop Point	24	46° 38.602' N	121° 37.055' W
Drop Point	26	46° 39.052' N	121° 37.237' W
Helibase	Tieton Helibase	46° 38.253' N	121° 07.439' W
Incident Command Post	ICP	46° 32.222' N	121° 56.269' W
Staging Area		46° 38.625' N	121° 37.403' W
Staging Area		46° 37.385' N	121° 41.086' W
Staging Area	Packwood Staging	46° 36.157' N	121° 40.448' W
Staging Area		46° 36.079' N	121° 34.867' W
Staging Area		46° 36.730' N	121° 36.439' W



**DIV W**

**DIV A**

**DIV Z**



North American 1983 Datum, Lat/Long Grid

NW IMT 10  
9/16/2022 2204  
Acres from IR