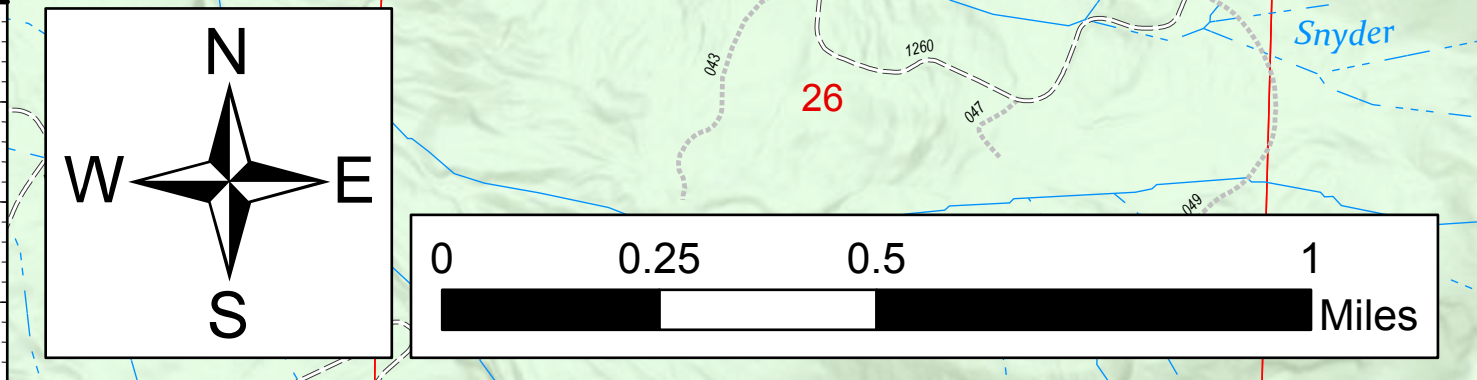
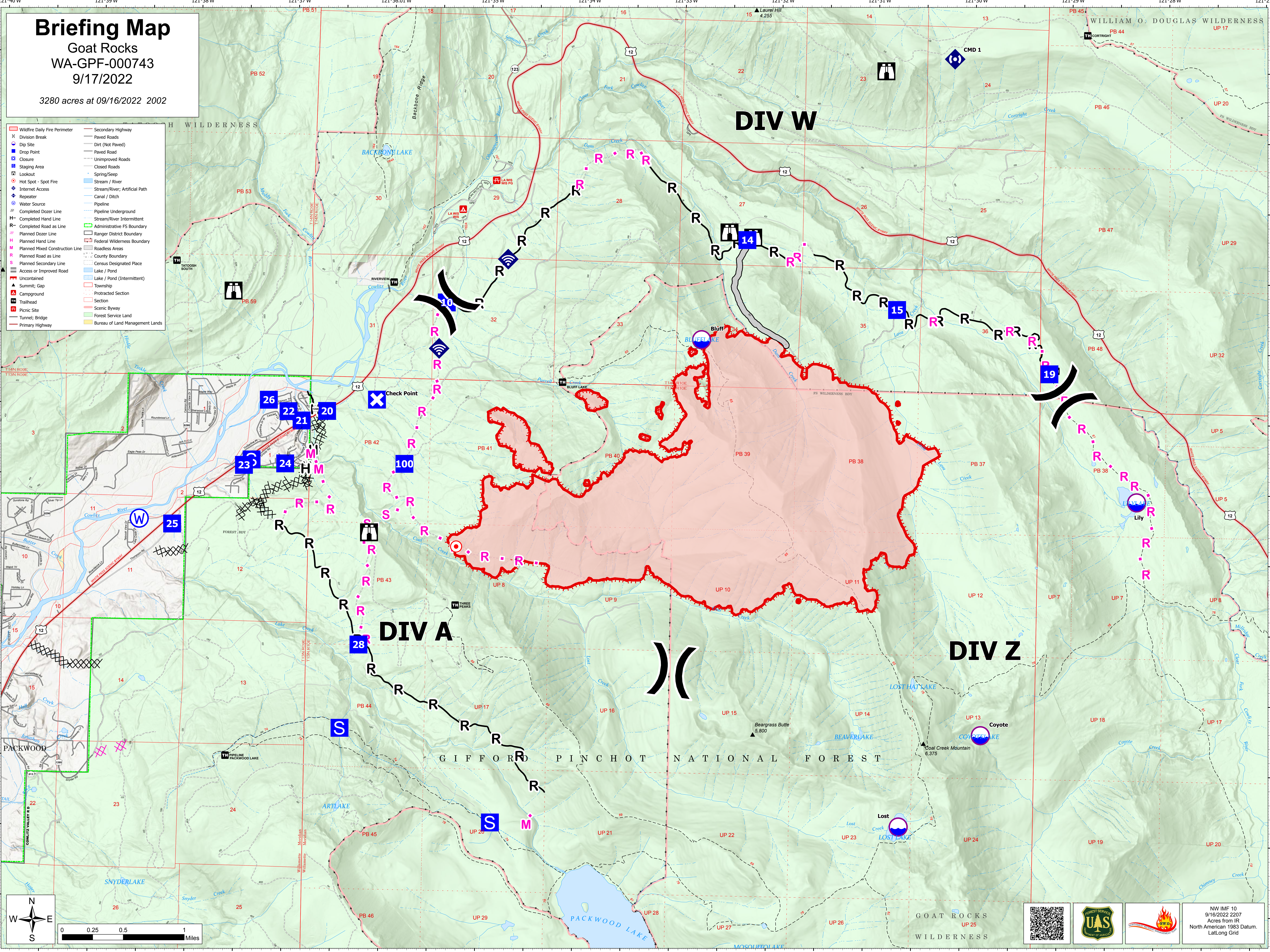


Briefing Map

Goat Rocks
WA-GPF-000743
9/17/2022

3280 acres on 09/16/2022 2002

- Wildfire Daily Fire Perimeter
- Division Break
- Dip Site
- Drop Point
- Closure
- Staging Area
- Lookout
- Hot Spot - Spot Fire
- Internet Access
- Repeater
- Water Source
- Completed Dozer Line
- Completed Hand Line
- Completed Road as Line
- Planned Dozer Line
- Planned Hand Line
- Planned Mixed Construction Line
- Planned Road as Line
- Planned Secondary Line
- Access or Improved Road
- Uncontained
- Summit; Gap
- Campground
- Trailhead
- Picnic Site
- Tunnel; Bridge
- Primary Highway
- Secondary Highway
- Paved Roads
- Dirt (Not Paved)
- Paved Road
- Unimproved Roads
- Closed Roads
- Spring/Seep
- Stream / River
- Stream/River; Artificial Path
- Canal / Ditch
- Pipeline
- Pipeline Underground
- Stream/River Intermittent
- Administrative FS Boundary
- Ranger District Boundary
- Federal Wilderness Boundary
- Roadless Areas
- County Boundary
- Census Designated Place
- Lake / Pond
- Lake / Pond (Intermittent)
- Proprietary Section
- Section
- Scenic Byway
- Forest Service Land
- Bureau of Land Management Lands



A QR code, the UAS (United States Forest Service) logo, and the NW IMF 10 logo.

NW IMF 10
9/16/2022 2207
Acres from IR
North American 1983 Datum.
Lat/Long Grid