

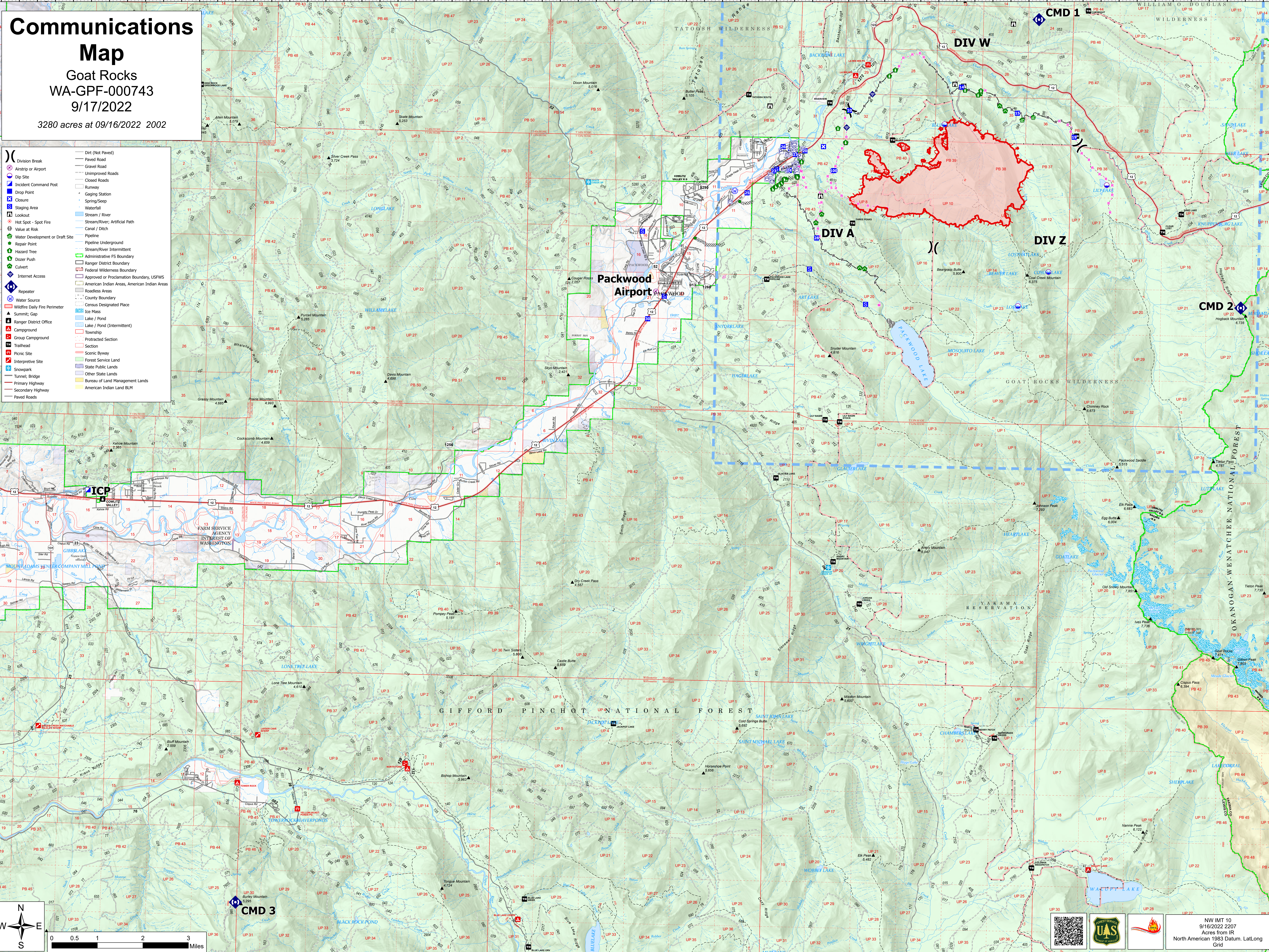
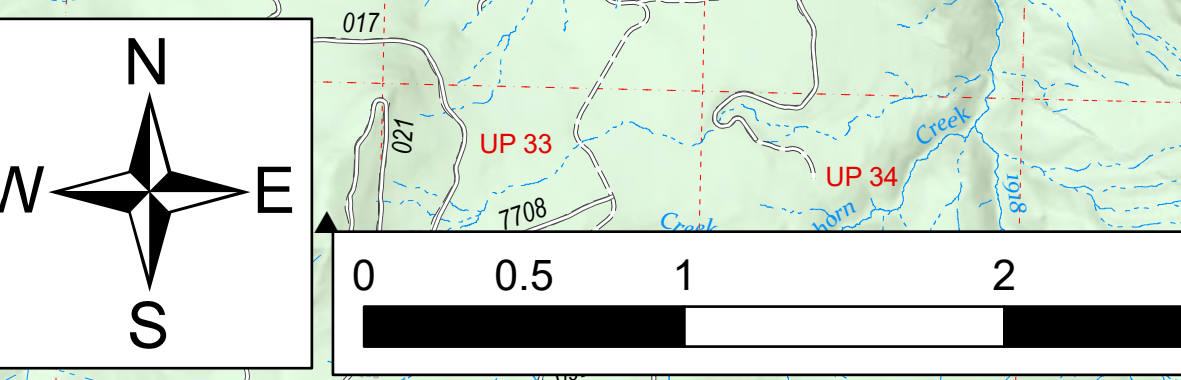
Communications

Map

Goat Rocks
WA-GPF-000743
9/17/2022

3280 acres at 09/16/2022 2002

- Division Break
- Airstrip or Airport
- Dip Site
- Incident Command Post
- Drop Point
- Closure
- Staging Area
- Lookout
- Hot Spot - Spot Fire
- Value at Risk
- Water Development or Draft Site
- Repair Point
- Hazard Tree
- Dozer Push
- Culvert
- Internet Access
- Repeater
- Water Source
- Wildfire Daily Fire Perimeter
- Summit, Gap
- Campground
- Group Campground
- Trailhead
- Picnic Site
- Interpretive Site
- Snowpark
- Tunnel, Bridge
- Primary Highway
- Secondary Highway
- Paved Roads
- Dirt (Not Paved)
- Paved Road
- Gravel Road
- Unimproved Roads
- Closed Roads
- Runway
- Gaging Station
- Spring/Seep
- Waterfall
- Stream / River
- Stream/River; Artificial Path
- Canal / Ditch
- Pipeline
- Pipeline Underground
- Stream/River Intermittent
- Administrative FS Boundary
- Ranger District Boundary
- Federal Wilderness Boundary
- Approved or Proclamation Boundary, USFWS
- American Indian Areas, American Indian Areas
- Roadless Areas
- County Boundary
- Census Designated Place
- Ice Mass
- Lake / Pond
- Lake / Pond (Intermittent)
- Township
- Protracted Section
- Section
- Scenic Byway
- Forest Service Land
- State Public Lands
- Other State Lands
- Bureau of Land Management Lands
- American Indian Land BLM



NW IMT 10
9/16/2022 2207
Acres from IR
North American 1983 Datum, LatLong
Grid