

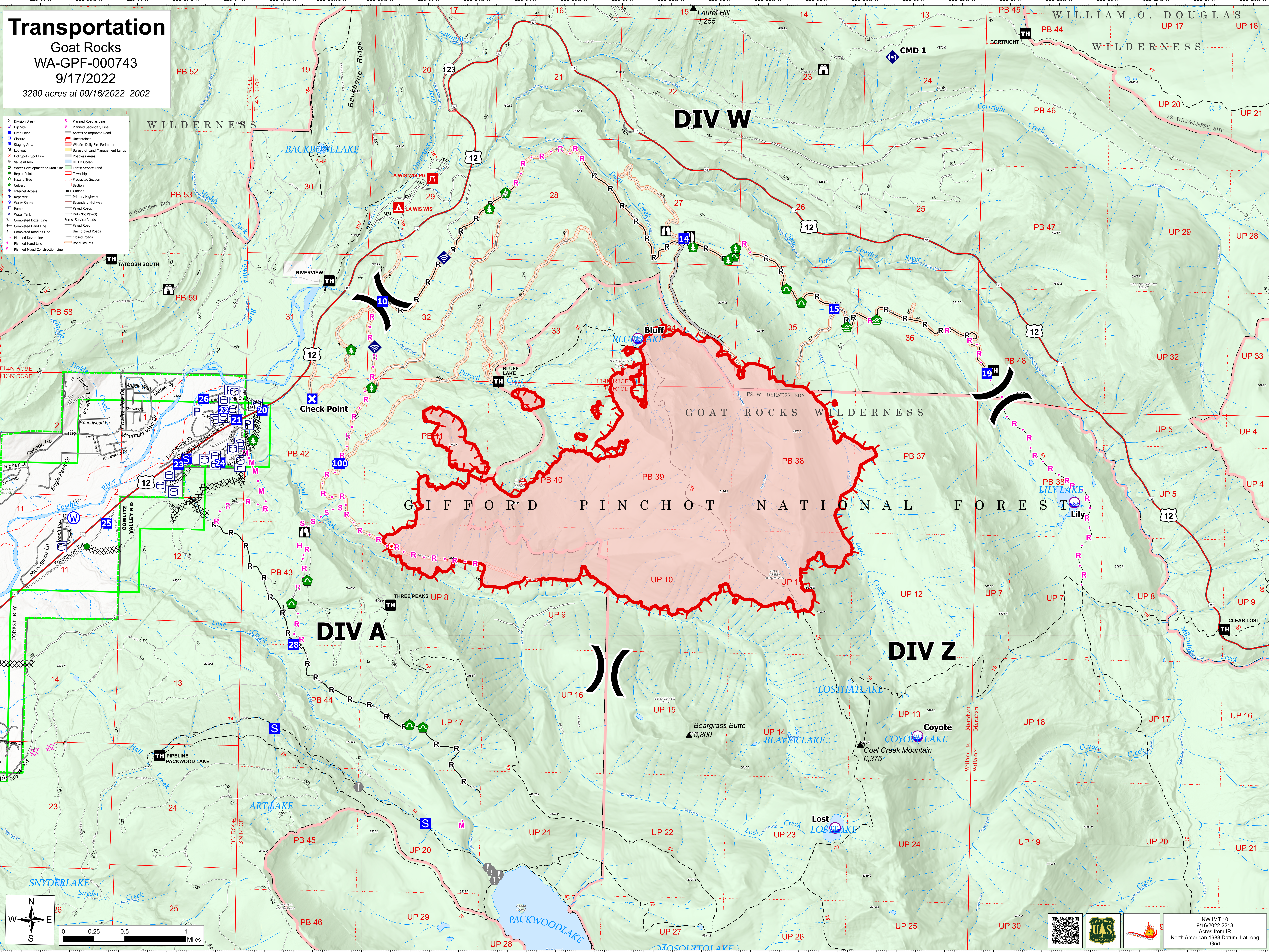
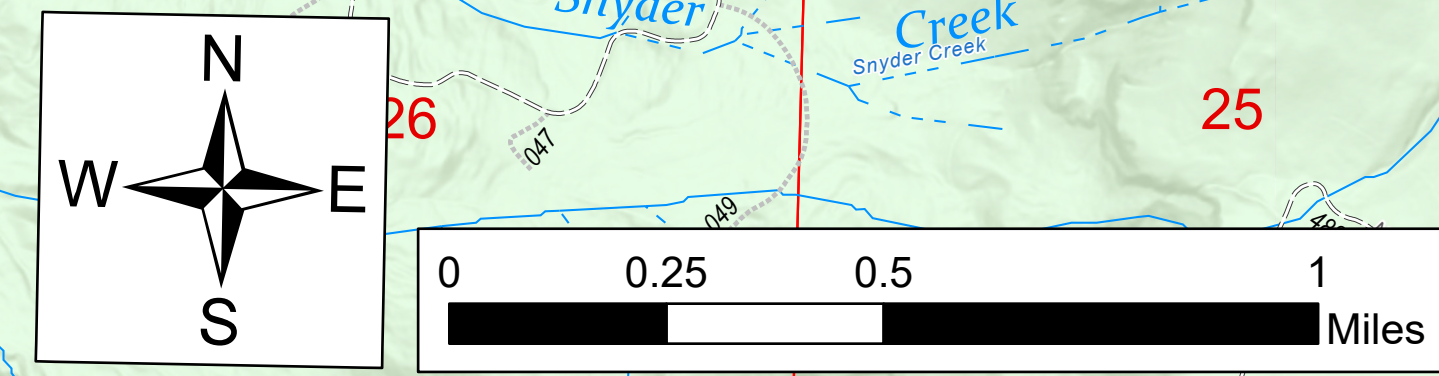
Transportation

Goat Rocks
WA-GPF-000743

9/17/2022

3280 acres at 09/16/2022 2002

- Division Break
- Dip Site
- Drop Point
- Closure
- Staging Area
- Lookout
- Hot Spot - Spot Fire
- Value at Risk
- Water Development or Draft Site
- Repair Point
- Hazard Tree
- Culvert
- Internet Access
- Repeater
- Water Source
- Pump
- Water Tank
- Completed Dozer Line
- Completed Hand Line
- Planned Dozer Line
- Planned Hand Line
- Planned Mixed Construction Line
- Planned Road as Line
- Planned Secondary Line
- Access or Improved Road
- Uncountained
- Wildfire Daily Fire Perimeter
- Bureau of Land Management Lands
- Roadless Areas
- HFLD Ocean
- Forest Service Land
- Township
- Protected Section
- Section
- HFLD Roads
- Primary Highway
- Secondary Highway
- Paved Roads
- Dark (Not Paved)
- Forest Service Roads
- Paved Road
- Unimproved Roads
- Closed Roads
- Road Closures



North American 1983 Datum, Lat/Long Grid

NW IMT 10
9/16/2022 2218
Acres from IR