

# Air Operations

## Goat Rocks

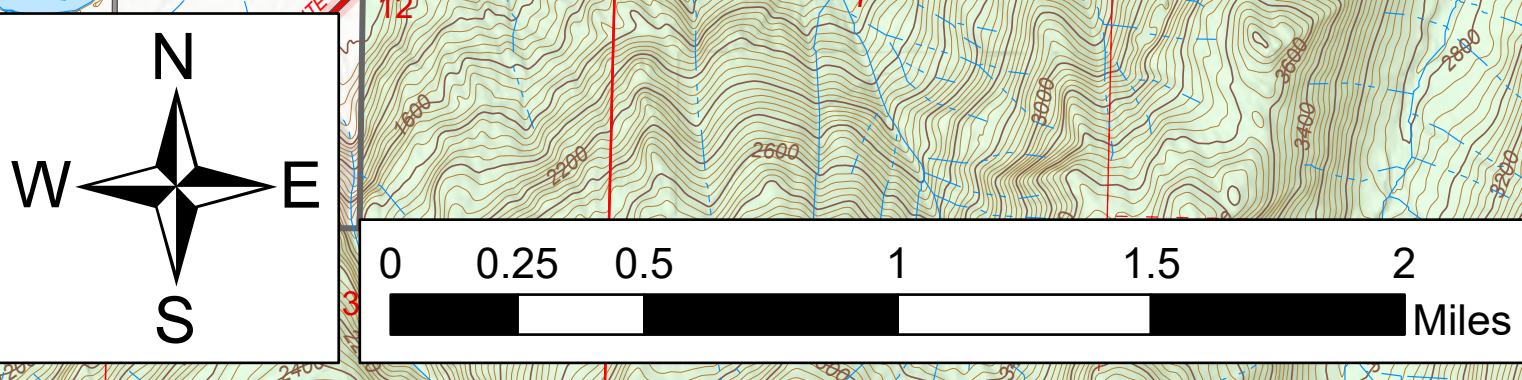
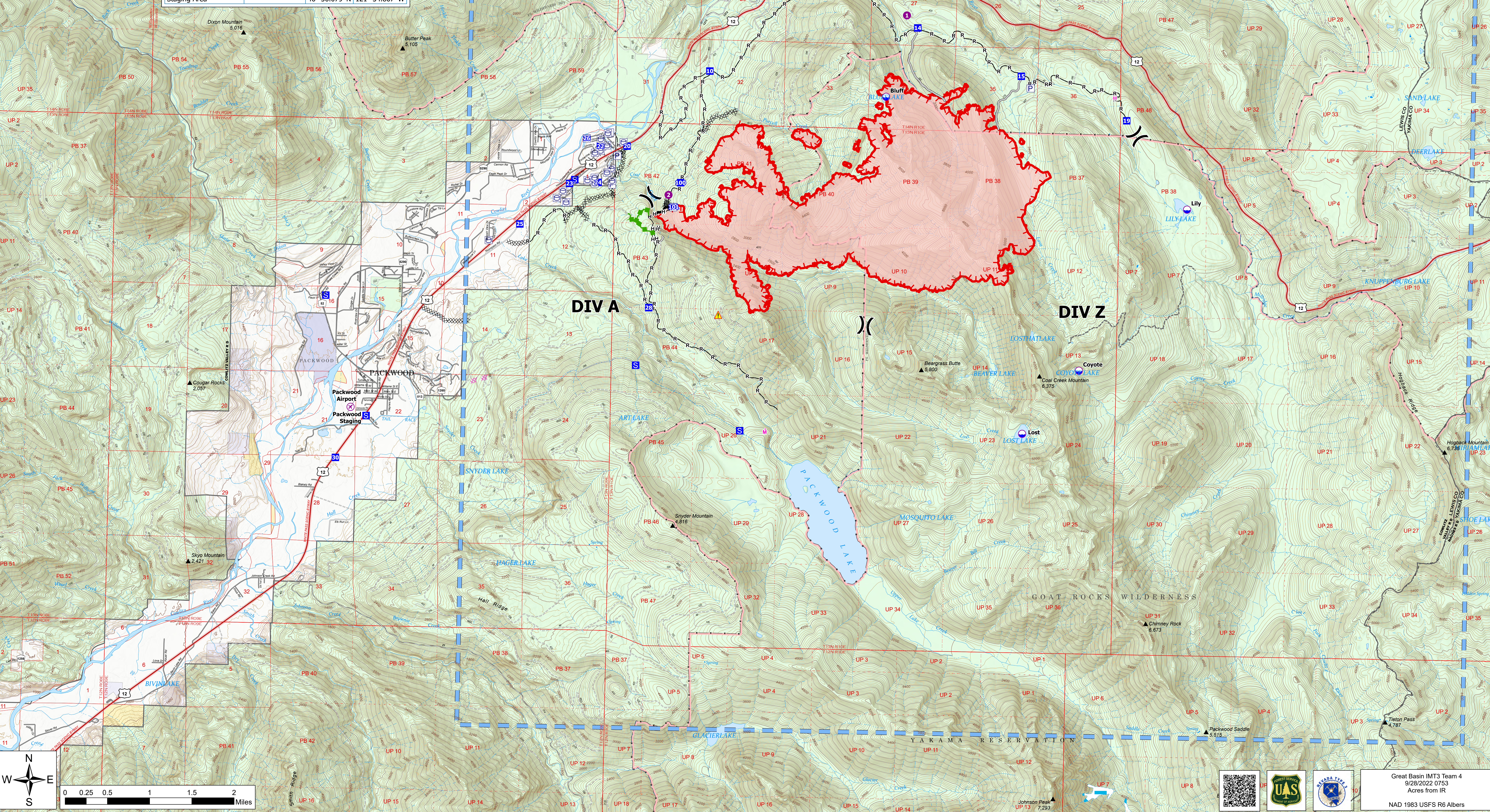
### WA-GPF-000743

#### 9/28/2022

4029 acres at  
09/27/2022 1901

FC Point Type	Label	Latitude	Longitude
Airstrip or Airport	Packwood Airport	46° 36.243' N	121° 40.681' W
Dip Site	Lily	46° 38.437' N	121° 28.250' W
Dip Site	Lost	46° 36.102' N	121° 30.650' W
Dip Site	Coyote	46° 36.761' N	121° 29.820' W
Dip Site	Bluff	46° 39.539' N	121° 32.776' W
Drop Point	14	46° 40.253' N	121° 32.324' W
Drop Point	15	46° 39.776' N	121° 30.763' W
Drop Point	19	46° 39.340' N	121° 29.176' W
Drop Point	10	46° 39.769' N	121° 35.418' W
Drop Point	100	46° 38.615' N	121° 35.822' W
Drop Point	30	46° 35.720' N	121° 40.891' W
Drop Point	25	46° 38.158' N	121° 38.210' W
Drop Point	20	46° 38.980' N	121° 36.632' W
Drop Point	28	46° 37.325' N	121° 36.261' W
Drop Point	22	46° 38.974' N	121° 37.032' W
Drop Point	23	46° 38.585' N	121° 37.481' W
Drop Point	24	46° 38.602' N	121° 37.055' W
Drop Point	26	46° 39.052' N	121° 37.237' W
Drop Point	101	46° 38.366' N	121° 35.919' W
Hazard		46° 37.265' N	121° 35.223' W
Helispot	1	46° 40.380' N	121° 32.489' W
Helispot	2	46° 38.487' N	121° 35.998' W
Incident Command Post	ICP	46° 32.222' N	121° 56.269' W
Staging Area		46° 38.625' N	121° 37.403' W
Staging Area		46° 37.385' N	121° 41.086' W
Staging Area	Packwood Staging	46° 36.157' N	121° 40.448' W
Staging Area		46° 36.730' N	121° 36.439' W
Staging Area		46° 36.079' N	121° 34.867' W

- Division Break
- Airstrip or Airport
- Dip Site
- Drop Point
- Staging Area
- Hazard
- Label Point
- Pump
- Water Tank
- Completed Door Line
- Completed Hand Line
- Completed Road as Line
- Planned Door Line
- Planned Hand Line
- Planned Mixed Construction Line
- Access or Improved Road
- Other
- Escape Route
- Temporary Flight Restriction
- Uncontaminated
- Wildfire Daily Fire Perimeter
- Summit Gap
- Federal Wilderness Boundary
- Approved or Proclamation Boundary, NPS
- Wilderness Boundary, NPS
- Roadless Areas
- Ice Mass
- Lake / Pond
- Lake / Pond (Intermittent)
- Scored River
- Forest Service Land
- American Indian Land BLM



Great Basin IMT3 Team 4  
9/28/2022 0753  
Acres from IR  
NAD 1983 USFS R6 Albers