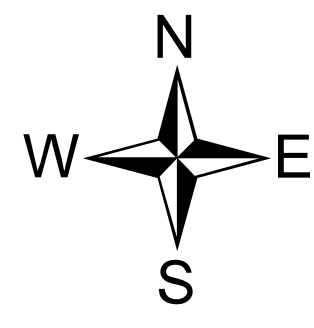


Operations - Mobile Map

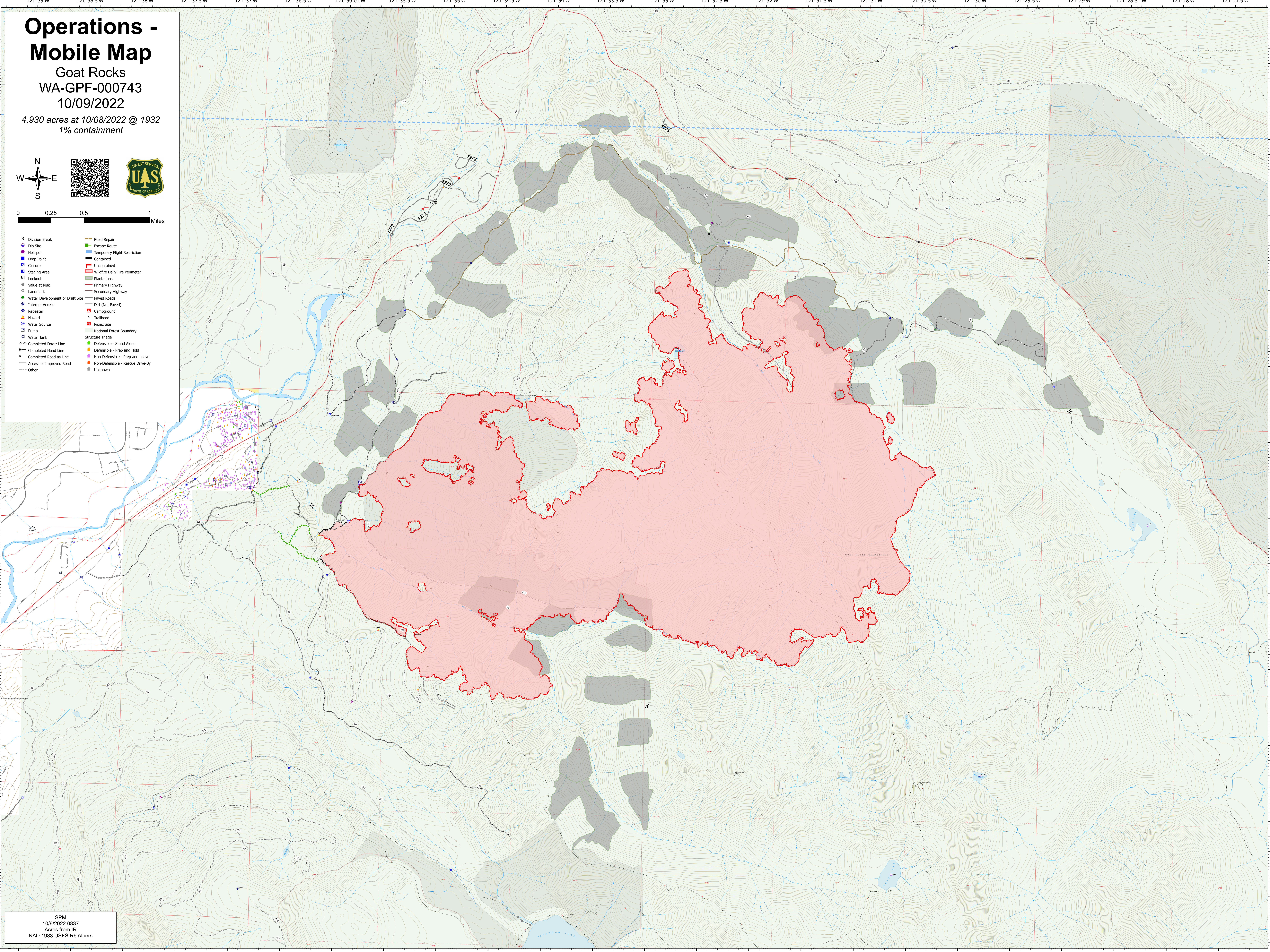
Goat Rocks
WA-GPF-000743
10/09/2022

4,930 acres at 10/08/2022 @ 1932
1% containment



0 0.25 0.5 1 Miles

- | | |
|-----------------------------------|------------------------------------|
| ⌘ Division Break | — Road Repair |
| ● Dip Site | — Escape Route |
| ● Helispot | — Temporary Flight Restriction |
| ● Drop Point | — Contained |
| ■ Closure | — Uncontained |
| ■ Staging Area | — Wildfire Daily Fire Perimeter |
| □ Lookout | — Plantations |
| ○ Value at Risk | — Primary Highway |
| ○ Landmark | — Secondary Highway |
| ● Water Development or Draft Site | — Paved Roads |
| ● Internet Access | — Dirt (Not Paved) |
| ● Repeater | ■ Campground |
| ● Water Source | ● Trailhead |
| ● Pump | ● Mine Site |
| ● Water Tank | — National Forest Boundary |
| — Completed Dozer Line | ● Structure Triage |
| — Completed Hand Line | ● Defensible - Stand Alone |
| — Completed Road as Line | ● Defensible - Prep and Hold |
| — Access or Improved Road | ● Non-Defensible - Prep and Leave |
| — Other | ● Non-Defensible - Rescue Drive-By |
| | ■ Unknown |



SPM
10/9/2022 0837
Acres from IR
NAD 1983 USFS R6 Albers