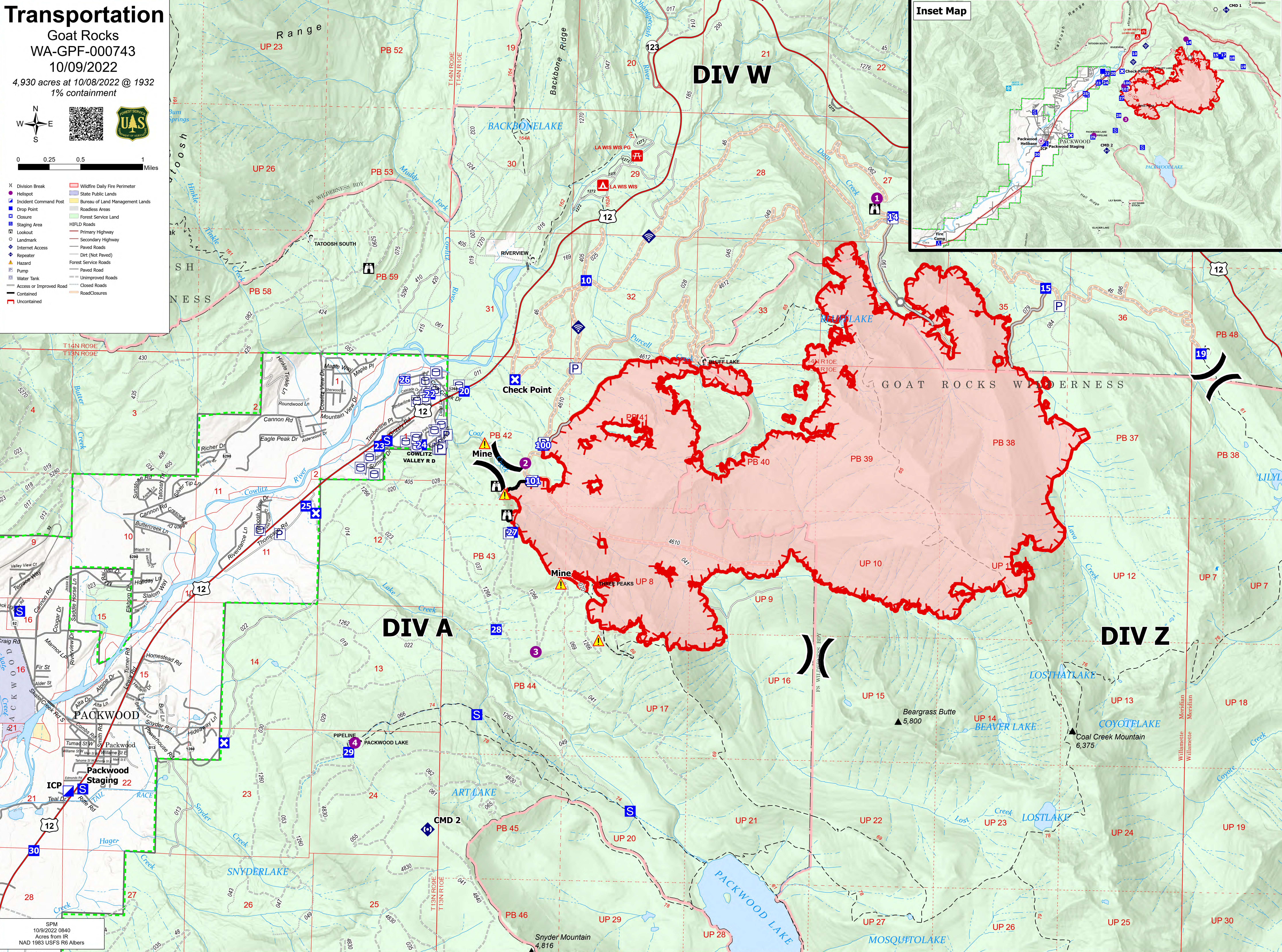
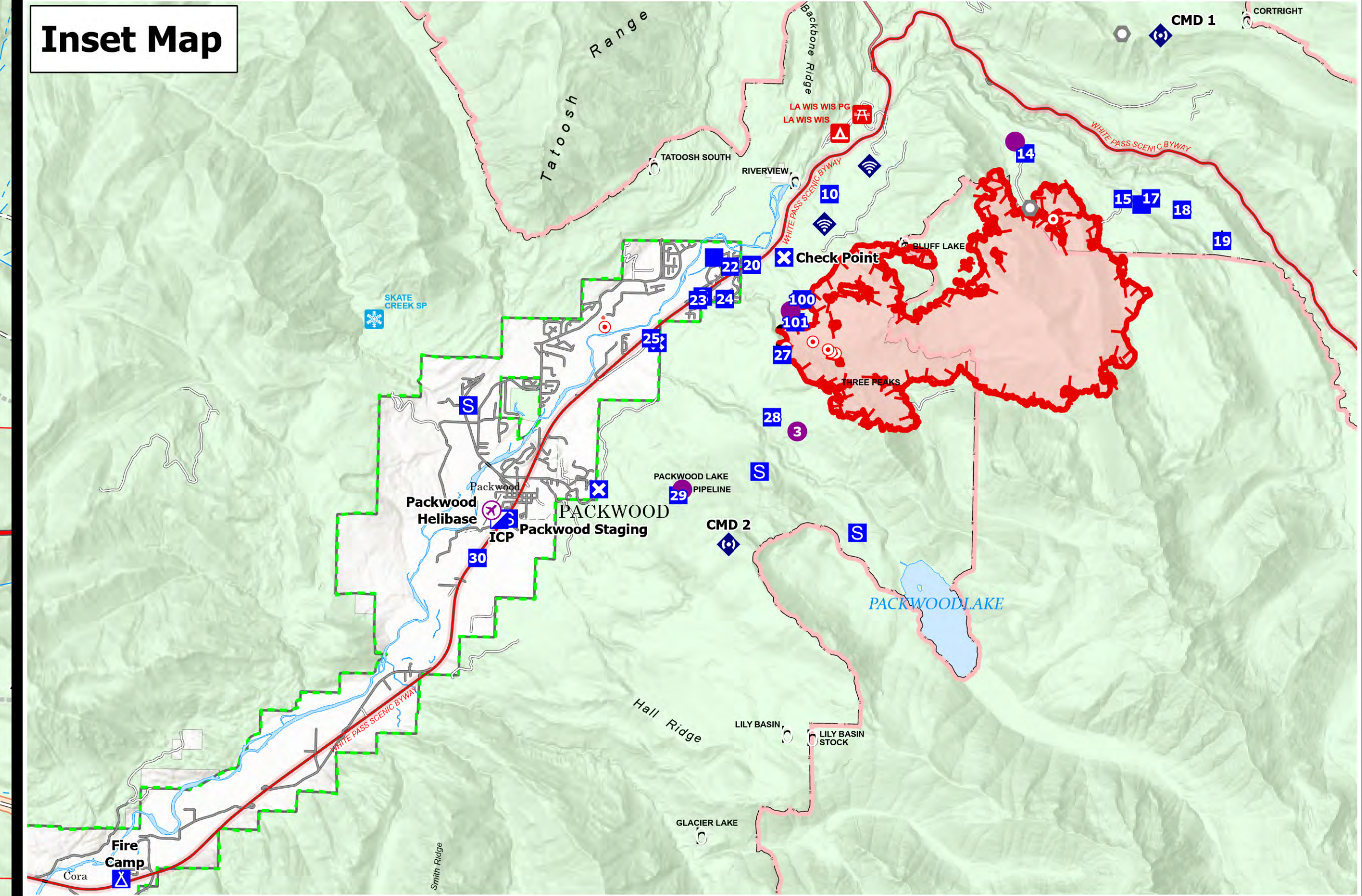


Transportation
 Goat Rocks
 WA-GPF-000743
 10/09/2022
 4,930 acres at 10/08/2022 @ 1932
 1% containment

0 0.25 0.5 1 Miles

UAS
 UNITED STATES
 FOREST SERVICE

- | | |
|---------------------------|---------------------------------|
| X Division Break | Wildfire Daily Fire Perimeter |
| ● Helispot | State Public Lands |
| ■ Incident Command Post | Bureau of Land Management Lands |
| ■ Drop Point | Roadless Areas |
| ■ Closure | Forest Service Land |
| ■ Staging Area | HIFLD Roads |
| ○ Lookout | Primary Highway |
| ○ Landmark | Secondary Highway |
| ◆ Internet Access | Paved Roads |
| ◆ Repeater | Dirt (Not Paved) |
| ▲ Hazard | Forest Service Roads |
| ■ Pump | Paved Road |
| ■ Water Tank | Unimproved Roads |
| ■ Access or Improved Road | Closed Roads |
| ■ Contained | Road Closures |
| ■ Uncontained | |



SPM
 10/9/2022 0840
 Acres from IR
 NAD 1983 USFS R6 Albers