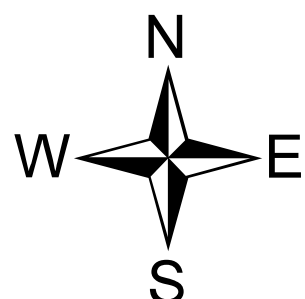


Operations - Mobile Map

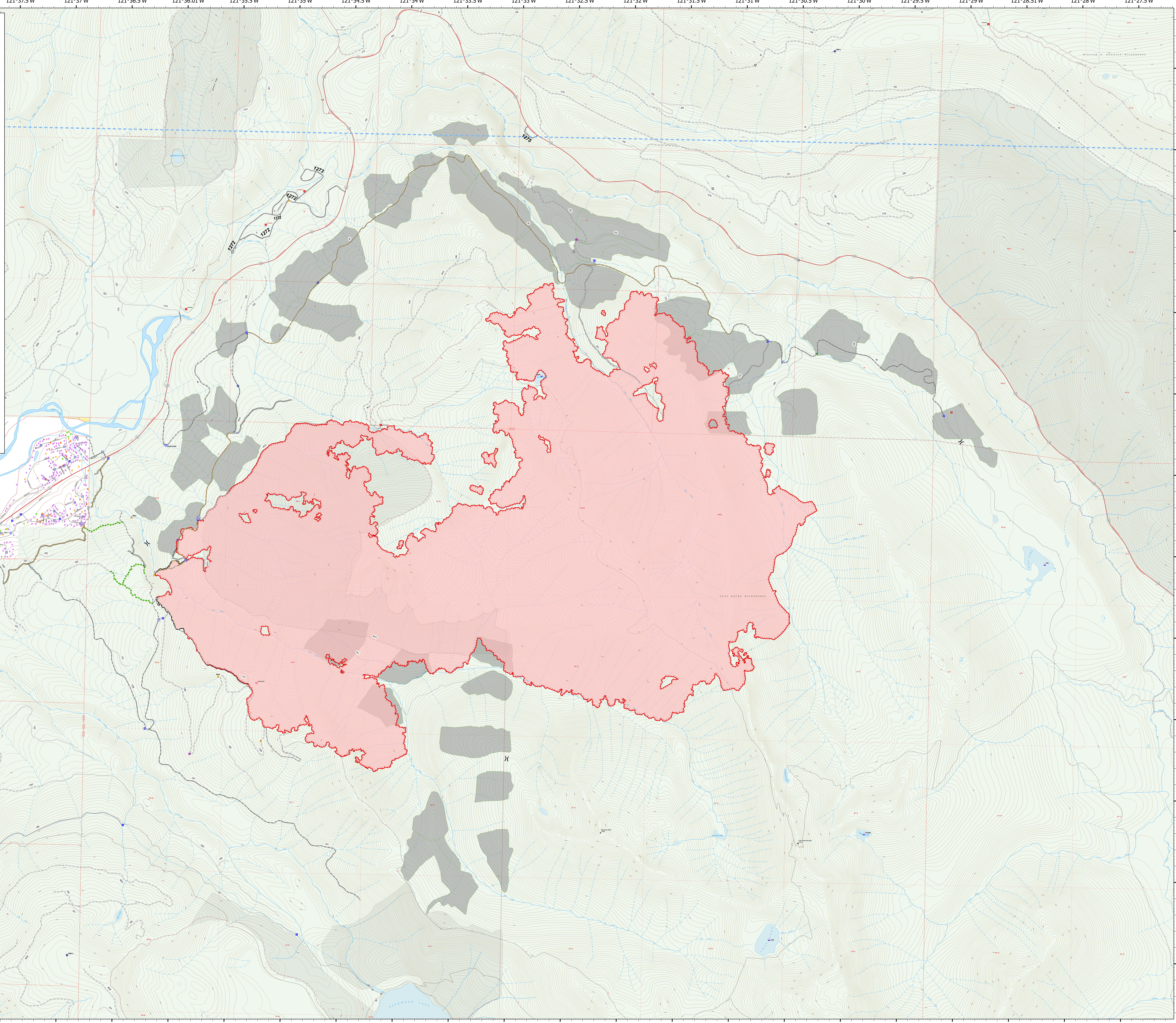
Goat Rocks
WA-GPF-000743
10/14/2022

5,199 acres at 10/13/2022 @ 1944
2% containment



0 0.25 0.5 1 Miles

- | | |
|-----------------------------------|------------------------------------|
| ⌘ Division Break | ⬆ Road Repair |
| ⊙ Aerial Hazard | ⬆ Escape Route |
| ⊙ Dip Site | ⬆ Temporary Flight Restriction |
| ⊙ Helipad | ⬆ Contained |
| ⊙ Drop Point | ⬆ Uncontained |
| ⊙ Closure | ⬆ Wildfire Daily Fire Perimeter |
| ⊙ Staging Area | ⬆ Plantations |
| ⊙ Lookout | ⬆ Primary Highway |
| ⊙ Value at Risk | ⬆ Secondary Highway |
| ⊙ Landmark | ⬆ Paved Roads |
| ⊙ Water Development or Draft Site | ⬆ Dirt (Not Paved) |
| ⊙ Internet Access | ⬆ Campground |
| ⊙ Repeater | ⬆ Trailhead |
| ⊙ Hazard | ⬆ Historic Site |
| ⊙ Water Source | ⬆ National Forest Boundary |
| ⊙ Pump | ⬆ Structure Triage |
| ⊙ Water Tank | ⬆ Defensible - Stand Alone |
| ⊙ Completed Dozer Line | ⬆ Defensible - Prep and Hold |
| ⊙ Completed Hand Line | ⬆ Non-Defensible - Prep and Leave |
| ⊙ Completed Road as Line | ⬆ Non-Defensible - Rescue Drive-By |
| ⊙ Access or Improved Road | ⬆ Unknown |
| ⊙ Repair Line | |



GT
10/14/2022 0610
Acres from IR
NAD 1983 USFS R6 Albers