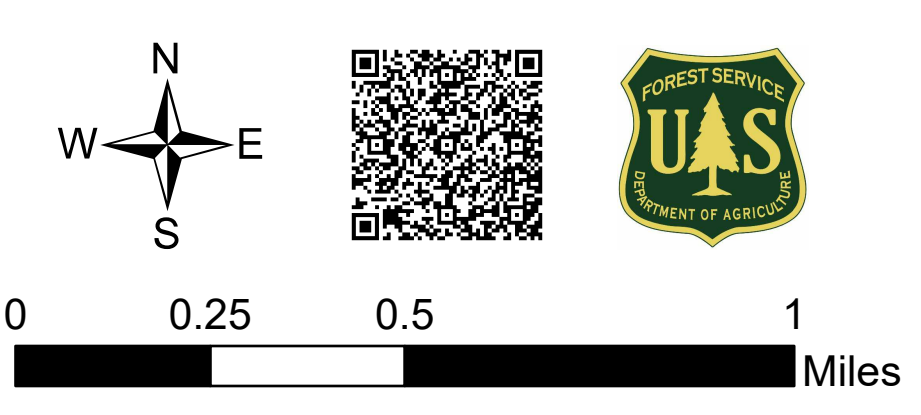


Operations

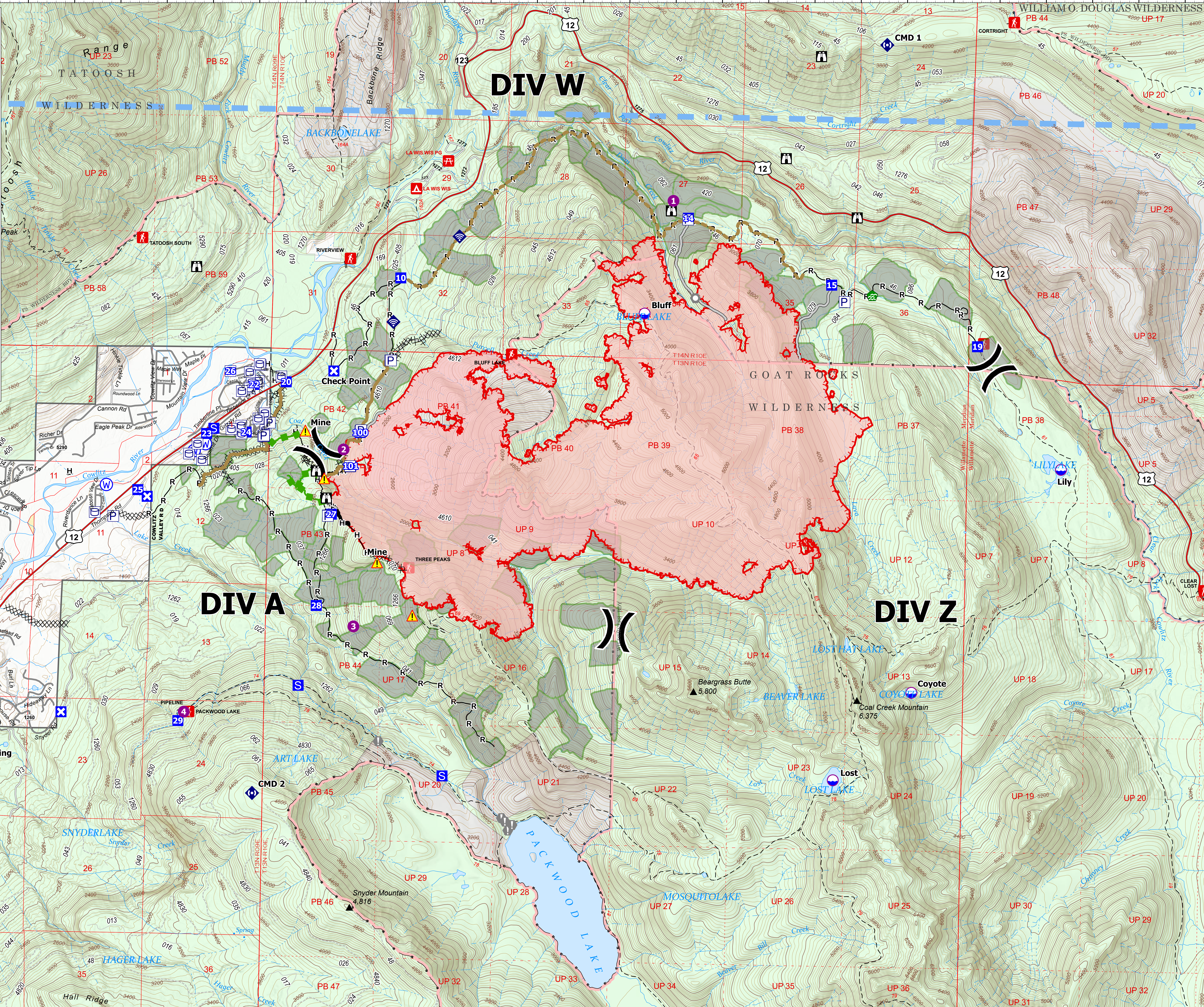
Goat Rocks
WA-GPF-000743
10/14/2022

5,199 acres at
10/13/2022 @ 1944
2% containment



	Division Break
	Access or Improved Road
	Road Repair
	Escarpment
	Road Closure
	Temporary Flight Restriction
	Contained
	Uncontained
	Wildfire Daily Fire Perimeter
	Summit
	Summit Gap
	Staging Area
	Lookout
	Value at Risk
	Landmark
	Water Development or Draft Site
	Internet Access
	Helicopter
	Hazard
	Water Source
	Pump
	Water Tank
	Completed Doser Line
	Completed Hand Line
	Access or Improved Road
	Road Repair
	Escarpment
	Road Closure
	Temporary Flight Restriction
	Contained
	Uncontained
	Wildfire Daily Fire Perimeter
	Summit
	Summit Gap
	Staging Area
	Lookout
	Value at Risk
	Landmark
	Water Development or Draft Site
	Internet Access
	Helicopter
	Hazard
	Water Source
	Pump
	Water Tank
	Completed Doser Line

121°41'W 121°40.5'W 121°40'W 121°39.5'W 121°39'W 121°38.5'W 121°38'W 121°37.5'W 121°37'W 121°36.5'W 121°36.01'W 121°35.5'W 121°35'W 121°34.5'W 121°34'W 121°33.5'W 121°33'W 121°32.5'W 121°32'W 121°31.5'W 121°31'W 121°30.5'W 121°30'W 121°29.5'W 121°29'W 121°28.5'W 121°28'W 121°27.5'W 121°27'W



GT
10/14/2022 0611
Acres from IPI
NAD 1983 USFS R6 Albers