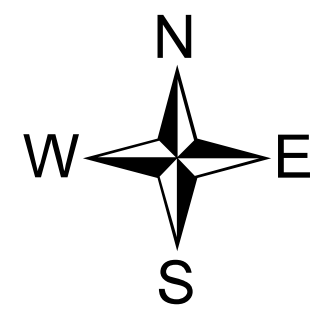


# Operations - Mobile Map

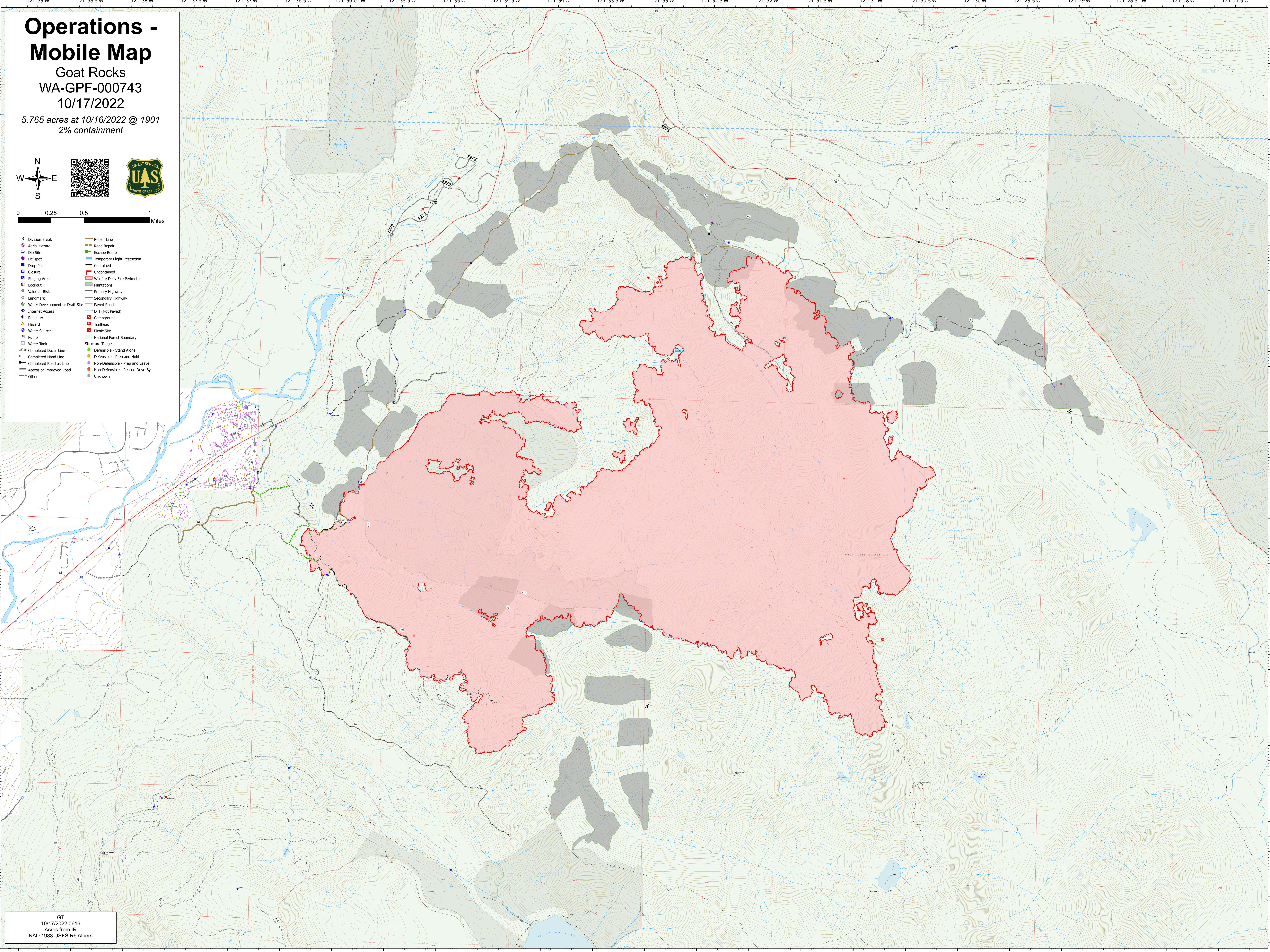
Goat Rocks  
WA-GPF-000743  
10/17/2022

5,765 acres at 10/16/2022 @ 1901  
2% containment



0 0.25 0.5 1 Miles

- |                                   |                                    |
|-----------------------------------|------------------------------------|
| ⊗ Division Break                  | — Repair Line                      |
| ⊗ Aerial Hazard                   | — Road Repair                      |
| ⊗ Dip Site                        | — Road Repair                      |
| ⊗ Helispot                        | — Escape Route                     |
| ⊗ Drop Point                      | — Temporary Flight Restriction     |
| ⊗ Closure                         | — Contained                        |
| ⊗ Staging Area                    | — Uncontained                      |
| ⊗ Lookout                         | — Wildfire Daily Fire Perimeter    |
| ⊗ Value at Risk                   | — Plantations                      |
| ⊗ Landmark                        | — Primary Highway                  |
| ⊗ Water Development or Draft Site | — Secondary Highway                |
| ⊗ Internet Access                 | — Paved Roads                      |
| ⊗ Repeater                        | — Dirt (Not Paved)                 |
| ⊗ Hazard                          | — Campground                       |
| ⊗ Water Source                    | — Trailhead                        |
| ⊗ Pump                            | — Picnic Site                      |
| ⊗ Water Tank                      | — National Forest Boundary         |
| ⊗ Completed Dozer Line            | — Structure Triage                 |
| ⊗ Completed Hand Line             | — Defensible - Stand Alone         |
| ⊗ Completed Road as Line          | — Defensible - Prep and Hold       |
| ⊗ Access or Improved Road         | — Non-Defensible - Prep and Leave  |
| ⊗ Other                           | — Non-Defensible - Rescue Drive-By |
|                                   | — Unknown                          |



GT  
10/17/2022 0616  
Acres from IR  
NAD 1983 USFS R6 Albers