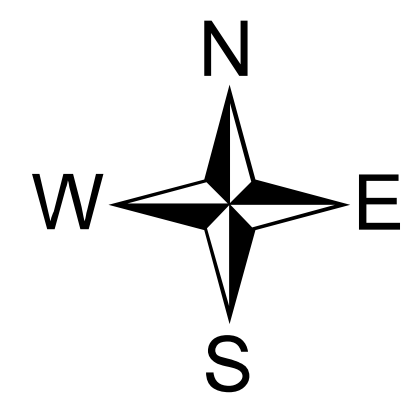


Operations - Mobile Map

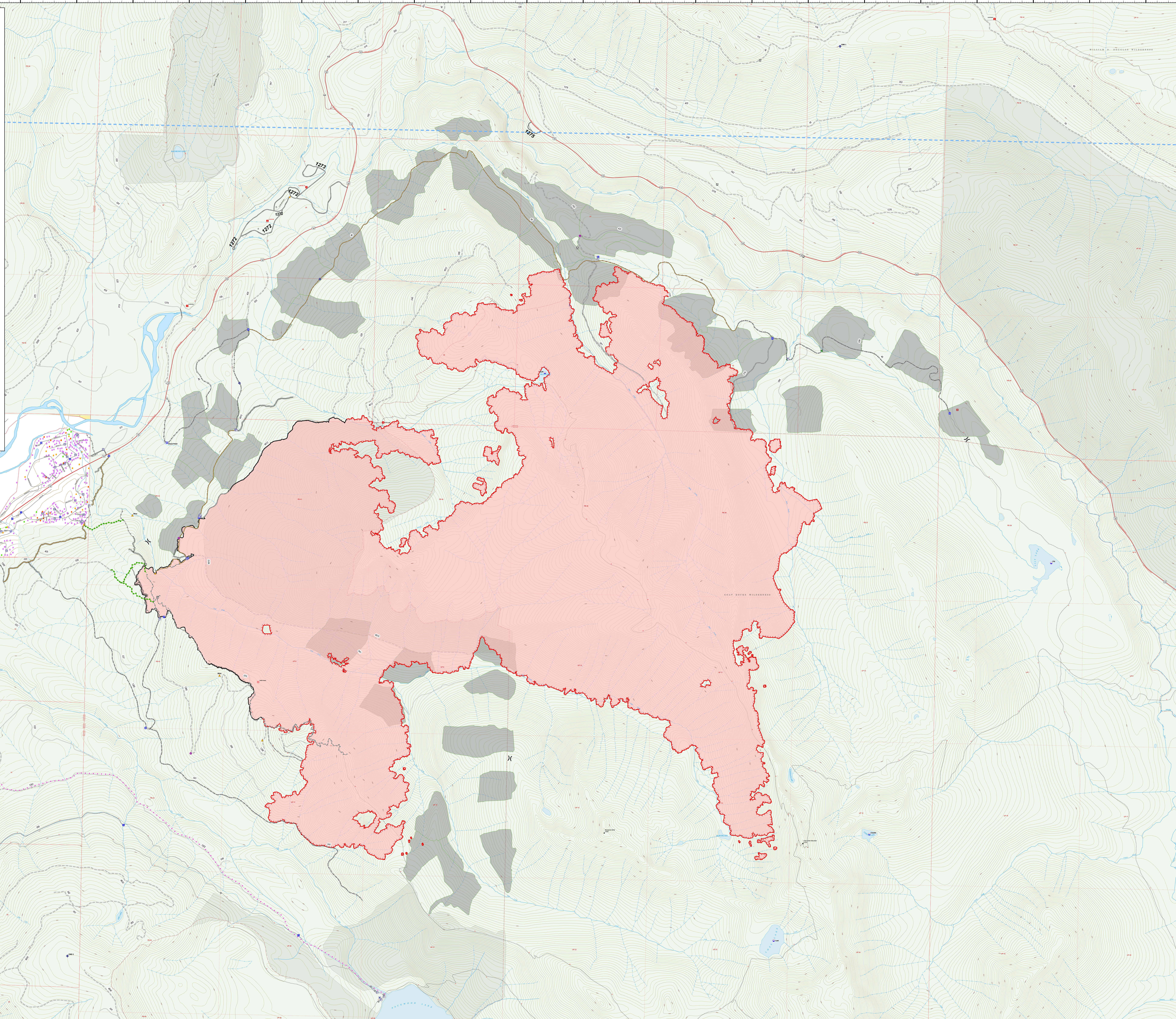
Goat Rocks
WA-GPF-000743
10/24/2022

6,196 acres at 10/19/2022 @ 1858
10% containment



0 0.25 0.5 1 Miles

- | | |
|-----------------------------------|------------------------------------|
| ⌘ Division Break | --- Other |
| ⊗ Aerial Hazard | — Repair Line |
| ⊗ Dip Site | — Road Repair |
| ⊗ Helipad | — Escape Route |
| ⊗ Drop Point | — Temporary Flight Restriction |
| ⊗ Closure | — Contained |
| ⊗ Staging Area | — Uncontained |
| ⊗ Lookout | — Wildfire Daily Fire Perimeter |
| ⊗ Value at Risk | — Plantations |
| ⊗ Landmark | — Primary Highway |
| ⊗ Water Development or Draft Site | — Secondary Highway |
| ⊗ Internet Access | — Paved Roads |
| ⊗ Repeater | — Dirt (Not Paved) |
| ⊗ Hazard | — Camouflage |
| ⊗ Water Source | — Trailhead |
| ⊗ Other Property | — Picnic Site |
| ⊗ Pump | — National Forest Boundary |
| ⊗ Water Tank | — Structure Triage |
| ⊗ Completed Dozer Line | — Defensible - Stand Alone |
| ⊗ Completed Hand Line | — Defensible - Prep and Hold |
| ⊗ Completed Road as Line | — Non-Defensible - Prep and Leave |
| ⊗ Planned Mixed Construction Line | — Non-Defensible - Rescue Drive-By |
| — Access or Improved Road | — Unknown |



RM CIMT 3
10/23/2022 2202
Acres from IR
NAD 1983 USFS R6 Albers