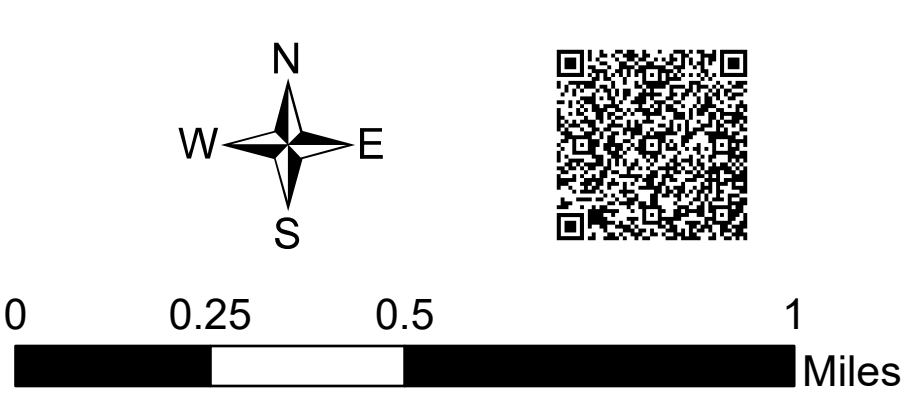
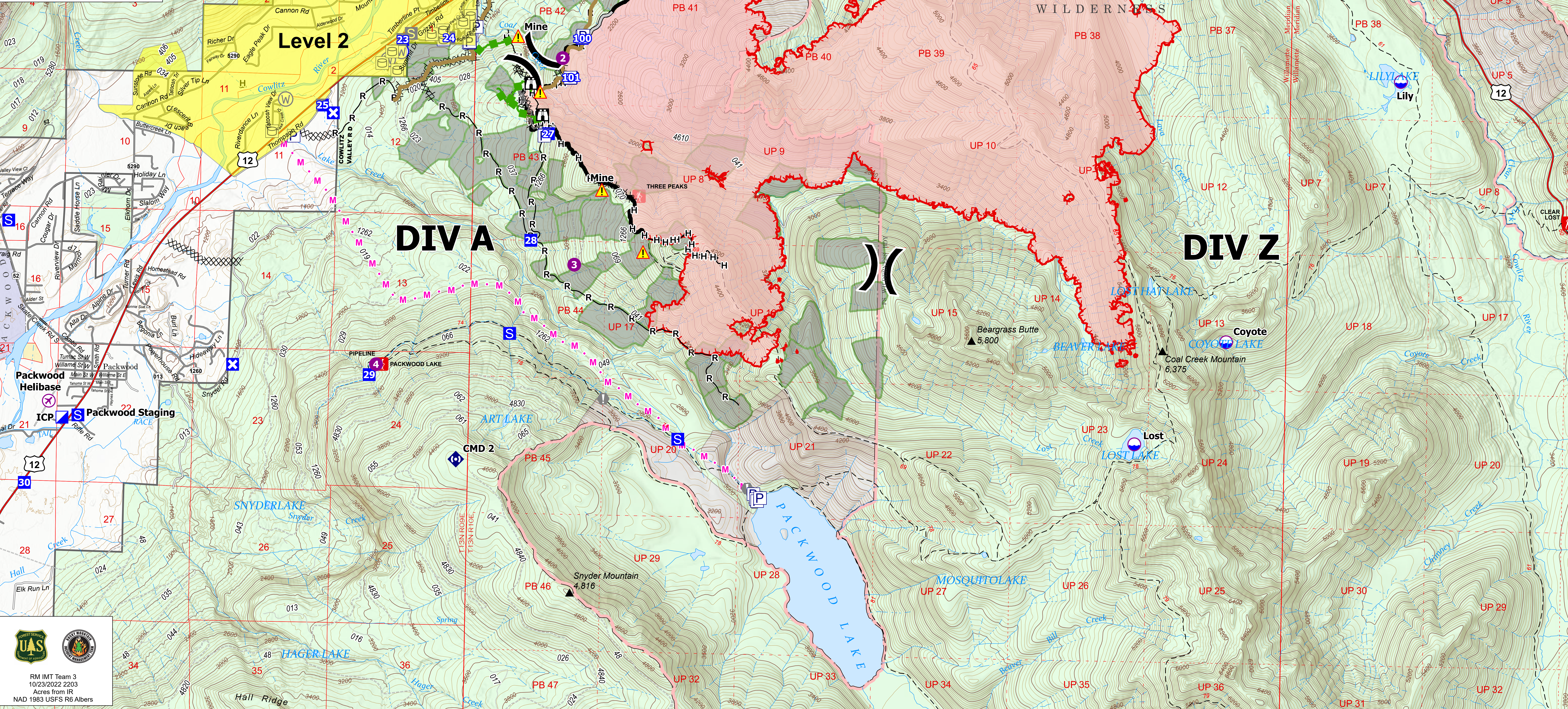


Operations
 Goat Rocks
 WA-GPF-000743
 10/24/2022
 6,196 acres at
 10/19/2022 @ 1858
 10% containment



- | | |
|--|---------------------------|
| | H= Completed Hand Line |
| | R= Completed Road as Line |
| | M= Planned Road as Line |
| | — Access or Improved Road |
| | — Other |
| | — Road Line |
| | — Road Line |
| | — Road Line |
| | — Road Line |
| | — Road Line |
| | — Road Line |
| | — Road Line |
| | — Road Line |
| | — Road Line |
| | — Road Line |
| | — Road Line |
| | — Road Line |
| | — Road Line |
| | — Road Line |
| | — Road Line |
| | — Road Line |
| | — Road Line |
| | — Road Line |
| | — Road Line |
| | — Road Line |
| | — Road Line |
| | — Road Line |
| | — Road Line |
| | — Road Line |
| | — Road Line |
| | — Road Line |
| | — Road Line |
| | — Road Line |
| | — Road Line |



RM IMT Team 3
 10/23/2022 2203
 Acres from IR
 NAD 1983 USFS R6 Albers