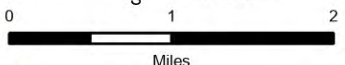


Pilot Map

Goat Rocks
WA-GPF-000743

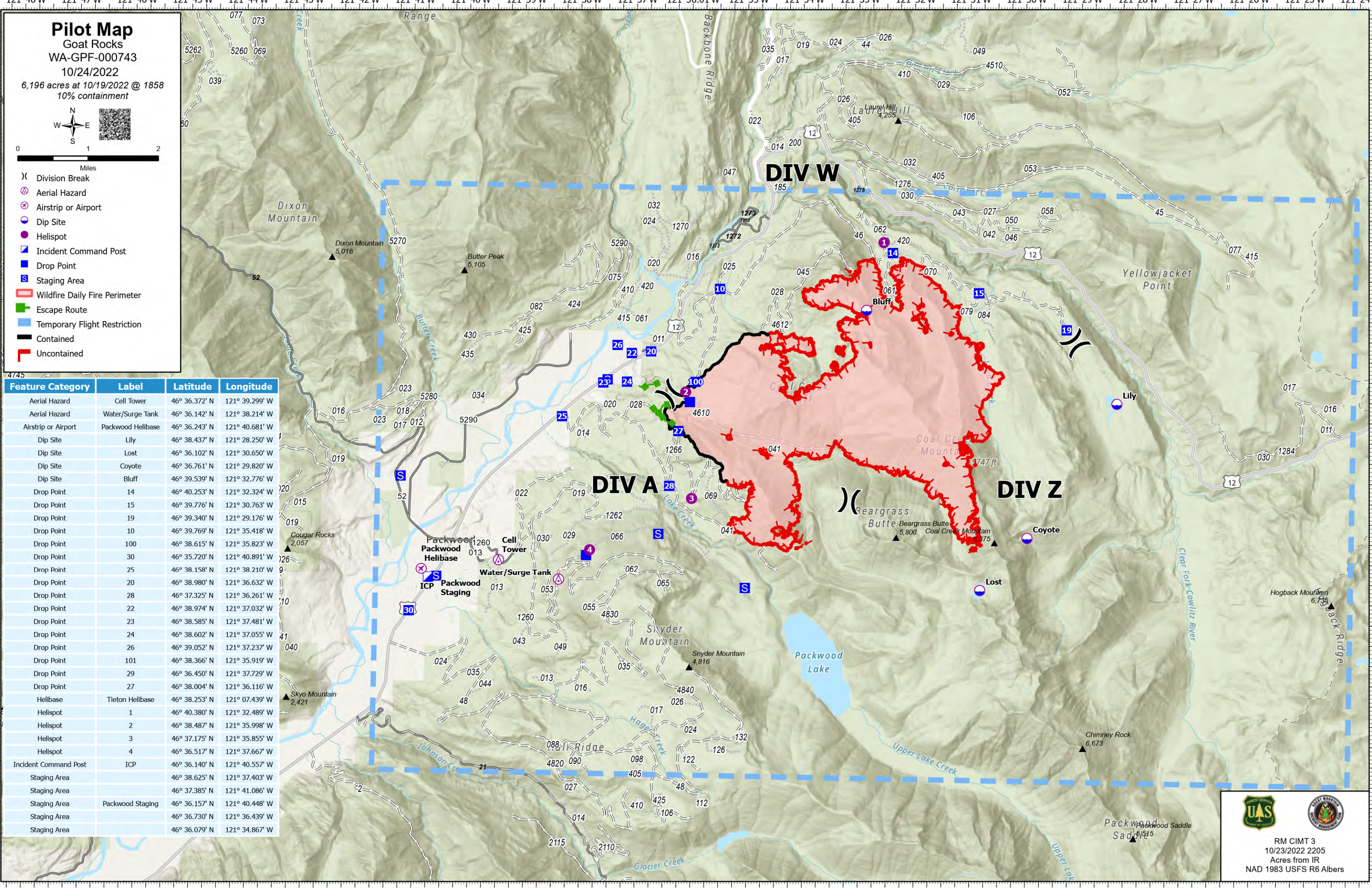
10/24/2022

6,196 acres at 10/19/2022 @ 1858
10% containment



- (X) Division Break
- (A) Aerial Hazard
- (P) Airstrip or Airport
- (D) Dip Site
- (H) Helispot
- (ICP) Incident Command Post
- (DP) Drop Point
- (S) Staging Area
- (WF) Wildfire Daily Fire Perimeter
- (ER) Escape Route
- (TFR) Temporary Flight Restriction
- (C) Contained
- (U) Uncontained

Feature Category	Label	Latitude	Longitude
Aerial Hazard	Cell Tower	46° 36.372' N	121° 39.299' W
Aerial Hazard	Water/Surge Tank	46° 36.142' N	121° 38.214' W
Airstrip or Airport	Packwood Helibase	46° 36.243' N	121° 40.681' W
Dip Site	Lily	46° 38.437' N	121° 28.250' W
Dip Site	Lost	46° 36.102' N	121° 30.650' W
Dip Site	Coyote	46° 36.761' N	121° 29.820' W
Dip Site	Bluff	46° 39.539' N	121° 32.776' W
Drop Point	14	46° 40.253' N	121° 32.324' W
Drop Point	15	46° 39.776' N	121° 30.763' W
Drop Point	19	46° 39.340' N	121° 29.176' W
Drop Point	10	46° 39.769' N	121° 35.418' W
Drop Point	100	46° 38.615' N	121° 35.823' W
Drop Point	30	46° 35.720' N	121° 40.891' W
Drop Point	25	46° 38.158' N	121° 38.210' W
Drop Point	20	46° 38.980' N	121° 36.632' W
Drop Point	28	46° 37.325' N	121° 36.261' W
Drop Point	22	46° 38.974' N	121° 37.032' W
Drop Point	23	46° 38.585' N	121° 37.481' W
Drop Point	24	46° 38.602' N	121° 37.055' W
Drop Point	26	46° 39.052' N	121° 37.237' W
Drop Point	101	46° 38.366' N	121° 35.919' W
Drop Point	29	46° 36.450' N	121° 37.729' W
Drop Point	27	46° 38.004' N	121° 36.116' W
Helibase	Tieton Helibase	46° 38.253' N	121° 07.439' W
Helispot	1	46° 40.380' N	121° 32.489' W
Helispot	2	46° 38.487' N	121° 35.998' W
Helispot	3	46° 37.175' N	121° 35.855' W
Helispot	4	46° 36.517' N	121° 37.667' W
Incident Command Post	ICP	46° 36.140' N	121° 40.557' W
Staging Area		46° 38.625' N	121° 37.403' W
Staging Area		46° 37.385' N	121° 41.086' W
Staging Area	Packwood Staging	46° 36.157' N	121° 40.448' W
Staging Area		46° 36.730' N	121° 36.439' W
Staging Area		46° 36.079' N	121° 34.867' W



RM CIMT 3
10/23/2022 2205
Acres from IR
NAD 1983 USFS R6 Albers