

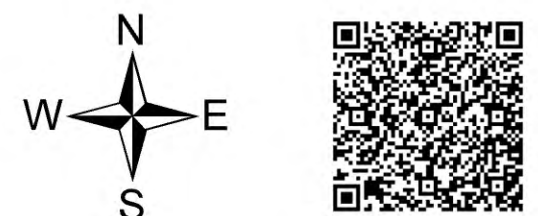
Air Operations

Goat Rocks

WA-GPF-000743

10/26/2022

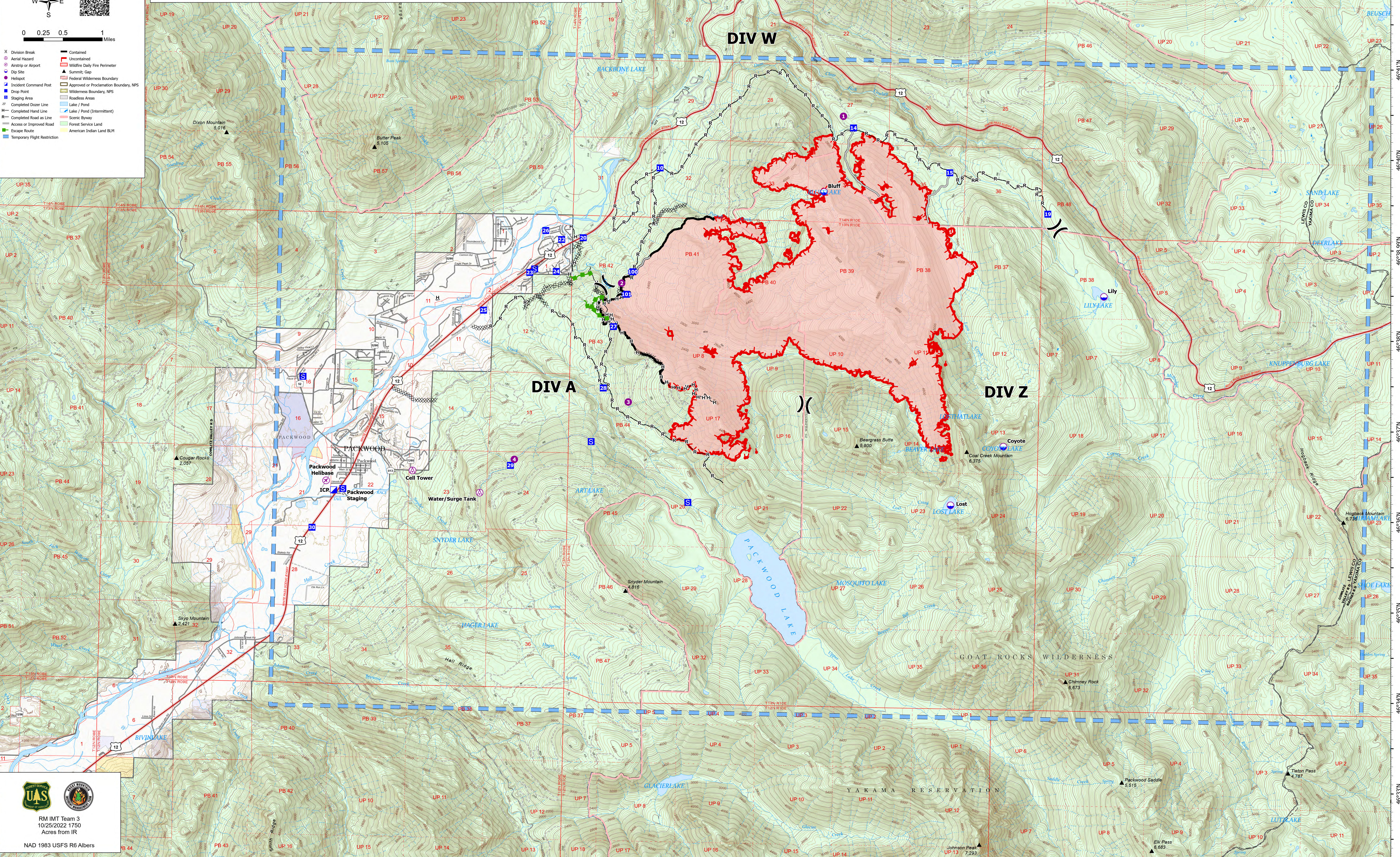
6,196 acres at
10/19/2022 @ 1858
10% containment



0 0.25 0.5 1 Miles

- K Division Break
- A Aerial Hazard
- P Airstrip or Airport
- D Dip Site
- H Helispot
- ICP Incident Command Post
- S Staging Area
- C Completed Dazer Line
- H Completed Hand Line
- R Completed Road as Line
- A Access or Improved Road
- E Escape Route
- T Temporary Flight Restriction
- C Contained
- U Uncontained
- W Wildlife Daily Fire Perimeter
- S Summit, Geo
- F Federal Wilderness Boundary
- A Approved or Proclamation Boundary, NPS
- W Wilderness Boundary, NPS
- R Roadless Areas
- L Lake / Pond
- L Lake / Pond (Intermittent)
- S Scenic Byway
- F Forest Service Land
- A American Indian Land BLM

FC Point Type	Label	Latitude	Longitude	FC Point Type	Label	Latitude	Longitude
Aerial Hazard	Cell Tower	46° 36.372' N	121° 39.299' W	Drop Point	23	46° 38.585' N	121° 37.481' W
Aerial Hazard	Water/Surge Tank	46° 36.142' N	121° 38.214' W	Drop Point	24	46° 38.602' N	121° 37.055' W
Airstrip or Airport	Packwood Helibase	46° 36.243' N	121° 40.681' W	Drop Point	26	46° 39.052' N	121° 37.237' W
Dip Site	Lily	46° 38.437' N	121° 28.250' W	Drop Point	101	46° 38.366' N	121° 35.919' W
Dip Site	Lost	46° 36.102' N	121° 30.650' W	Drop Point	29	46° 36.450' N	121° 37.729' W
Dip Site	Coyote	46° 36.761' N	121° 29.820' W	Drop Point	27	46° 38.004' N	121° 36.116' W
Dip Site	Bluff	46° 39.539' N	121° 32.776' W	Helibase	Tieton Helibase	46° 38.253' N	121° 07.439' W
Drop Point	14	46° 40.253' N	121° 32.324' W	Helispot	1	46° 40.380' N	121° 32.489' W
Drop Point	15	46° 39.776' N	121° 30.763' W	Helispot	2	46° 38.487' N	121° 35.998' W
Drop Point	19	46° 39.340' N	121° 29.176' W	Helispot	3	46° 37.175' N	121° 35.855' W
Drop Point	10	46° 39.769' N	121° 35.418' W	Helispot	4	46° 36.517' N	121° 37.667' W
Drop Point	100	46° 38.615' N	121° 35.823' W	Incident Command Post	ICP	46° 36.140' N	121° 40.557' W
Drop Point	30	46° 35.720' N	121° 40.891' W	Staging Area		46° 38.625' N	121° 37.403' W
Drop Point	25	46° 38.158' N	121° 38.210' W	Staging Area		46° 37.385' N	121° 41.086' W
Drop Point	20	46° 38.980' N	121° 36.632' W	Staging Area	Packwood Staging	46° 36.157' N	121° 40.448' W
Drop Point	28	46° 37.325' N	121° 36.261' W	Staging Area		46° 36.730' N	121° 36.439' W
Drop Point	22	46° 38.974' N	121° 37.032' W	Staging Area		46° 36.079' N	121° 34.867' W



RM IMT Team 3
10/25/2022 1750
Acres from IR

NAD 1983 USFS R6 Albers