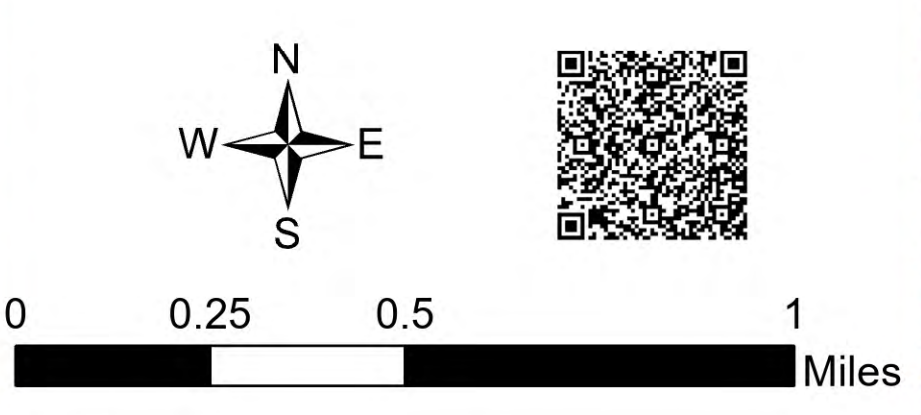


Operations

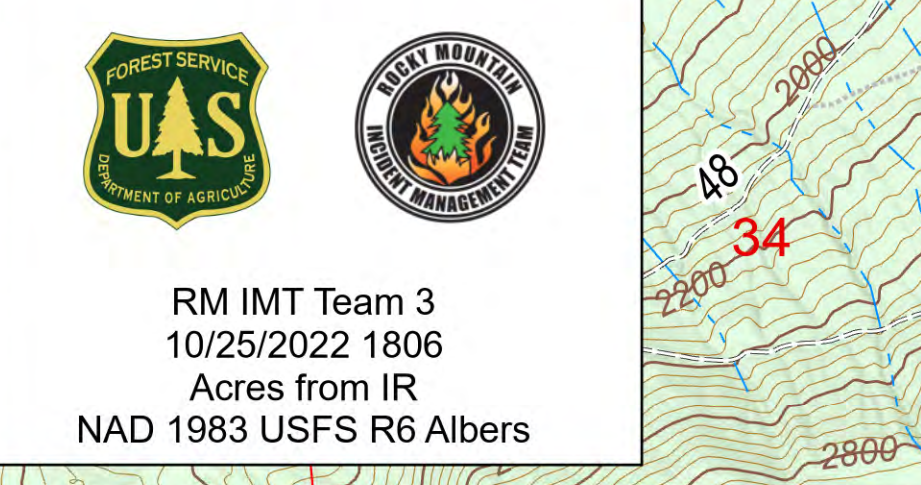
Goat Rocks
WA-GPF-000743

10/26/2022

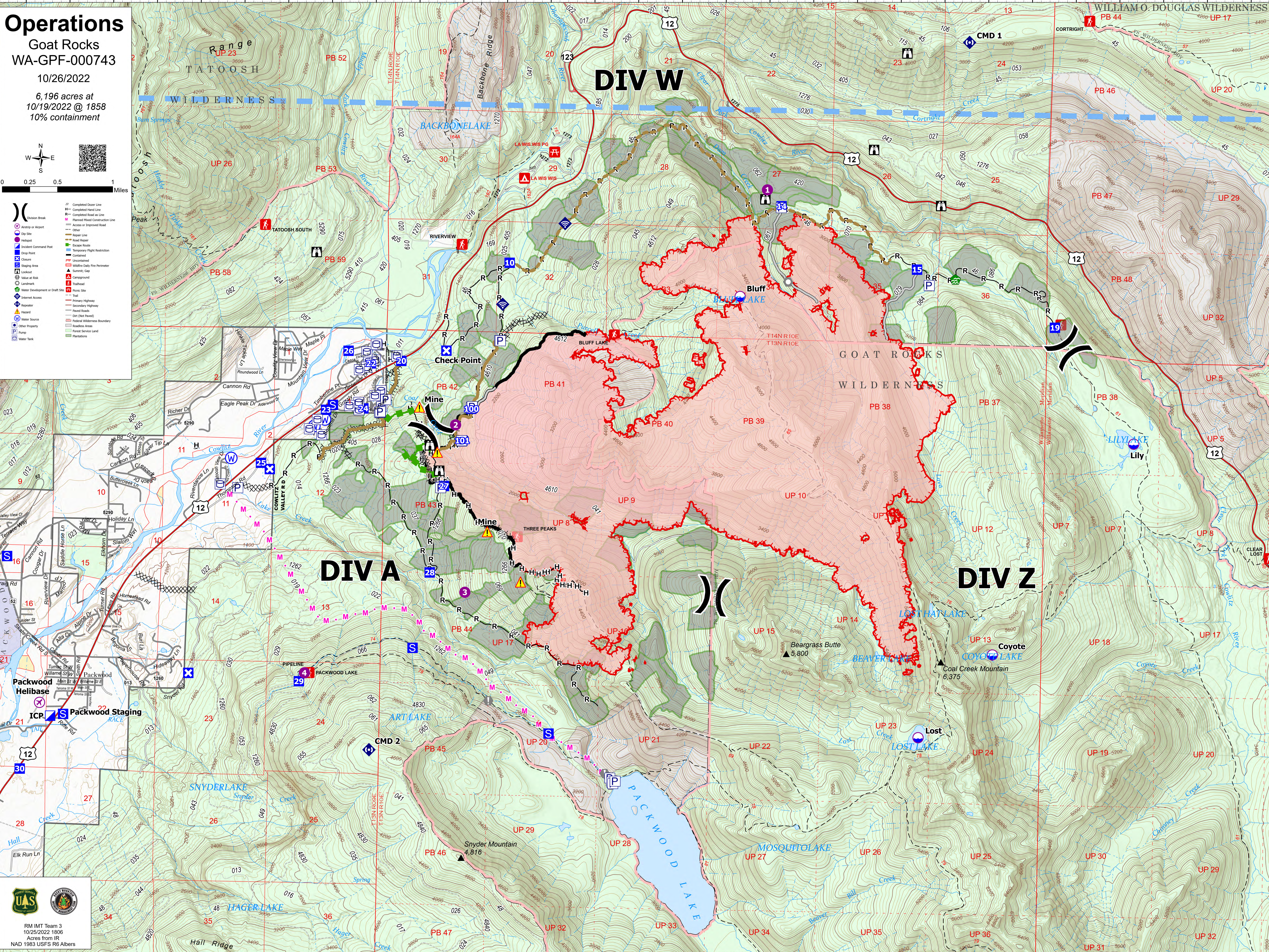
6,196 acres at
10/19/2022 @ 1858
10% containment



- Division Break
- Access or Airport
- Day Site
- Helipad
- Incident Command Post
- Drop Point
- Closure
- Staging Area
- Lookout
- Value at Risk
- Landmark
- Water Development or Draft Site
- Repeater
- Water Source
- Other Property
- Pump
- Water Tank
- Completed Outer Line
- Completed Hand Line
- Completed Road as Line
- Improved Road Construction Line
- Access or Improved Road
- Other
- Power Line
- Road Barrier
- Escalator
- Temporary Flight Restriction
- Uncontained
- Wildfire Daily Fire Perimeter
- Acoustic Gas
- Campground
- Railroad
- Picnic Site
- Trail
- Primary Highway
- Secondary Highway
- Paved Road
- DR (DNR Road)
- Federal Wilderness Boundary
- Roadless Areas
- Forest Service Land
- Parcels



RM IMT Team 3
10/25/2022 1806
Acres from IR
NAD 1983 USFS R6 Albers



DIV W

DIV A

DIV Z

46°41.5'N
46°41'N
46°40.5'N
46°40'N
46°39.5'N
46°39'N
46°38.5'N
46°38'N
46°37.5'N
46°37'N
46°36.5'N
46°36'N
46°35.5'N
46°35'N
46°34.5'N

121°41'W 121°40.5'W 121°40'W 121°39.5'W 121°39'W 121°38.5'W 121°38'W 121°37.5'W 121°37'W 121°36.5'W 121°36.01'W 121°35.5'W 121°35'W 121°34.5'W 121°34'W 121°33.5'W 121°33'W 121°32.5'W 121°32'W 121°31.5'W 121°31'W 121°30.5'W 121°30'W 121°29.5'W 121°29'W 121°28.5'W 121°28'W 121°27.5'W 121°27'W

46°34.5'N