

Corrected  
8-11-22  
0800

INCIDENT ACTION PLAN

---

# MOHR CANYON FIRE

---

WA-SPD-000307

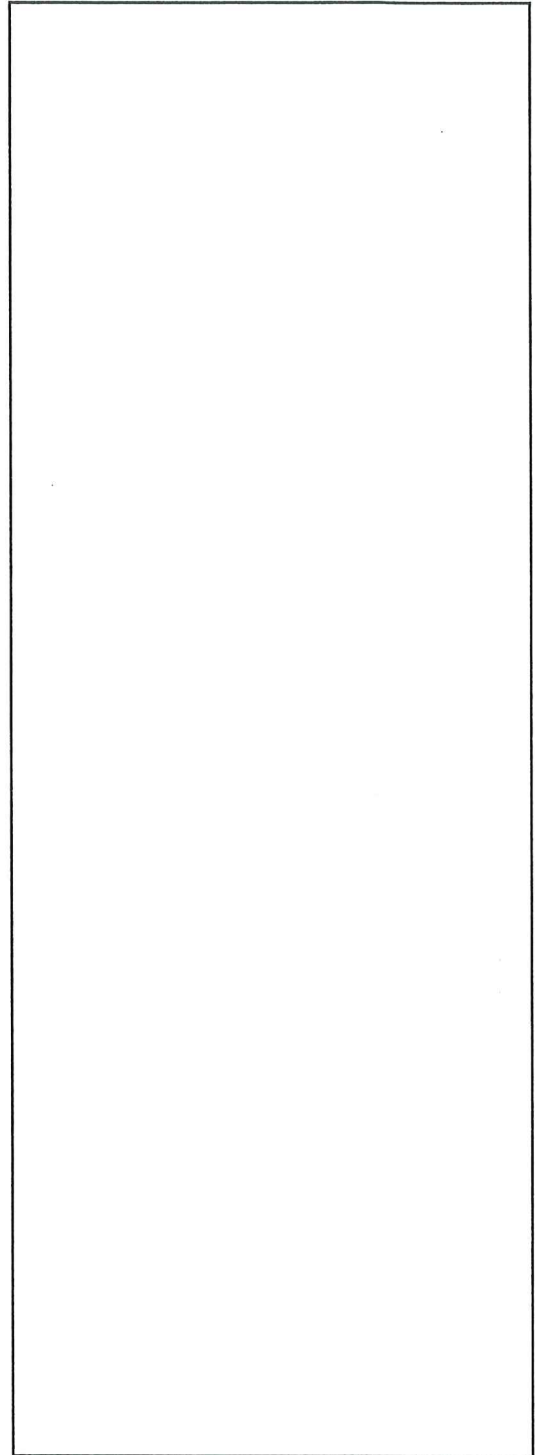
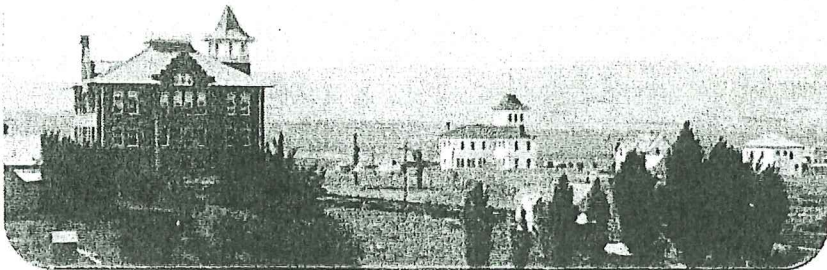
8/11 - 8/12 2022

0600-0600 Operational Period



WA-WFS-000306

221-CTA

PZM8



## INCIDENT OBJECTIVES (ICS 202)

<b>1. Incident Name:</b>		<b>2. Operational Period:</b> AUGUST 11	
MOHR CANYON		Date/Time From: 08/11/2022 0600 THU	Date/Time To: 08/12/2022 0600 FRI
<b>3. Objective(s):</b>			
Provide for the safety of responders, firefighting resources, and the public.			
Engage and take suppression actions limiting acreage growth to protect structures and values at risk.			
Ensure COVID-19 best management practices are always in place and maintained throughout the incident.			
Act professionally and in a manner to maintain relationships with public, landowners, and cooperators. Provide timely and accurate information as it becomes available.			
Maintain awareness of firefighting impact on the landscape, including areas of eco-systems or habitat, minimize and report damage in impacted areas, implement tactics accordingly.			
Maintain fiscal accountability, maximize opportunities for cost savings and keep costs commensurate with values at risk.			
<b>4. Operational Period Command Emphasis:</b>			
Continue to install and reinforce containment lines employing the appropriate tactics to limit acreage burned and maintain the fire east of the Douglas Creek, south of Road 5 SW, east of Road E SW and North of the Palisades. Take advantage of opportunities to go direct wherever possible. Maintain situational awareness of fire behavior and weather as we continue to be under Red Flag conditions.			
Plan accordingly using risk mitigation, monitor the weather forecasts for upcoming changes and how that will impact fire behavior.			
Safely engage using deliberate risk analysis of your tasks.			
Manage your fatigue and maintain awareness of personal and crew health.			
<b>General Situational Awareness:</b>			
<b>5. Site Safety Plan Required?</b> Yes <input type="checkbox"/> No <input checked="" type="checkbox"/>			
Approved Site Safety Plan(s) Located			
<b>6. Incident Action Plan</b> (the items checked below are included in this Incident Action Plan):			
<input checked="" type="checkbox"/> ICS 202	<input type="checkbox"/> ICS 207	Other Attachments:	
<input checked="" type="checkbox"/> ICS 203	<input checked="" type="checkbox"/> ICS 208	<input type="checkbox"/> _____	
<input checked="" type="checkbox"/> ICS 204	<input type="checkbox"/> ICS 220	<input type="checkbox"/> _____	
<input checked="" type="checkbox"/> ICS 205	<input checked="" type="checkbox"/> Map/Chart	<input type="checkbox"/> _____	
<input type="checkbox"/> ICS 205A	<input checked="" type="checkbox"/> Weather Forecast/Tides/Currents	<input type="checkbox"/> _____	
<input checked="" type="checkbox"/> ICS 206			
<b>7. Prepared by:</b> RYAN SCHARNHORST	<b>Position/Title:</b> PSC3	<b>Signature:</b> 	
<b>8. Approved by Incident Commander:</b>	<b>Name:</b> LEONARD JOHNSON	<b>Signature:</b> 	
ICS 202	IAP Page	<b>Date/Time:</b> 08/10/2022 2200	

## ORGANIZATION ASSIGNMENT LIST (ICS 203)

<b>1. Incident Name:</b>		<b>2. Operational Period:</b> AUGUST 11	
MOHR CANYON		Date/Time From: 08/11/2022 0600	Date/Time To: 08/12/2022 0600 FRI
<b>3. Incident Commander(s) and Command Staff:</b>		OPS SECTION CHIEF	CLICK, LONNIE SCHINNELL, SAMI (T)
DEPUTY		DEPUTY OPS SECTION CHIEF	
SAFETY OFFICER		STAGING AREA	
IC/UC	JOHNSON, LEONARD DOMINGUEZ, JOSH (T)		
INFORMATION OFFICER	SHEARER, BENJAMIN 509-903-5777	DIVISION/GROUP	ALPHA JENSEN, CHET E
LIAISON OFFICER		DIVISION/GROUP	ECHO GOLDSMITH, DJ
<b>4. Agency/Organization Representative(s):</b>		DIVISION/GROUP	NIGHT DEROUSIE, JOE (T)
Agency/Organization	Name	<b>7b. Air Operations Branch:</b>	
WSP	HERNANDEZ, ESTHER	AIR OPS BRANCH DIRECTOR	
BLM - SPOKANE DISTRICT	BRYAN, CURTIS	AIR ATTACK SUPERVISOR	
DOUGLAS COUNTY FD#1	JORDAN, DALE	AIR SUPPORT SUPERVISOR	
<b>5. Planning Section:</b>		HELICOPTER COORDINATOR	
CHIEF	SCHARNHORST, RYAN W NORTON, JENNIFER (T)	AIR TANKER COORDINATOR	
DEPUTY		<b>8. Finance/Administration Section:</b>	
RESOURCES UNIT	DODGE, BRIAN (T)	CHIEF	GAYLORD, LAURETTE ELIZABETH BUGNER, KEYNA LEE (T)
SITUATION UNIT		DEPUTY	
DOCUMENTATION UNIT		TIME UNIT	
DEMOBILIZATION UNIT		PROCUREMENT UNIT	
GIS SPECIALIST	EMSLEY, JASON (T) LOWELL, ANNA (T)	COMPENSATION UNIT	THOMPSON, GAENOR
TECHNOLOGY SUPPORT SPECIALIST		COST UNIT	EGTVEDT, LISA
TECHNOLOGY SUPPORT SPECIALIST	MCINNIS, JANA (T)		
<b>6. Logistics Section:</b>			
CHIEF	PRESTON, CINDY AMBROSE, JOSH		
DEPUTY			
SUPPLY UNIT			
FACILITIES UNIT	SELL, KEVIN		
GROUND SUPPORT UNIT	SWORDS, ALANDRA (T) FRAZEY, SHARON (T)		
COMMUNICATIONS UNIT	CARLYLE, PAUL		
MEDICAL UNIT			
SECURITY UNIT			
FOOD UNIT			
<b>7. Operations Section:</b>			
DAY OPS SECTION CHIEF			
NIGHT OPS SECTION CHIEF			
PLANNING OPS	CLOUD, RYAN (T)		
<b>9. Prepared By:</b>	<b>Name:</b> RYAN SCHARNHORST	<b>Position/Title:</b> PSC3	<b>Signature:</b>
ICS 203	IAP Page	<b>Date/Time:</b> 08/10/2022 1608	



## Fire Weather Forecast



**FORECAST NO:** 1

**NAME OF FIRE:** Mohr Canyon

**PREDICTION FOR:** August 11, 2022

**SIGNED:**

**TIME/DATE ISSUED:** August 10, 2022 @ 1402

---

### WEATHER DISCUSSION:

There may be periods of lightning possibly causing new starts gusty winds produced by these thunderstorms could cause areas of blowing dusts reducing visibility at times near and well ahead of the thunderstorms. Little to not rainfall is expected from these thunderstorms.

...RED FLAG WARNING IN EFFECT FROM 1 AM TO NOON PDT THURSDAY...

---

### WEATHER FORECAST FOR TODAY:

Sky/weather.....Mostly sunny. A chance of showers in the morning.  
CWR.....Near 0 percent.  
LAL.....1.  
Max temperature.....95.  
Min humidity.....18 percent.  
Wind (20 ft).....West winds 5 to 6 mph in the morning shifting to the south 5 to 8 mph in the afternoon.  
Mixing height.....9500 ft AGL by afternoon.  
Transport winds.....Southwest around 8 mph.  
Haines Index.....3 or very low potential for large plume dominated fire growth.

---

### WEATHER FORECAST FOR TONIGHT:

Sky/weather.....Clear.  
CWR.....0 percent.  
LAL.....1.  
Min temperature.....Around 63.  
Max humidity.....60 to 65 percent.  
Wind (20 ft).....South winds 6 to 8 mph in the evening shifting to the northwest 4 to 7 mph overnight.  
Mixing height.....6000 ft AGL in the evening decreasing to near the surface overnight.  
Transport winds.....West around 10 mph.  
Haines Index.....4 or low potential for large plume dominated fire growth.

---

### OUTLOOK FOR TOMMOROW:

Sky/weather.....Sunny.  
CWR.....0 percent.  
LAL.....1.  
Max temperature.....Around 96.  
Min humidity.....Near 16 percent.  
Wind (20 ft).....Variable winds up to 5 mph in the morning becoming east around 5 to 7 mph in the afternoon.  
Mixing height.....0 ft AGL in the morning increasing to 11500 ft AGL in the afternoon.  
Transport winds.....East around 9 mph.  
Haines Index.....3 or very low potential for large plum dominated fire growth.

---

### EXTENDED FORECAST:

## Division/Group Assignment List (ICS 204 WF)

Controlled Unclassified Information//Basic

1. Incident Name:			3.			
MOHR CANYON			Branch:		Division/Group	
2. Operational Period: AUGUST 11			DAY DIVISION A			
Date/Time From: 08/11/2022 0600 THU		Date/Time To: 08/12/2022 0600 FRI				
4. Operations Personnel						
OPERATIONS CHIEF		SAMI SCHINNELL		BRANCH DIRECTOR		
DIVISION/GROUP SUPERVISOR		JENSEN, CHET E		AIR ATTACK SUPERVISOR		
5. Resources Assigned this Period						
Strike Team / Task Force / Resource Designator		LWD	Leader	Number Persons	Drop Off PT./Time	Pick Up PT./Time
C-1 - OWF METHOW		08/22	BRESNAHAN	19		
C-6 BOISE			KNIGHT 509-206-6024	20		
C-5 MR CONTRACTING CREW 2		08/23	503-997-9796	20		
<del>E-25 DZR3 - DUKE, ANDREW - 4KD00310</del>		<del>08/23</del>	<del>DUKE</del>	<del>1</del>		
<del>E-2377 Dozz West Benton</del>			<del>Roy</del>			
SW STRIKE TEAM				13		
6. Control Operations/Work Assignments:						
<ul style="list-style-type: none"> <li>Establish and secure control lines</li> <li>Provide for Firefighter and Public safety</li> <li>Record / map control lines</li> </ul>						
7. Special Instructions:						
<ul style="list-style-type: none"> <li>Establish lookouts and repeaters to ensure Firefighter safety and communications.</li> <li>Consult the incident READ if you have questions on cultural artifact or sensitive areas.</li> </ul>						
<u>Additional Resources</u>						
0-5 TFLD		8-16	Verduzco	509-630-8177		
E-3 Type 6		Late Summers		Ethenhofer		
E-4 Type 6		Northridge				
E-5 Type 6		Liberty				
E-6 Type 6		Methow River		Neuneker		
E-7 Type 6		Methow River				
E-15 Type 3		LL Meadow		E-21 Type 5 Osprey wildfire		
E-16 Type 3		Baily		E-22 Type 5 Liberty wildfire		
E-17 Type 4		Methow River		E-23 Type 5 Blackstone		
E-18 Type 4		Methow River		E-24 Type 6 Baily		
E-19 Type 5		Blackstone				
E-20 Type 5		Blackstone				
8. Division/Group Communication Summary						
Function	Channel	RX Frequency N/W	RX Tone/NAC	TX Frequency N/W	TX Tone/NAC	Mode
COMMAND	1	159.3300	88.5	151.1675	88.5	
TACTICAL	3	169.6750	100.00	164.0875	123.00	
TACTICAL	4	151.3100	88.5	151.3100	88.5	
TACTICAL	14	167.9500	0.0	167.9500	0.0	
9. Prepared By (Resource Unit Leader)			Approved By (Planning Section Chief)		Date	Time

**Division/Group Assignment List (ICS 204 WF)**  
Controlled Unclassified Information//Basic

1. Incident Name:			3.			
MOHR CANYON			Branch:		Division/Group	
2. Operational Period: AUGUST 11					DAY DIVISION E	
Date/Time From: 08/11/2022 0600 THU		Date/Time To: 08/12/2022 0600 FRI				
4. Operations Personnel						
OPERATIONS CHIEF		SAMI SCHINNELL		BRANCH DIRECTOR		
DIVISION/GROUP SUPERVISOR		GOLDSMITH, DJ		AIR ATTACK SUPERVISOR		
5. Resources Assigned this Period						
Strike Team / Task Force / Resource Designator		LWD	Leader	Number Persons	Drop Off PT./Time	Pick Up PT./Time
<del>O-5 TFLD</del>		<del>08/16</del>	<del>VERDUZCO 509-630-8177</del>	<del>1</del>		
C-2 ENTIAT IHC			PICKARD	22		
C-3 ROUGE RIVER IHC			SHCUH	20		
C-4 PR REFORESTATION				20		
DZR BENTON WSP1			Ball	2		
<del>DZR BENTON WSP2</del>				<del>2</del>		
E-25 DERS DUKE ANDREW			DUKE			
E-2 DZR LLOYD LOGGING INC			509-997-2441	2		
SE STRIKE TEAM			E-2101, E-2102, E-2103, E-2104, E-2107	10		
STRIKE TEAM #2			NW Strike team Simmons	12		
6. Control Operations/Work Assignments:						
<ul style="list-style-type: none"> <li>Establish and secure control lines</li> <li>Provide for Firefighter and Public safety</li> <li>Record / map control lines</li> <li>Secure and mopup around structures</li> </ul>						
7. Special Instructions:						
<ul style="list-style-type: none"> <li>Establish lookouts and repeaters to ensure Firefighter safety and communications</li> <li>Consult incident READ for questions concerning cultural artifacts and sensitive areas.</li> </ul> <p><u>Additional Resources</u></p> <p>O-21 STLD SE Strike team Parish</p> <p>O-2001 HEQB Castro</p> <p>O-2002 HEQB (H) Doop</p> <p>O-6 TFLD Shaniko</p>						
8. Division/Group Communication Summary						
Function	Channel	RX Frequency N/W	RX Tone/NAC	TX Frequency N/W	TX Tone/NAC	Mode
COMMAND	1	159.3300	88.5	151.1675	88.5	
TACTICAL	3	169.6750	100.00	164.0875	123.00	
TACTICAL	5	151.3400	88.5	151.3400	88.5	
TACTICAL	14	167.9500	0.0	167.9500	0.0	
9. Prepared By (Resource Unit Leader)			Approved By (Planning Section Chief)		Date	Time

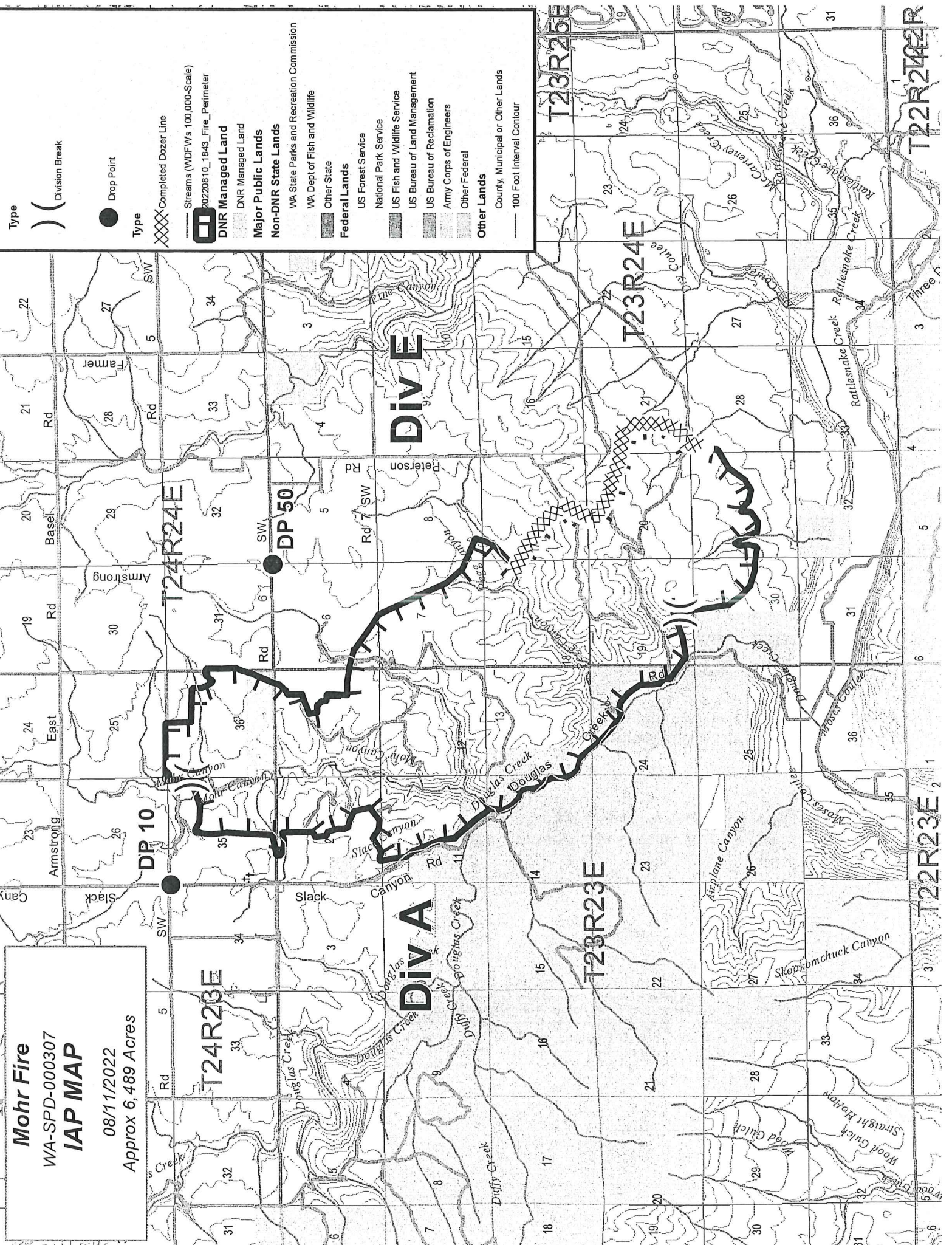
## Division/Group Assignment List (ICS 204 WF)

Controlled Unclassified Information//Basic

<b>1. Incident Name:</b>			<b>3.</b>			
MOHR CANYON			<b>Branch:</b>	<b>Division/Group</b>		
<b>2. Operational Period:</b> <b>AUGUST 11</b>						
Date/Time From:	Date/Time To:					
08/11/2022 0600            THU	08/12/2022 0600            FRI	<b>NIGHT</b>				
<b>4. Operations Personnel</b>						
<b>OPERATIONS CHIEF</b>	SAMI SCHNNILL	<b>BRANCH DIRECTOR</b>				
<b>DIVISION/GROUP SUPERVISOR</b>	DEROSI, JOE	<b>AIR ATTACK SUPERVISOR</b>				
<b>5. Resources Assigned this Period</b>						
Strike Team / Task Force / Resource Designator	LWD	Leader	Number Persons	Drop Off PT./Time	Pick Up PT./Time	
E-8 ENG5 - RAINIER WILDFIRE - 1FDXW47P45EB23510	08/23		3			
E-9 RAINIER WILDFIRE		BEDUARD 509-637-9067	3			
E-10 RAINIER WILDFIRE		ABDUL 808-557-5678	3			
E-12 CHEWACK FIRE		MCLOED 509-493-2788	3			
E-11 CHEWACK		FREEMAN 603-933-2726	3			
E-2126 LOWER COLUMBIA STRIKE TEAM						
E-2127 LOWER COLUMBIA STRIKE TEAM						
E-2128 LOWER COLUMBIA STRIKE TEAM						
E-2129 LOWER COLUMBIA STRIKE TEAM						
E-2130 LOWER COLUMBIA STRIKE TEAM						
<b>6. Control Operations/Work Assignments:</b>						
<ul style="list-style-type: none"> <li>• Patrol and monitor perimeter for any hot spots</li> <li>• Provide for Firefighter and Public safety</li> </ul>						
<b>7. Special Instructions:</b>						
<ul style="list-style-type: none"> <li>• Establish lookouts and repeaters to ensure Firefighter safety.</li> <li>• Contact the incident READ for concerns regarding cultural artifacts and sensitive areas.</li> </ul>						
<b>8. Division/Group Communication Summary</b>						
Function	Channel	RX Frequency N/W	RX Tone/NAC	TX Frequency N/W	TX Tone/NAC	Mode
COMMAND	1	159.3300	88.5	151.1675	88.5	
TACTICAL	3	169.6750	100.00	164.0875	123.00	
TACTICAL	6	151.3850	88.5	151.3850	88.5	
<b>9. Prepared By (Resource Unit Leader)</b>		<b>Approved By (Planning Section Chief)</b>		<b>Date</b>	<b>Time</b>	

**Mohr Fire**  
**WA-SPD-000307**  
**IAP MAP**

08/11/2022  
 Approx 6,489 Acres



- Type  
 ) Division Break  
 ● Drop Point  
 Type  
 XXXX Completed Dozer Line
- Streams (WDFWs 100,000-Scale)  
 20220810\_1843\_Fire\_Perimeter
- DNR Managed Land**
- Major Public Lands**
- Non-DNR State Lands**
- WA State Parks and Recreation Commission  
 WA Dept of Fish and Wildlife  
 Other State
- Federal Lands**
- US Forest Service  
 National Park Service  
 US Fish and Wildlife Service  
 US Bureau of Land Management  
 US Bureau of Reclamation  
 Army Corps of Engineers  
 Other Federal
- Other Lands**
- County, Municipal or Other Lands  
 100 Foot Interval Contour



INCIDENT RADIO COMMUNICATIONS PLAN		1. Incident Name Mohr Fire		2. Date/ Time Prepared 8/10/22 1730		3. Operational Period Date/Time 8/11 - 8/12 0600																																																																																																																																																																									
4. Basic Radio Channel Utilization																																																																																																																																																																															
Mode: W=Wideband Analog, N=Narrowband Analog, D=Digital, M=Mixed																																																																																																																																																																															
Channel	Function	Frequency	Tone	Mode	Assignment	Remarks																																																																																																																																																																									
1	CMD 1	Rx	159.3300	88.5	N	ALL DIVISIONS	PRIMARY CMD LOCATED ON MOSES STOOL																																																																																																																																																																								
		Tx	151.1675	88.5				2	BLANK	Rx	000.0	0.0	N			Tx	000.0	0.0	3	MOSES STOOL	Rx	169.6750	100.0	N	ALL DIVISIONS	BLM AREA REPEATER	Tx	164.0875	123.0	4	TAC 4	Rx	151.3100	88.5	N	DIVISION A		Tx	151.3100	88.5	5	TAC 5	Rx	151.3400	88.5	N	DIVISION E		Tx	151.3400	88.5	6	TAC 6	Rx	151.3850	88.5	N	NIGHT DIVISION		Tx	151.3850	88.5	7	TAC 7	Rx	151.3325	88.5	N	UNASSIGNED		Tx	151.3325	88.5	8	DNR COM	Rx	151.4150	103.5	N	UNASSIGNED	INTEROP CHANNEL	Tx	151.4150	103.5	9	REDNET	Rx	153.8300	0.0	N	UNASSIGNED	INTEROP CHANNEL	Tx	153.8300	0.0	10	DNR BADG	Rx	159.4425	127.3	N		DNR BADGER AREA REPEATER	Tx	151.2125	127.3	11	BLANK	Rx	000.0	0.0	N			Tx	000.0	0.0	12	BLANK	Rx	000.0	0.0	N			Tx	000.0	0.0	13	VMED 28	Rx	155.3400	156.7	N		AIR AMBULANCE	Tx	155.3400	156.7	14	A/G 1	Rx	167.9500	0.0	N	PRIMARY AIR TO GROUND		Tx	167.9500	0.0	15	A/G 2	Rx	169.1500	0.0	N	SECONDARY AIR TO GROUND		Tx	169.1500	0.0	16	AIRGUARD	Rx	168.6250	0.0	N			Tx	168.6250	110.9	Channel		
2	BLANK	Rx	000.0	0.0	N																																																																																																																																																																										
		Tx	000.0	0.0				3	MOSES STOOL	Rx	169.6750	100.0	N	ALL DIVISIONS	BLM AREA REPEATER	Tx	164.0875	123.0	4	TAC 4	Rx	151.3100	88.5	N	DIVISION A		Tx	151.3100	88.5	5	TAC 5	Rx	151.3400	88.5	N	DIVISION E		Tx	151.3400	88.5	6	TAC 6	Rx	151.3850	88.5	N	NIGHT DIVISION		Tx	151.3850	88.5	7	TAC 7	Rx	151.3325	88.5	N	UNASSIGNED		Tx	151.3325	88.5	8	DNR COM	Rx	151.4150	103.5	N	UNASSIGNED	INTEROP CHANNEL	Tx	151.4150	103.5	9	REDNET	Rx	153.8300	0.0	N	UNASSIGNED	INTEROP CHANNEL	Tx	153.8300	0.0	10	DNR BADG	Rx	159.4425	127.3	N		DNR BADGER AREA REPEATER	Tx	151.2125	127.3	11	BLANK	Rx	000.0	0.0	N			Tx	000.0	0.0	12	BLANK	Rx	000.0	0.0	N			Tx	000.0	0.0	13	VMED 28	Rx	155.3400	156.7	N		AIR AMBULANCE	Tx	155.3400	156.7	14	A/G 1	Rx	167.9500	0.0	N	PRIMARY AIR TO GROUND		Tx	167.9500	0.0	15	A/G 2	Rx	169.1500	0.0	N	SECONDARY AIR TO GROUND		Tx	169.1500	0.0	16	AIRGUARD	Rx	168.6250	0.0	N			Tx	168.6250	110.9	Channel													
3	MOSES STOOL	Rx	169.6750	100.0	N	ALL DIVISIONS	BLM AREA REPEATER																																																																																																																																																																								
		Tx	164.0875	123.0				4	TAC 4	Rx	151.3100	88.5	N	DIVISION A		Tx	151.3100	88.5	5	TAC 5	Rx	151.3400	88.5	N	DIVISION E		Tx	151.3400	88.5	6	TAC 6	Rx	151.3850	88.5	N	NIGHT DIVISION		Tx	151.3850	88.5	7	TAC 7	Rx	151.3325	88.5	N	UNASSIGNED		Tx	151.3325	88.5	8	DNR COM	Rx	151.4150	103.5	N	UNASSIGNED	INTEROP CHANNEL	Tx	151.4150	103.5	9	REDNET	Rx	153.8300	0.0	N	UNASSIGNED	INTEROP CHANNEL	Tx	153.8300	0.0	10	DNR BADG	Rx	159.4425	127.3	N		DNR BADGER AREA REPEATER	Tx	151.2125	127.3	11	BLANK	Rx	000.0	0.0	N			Tx	000.0	0.0	12	BLANK	Rx	000.0	0.0	N			Tx	000.0	0.0	13	VMED 28	Rx	155.3400	156.7	N		AIR AMBULANCE	Tx	155.3400	156.7	14	A/G 1	Rx	167.9500	0.0	N	PRIMARY AIR TO GROUND		Tx	167.9500	0.0	15	A/G 2	Rx	169.1500	0.0	N	SECONDARY AIR TO GROUND		Tx	169.1500	0.0	16	AIRGUARD	Rx	168.6250	0.0	N			Tx	168.6250	110.9	Channel																								
4	TAC 4	Rx	151.3100	88.5	N	DIVISION A																																																																																																																																																																									
		Tx	151.3100	88.5				5	TAC 5	Rx	151.3400	88.5	N	DIVISION E		Tx	151.3400	88.5	6	TAC 6	Rx	151.3850	88.5	N	NIGHT DIVISION		Tx	151.3850	88.5	7	TAC 7	Rx	151.3325	88.5	N	UNASSIGNED		Tx	151.3325	88.5	8	DNR COM	Rx	151.4150	103.5	N	UNASSIGNED	INTEROP CHANNEL	Tx	151.4150	103.5	9	REDNET	Rx	153.8300	0.0	N	UNASSIGNED	INTEROP CHANNEL	Tx	153.8300	0.0	10	DNR BADG	Rx	159.4425	127.3	N		DNR BADGER AREA REPEATER	Tx	151.2125	127.3	11	BLANK	Rx	000.0	0.0	N			Tx	000.0	0.0	12	BLANK	Rx	000.0	0.0	N			Tx	000.0	0.0	13	VMED 28	Rx	155.3400	156.7	N		AIR AMBULANCE	Tx	155.3400	156.7	14	A/G 1	Rx	167.9500	0.0	N	PRIMARY AIR TO GROUND		Tx	167.9500	0.0	15	A/G 2	Rx	169.1500	0.0	N	SECONDARY AIR TO GROUND		Tx	169.1500	0.0	16	AIRGUARD	Rx	168.6250	0.0	N			Tx	168.6250	110.9	Channel																																			
5	TAC 5	Rx	151.3400	88.5	N	DIVISION E																																																																																																																																																																									
		Tx	151.3400	88.5				6	TAC 6	Rx	151.3850	88.5	N	NIGHT DIVISION		Tx	151.3850	88.5	7	TAC 7	Rx	151.3325	88.5	N	UNASSIGNED		Tx	151.3325	88.5	8	DNR COM	Rx	151.4150	103.5	N	UNASSIGNED	INTEROP CHANNEL	Tx	151.4150	103.5	9	REDNET	Rx	153.8300	0.0	N	UNASSIGNED	INTEROP CHANNEL	Tx	153.8300	0.0	10	DNR BADG	Rx	159.4425	127.3	N		DNR BADGER AREA REPEATER	Tx	151.2125	127.3	11	BLANK	Rx	000.0	0.0	N			Tx	000.0	0.0	12	BLANK	Rx	000.0	0.0	N			Tx	000.0	0.0	13	VMED 28	Rx	155.3400	156.7	N		AIR AMBULANCE	Tx	155.3400	156.7	14	A/G 1	Rx	167.9500	0.0	N	PRIMARY AIR TO GROUND		Tx	167.9500	0.0	15	A/G 2	Rx	169.1500	0.0	N	SECONDARY AIR TO GROUND		Tx	169.1500	0.0	16	AIRGUARD	Rx	168.6250	0.0	N			Tx	168.6250	110.9	Channel																																														
6	TAC 6	Rx	151.3850	88.5	N	NIGHT DIVISION																																																																																																																																																																									
		Tx	151.3850	88.5				7	TAC 7	Rx	151.3325	88.5	N	UNASSIGNED		Tx	151.3325	88.5	8	DNR COM	Rx	151.4150	103.5	N	UNASSIGNED	INTEROP CHANNEL	Tx	151.4150	103.5	9	REDNET	Rx	153.8300	0.0	N	UNASSIGNED	INTEROP CHANNEL	Tx	153.8300	0.0	10	DNR BADG	Rx	159.4425	127.3	N		DNR BADGER AREA REPEATER	Tx	151.2125	127.3	11	BLANK	Rx	000.0	0.0	N			Tx	000.0	0.0	12	BLANK	Rx	000.0	0.0	N			Tx	000.0	0.0	13	VMED 28	Rx	155.3400	156.7	N		AIR AMBULANCE	Tx	155.3400	156.7	14	A/G 1	Rx	167.9500	0.0	N	PRIMARY AIR TO GROUND		Tx	167.9500	0.0	15	A/G 2	Rx	169.1500	0.0	N	SECONDARY AIR TO GROUND		Tx	169.1500	0.0	16	AIRGUARD	Rx	168.6250	0.0	N			Tx	168.6250	110.9	Channel																																																									
7	TAC 7	Rx	151.3325	88.5	N	UNASSIGNED																																																																																																																																																																									
		Tx	151.3325	88.5				8	DNR COM	Rx	151.4150	103.5	N	UNASSIGNED	INTEROP CHANNEL	Tx	151.4150	103.5	9	REDNET	Rx	153.8300	0.0	N	UNASSIGNED	INTEROP CHANNEL	Tx	153.8300	0.0	10	DNR BADG	Rx	159.4425	127.3	N		DNR BADGER AREA REPEATER	Tx	151.2125	127.3	11	BLANK	Rx	000.0	0.0	N			Tx	000.0	0.0	12	BLANK	Rx	000.0	0.0	N			Tx	000.0	0.0	13	VMED 28	Rx	155.3400	156.7	N		AIR AMBULANCE	Tx	155.3400	156.7	14	A/G 1	Rx	167.9500	0.0	N	PRIMARY AIR TO GROUND		Tx	167.9500	0.0	15	A/G 2	Rx	169.1500	0.0	N	SECONDARY AIR TO GROUND		Tx	169.1500	0.0	16	AIRGUARD	Rx	168.6250	0.0	N			Tx	168.6250	110.9	Channel																																																																				
8	DNR COM	Rx	151.4150	103.5	N	UNASSIGNED	INTEROP CHANNEL																																																																																																																																																																								
		Tx	151.4150	103.5				9	REDNET	Rx	153.8300	0.0	N	UNASSIGNED	INTEROP CHANNEL	Tx	153.8300	0.0	10	DNR BADG	Rx	159.4425	127.3	N		DNR BADGER AREA REPEATER	Tx	151.2125	127.3	11	BLANK	Rx	000.0	0.0	N			Tx	000.0	0.0	12	BLANK	Rx	000.0	0.0	N			Tx	000.0	0.0	13	VMED 28	Rx	155.3400	156.7	N		AIR AMBULANCE	Tx	155.3400	156.7	14	A/G 1	Rx	167.9500	0.0	N	PRIMARY AIR TO GROUND		Tx	167.9500	0.0	15	A/G 2	Rx	169.1500	0.0	N	SECONDARY AIR TO GROUND		Tx	169.1500	0.0	16	AIRGUARD	Rx	168.6250	0.0	N			Tx	168.6250	110.9	Channel																																																																															
9	REDNET	Rx	153.8300	0.0	N	UNASSIGNED	INTEROP CHANNEL																																																																																																																																																																								
		Tx	153.8300	0.0				10	DNR BADG	Rx	159.4425	127.3	N		DNR BADGER AREA REPEATER	Tx	151.2125	127.3	11	BLANK	Rx	000.0	0.0	N			Tx	000.0	0.0	12	BLANK	Rx	000.0	0.0	N			Tx	000.0	0.0	13	VMED 28	Rx	155.3400	156.7	N		AIR AMBULANCE	Tx	155.3400	156.7	14	A/G 1	Rx	167.9500	0.0	N	PRIMARY AIR TO GROUND		Tx	167.9500	0.0	15	A/G 2	Rx	169.1500	0.0	N	SECONDARY AIR TO GROUND		Tx	169.1500	0.0	16	AIRGUARD	Rx	168.6250	0.0	N			Tx	168.6250	110.9	Channel																																																																																										
10	DNR BADG	Rx	159.4425	127.3	N		DNR BADGER AREA REPEATER																																																																																																																																																																								
		Tx	151.2125	127.3				11	BLANK	Rx	000.0	0.0	N			Tx	000.0	0.0	12	BLANK	Rx	000.0	0.0	N			Tx	000.0	0.0	13	VMED 28	Rx	155.3400	156.7	N		AIR AMBULANCE	Tx	155.3400	156.7	14	A/G 1	Rx	167.9500	0.0	N	PRIMARY AIR TO GROUND		Tx	167.9500	0.0	15	A/G 2	Rx	169.1500	0.0	N	SECONDARY AIR TO GROUND		Tx	169.1500	0.0	16	AIRGUARD	Rx	168.6250	0.0	N			Tx	168.6250	110.9	Channel																																																																																																					
11	BLANK	Rx	000.0	0.0	N																																																																																																																																																																										
		Tx	000.0	0.0				12	BLANK	Rx	000.0	0.0	N			Tx	000.0	0.0	13	VMED 28	Rx	155.3400	156.7	N		AIR AMBULANCE	Tx	155.3400	156.7	14	A/G 1	Rx	167.9500	0.0	N	PRIMARY AIR TO GROUND		Tx	167.9500	0.0	15	A/G 2	Rx	169.1500	0.0	N	SECONDARY AIR TO GROUND		Tx	169.1500	0.0	16	AIRGUARD	Rx	168.6250	0.0	N			Tx	168.6250	110.9	Channel																																																																																																																
12	BLANK	Rx	000.0	0.0	N																																																																																																																																																																										
		Tx	000.0	0.0				13	VMED 28	Rx	155.3400	156.7	N		AIR AMBULANCE	Tx	155.3400	156.7	14	A/G 1	Rx	167.9500	0.0	N	PRIMARY AIR TO GROUND		Tx	167.9500	0.0	15	A/G 2	Rx	169.1500	0.0	N	SECONDARY AIR TO GROUND		Tx	169.1500	0.0	16	AIRGUARD	Rx	168.6250	0.0	N			Tx	168.6250	110.9	Channel																																																																																																																											
13	VMED 28	Rx	155.3400	156.7	N		AIR AMBULANCE																																																																																																																																																																								
		Tx	155.3400	156.7				14	A/G 1	Rx	167.9500	0.0	N	PRIMARY AIR TO GROUND		Tx	167.9500	0.0	15	A/G 2	Rx	169.1500	0.0	N	SECONDARY AIR TO GROUND		Tx	169.1500	0.0	16	AIRGUARD	Rx	168.6250	0.0	N			Tx	168.6250	110.9	Channel																																																																																																																																						
14	A/G 1	Rx	167.9500	0.0	N	PRIMARY AIR TO GROUND																																																																																																																																																																									
		Tx	167.9500	0.0				15	A/G 2	Rx	169.1500	0.0	N	SECONDARY AIR TO GROUND		Tx	169.1500	0.0	16	AIRGUARD	Rx	168.6250	0.0	N			Tx	168.6250	110.9	Channel																																																																																																																																																	
15	A/G 2	Rx	169.1500	0.0	N	SECONDARY AIR TO GROUND																																																																																																																																																																									
		Tx	169.1500	0.0				16	AIRGUARD	Rx	168.6250	0.0	N			Tx	168.6250	110.9	Channel																																																																																																																																																												
16	AIRGUARD	Rx	168.6250	0.0	N																																																																																																																																																																										
		Tx	168.6250	110.9																																																																																																																																																																											
Channel																																																																																																																																																																															

# Safety Message

**Incident: Mohr Fire**

**Date: 8/11/2022**

**Shift: Day & Night Shift**

## Standard Firefighting Order of the day:

#6 – Be alert. Keep calm. Think clearly. Act decisively.

### Fun Facts on Hydration

#### *How much water makes up our body?*

Water makes up to 60% of an adult's and 75% of an infant's body weight and performs crucial roles such as carrying nutrients and waste products between our major organs, helping regulate temperature, lubricating our joints and acting as a shock absorber.

#### *How much does your body need to lose to become hydrated?*

Dehydration can be defined as a 1% or greater loss of body mass due to fluid loss, for example the loss of 0.8kg of body weight in an 80-kg person (176 lbs.)

#### *How much should you drink?*

Every individual is different, therefore the amount of water needed to hydrate will vary from person to person. It is important to be hydrated before working in order to avoid getting a heat related injury. When working, drink water at regular intervals (minimum of every 20 minutes) especially in hot weather. For high intensity work lasting more than 1 hour, sports drinks accompanied with water (ratio of one sports drink to two waters) will help balance electrolyte loss.

It is also important to continue to rehydrate after working, and for most people water is adequate and is best achieved by drinking at intervals, rather than gulping large amounts at a time.

**Take care of yourself and your crew!**

### Watch Out Situation of the Day

*...Expect the*



6. INSTRUCTIONS AND ASSIGNMENTS NOT CLEAR

***...UNEXPECTED!!***

### “Safe Driving Habits”

- Keep windshields clean.
- Drive with your headlights on at all times.
- Obey all traffic laws.
- Keep ample distance between vehicles to ensure good visibility when driving on dirt/gravel roads.
- Utilize spotters when backing.
- Avoid distracted driving.

**DRIVE DEFENSIVELY!**

**Safety is no accident!**

Finance

1. Incident Name  
Mohr Canyon

2. Date Prepared  
8/10/2022

3. Time Prepared  
1700

# ~ FINANCE ~

EMERGENCY EQUIPMENT SHIFT TICKET  
NOTE: The responsible Government Officer will update this form each day or shift and make initial and final equipment inspections. E-2XXX

1. AGREEMENT NUMBER		2. CONTRACTOR (name) Some Fire Department	
3. INCIDENT OR PROJECT NAME Some Fire		4. INCIDENT NUMBER WA WFS XXX	
5. OPERATOR (name) FF Jones		6. OPERATOR FURNISHED BY <input checked="" type="checkbox"/> CONTRACTOR <input type="checkbox"/> GOVERNMENT	
7. EQUIPMENT MAKE Ford		8. OPERATOR LICENSE NUMBER C1572xx	
9. SERIAL NUMBER 123456		10. LICENSE NUMBER C1572xx	
11. OPERATING SUPPLIES FURNISHED BY <input checked="" type="checkbox"/> CONTRACTOR (wet) <input type="checkbox"/> GOVERNMENT (dry)		12. REMARKS (released down time and cause, problems, etc.)  COVID check completed	
13. DATE MO/DAY/YR		14. EQUIPMENT USE HOURS-DAYS/MILES (code etc.)	
START	STOP	WORK	SPECIAL
7/15/2020	0700	1800	11
15. EQUIPMENT STATUS <input type="checkbox"/> a. Inspected and under agreement <input type="checkbox"/> b. Released by Government <input type="checkbox"/> c. Withdrawn by Contractor		16. INVOICE POSTED BY (Recorder's initials)	
17. CONTRACTOR'S OR AUTHORIZED AGENT'S SIGNATURE		18. GOVERNMENT OFFICER'S SIGNATURE	
19. DATE SIGNED			

OPTIONAL FORM 297 (Rev. 7-99) USDAM.SDI

**CREW TIME REPORT**

(1) CREW NAME Some Fire District		(2) CREW NUMBER E-2145		
(3) OFFICE RESPONSIBLE FOR FIRE WSP Mobilization		(4) FIRE NAME TITAN		
(5) FIRE NUMBER WA WFS-9XXX				
RE-MARKS NO.	NAME OF EMPLOYEE	CLASSIFICATION	DATE: 8/16/2018	
			MILITARY TIME ON	MILITARY TIME OFF
1	JOE CAPTAIN	ENG5	1730	1930
1	MARY FIREFIGHTER	FF1	1730	1930
1	WAYNE NOZZLEMAN	FF2	1730	1930
2	JOE CAPTAIN	ENG5	1930	2230
2	MARY FIREFIGHTER	FF1	1930	2230
2	WAYNE NOZZLEMAN	FF2	1930	2230
3	JOE CAPTAIN	ENG5	2230	2300
3	MARY FIREFIGHTER	FF1	2230	2300
3	WAYNE NOZZLEMAN	FF2	2230	2300

(11) REMARKS  
1 - Mobilization (Maximum 2 hours)  
2 - Travel  
3 - Check in  
  
Pre trip COVID completed

(12) OFFICER-IN-CHARGE (Signature) (13) TITLE (Officer-in-Charge)  
(14) NAME (Person Posting to Emergency Time Report) (15) DATE

Have you provided Finance with the following? Please provide them with following as soon as possible!

- ✓ Contracts
- ✓ WFS Agreements
- ✓ Resource Order
- ✓ Crew Time Reports (CTR)
- ✓ Shift Tickets
- ✓ Contract Crew Manifest
- ✓ State Mobe Resource Manifest
- ✓ Contract resource equipment inspections

## Thank You!

9. Prepared by (Name and Position)

Laurette Gaylord



## Mohr Fire

Aug 10, 2022

Fire Information Number – 509 903 5777

<b><u>PIO Ben Shearer</u></b>	<b><u>INFORMATION LINE</u></b>
Phone: 509 492-1461 Email: <a href="mailto:sewaimtpio@gmail.com">sewaimtpio@gmail.com</a>	<b><u>(509) 903-5777</u></b>
Facebook: Southeast Washington Interagency Incident Management Team	<b><u>FACEBOOK</u></b> <b><u>@sewaimt</u></b>

**We are requesting pictures of the fire line activity.  
Please identify people and agencies so they can get credit.**

**Before posting pictures to your accounts:**

When you're taking pictures, please make sure that the following things are in place:

If you are near the fire line, ALL PPE must be worn — gloves, hats, shelter, etc.

Make sure the activity you capture is what you want the public to see! You might like the picture of your crew eating lunch. Please think twice before you post it on your account.

Please do not take pictures of people lying around the fire line. Beware of how the picture looks. Sometimes distances can be deceiving. You might be at a safe distance, but if it looks like the plane is dropping water right behind you, that is what the public will think.

Please email pictures, or you can text my number 509.-903-5777

Refer the public to the PIO information line and the SEWAIMT Facebook.

I will try to give divisions a call if the media wants to come out. If the media shows up unescorted, please ask them to call me, and please report it up the chain of command.

# Mohr Fire Transportation Map

FROM ICP @  
200 E Birch St  
Waterville, WA 98858

Head west on E Birch St  
toward S Baker St  
433 ft

Turn right onto S Chelan Ave  
0.3 mi

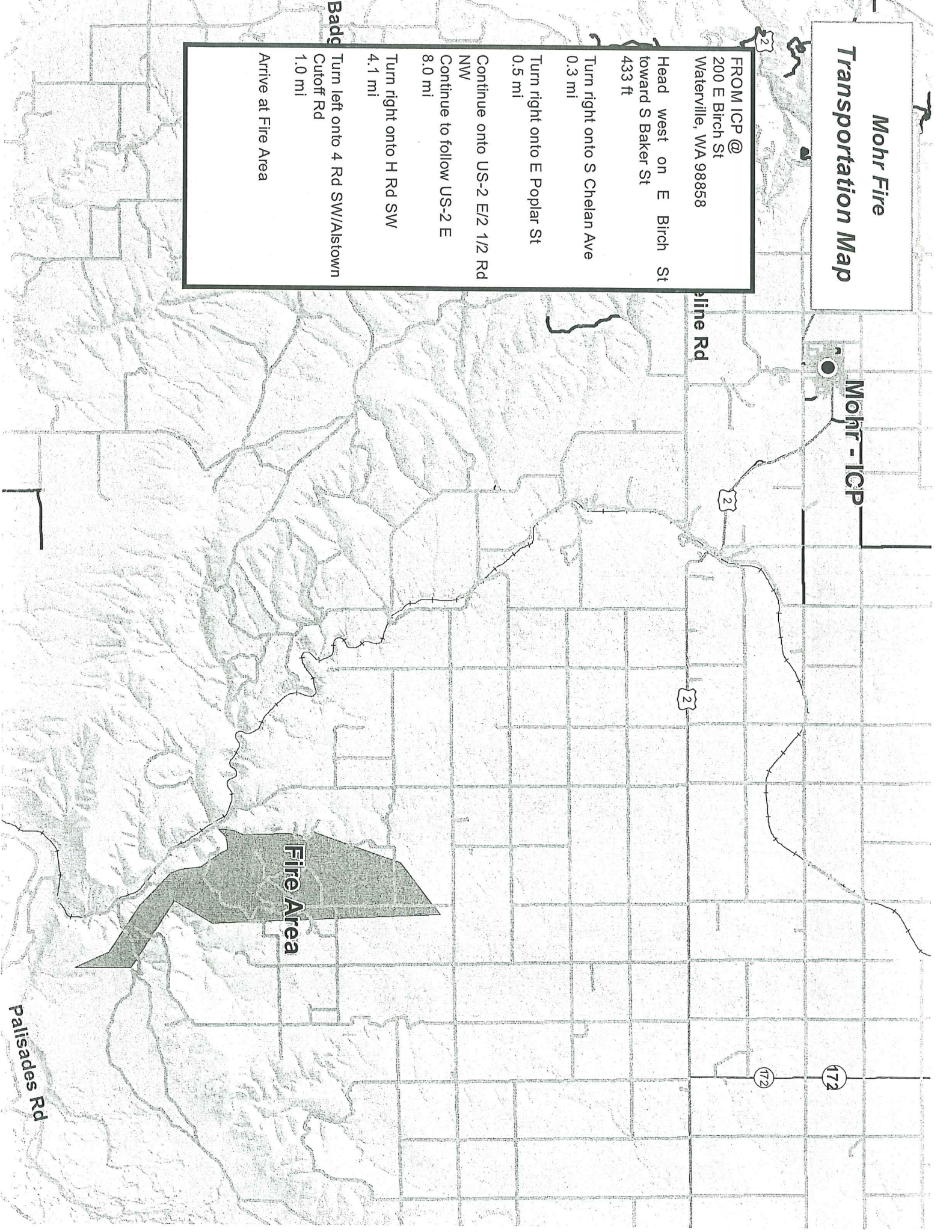
Turn right onto E Poplar St  
0.5 mi

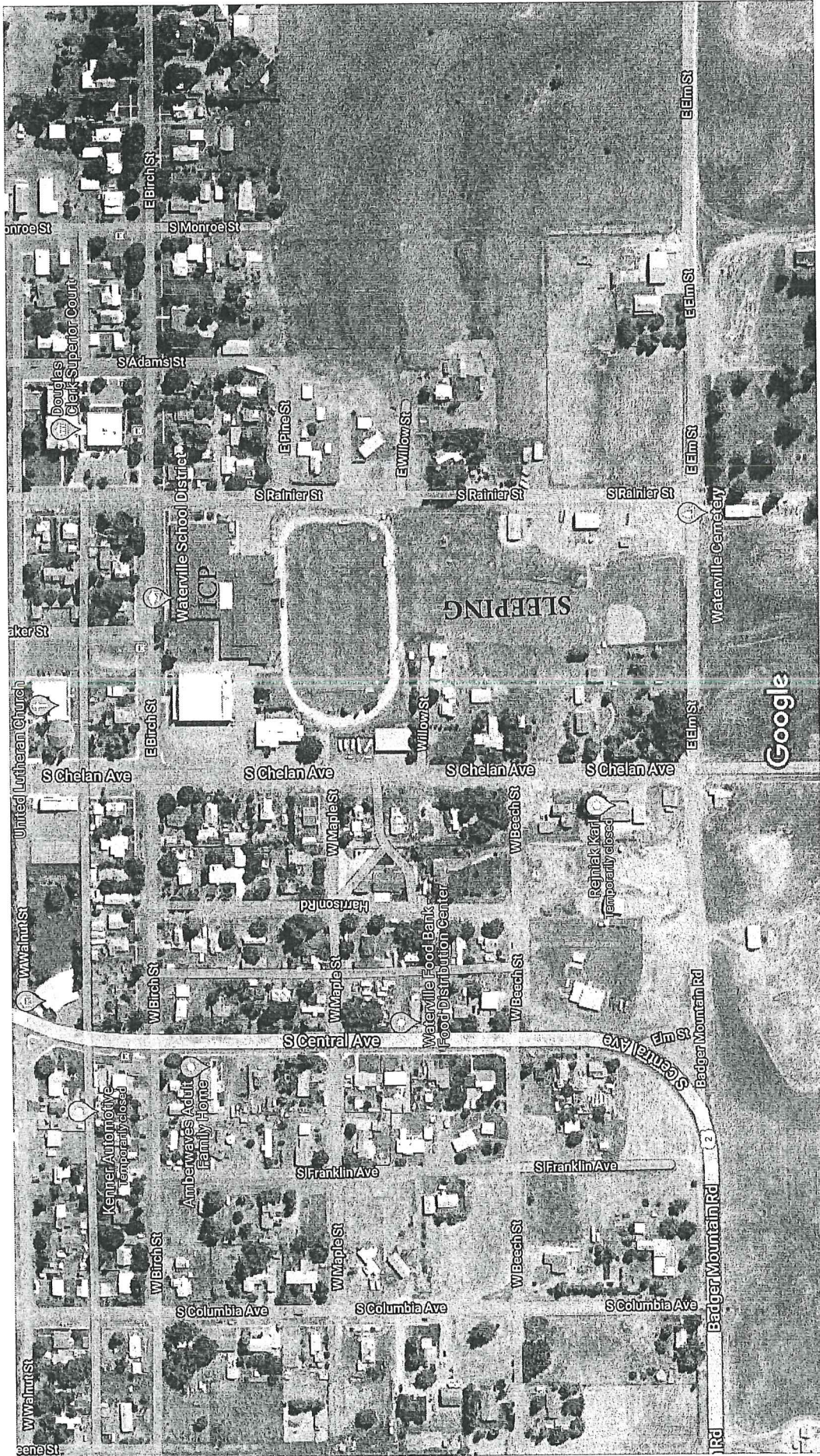
Continue onto US-2 E/2 1/2 Rd  
NW  
8.0 mi

Turn right onto H Rd SW  
4.1 mi

Turn left onto 4 Rd SW/AIstown  
Cutoff Rd  
1.0 mi

Arrive at Fire Area





Incident Risk Assessment Worksheet					1. Incident Name/Number		2. Location				
					Mohr Fire		Douglas County				
Identification of Hazards and Risk Assessment					3. Name and Title of Analyst		4. Date				
					Brenda Rodgers		Wednesday, August 11, 2022				
5. Pre-Control				6. Control or Abatement Action (Engineering, Administrative, PPE, Avoidance, Education, etc)			7. Post-Control				
8. Location	9. Hazard	10. Hazard Probability	11. Severity Code	12. RAC	Actions (Double-click in cell then click alt + enter to add a line)		13. Hazard Probability	14. Severity Code	15. RAC	16. Acceptable (Yes/No)	Export (Yes/No)
On Incident	Steep Terrain & Rolling Debris	Occasional C	Critical II	Moderate	<ul style="list-style-type: none"> <li>- Maintain 8'-10' spacing when working &amp; walking.</li> <li>- Don't work above any personnel.</li> <li>- Be on the lookout for rolling rocks, debris, or burning material.</li> <li>- Evaluate necessity to send personnel in areas with limited access.</li> <li>- Post lookouts (IRPG pg 6).</li> </ul>		Occasional C	Significant III	Minor	Yes	Yes
On Incident	Wind Event	Occasional C	Critical II	Moderate	<ul style="list-style-type: none"> <li>- Stay clear of all hazards that may be triggered by strong sustained winds.</li> <li>- Stay clear of all fire weakened and underburned trees.</li> <li>- Stay clear of all pre-existing overhead hazards.</li> </ul>		Occasional C	Significant III	Minor	Yes	Yes
On Incident	Bees, Ticks, Mosquitoes	Occasional C	Critical II	Moderate	<ul style="list-style-type: none"> <li>- Canvas crew members for those with known allergic reactions to stings.</li> <li>- Utilize medic to administer ALS in the event of allergic reaction</li> <li>- Ensure crew members have medication pens if needed.</li> <li>- Perform daily self inspection.</li> <li>- Use repellent as necessary.</li> <li>- Advanced Life Support, multi-dose epi and airway protection.</li> <li>- Keep affected area clean and bandaged.</li> <li>- Be extra careful when eating and/or drinking to avoid stings to mouth and throat.</li> </ul>		Occasional C	Significant III	Minor	Yes	Yes
On Incident	Firing Operations & Devices	Occasional C	Critical II	Moderate	<ul style="list-style-type: none"> <li>- Only personnel trained in the use of each device will be authorized to use firing equipment.</li> <li>- Ensure all personnel are aware of firing operation that may affect them.</li> <li>- Wear appropriate PPE.</li> <li>- Ensure aerial/ground Ignition plans have been adequately developed and personnel are briefed.</li> </ul>		Rarely D	Critical II	Minor	Yes	Yes
On Incident	Helicopter Operations	Rarely D	Catastrophic I	Moderate	<ul style="list-style-type: none"> <li>- Stay clear of all bucket drops when suppression actions are in place and allow 1 minute prior to re-entry.</li> <li>- Monitor A-G communications.</li> <li>- Follow aviation safety guidelines in IRPG and IHOG.</li> </ul>		Rarely D	Catastrophic I	Moderate	Yes	Yes
On Incident	Driving & Traffic	Likely B	Critical II	Serious	<ul style="list-style-type: none"> <li>- Practice "Defensive Driving" techniques traveling on all roads and city streets.</li> <li>- Use spotters when backing.</li> <li>- Honk horn to alert personnel when backing.</li> <li>- Keep clutter off dash and inside cab.</li> <li>- Follow Driving LOES (Lights, Chock blocks, Emergency brake, Seat belts.</li> <li>- Always use headlights.</li> <li>- Yield to pedestrians and bicycles.</li> <li>- Observe posted speed limits.</li> <li>- Use the 3 second rule for following distance when driving.</li> <li>- Use chock blocks, turn wheels into hill.</li> <li>- Avoid distractions (eating, cell phones, radio).</li> <li>- Ensure that windshields are kept clean of dust and bugs.</li> </ul>		Occasional C	Critical II	Moderate	Yes	Yes
On Incident	Air Operations	Occasional C	Significant III	Minor	<ul style="list-style-type: none"> <li>- Follow "Aviation Watch-Out Situations" on page 44, IRPG.</li> <li>- Don't plan on assigned air resources for medical transport or resupply.</li> <li>- Refer to page 57, IRPG for directing bucket drops.</li> <li>- Ensure positive communication with all air resources.</li> </ul>		Occasional C	Significant III	Minor	Yes	Yes
On Incident	Heavy Equipment Operations	Likely B	Critical II	Serious	<ul style="list-style-type: none"> <li>- Ensure communications are established with operators.</li> <li>- Use hand signals if other communications are unavailable.</li> <li>- Maintain a 50'-100' exclusion area around equipment and increase it to 1 1/2 times tree height when in timber.</li> <li>- Use a spotter when backing.</li> <li>- Avoid working below heavy equipment.</li> </ul>		Occasional C	Significant III	Minor	Yes	Yes
On Incident	Fatigue & Over Exertion	Occasional C	Significant III	Minor	<ul style="list-style-type: none"> <li>- Drink 1 quart of water each hour during and after work.</li> <li>- Rotate crews out of smoky areas.</li> <li>- Set a reasonable work pace and allow adequate rest breaks while on the project.</li> <li>- Stagger work crews start time to limit fatigue.</li> <li>- Use buddy system to monitor personnel of heat related and fatigue issues.</li> <li>- Follow work / rest guidelines.</li> </ul>		Occasional C	Significant III	Minor	Yes	Yes
On Incident	Injury & Medical Emergency	Occasional C	Critical II	Moderate	<ul style="list-style-type: none"> <li>- Assist injured employee appropriate medical care.</li> <li>- Use EMT's on Division for initial care.</li> <li>- Follow medical protocol as outlined in ICS-206 Medical Incident Report in the IAP</li> </ul>		Occasional C	Significant III	Minor	Yes	Yes
On Incident	Downhill Line Construction	Likely B	Significant III	Moderate	<ul style="list-style-type: none"> <li>- Post lookouts (IRPG pg. 6)</li> <li>- Follow downhill line construction guidelines (IRPG pg. 8)</li> </ul>		Occasional C	Significant III	Minor	Yes	Yes
On Incident	Mop-up & Rehab	Likely B	Significant III	Moderate	<ul style="list-style-type: none"> <li>- Do not work above or below personnel during rehab/mop-up operations.</li> <li>- Alert crew personnel of rolling debris by yelling to affected individuals.</li> <li>- Position debris that could roll vertically on slope.</li> <li>- Wear eye protection.</li> </ul>		Occasional C	Minor IV	Negligible	Yes	Yes
On Incident	Communications	Likely B	Significant III	Moderate	<ul style="list-style-type: none"> <li>- Maintain communication with aviation resources, and suppression organization.</li> <li>- Ensure all know frequency and protocol for contacting resources.</li> <li>- Utilize the ICS 205.</li> <li>- Utilize human repeaters when working in dead spots.</li> </ul>		Rarely D	Significant III	Negligible	Yes	Yes
On Incident	Unburned Area/Reburn Potential	Occasional C	Significant III	Minor	<ul style="list-style-type: none"> <li>- Monitor weather.</li> <li>- Base actions upon observed and predicted fire behavior.</li> <li>- LCES Checklist (IRPG pg. 6).</li> <li>- Look Up, Down and Around (IRPG pg. 2-3).</li> </ul>		Rarely D	Minor IV	Negligible	Yes	Yes
On Incident	Night Operations	Occasional C	Significant III	Minor	<ul style="list-style-type: none"> <li>- Maintain high visibility in work area and wear vest while in roadway.</li> <li>- Use glow sticks to mark hazards.</li> <li>- Ensure personnel have a personal light (headlamp).</li> <li>- Watch for signs of fatigue.</li> <li>- Take breaks away from areas of known hazard.</li> </ul>		Rarely D	Minor IV	Negligible	Yes	Yes
On Incident	Heat Related Illness (HRI) & Dehydration	Occasional C	Significant III	Minor	<ul style="list-style-type: none"> <li>- Drink Fluids throughout operational period (6-8 qts/shift).</li> <li>- Maintain water/electrolyte ratio of 3 to 1.</li> <li>- Carry extra water on line and cache water at drop points.</li> <li>- Take Frequent breaks, minimum of 10 minutes every hour.</li> <li>- Allow out of area resources time to acclimatize before expecting peak performance.</li> <li>- Recognize symptoms of HEAT RELATED ILLNESS which include: <ul style="list-style-type: none"> <li>o Lack of energy</li> <li>o Headaches, dizziness</li> <li>o Lack of rest</li> <li>o No hunger, poor eating habits</li> <li>o Hot skin, and lack of sweating</li> </ul> </li> </ul>		Rarely D	Minor IV	Negligible	Yes	Yes

## MEDICAL PLAN (ICS 206)

<b>1. Incident Name:</b> <p style="text-align: center;">Mohr Canyon</p>		<b>2. Operational Period:</b>		Date From: 8/11/22	Date To: 8/12/22		
				Time From: 600	Time To: 600		
<b>3. Medical Aid Stations:</b>							
Name	Location	Contact Number/Freq	Paramedics				
<b>4. Transportation (indicate air or ground):</b>							
Ambulance Service	Location	Contact Number	Level of Service				
Ballard (ground)	Wenatchee	911	ALS				
Airlift Northwest (air)	Wenatchee	911	ALS				
<b>5. Hospitals:</b>							
Hospital Name	Address,	Contact Number(s)/ Frequency	Travel Time		Trauma Center	Burn Center	Helipad
	Lat & Long		Air	Ground			
Wenatchee Valley Hospital	820 N. Chelan Avenue, Wenatchee, 98801, Lat/Long: 47.4335292793, -120.323086635	(509) 665-5850		00:46	Level 4	<input type="checkbox"/>	<input checked="" type="checkbox"/>
Central Washington Hospital	1201 South Miller Street, Wenatchee, 98807, Lat/Long: 47.4066046458, -120.321030512	(509) 662-1511	00:05	00:44	Level 3	<input type="checkbox"/>	<input checked="" type="checkbox"/>
Quincy Valley Medical Center	908 10th Ave SW, Quincy, 98848, Lat/Long: 47.2309066978, -119.868172237	(509) 787-3531	00:08	00:47	Level 5	<input type="checkbox"/>	<input checked="" type="checkbox"/>
						<input type="checkbox"/>	<input type="checkbox"/>
						<input type="checkbox"/>	<input type="checkbox"/>
<b>6. Special Medical Emergency Procedures</b>							
<b>Line Emergency</b> Crew Supervisor will contact Division Supervisor with patient complaint/condition and location. - Division Group Supervisor Contacts: 1. Closest EMS resource 2. Communications Unit - Communications Unit Contacts: 1. Ground or Air ambulance as requested. 2. Operations 3. Safety 4. Medical Unit - Division Supervisor or designee will serve as point of contact and run medical emergency on assigned channel. 1. A pre-assigned tactical frequency (i.e. CALCORD) should be used for IWI and only for duration of the emergency. - Communications Unit will clear the Command channel for emergency traffic as needed for duration of the need.				<b>Injury Reporting Procedures</b>  Nature of Injury: _____ Location of Patient: _____ Point of Contact: _____ Transportation Requested by: Air _____ Ground _____ Point of Pick-Up: _____ Lat: _____ Long: _____ Patient Unit ID: _____ Is an EMT with Patient: Yes _____ No _____ Age: _____ Sex: Male _____ Female _____			
<b>Camp Emergency</b> Contact Medical Unit with patient complaint/condition and location. Medical staff will respond to stabilize the patient. - Medical Unit contacts 1. Communications 2. Safety 3. Logistics 4. Operations 5. Crew Supervisor 6. Comp/Claims				<b>All Emergencies - Secure the area and identified witnesses for later investigation. Keep accurate log of events.</b>			
<input type="checkbox"/> Check box if aviation assets are utilized for rescue. If assets are used, coordinate with Air Operations.							
<b>7. Prepared by (Medical Unit Leader):</b>				Signature: _____			
<b>8. Approved by (Safety Officer):</b>				Signature: _____			
ICS 206	NIMS IAP			Date/Time: _____			





# MEDICAL PLAN (ICS 206 WF)

Controlled Unclassified Information//Basic

## Medical Incident Report

**FOR A NON-EMERGENCY INCIDENT, WORK THROUGH CHAIN OF COMMAND TO REPORT AND TRANSPORT INJURED PERSONNEL AS NECESSARY.**

**FOR A MEDICAL EMERGENCY: IDENTIFY ON-SCENE INCIDENT COMMANDER BY NAME AND POSITION AND ANNOUNCE "MEDICAL EMERGENCY" TO INITIATE RESPONSE FROM IMT COMMUNICATIONS/DISPATCH.**

**Use the following items to communicate situation to communications/dispatch.**

**1. CONTACT COMMUNICATIONS / DISPATCH** (Verify correct frequency prior to starting report)

*Ex: "Communications, Div. Alpha. Stand-by for Emergency Traffic."*

**2. INCIDENT STATUS:** Provide incident summary (including number of patients) and command structure.

*Ex: "Communications, I have a Red priority patient, unconscious, struck by a falling tree. Requesting air ambulance to Forest Road 1 at (Lat./Long.) This will be the Trout Meadow Medical, IC is TFLD Jones. EMT Smith is providing medical care."*

Severity of Emergency / Transport Priority	<input type="checkbox"/> <b>RED / PRIORITY 1 Life or limb threatening injury or illness. Evacuation need is IMMEDIATE</b> <i>Ex: Unconscious, difficulty breathing, bleeding severely, 2° – 3° burns more than 4 palm sizes, heat stroke, disoriented.</i> <input type="checkbox"/> <b>YELLOW / PRIORITY 2 Serious Injury or illness. Evacuation may be DELAYED if necessary.</b> <i>Ex: Significant trauma, unable to walk, 2° – 3° burns not more than 1-3 palm sizes.</i> <input type="checkbox"/> <b>GREEN / PRIORITY 3 Minor Injury or illness. Non-Emergency transport</b> <i>Ex: Sprains, strains, minor heat-related illness.</i>	
Nature of Injury or Illness & Mechanism of Injury		<i>Brief Summary of Injury or Illness (Ex: Unconscious, Struck by Falling Tree)</i>
Evacuation Request		<i>Air Ambulance / Short Haul/Hoist Ground Ambulance / Other</i>
Patient Location		<i>Descriptive Location &amp; Lat. / Long. (WGS84)</i>
Incident Name		<i>Geographic Name + Medical (Ex: Trout Meadow Medical)</i>
On-Scene Incident Commander		<i>Name of on-scene IC of Incident within an Incident (Ex: TFLD Jones)</i>
Patient Care		<i>Name of Care Provider (Ex: EMT Smith)</i>

**3. INITIAL PATIENT ASSESSMENT:** Complete this section for each patient as applicable (start with the most severe patient)

Patient Assessment: See IRPG PAGE 106

Treatment:

**4. EVACUATION PLAN:**

Evacuation Location (if different): (Descriptive Location (drop point, intersection, etc.) or Lat. / Long.) Patient's ETA to Evacuation Location:

Helispot / Extraction Site Size and Hazards:

**5. ADDITIONAL RESOURCES / EQUIPMENT NEEDS:**

*Example: Paramedic/EMT, crews, immobilization devices, AED, oxygen, trauma bag, IV/fluid(s), splints, rope rescue, wheeled litter, HAZMAT, extrication*

**6. COMMUNICATIONS: Identify State Air/Ground EMS Frequencies and Hospital Contacts as applicable**

Function	Channel Name/Number	Receive (RX)	Tone/NAC *	Transmit (TX)	Tone/NAC *
COMMAND					
AIR-TO-GRND					
TACTICAL					

**7. CONTINGENCY: Considerations:** If primary options fail, what actions can be implemented in conjunction with primary evacuation method? Be thinking ahead..

**8. ADDITIONAL INFORMATION:** Updates/Changes, etc.

**REMEMBER:** Confirm ETAs of resources ordered. Act according to your level of training. Be Alert. Keep Calm. Think Clearly. Act Decisively.