

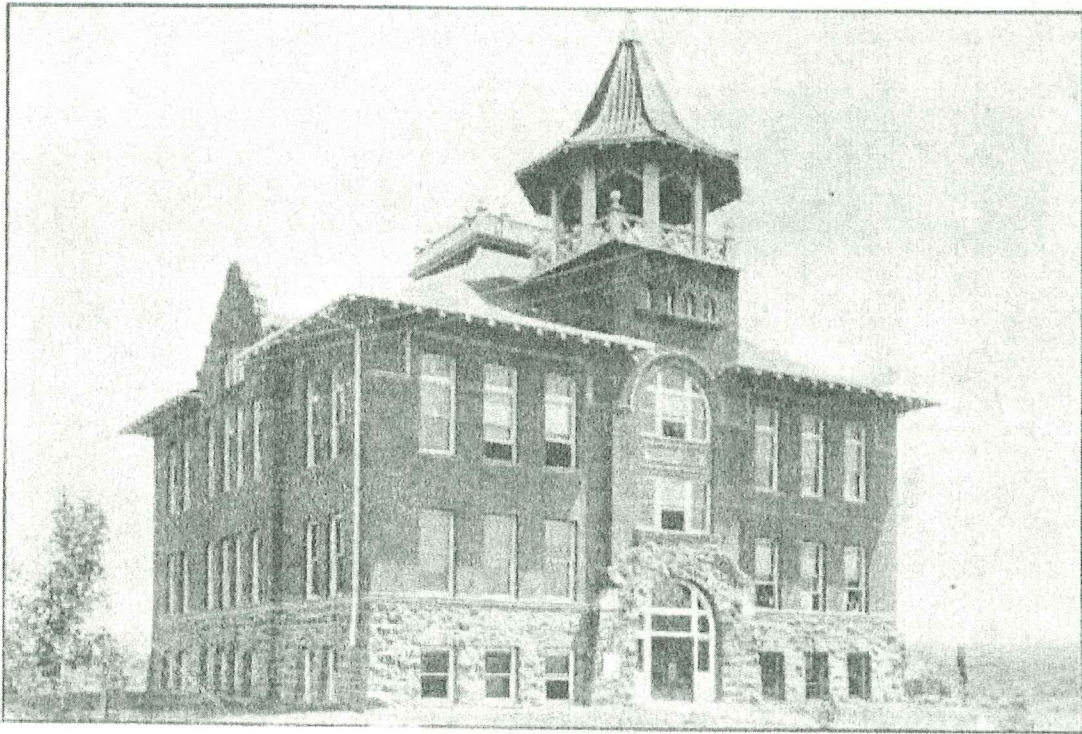
INCIDENT ACTION PLAN

MOHR INCIDENT

WA-SPD-000307

221-CTA / PZM8 / WA-WFS-000306

Saturday - Monday



DOUGLAS COUNTY COURT HOUSE, WATERVILLE, WASH.
Published by Alexander Mercantile Co., Waterville, Wash.

Saturday - Monday

8/13/2022 0600

to

8/15/2022 1800

ORGANIZATION ASSIGNMENT LIST (ICS 203)

1. Incident Name: MOHR		2. Operational Period: Date From: 8/13/2022		Date To: 8/15/2022	
		Time From: 0600		Time To: 1800	
3. Incident Commander(s) and Command Staff:			7. Operation Section:		
IC/UC's	Josh Dominguez		Operations		
Deputy			Deputy Operations		
Safety Officer			Night Ops		
Information Officer			Staging Area		
Liaison Officer			Branch	I	
4. Agency/Organization Representatives:			Division/Group	A/E	
Agency/Organization	Name		Division/Group		
			Division/Group		
			Division/Group		
			Division/Group		
			Branch	II	
			Division/Group		
			Division/Group		
			Division/Group		
			Division/Group		
			Division/Group		
			Branch	III	
			Division/Group		
			Division/Group		
			Division/Group		
			Division/Group		
			Division/Group		
			Branch	IV	
			Division/Group		
5. Planning Section:			Division/Group		
Chief			Division/Group		
Deputy			Division/Group		
Resource Unit			Division/Group		
Situation Unit			Branch	V	
Documentation Unit			Division/Group		
Demobilization Unit			Division/Group		
GISS			Division/Group		
FBAN			Division/Group		
IMET			Division/Group		
Training Tech Spec			Air Operations Branch		Director:
			Air Support Group Supervisor		
			Air Tactical Group Supervisor		
6. Logistics Section			Helibase Manager		
Chief	Josh Ambrose				
Supply Unit			8. Finance/Administration Section:		
Facilities Unit			Chief		
Ground Support Unit			Deputy		
Communications Unit			Procurement Unit		
Medical Unit			Comp/Claims Unit		
			Cost Unit		
Prepared By: Name:		Position/Title:	PSC	Jennifer Norton PSC3(t)	
ICS 203		Date/Time:	8/12/2022	2300 hours	



Fire Weather Forecast



FORECAST NO: 3

NAME OF FIRE: Mohr

PREDICTION FOR: August 13 - 15, 2022

SIGNED:

TIME/DATE ISSUED: August 12, 2022 @ 1400

WEATHER DISCUSSION:

...Gusty westerly winds Saturday...

A cold front moves across the fire tonight (FRI) with cooler air moving into the region Saturday. This will promote gusty westerly winds through the day coupled with dry conditions. High pressure slowly builds into the region Sunday and continues through at least Wednesday delivering another warming and drying trend. High temperatures by midweek will be approaching the upper 90s to lower 100s. Winds Sunday into early next week will become light and diurnally/terrain driven.

WEATHER FORECAST FOR TODAY:

Sky/weather.....Sunny.
CWR.....0 percent.
LAL.....1.
Max temperature.....83-85.
Min humidity.....19-23 percent.
Wind (20 ft).....West winds 8 to 13 mph with gusts to around 20 mph...increasing west 12 to 16 mph with gusts to 30 mph around 1700 pdt.
Mixing height.....800 ft AGL in the morning increasing to 7500 ft AGL in the afternoon.
Transport winds.....West around 12 mph.
Haines Index.....4 or low potential for large plume dominated fire growth.

WEATHER FORECAST FOR TONIGHT:

Sky/weather.....Clear.
CWR.....0 percent.
LAL.....1.
Min temperature.....49-52.
Max humidity.....68-73 percent.
Wind (20 ft).....West winds 10 to 14 mph with gusts to around 25 mph in the evening...becoming northwest 6 to 9 mph overnight.
Mixing height.....4500 ft AGL in the evening decreasing to near the surface overnight.
Transport winds.....Northwest around 12 mph.
Haines Index.....4 or low potential for large plume dominated fire growth.

OUTLOOK FOR TOMMOROW:

Sky/weather.....Sunny.
CWR.....0 percent.
LAL.....1.
Max temperature.....85-89.
Min humidity.....15-18 percent.
Wind (20 ft).....Northwest winds 5 to 7 mph in the morning shifting to the southwest 5 to 9 mph in the afternoon.
Mixing height.....Near surface in the morning increasing to 8500 ft AGL in the afternoon.
Transport winds.....Northwest around 7 mph.
Haines Index.....3 or very low potential for large plume dominated fire growth.

EXTENDED FORECAST:

MONDAY...Mostly clear. Lows in the upper 50s. Highs near 90. Min humidity 12-18%. Terrain driven winds of 3 to 8 mph.

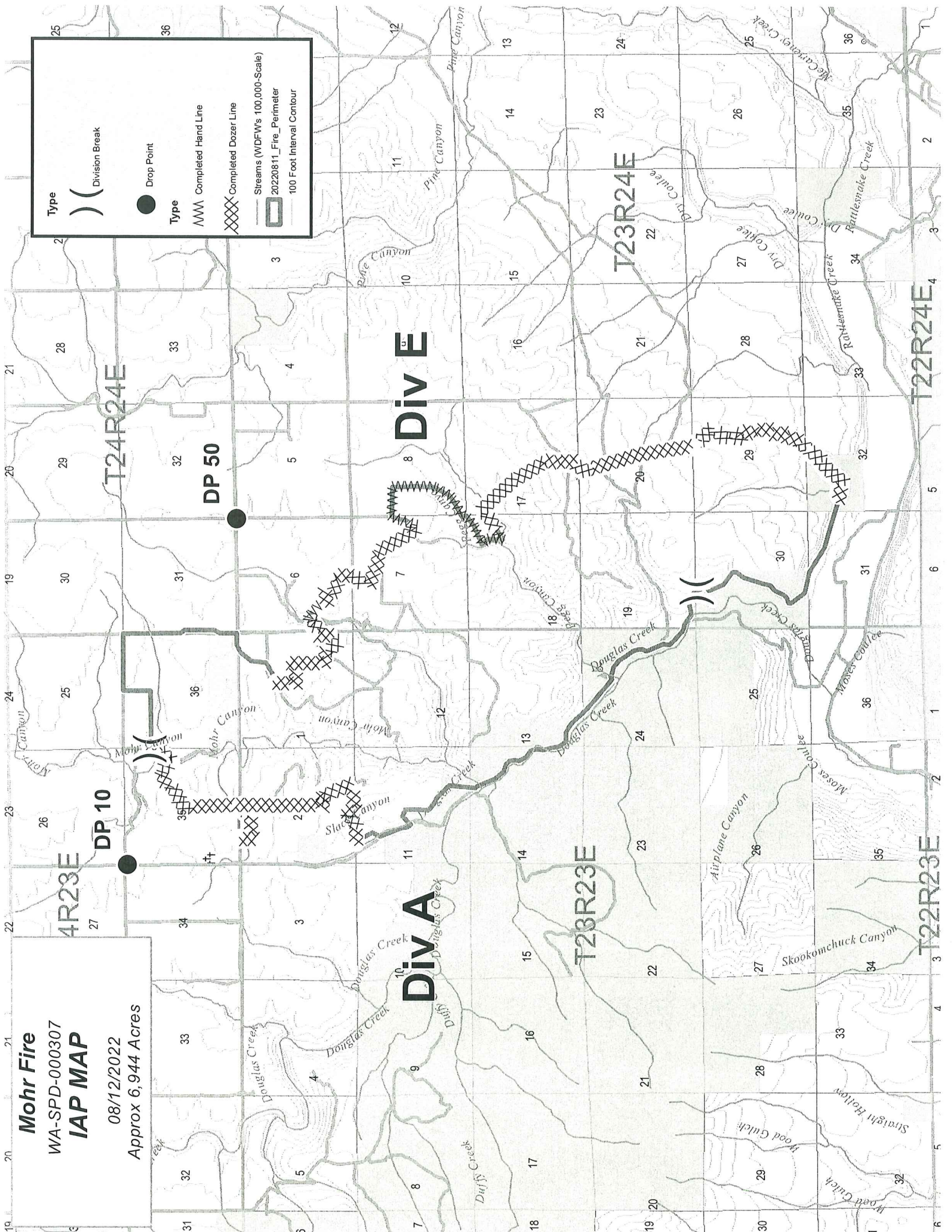
TUESDAY...Clear. Lows in the lower 60s. Highs in the lower to mid 90s. Min humidity 11-17%. Light terrain driven winds 3 to 8 mph.

WEDNESDAY...Clear. Lows in the mid 60s. Highs 95 to 101. Min humidity 9-14%. North winds 3 to 7 mph.

Mohr Fire
WA-SPD-000307
IAP MAP

08/12/2022
Approx 6,944 Acres

Type	()	Division Break
Type	●	Drop Point
Type	——	Completed Hand Line
Type	XXXX	Completed Dozer Line
Streams (WDFW's 100,000-Scale)		
20220811_Fire_Perimeter		
100 Foot Interval Contour		



ICS 205 - INCIDENT RADIO COMMUNICATIONS PLAN		CONTROLLED UNCLASSIFIED INFORMATION//BASIC						
1. Incident Name: MOHR		3. Operational Period: Date From: 08/13/22 Date To: 08/15/22 Time From: 0600 Time To: 1800						
2. Date/Time Prepared Date: 08/12/2022 Time: 1500								
Incident Channels								
4. Communications								
Ch#	Function	Name	Assigned To	Rx Freq	Rx Tone	Tx Freq	Tx Tone	Notes
1	TACTICAL	SOA	ALL DIVS	167.775	0	167.775	0	
2	TACTICAL	DNR COM	ALL DIVS	151.415	103.5	151.415	103.5	
3	TACTICAL	REDNET	ALL DIVS	153.8300	0	153.8300	0	
4	TACTICAL	BLACK	ALL DIVS	154.3400	151.4	154.3400	151.4	
5	TACTICAL	BLUE TAC	ALL DIVS	154.1600	107.2	154.1600	107.2	
6	TACTICAL	CO FIRE 1	I/A	154.4300	110.9	153.8900	D051	
7	TACTICAL	DNR CHELAN	ALL DIVS	159.2250	156.7	151.4750	156.7	
8	TACTICAL	DNR BADGER	ALL DIVS	159.4425	127.3	151.2125	127.3	
9	COMMAND	MOSES STOOL	ALL DIVS	169.675	100	164.0875	123	
10	TACTICAL	ST GRANT	ALL DIVS	159.4200	D431	151.2950	D431	
11	TACTICAL	ST MANSON	ALL DIVS	159.4200	D346	151.2950	D346	
12	TACTICAL	ST BADGER	ALL DIVS	159.4200	D606	151.2950	D606	
13	TACTICAL	CO FIRE 2	ALL DIVS	155.6850	107.2	153.9500	D051	
14	AIR TO GROUND	DNR A/G1	ALL DIVS	159.2700	103.5	159.2700	103.5	
15	AIR TO GROUND	A/G 78	ALL DIVS	168.5750	0	168.5750	0	
16	TACTICAL	AIRGUARD	ALL DIVS	168.6250	0	168.6250	110.9	
17								
18								
19								
20								
5. Special Instructions								
6. Prepared by (Communications Unit Leader): Name: _____			Signature: _____					
ICS 205 - CONTROLLED UNCLASSIFIED INFORMATION//BASIC			NIMS IAP		Date/Time: 08/12/2022	1500		

Safety Message

Mohr Canyon

Date: 8 - 13 thru 16 - 2022

Shift: Day

Risk Management

Identify Hazards (Situation Awareness)

- Gather Information (Objectives, Communication, Fire behavior, Weather Forecast, Local Factors)

Assess Hazards

- Estimate Potential Fire Behavior Hazards (Look up/down/around)
- Identify Tactical Hazards (watch Outs)

Develop Controls and Make Risk Decisions

- Develop control measures that reduce risk (Firefighting Orders-LCES)
- What other controls are necessary?
- What other control are necessary? (PPE, Engineering, Educational, avoidance)
- Emergency Medevac Procedures/Plan

Implement Controls

- Ensure controls are in place and being implemented by personnel
- Ensure controls are integrated into operational plan and understood at all levels.

Supervise and Evaluate

- Are controls adequately mitigating the hazards?
 - Human Factors: Low experience level, Distracted from primary tasks, Fatigue or stress, Unsafe attitude
 - The Situation: What is changing, Are strategy and tactics working

Take care of yourself and your crew!

Distracted Driving

Three primary types of distractions:

1. Manual: taking your hands off the wheel
2. Visual: taking your eyes off the road
3. Cognitive: taking your mind off driving

- Driving while using a cell phone reduces brain activity associated with driving by 37%.
- Phone conversations increase reaction times and increase variations in speed, lane deviations and steering wheel control.
- Texting takes your eyes off the road for average 4.6 seconds. At 60 mph you will travel 88' per second.

DRIVE DEFENSIVELY!



Water helps maintain blood volume and allows proper circulation, helps regulate our body temperature, and acts as a shock absorber for our joints and our brain. There are still more health benefits of water: It helps lubricate the linings of our inner organs and maintains healthy kidney function.
Hydrate, Hydrate, Hydrate!

Incident Risk Assessment Worksheet					1. Incident Name/Number Mohr - WA-SPD-000307		2. Location Douglas County				
Identification of Hazards and Risk Assessment					3. Name and Title of Analyst Brenda Rodgers		4. Date Wednesday, August 13 thru 16, 2022				
5. Pre-Control					6. Control or Abatement Action (Engineering, Administrative, PPE, Avoidance, Education, etc) Actions (double-click in cell then click alt + enter to add a line)		7. Post-Control				
8. Location	9. Hazard	10. Hazard Probability	11. Severity Code	12. RAC			13. Hazard Probability	14. Severity Code	15. RAC	16. Acceptable (Yes/No)	Export (Yes/No)
On Incident	Steep Terrain & Rolling Debris	Occasional C	Critical II	Moderate	<ul style="list-style-type: none"> ~ Maintain 8'-10' spacing when working & walking. ~ Don't work above any personnel. ~ Be on the lookout for rolling rocks, debris, or burning material. ~ Evaluate necessity to send personnel in areas with limited access. ~ Post lookouts (IRPG pg 6). 		Occasional C	Significant III	Minor	Yes	Yes
On Incident	Wind Event	Occasional C	Critical II	Moderate	<ul style="list-style-type: none"> ~ Stay clear of all hazards that may be triggered by strong sustained winds. ~ Stay clear of all fire weakened and underburned trees. ~ Stay clear of all pre-existing overhead hazards. 		Occasional C	Significant III	Minor	Yes	Yes
On Incident	Bees, Ticks, Mosquitoes	Occasional C	Critical II	Moderate	<ul style="list-style-type: none"> ~ Canvas crew members for those with known allergic reactions to slings. ~ Utilize medic to administer ALS in the event of allergic reaction ~ Ensure crew members have medication pens if needed. ~ Perform daily self inspection. ~ Use repellent as necessary. ~ Advanced Life Support, multi-dose epi and airway protection. ~ Keep affected area clean and bandaged. ~ Be extra careful when eating and/or drinking to avoid stings to mouth and throat. 		Occasional C	Significant III	Minor	Yes	Yes
On Incident	Driving & Traffic	Likely B	Critical II	Serious	<ul style="list-style-type: none"> ~ Practice "Defensive Driving" techniques traveling on all roads and city streets. ~ Use spotters when backing. ~ Honk horn to alert personnel when backing. ~ Keep clutter off dash and inside cab. ~ Follow Driving LCES (Lights, Chock blocks, Emergency brake, Seat belts. ~ Always use headlights. ~ Yield to pedestrians and bicycles. ~ Observe posted speed limits. ~ Use the 3 second rule for following distance when driving. ~ Use chock blocks, turn wheels into hill. ~ Avoid distractions (eating, cell phones, radio). ~ Ensure that windshields are kept clean of dust and bugs. 		Occasional C	Critical II	Moderate	Yes	Yes
On Incident	Fatigue & Over Exertion	Occasional C	Significant III	Minor	<ul style="list-style-type: none"> ~ Drink 1 quart of water each hour during and after work. ~ Rotate crews out of smoky areas. ~ Set a reasonable work pace and allow adequate rest breaks while on the project. ~ Stagger work crews start time to limit fatigue. ~ Use buddy system to monitor personnel of heat related and fatigue issues. ~ Follow work / rest guidelines. 		Occasional C	Significant III	Minor	Yes	Yes
On Incident	Injury & Medical Emergency	Occasional C	Critical II	Moderate	<ul style="list-style-type: none"> ~ Assist injured employee appropriate medical care. ~ Use EMT's on Division for initial care. ~ Follow medical protocol as outlined in ICS-206 Medical Incident Report in the IAP 		Occasional C	Significant III	Minor	Yes	Yes
On Incident	Mop-up & Rehab	Likely B	Significant III	Moderate	<ul style="list-style-type: none"> ~ Do not work above or below personnel during rehab/mop-up operations. ~ Alert crew personnel of rolling debris by yelling to affected individuals. ~ Position debris that could roll vertically on slope. ~ Wear eye protection. 		Occasional C	Minor IV	Negligible	Yes	Yes
On Incident	Communications	Likely B	Significant III	Moderate	<ul style="list-style-type: none"> ~ Maintain communication with aviation resources, and suppression organization. ~ Ensure all know frequency and protocol for contacting resources. ~ Utilize the ICS 205. ~ Utilize human repeaters when working in dead spots. 		Rarely D	Significant III	Negligible	Yes	Yes
On Incident	Unburned Area/Reburn Potential	Occasional C	Significant III	Minor	<ul style="list-style-type: none"> ~ Monitor weather. ~ Base actions upon observed and predicted fire behavior. ~ LCES Checklist (IRPG pg. 6). ~ Look Up, Down and Around (IRPG pg. 2-3). 		Rarely D	Minor IV	Negligible	Yes	Yes
On Incident	Heat Related Illness (HRI)& Dehydration	Occasional C	Significant III	Minor	<ul style="list-style-type: none"> ~ Drink Fluids throughout operational period (6-8 qts/shift). ~ Maintain water/electrolyte ratio of 3 to 1. ~ Carry extra water on line and cache water at drop points. ~ Take frequent breaks, minimum of 10 minutes every hour. ~ Allow out of area resources time to acclimatize before expecting peak performance. ~ Recognize symptoms of HEAT RELATED ILLNESS 		Rarely D	Minor IV	Negligible	Yes	Yes

Brenda Rodgers

Preparer's Signature

Mohr Fire IMT TURNBACK STANDARDS
Bureau of Land Management - Spokane District
Date 8/11/2022

These standards may be adjusted and modified as the incident progresses but are intended to give the IMT direction for planning. Mop-up specifications and Fire Suppression Repair standards apply to BLM managed lands.

Mop-Up Specifications

Achieve 100% mop-up along and inside the fire perimeter to a distance that is adequate to ensure the perimeter is secure to prevent the fire from escaping or spotting across existing containment lines.

Spot fires outside the control lines will be 100% mopped up where appropriate to do so, a route to them will be flagged, and the perimeter of spots mapped in GIS.

Mop-up of partially burned areas further inside the lines will be determined on a case-by-case basis.

For sensitive resources within the interior of the fireline, mop-up to a level to ensure that there will be no future effects from the fire.

As mop-up specifications are met on a Division, Operations will develop a plan for the resources and equipment to be left in place that may be required for future contingency actions.

Mop-up will be verified by infrared equipment and/or gridded prior to fire turn back to Land Manager or Protecting Agency.

- Some areas may require additional mop-up commensurate with the risk of possible escape. (i.e. dirty burns)
- Mop-up around structures and infrastructure at a minimum of 100' in circumference around the structure.
- Use ground-based IR to verify mop-up percentage around structures or improvements. (mop-up cont'd)
- Fire must be secured from rolling material or falling trees crossing control lines, powerlines or roads.

Notify Agency Representative if a cultural site is found during mop-up.

Fire Suppression Repair Standards

Resource Advisors may be assigned by Agency Administrators to approve completed repair work. Resource Advisors will not guide suppression actions or decisions.

All suppression features, including but not limited to the following, will be GPS'd with Maps and GIS files given to the home unit.

- constructed fire lines (hand and dozer)
- equipment left in place
- roads that were opened/closed
- road modifications such as pullouts, parking areas, turnarounds that were constructed during incident
- safety zones
- helispots
- drop points

- water sources
- other disturbed areas

Fences/gates, range developments, cattle guards, etc. damaged or destroyed by suppression activities including burnout operations or dozer line will be GPSed and GIS files given to the home unit.

Stock ponds used for drafting water will be mapped.

Specifically for this incident, turnback will include the following:

Knock down berms on all dozer lines; identify those which may be needed longer term.

Leave flagging in place which marks hazards, resource concerns, etc. Remove all other flagging, signs, and garbage created by the incident.

All drainages (intermittent and perennial), meadows, and springs – remove all soil, slash, and other debris that has been pushed into these areas. Streams should match natural upstream and downstream conditions.

All water drafting sites (streams and lakes) – return area to pre-fire condition.

Remove all supplies, equipment and trash not needed for contingency.

Handline Rehab Standards

- Reduce berm height to less than 12 inches and blend into surrounding land.
- Water bars shall be installed to drain, roughly 45° angle downslope from contour (not parallel to contour) , and placed a minimum of 50’ (on slopes greater than 15% (8.5 ° gradient) to 25’-(on slopes greater than 30% (17 ° gradient)
- Ensure end of water bar is open and clear of obstructions.
- Angle handline drainage into green (unburned areas) when possible.
- Remove any brush/slash from drainages that was placed there during the fire.

Dozer line/4x4 roads –

- Reduce berm height to less than 18 inches.
- Construct dozer line water bars so the bottom of the water bar (ditch) is 6” below grade.
- Dozer line water bars shall be installed to drain, not steeper than 45° angle downslope from contour and not parallel to contour and placed a minimum of 50’ (on slopes greater than 15% (8.5 degrees gradient) to 25’-(on slopes greater than 30% (17 degrees gradient).
- Spacing for dozer line water bars shall depend on slope gradient as follows:

Gradient	Feet
1-14	None
15-20	250
21-30	150
31-40	75
41+	30

* may require hand work or an excavator.

- Ensure end of dozer line water bar is open and clear of obstructions.

- Angle dozer line drainage into green (unburned areas) when possible.
- Remove any brush/slash from drainages that was placed there during the fire.
- Disguise or block access to dozer line when possible.

Turn back Standards:

Prior to turning the fire back to the local agencies turn-back standards shall be met. The Incident Commander, and BLM shall agree as minimum the following criteria.

- All mop-up standards have been met.
- Threat to the district/department is no longer viable.
- Fire District/department personnel have recovered and are ready to assume normal operations
- Final approval for completion of Fire Suppression Repair Standards for the Mohr Fire on Spokane District BLM, and private lands will be the respective Agency Representatives.
- All completed Fire Suppression Repair work will be documented including progressive reporting to the Agency Representative of completed work, GIS mapping of completed work, and may include photographs of special projects. A final report / map product documenting all completed and remaining work at time of closeout will be provided to the Agency Representative.

MEDICAL PLAN (ICS 206)

1. Incident Name: <p style="text-align: center;">Mohr</p>	2. Operational Period: Date From: 8/13/22 Date To: 8/15/22 Time From: 600 Time To: 1800
---	--

3. Medical Aid Stations:			
Name	Location	Contact Number/Freq	Paramedics

4. Transportation (indicate air or ground):			
Ambulance Service	Location	Contact Number	Level of Service
Ballard (ground)	Wenatchee	911	ALS
Airlift Northwest (air)	Wenatchee	911	ALS

5. Hospitals:							
Hospital Name	Address,	Contact Number(s)/ Frequency	Travel Time		Trauma Center	Burn Center	Helipad
	Lat & Long		Air	Ground			
Wenatchee Valley Hospital	820 N. Chelan Avenue, Wenatchee, 98801, Lat/Long: 47.4335292793, -120.323086635	(509) 665-5850		00:46	Level 4	<input type="checkbox"/>	<input checked="" type="checkbox"/>
Central Washington Hospital	1201 South Miller Street, Wenatchee, 98807, Lat/Long: 47.4066046458, -120.321030512	(509) 662-1511	00:05	00:44	Level 3	<input type="checkbox"/>	<input checked="" type="checkbox"/>
Quincy Valley Medical Center	908 10th Ave SW, Quincy, 98848, Lat/Long: 47.2309066978, -119.868172237	(509) 787-3531	00:08	00:47	Level 5	<input type="checkbox"/>	<input checked="" type="checkbox"/>
						<input type="checkbox"/>	<input type="checkbox"/>
						<input type="checkbox"/>	<input type="checkbox"/>

6. Special Medical Emergency Procedures	
<p>Line Emergency Crew Supervisor will contact Division Supervisor with patient complaint/condition and location.</p> <ul style="list-style-type: none"> - Division Group Supervisor Contacts: <ol style="list-style-type: none"> 1. Closest EMS resource 2. Communications Unit - Communications Unit Contacts: <ol style="list-style-type: none"> 1. Ground or Air ambulance as requested. 2. Operations 3. Safety 4. Medical Unit - Division Supervisor or designee will serve as point of contact and run medical emergency on assigned channel. <ol style="list-style-type: none"> 1. A pre-assigned tactical frequency (i.e. CALCORD) should be used for IWI and only for duration of the emergency. - Communications Unit will clear the Command channel for emergency traffic as needed for duration of the need. <p>Camp Emergency Contact Medical Unit with patient complaint/condition and location. Medical staff will respond to stabilize the patient.</p> <ul style="list-style-type: none"> - Medical Unit contacts <ol style="list-style-type: none"> 1. Communications 2. Safety 3. Logistics 4. Operations 5. Crew Supervisor 6. Comp/Claims 	<p>Injury Reporting Procedures</p> <p>Nature of Injury: _____ Location of Patient: _____ Point of Contact: _____ Transportation Requested by: Air ___ Ground ___ Point of Pick-Up: _____ Lat: _____ Long: _____ Patient Unit ID: _____ Is an EMT with Patient: Yes _____ No _____ Age: _____ Sex: Male _____ Female _____</p> <p>All Emergencies - Secure the area and identified witnesses for later investigation. Keep accurate log of events.</p>

Check box if aviation assets are utilized for rescue. If assets are used, coordinate with Air Operations.

7. Prepared by (Medical Unit Leader): _____
Signature: _____

8. Approved by (Safety Officer): _____
Signature: _____

MEDICAL PLAN (ICS 206 WF)

Controlled Unclassified Information//Basic

Medical Incident Report					
FOR A NON-EMERGENCY INCIDENT, WORK THROUGH CHAIN OF COMMAND TO REPORT AND TRANSPORT INJURED PERSONNEL AS NECESSARY. FOR A MEDICAL EMERGENCY: IDENTIFY ON SCENE INCIDENT COMMANDER BY NAME AND POSITION AND ANNOUNCE "MEDICAL EMERGENCY" TO INITIATE RESPONSE FROM IMT COMMUNICATIONS/DISPATCH.					
Use the following items to communicate situation to communications/dispatch.					
1. CONTACT COMMUNICATIONS / DISPATCH (Verify correct frequency prior to starting report) <i>Ex: "Communications, Div. Alpha. Stand-by for Emergency Traffic."</i>					
2. INCIDENT STATUS: Provide incident summary (including number of patients) and command structure. <i>Ex: "Communications, I have a Red priority patient, unconscious, struck by a falling tree. Requesting air ambulance to Forest Road 1 at (Lat./Long.) This will be the Trout Meadow Medical, IC is TFLD Jones. EMT Smith is providing medical care."</i>					
Severity of Emergency / Transport Priority	<input type="checkbox"/> RED / PRIORITY 1 Life or limb threatening injury or illness. Evacuation need is IMMEDIATE <i>Ex: Unconscious, difficulty breathing, bleeding severely, 2^o - 3^o burns more than 4 palm sizes, heat stroke, disoriented.</i> <input type="checkbox"/> YELLOW / PRIORITY 2 Serious Injury or illness. Evacuation may be DELAYED if necessary. <i>Ex: Significant trauma, unable to walk, 2^o - 3^o burns not more than 1-3 palm sizes.</i> <input type="checkbox"/> GREEN / PRIORITY 3 Minor Injury or illness. Non-Emergency transport <i>Ex: Sprains, strains, minor heat-related illness.</i>				
Nature of Injury or Illness & Mechanism of Injury			<i>Brief Summary of Injury or Illness (Ex: Unconscious, Struck by Falling Tree)</i>		
Transport Request			<i>Air Ambulance / Short Haul/Hoist Ground Ambulance / Other</i>		
Patient Location			<i>Descriptive Location & Lat. / Long. (WGS84)</i>		
Incident Name			<i>Geographic Name + "Medical" (Ex: Trout Meadow Medical)</i>		
On-Scene Incident Commander			<i>Name of on-scene IC of Incident within an Incident (Ex: TFLD Jones)</i>		
Patient Care			<i>Name of Care Provider (Ex: EMT Smith)</i>		
3. INITIAL PATIENT ASSESSMENT: Complete this section for each patient as applicable (start with the most severe patient)					
Patient Assessment: See IRPG page 106					
Treatment:					
4. TRANSPORT PLAN: Evacuation Location (if different): (Descriptive Location (drop point, intersection, etc.) or Lat. / Long.) Patient's ETA to Evacuation Location:					
Helispot / Extraction Site Size and Hazards:					
5. ADDITIONAL RESOURCES / EQUIPMENT NEEDS: <i>Example: Paramedic/EMT, Crews, Immobilization Devices, AED, Oxygen, Trauma Bag, IV/Fluid(s), Splints, Rope rescue, Wheeled litter, HAZMAT, Extrication</i>					
6. COMMUNICATIONS: Identify State Air/Ground EMS Frequencies and Hospital Contacts as applicable					
Function	Channel Name/Number	Receive (RX)	Tone/NAC *	Transmit (TX)	Tone/NAC *
COMMAND					
AIR-TO-GRND					
TACTICAL					
7. CONTINGENCY: Considerations: If primary options fail, what actions can be implemented in conjunction with primary evacuation method? Be thinking ahead.					
8. ADDITIONAL INFORMATION: Updates/Changes, etc.					
REMEMBER: Confirm ETA's of resources ordered. Act according to your level of training. Be Alert. Keep Calm. Think Clearly. Act Decisively.					