

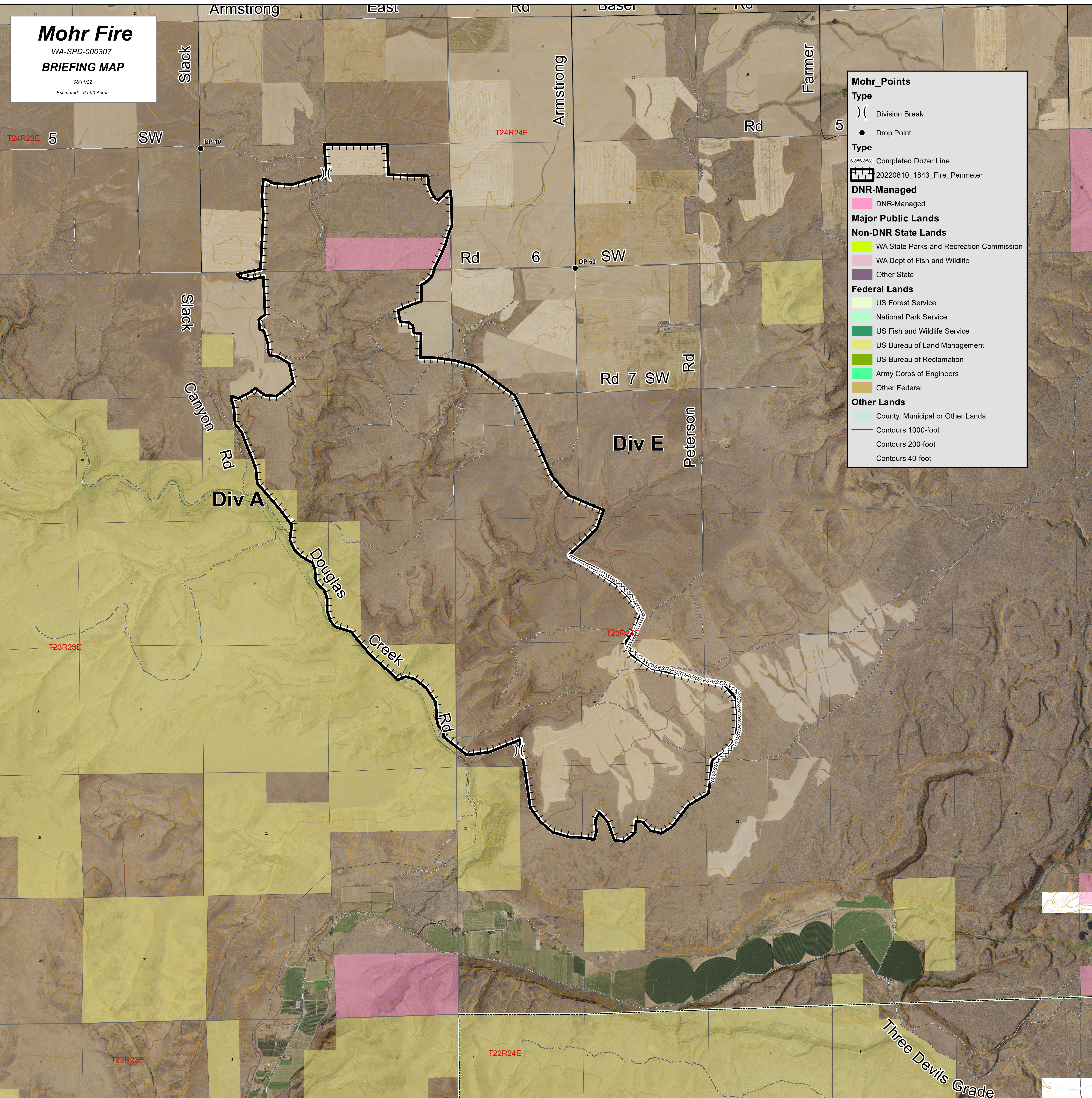
Mohr Fire

WA-SPD-000307

BRIEFING MAP

08/11/22

Estimated: 6,500 Acres



Mohr_Points

Type

-) (Division Break
- Drop Point

Type

- Completed Dozer Line
- 20220810_1843_Fire_Perimeter

DNR-Managed

- DNR-Managed

Major Public Lands

Non-DNR State Lands

- WA State Parks and Recreation Commission
- WA Dept of Fish and Wildlife
- Other State

Federal Lands

- US Forest Service
- National Park Service
- US Fish and Wildlife Service
- US Bureau of Land Management
- US Bureau of Reclamation
- Army Corps of Engineers
- Other Federal

Other Lands

- County, Municipal or Other Lands
- Contours 1000-foot
- Contours 200-foot
- Contours 40-foot