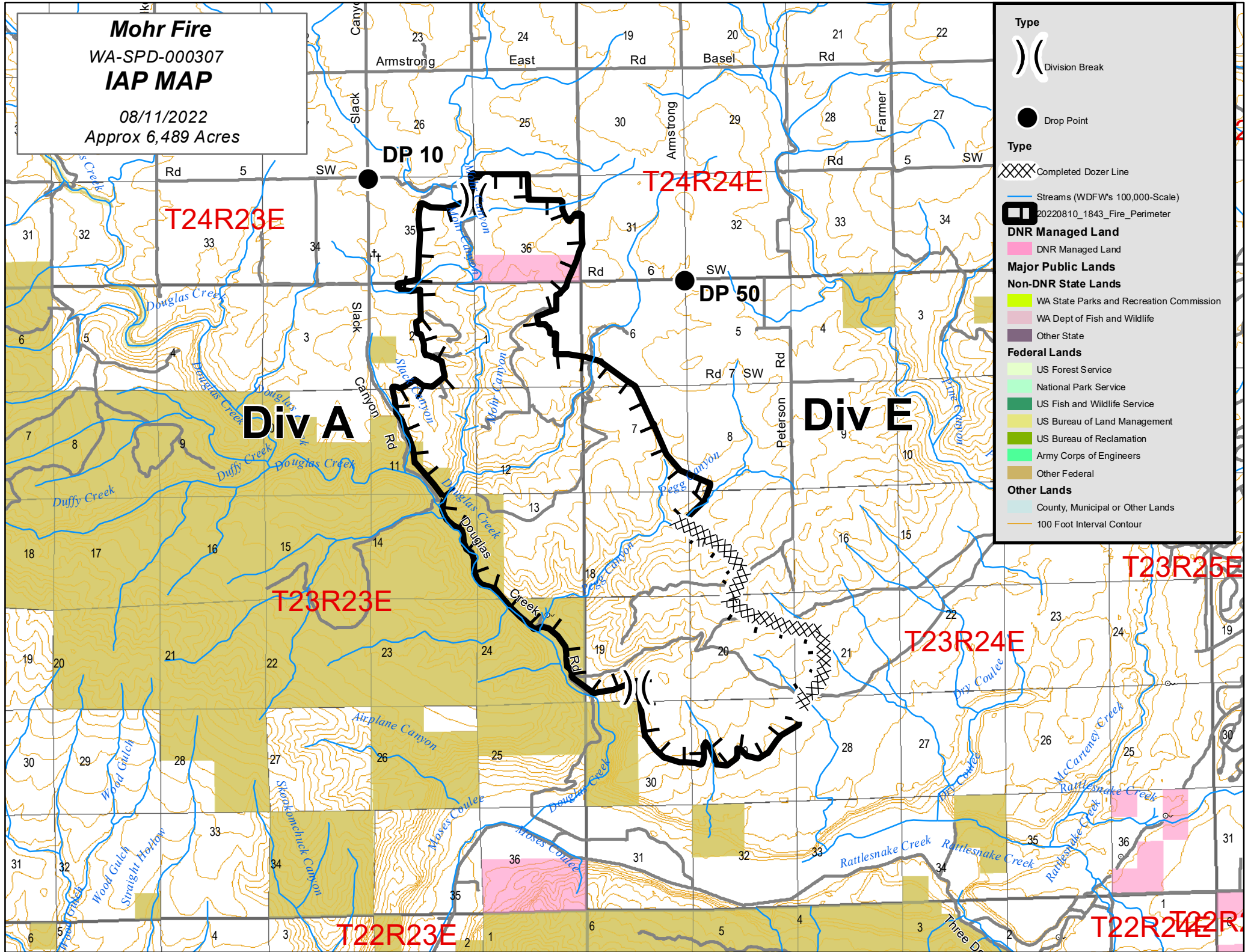


**Mohr Fire**  
WA-SPD-000307  
**IAP MAP**

08/11/2022  
Approx 6,489 Acres



**Type**

- ( ) Division Break
- Drop Point

**Type**

- XXXXX Completed Dozer Line
- Streams (WDFW's 100,000-Scale)
- ▭ 20220810\_1843\_Fire\_Perimeter

**DNR Managed Land**

- DNR Managed Land

**Major Public Lands**

**Non-DNR State Lands**

- WA State Parks and Recreation Commission
- WA Dept of Fish and Wildlife
- Other State

**Federal Lands**

- US Forest Service
- National Park Service
- US Fish and Wildlife Service
- US Bureau of Land Management
- US Bureau of Reclamation
- Army Corps of Engineers
- Other Federal

**Other Lands**

- County, Municipal or Other Lands
- 100 Foot Interval Contour