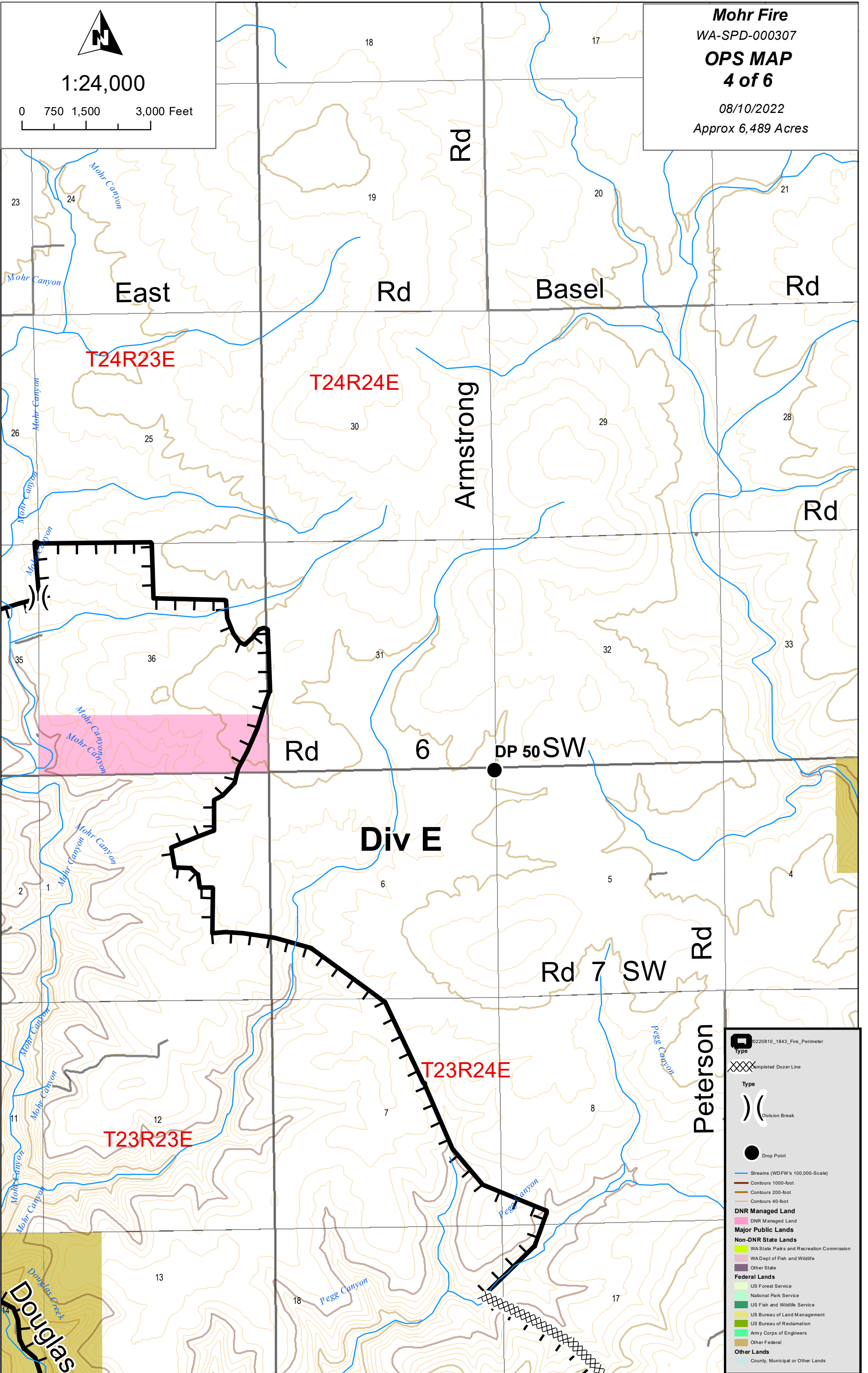




1:24,000

0 750 1,500 3,000 Feet

**Mohr Fire**  
WA-SPD-000307  
**OPS MAP**  
**4 of 6**  
08/10/2022  
Approx 6,489 Acres



0220810\_1843\_Fire\_Perimeter

Type

- Completed Dozer Line
- Division Break
- Drop Point

Streams (WDFW's 100,000-Scale)

- Contours 1000-foot
- Contours 200-foot
- Contours 40-foot

**DNR Managed Land**

- DNR Managed Land

**Major Public Lands**

**Non-DNR State Lands**

- WA State Parks and Recreation Commission
- WA Dept of Fish and Wildlife
- Other State

**Federal Lands**

- US Forest Service
- National Park Service
- US Fish and Wildlife Service
- US Bureau of Land Management
- US Bureau of Reclamation
- Army Corps of Engineers
- Other Federal

**Other Lands**

- County, Municipal or Other Lands