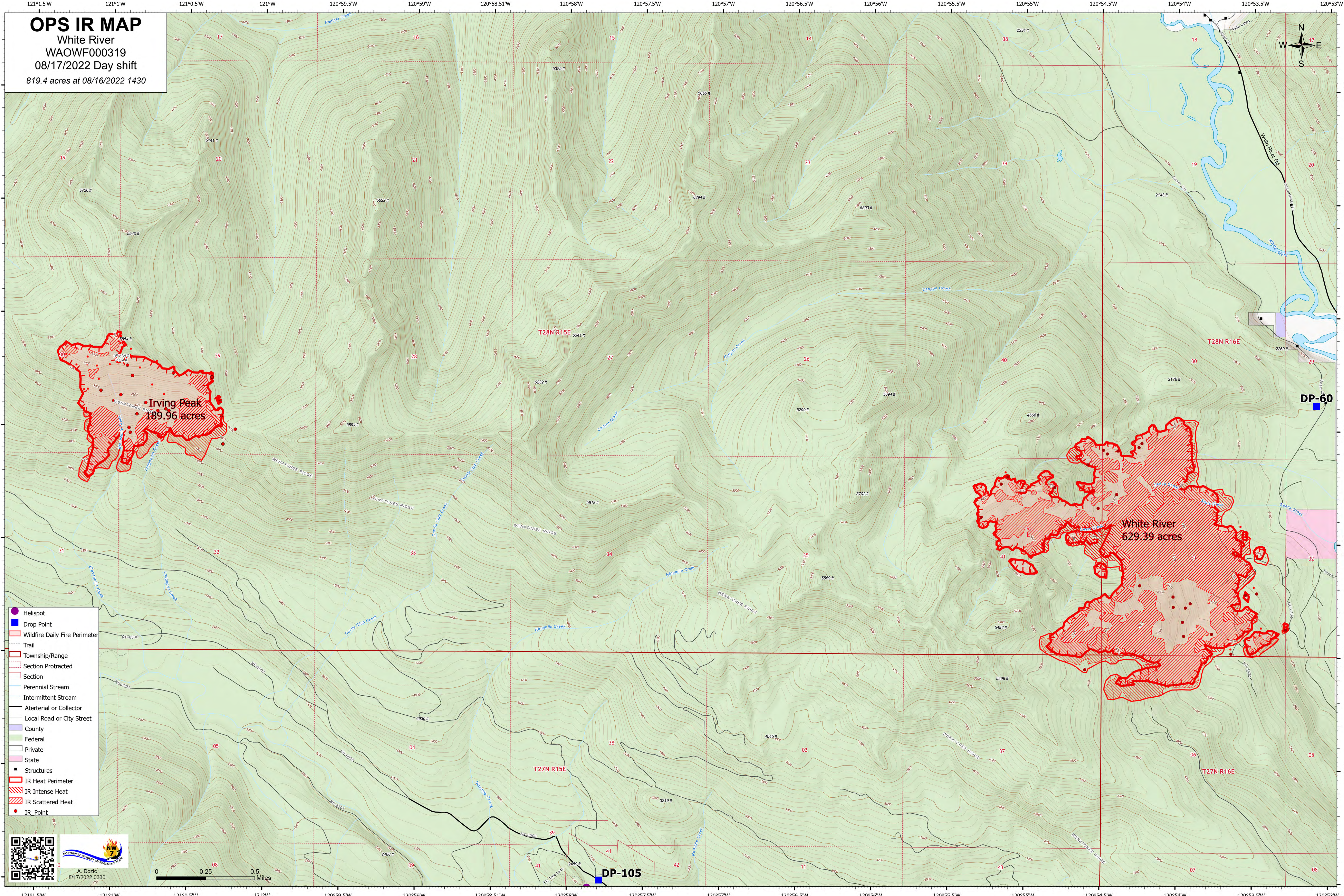
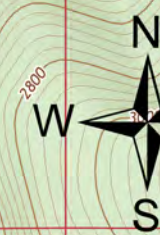


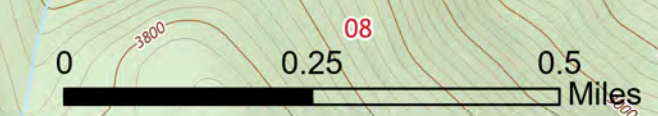
OPS IR MAP

White River
WAOWF000319
08/17/2022 Day shift
819.4 acres at 08/16/2022 1430



- Helispot
- Drop Point
- ▭ Wildfire Daily Fire Perimeter
- ⋯ Trail
- ▭ Township/Range
- ▭ Section Protracted
- ▭ Section
- Perennial Stream
- Intermittent Stream
- Arterial or Collector
- Local Road or City Street
- ▭ County
- ▭ Federal
- ▭ Private
- ▭ State
- Structures
- ▭ IR Heat Perimeter
- ▭ IR Intense Heat
- ▭ IR Scattered Heat
- IR Point

A. Dozic
8/17/2022 0330



DP-105

DP-60

Irving Peak
189.96 acres

White River
629.39 acres