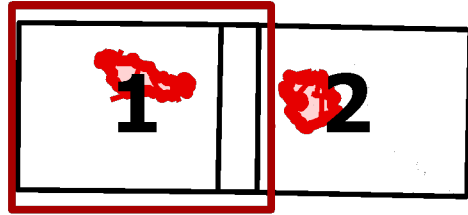


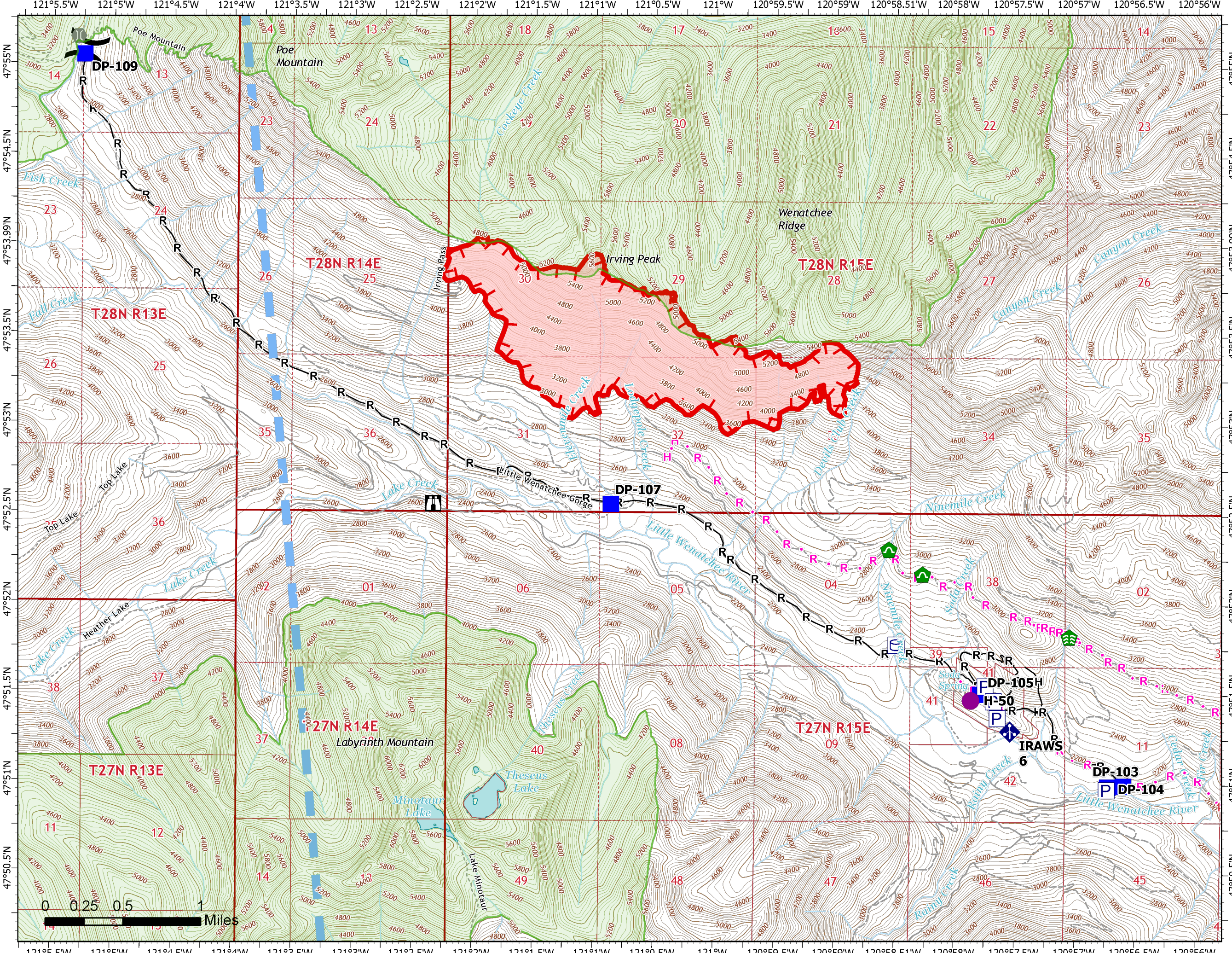
IAP MAP

White River
WAOWF000319
08/22/2022

1,905 acres at 08/21/2022 1230
Page 1 of 2

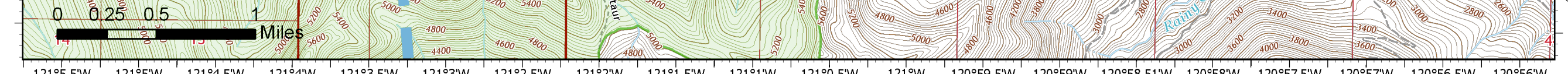


- Helispot
- ⌘ Division Break
- Drop Point
- 🏠 Lookout
- 🌉 Bridge
- 🌿 Stream Crossing
- 🏠 Culvert
- 📶 Mobile Weather Unit
- 🔴 Wildfire Daily Fire Perimeter
- 📦 Pump
- 🚰 Water Tank
- Completed Hand Line
- Completed Road as Line
- Planned Hand Line
- Planned Road as Line
- 🚫 Temporary Flight Restriction
- 🔴 Uncontained
- 🏠 Structures
- Local Road
- 4WD
- Trail
- 🌊 Perennial Stream
- 🌊 Intermittent Stream
- 🌊 Perennial Lake
- 🌿 Wilderness



North arrow pointing North (N), South (S), East (E), and West (W).

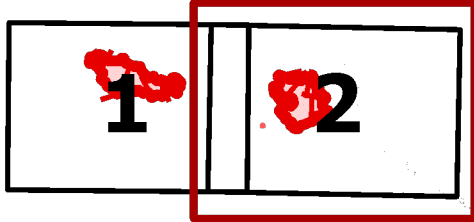
2022-08-21 2059



IAP MAP

White River
WAOWF000319
08/22/2022

1,905 acres at 08/21/2022 1230
Page 2 of 2



- Helispot
- ⌵ Division Break
- Drop Point
- ⊕ Gate
- 🏠 Water Development or Draft Site
- 🌿 Stream Crossing
- 🔧 Repair Point
- 🚧 Culvert
- 📶 Mobile Weather Unit
- ⚠ Hazard
- 🌊 Water Source
- 🔥 Wildfire Daily Fire Perimeter
- Ⓜ Pump
- 🛢 Water Tank
- Completed Hand Line
- Completed Mixed Construction Line
- Completed Road as Line
- Planned Hand Line
- Planned Road as Line
- Access or Improved Road
- Other
- 🔴 Uncontained
- 🏠 Structures
- Local Connector
- Local Road
- 4WD
- Trail
- Perennial Stream
- Intermittent Stream
- 🌊 Perennial Lake
- 🌿 Wilderness



2022-08-21 2059

