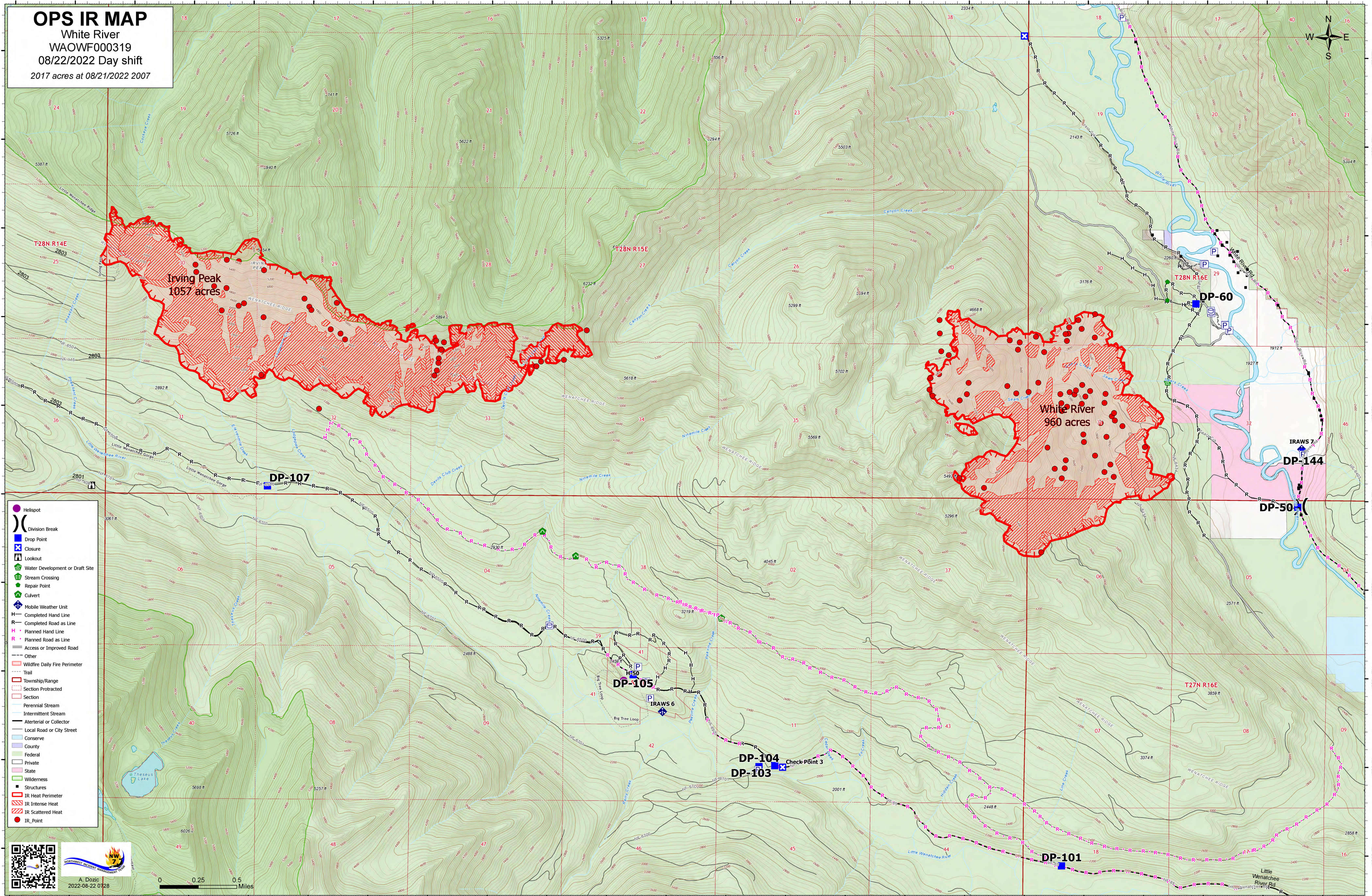


OPS IR MAP

White River
WAOWF000319
08/22/2022 Day shift
2017 acres at 08/21/2022 2007



- Helispot
- () Division Break
- Drop Point
- ⊠ Closure
- ⊠ Lookout
- ⊠ Water Development or Draft Site
- ⊠ Stream Crossing
- ⊠ Repair Point
- ⊠ Culvert
- ⊠ Mobile Weather Unit
- H Completed Hand Line
- R Completed Road as Line
- H Planned Hand Line
- R Planned Road as Line
- Access or Improved Road
- Other
- Trail
- Wildfire Daily Fire Perimeter
- Township/Range
- Section Protracted
- Section
- Perennial Stream
- Intermittent Stream
- Arterial or Collector
- Local Road or City Street
- Conserve
- County
- Federal
- Private
- State
- Wilderness
- Structures
- IR Heat Perimeter
- IR Intense Heat
- IR Scattered Heat
- IR_Point



A. Dozie
2022-08-22 0728



121°3'W 121°2.5'W 121°2'W 121°1.5'W 121°1'W 121°0.5'W 121°W 120°59.5'W 120°59'W 120°58.5'W 120°58'W 120°57.5'W 120°57'W 120°56.5'W 120°56'W 120°55.5'W 120°55'W 120°54.5'W 120°54'W 120°53.5'W 120°53'W 120°52.5'W 120°52'W

47°50.5'N 47°51'N 47°51.5'N 47°52'N 47°52.5'N 47°53'N 47°53.5'N 47°54'N 47°54.5'N 47°55'N