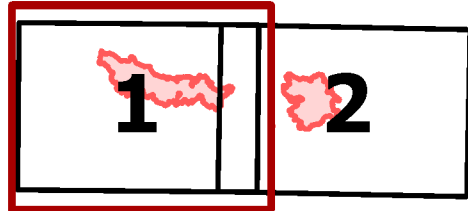


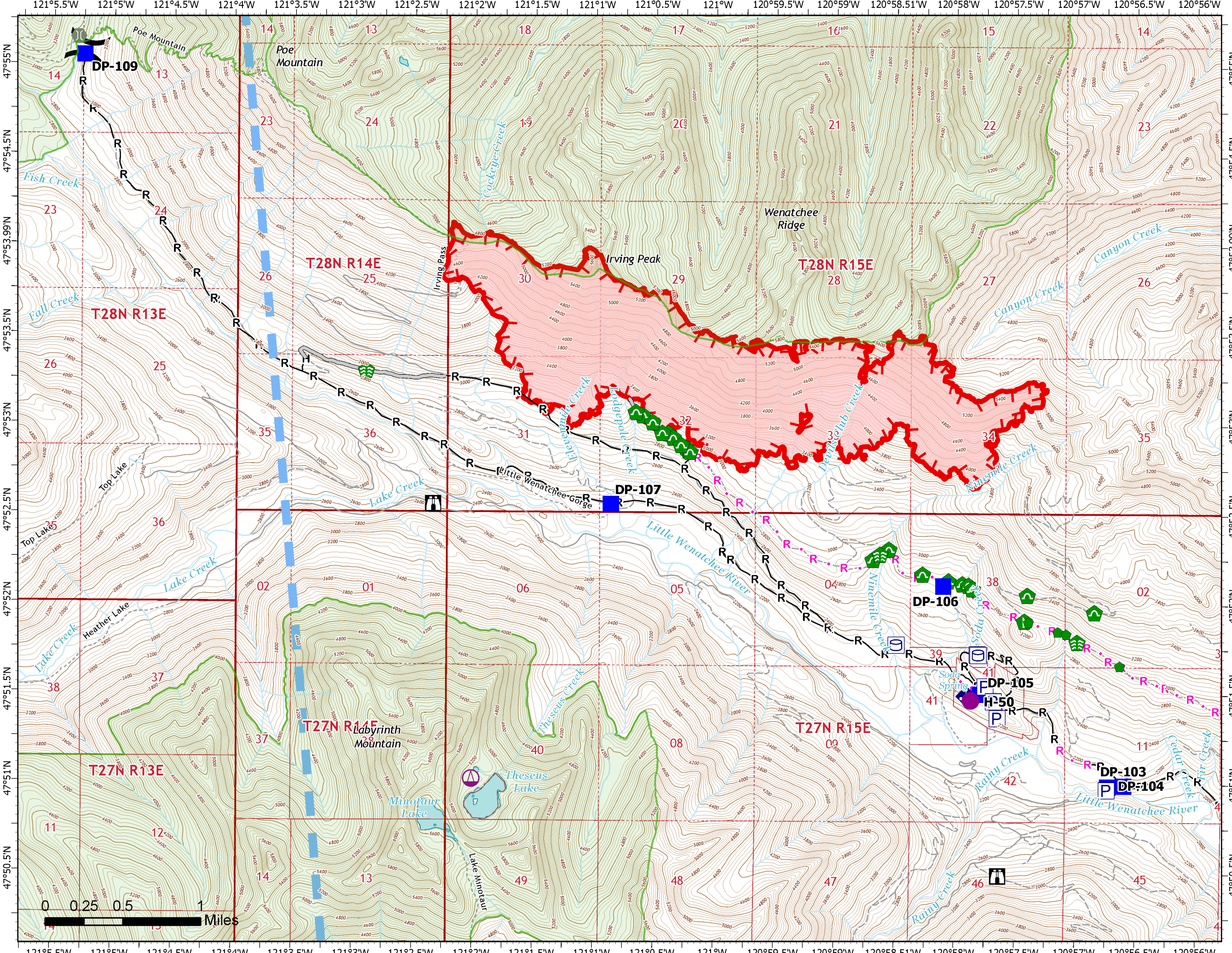
IAP MAP

White River
WAOWF000319
08/29/2022

2,666 acres at 08/27/2022 2251
Page 1 of 2

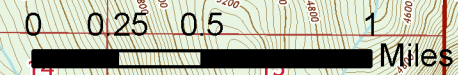


- Helispot
- ⚡ Sling Site
- X Division Break
- Drop Point
- 🏠 Lookout
- 🌉 Bridge
- 🌿 Stream Crossing
- 🛠 Repair Point
- 🚧 Dozer Push
- 🌿 Culvert
- 📶 Mobile Weather Unit
- 🔥 Wildfire Daily Fire Perimeter
- 📦 Pump
- 🚰 Water Tank
- H— Completed Hand Line
- R— Completed Road as Line
- H— Planned Hand Line
- R— Planned Road as Line
- Access or Improved Road
- 🚫 Temporary Flight Restriction
- 🏠 Structures
- Local Road
- 4WD
- Trail
- 🌊 Perennial Stream
- 🌊 Intermittent Stream
- 🌊 Perennial Lake
- 🌿 Wilderness



North arrow pointing North (N), South (S), East (E), and West (W).

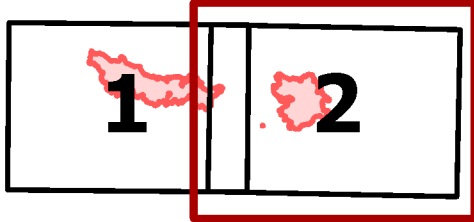
2022-08-28 2038



IAP MAP

White River
WAOWF000319
08/29/2022

2,666 acres at 08/27/2022 2251
Page 2 of 2



- Helispot
- ⌘ Division Break
- Drop Point
- 🏠 Lookout
- ⚙ Gate
- 🌉 Bridge
- 🏗 Water Development or Draft Site
- 🌳 Stream Crossing
- 🛠 Road Repair
- 👷 Repair Point
- 🚧 Dozer Push
- 🚧 Culvert
- 📶 Mobile Weather Unit
- 📶 Repeater
- ⚠ Hazard
- 🌊 Water Source
- 🔥 Wildfire Daily Fire Perimeter
- 📦 Pump
- 🛢 Water Tank
- H— Completed Hand Line
- M— Completed Mixed Construction Line
- R— Completed Road as Line
- H— Planned Hand Line
- R— Planned Road as Line
- Access or Improved Road
- Other
- 🏠 Uncontained Structures
- Local Connector
- Local Road
- 4WD
- Trail
- 🌊 Perennial Stream
- 🌊 Intermittent Stream
- 🌊 Perennial Lake
- 🌲 Wilderness



2022-08-28 2038

