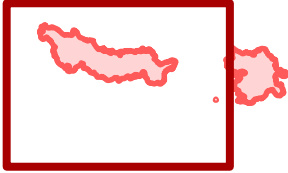


# Air Ops

White River  
WA-OWF-000319  
1,089 acres

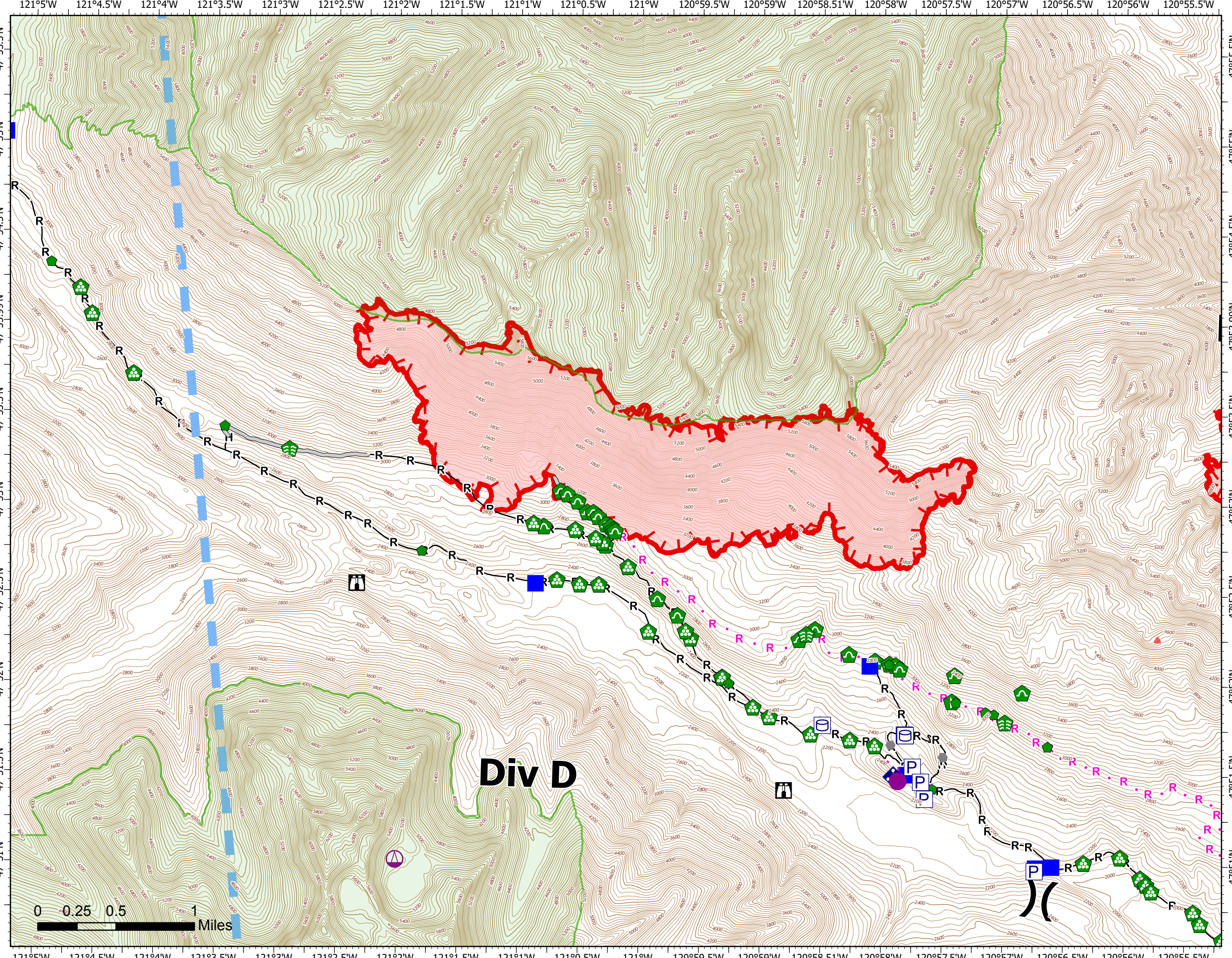
Irving Peak  
WA-OWF-000318  
1,829 acres



Page 1 of 2

Acres as of 08/30/2022 2043  
Map updated 8/31/2022 2136

- |                                |                        |
|--------------------------------|------------------------|
| ● Helispot                     | ■ Structures           |
| ⊙ Sling Site                   | — Expressway           |
| ⋈ Division Break               | — Secondary Hwy        |
| ■ Drop Point                   | — Local Connector      |
| ⊠ Lookout                      | — Local Road           |
| ● Other                        | — Ramp                 |
| ⊙ Bridge                       | — 4WD                  |
| ⊙ Stream Crossing              | — Ferry                |
| ⊙ Repair Point                 | — Tunnel               |
| ⊙ Landing or Log Deck          | — Trail                |
| ⊙ Dozer Push                   | — Pipeline             |
| ⊙ Culvert                      | — Perennial Stream     |
| ⊙ Mobile Weather Unit          | — Canal/Ditch          |
| ⊙ Pump                         | — Coastline            |
| ⊙ Water Tank                   | — Underground Conduit  |
| H— Completed Hand Line         | — Underground Pipeline |
| R— Completed Road as Line      | — Intermittent Stream  |
| H— Planned Hand Line           | — Perennial Lake       |
| R— Planned Road as Line        | — Nonearthen Reservoir |
| — Access or Improved Road      | — Estuary              |
| — Temporary Flight Restriction | — Wilderness           |
| — Uncontained                  |                        |



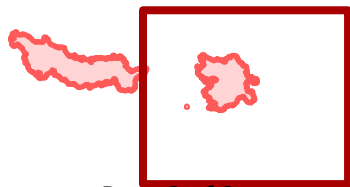
## Div D



# Air Ops

White River  
WA-OWF-000319  
1,089 acres

Irving Peak  
WA-OWF-000318  
1,829 acres



Page 2 of 2

Acres as of 08/30/2022 2043  
Map updated 8/31/2022 2136

- (X) Division Break
- Drop Point
- 🏠 Lookout
- Other
- ⚡ Gate
- 🌉 Bridge
- 🏠 Water Development or Draft Site
- 🌿 Stream Crossing
- 🛠 Road Repair
- 🛠 Repair Point
- 🏠 Landing or Log Deck
- 🛠 Dozer Push
- 🛠 Culvert
- 📡 Mobile Weather Unit
- 📡 Repeater
- ⚠ Hazard
- 🌊 Water Source
- 📡 Pump
- 📡 Water Tank
- H Completed Hand Line
- M Completed Mixed Construction Line
- R Completed Road as Line
- H Planned Hand Line
- R Planned Road as Line
- Access or Improved Road

