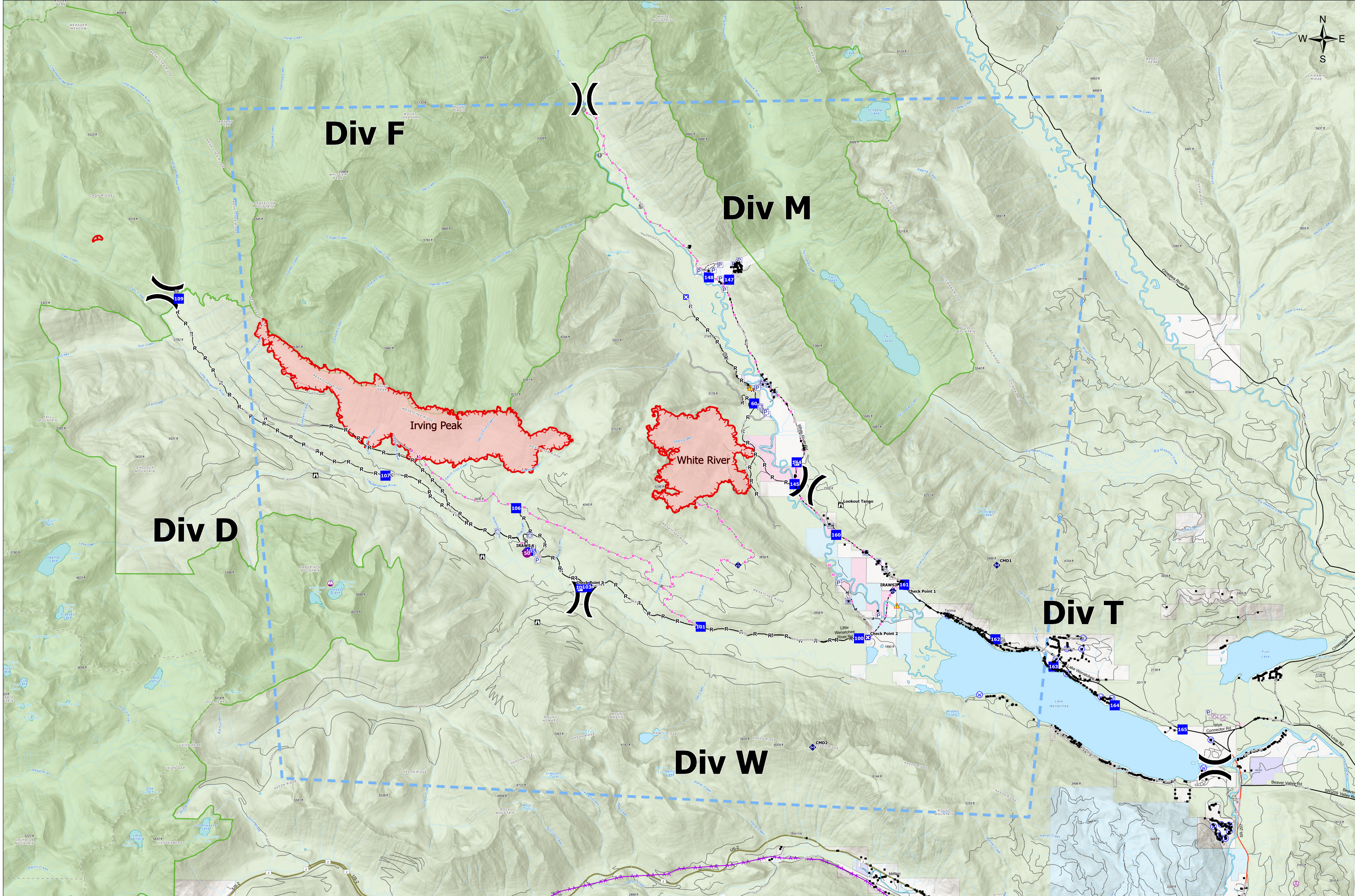


Briefing



White River
 WA-OWF-000319
 1,165 acres
 09/01/2022 Day
 Acres as of: 08/31/2022 2226
 Map Created: 9/1/2022 0627

Irving Peak
 WA-OWF-000318
 2,240 acres

- | | | | | | |
|-----------------------|-----------------------|-------------------------------------|--------------------------------|-----------------------------|------------------------|
| ⊗ Aerial Hazard | ⊠ Closure | ⬇ Repeater | — Planned Road as Line | — Interstate or US Highway | — Nonearthen Shore |
| ⊗ Airstrip or Airport | ⊠ Lookout | ⚠ Hazard | — Access or Improved Road | — Major Arterial Collector | — Perennial Lake |
| ⊗ Helispot | ⊠ Value at Risk | ⊗ Water Source | — Other | — Aterterial or Collector | — Nonearthen Reservoir |
| ⊗ Helibase | ⊠ Other | — Completed Hand Line | ⊗ Aerial Hazard | — Local Road or City Street | ⬛ Structures |
| ⊗ Sling Site | ⊠ Gate | — Completed Mixed Construction Line | — Temporary Flight Restriction | — Perennial Stream | — Conserve |
| ⊗ Division Break | ⊠ Bridge | — Completed Road as Line | — Contained | — Canal/Ditch | — County |
| ■ Drop Point | ⬇ Mobile Weather Unit | — Planned Hand Line | — Uncontained | — Intermittent Stream | — Federal |

