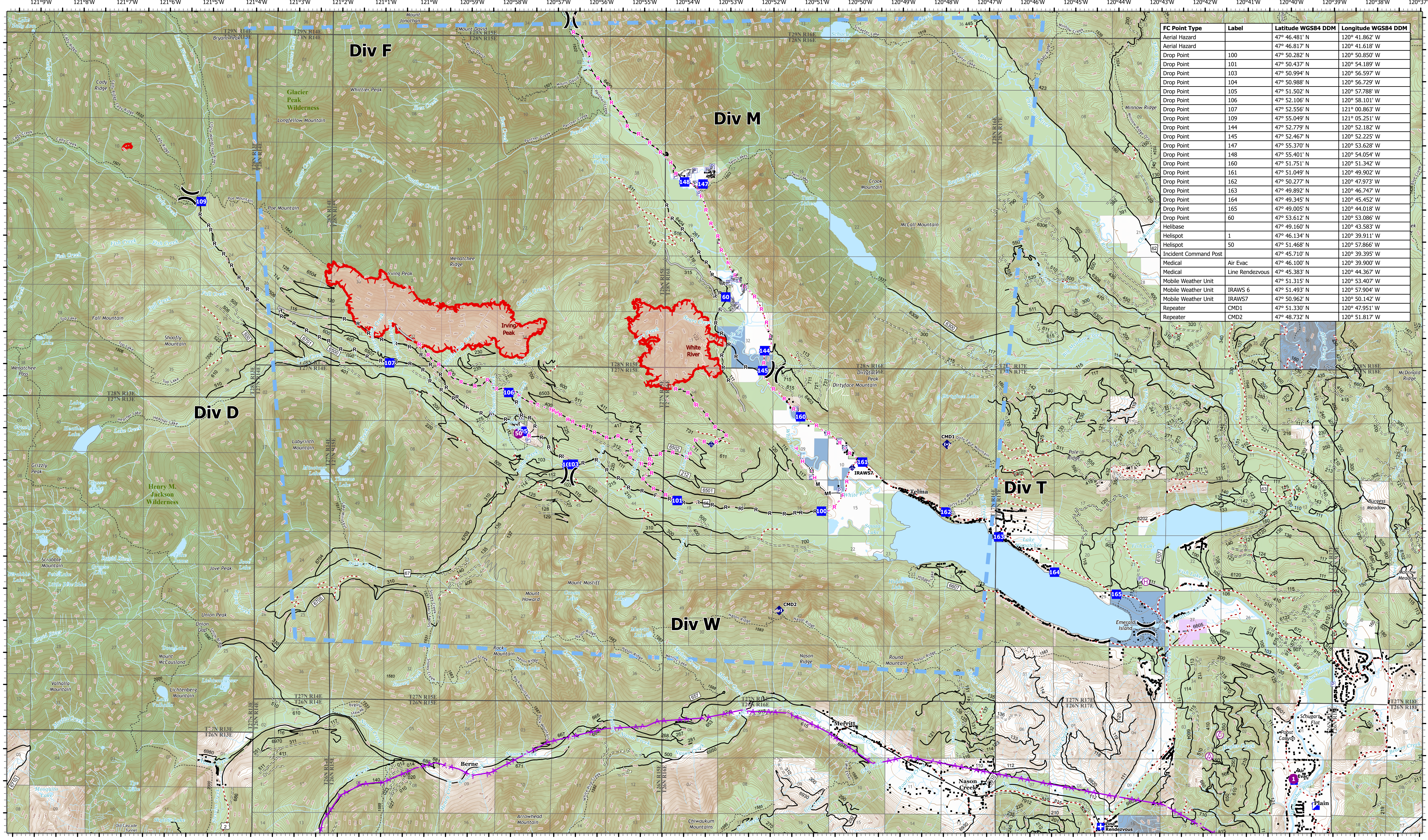


Communications



FC Point Type	Label	Latitude WGS84 DDM	Longitude WGS84 DDM
Aerial Hazard		47° 46.481' N	120° 41.862' W
Aerial Hazard		47° 46.817' N	120° 41.618' W
Drop Point	100	47° 50.282' N	120° 50.850' W
Drop Point	101	47° 50.437' N	120° 54.189' W
Drop Point	103	47° 50.994' N	120° 56.597' W
Drop Point	104	47° 50.988' N	120° 56.729' W
Drop Point	105	47° 51.502' N	120° 57.788' W
Drop Point	106	47° 52.106' N	120° 58.101' W
Drop Point	107	47° 52.556' N	121° 00.863' W
Drop Point	109	47° 55.049' N	121° 05.251' W
Drop Point	144	47° 52.779' N	120° 52.182' W
Drop Point	145	47° 52.467' N	120° 52.225' W
Drop Point	147	47° 55.370' N	120° 53.628' W
Drop Point	148	47° 55.401' N	120° 54.054' W
Drop Point	160	47° 51.751' N	120° 51.342' W
Drop Point	161	47° 51.049' N	120° 49.902' W
Drop Point	162	47° 50.277' N	120° 47.973' W
Drop Point	163	47° 49.892' N	120° 46.747' W
Drop Point	164	47° 49.345' N	120° 45.452' W
Drop Point	165	47° 49.005' N	120° 44.018' W
Drop Point	60	47° 53.612' N	120° 53.086' W
Helibase		47° 49.160' N	120° 43.583' W
Helispot	1	47° 46.134' N	120° 39.911' W
Helispot	50	47° 51.468' N	120° 57.866' W
Incident Command Post		47° 45.710' N	120° 39.395' W
Medical	Air Evac	47° 46.100' N	120° 39.900' W
Medical	Line Rendezvous	47° 45.383' N	120° 44.367' W
Mobile Weather Unit		47° 51.315' N	120° 53.407' W
Mobile Weather Unit	IRAWS 6	47° 51.493' N	120° 57.904' W
Mobile Weather Unit	IRAWS7	47° 50.962' N	120° 50.142' W
Repeater	CMD1	47° 51.330' N	120° 47.951' W
Repeater	CMD2	47° 48.732' N	120° 51.817' W

White River
WA-OWF-000319
1,089 acres

Irving Peak
WA-OWF-000315
1,829 acres

09/01/2022 Day
Acres as of 08/30/2022 2043
Map Updated: 8/31/2022 9:27 PM

- Aerial Hazard
- Drop Point
- Completed Hand Line
- Access or Improved Road
- Wilderness
- Helispot
- ◆ Mobile Weather Unit
- Completed Mixed Construction Line
- Other
- Local Government
- Helibase
- ◆ Repeater
- Completed Road as Line
- Aerial Hazard
- Private
- Medical
- Pump
- Planned Hand Line
- Temporary Flight Restriction
- State
- Incident Command Post
- Water Tank
- Planned Road as Line
- Wildfire Daily Fire Perimeter
- U.S. Forest Service

N
W — E
S

0 0.25 0.5 1 1.5 Miles