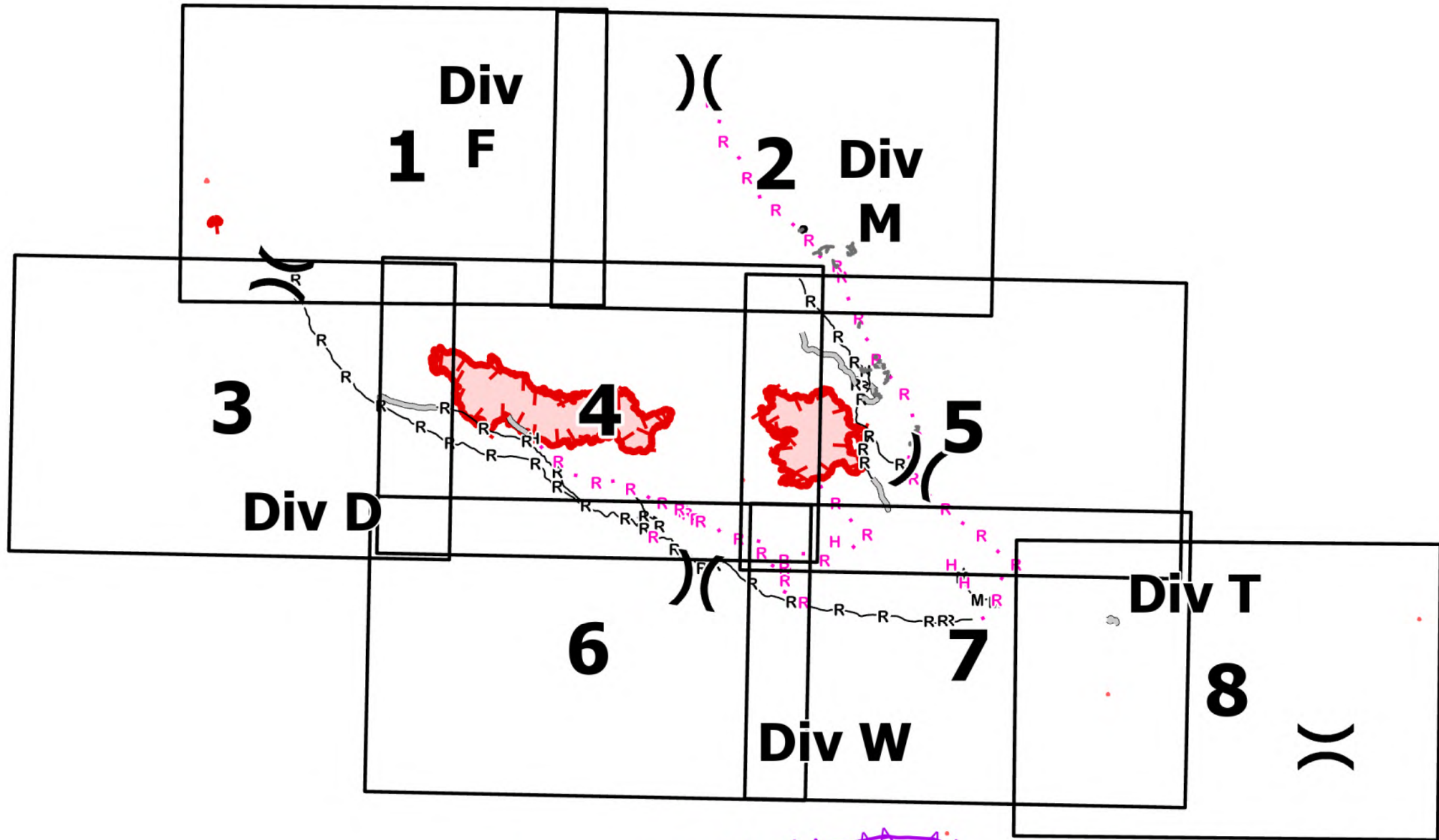


**IAP**  
 9/1/2022  
 White River  
 WA-OWF-000319  
 1,089 Acres

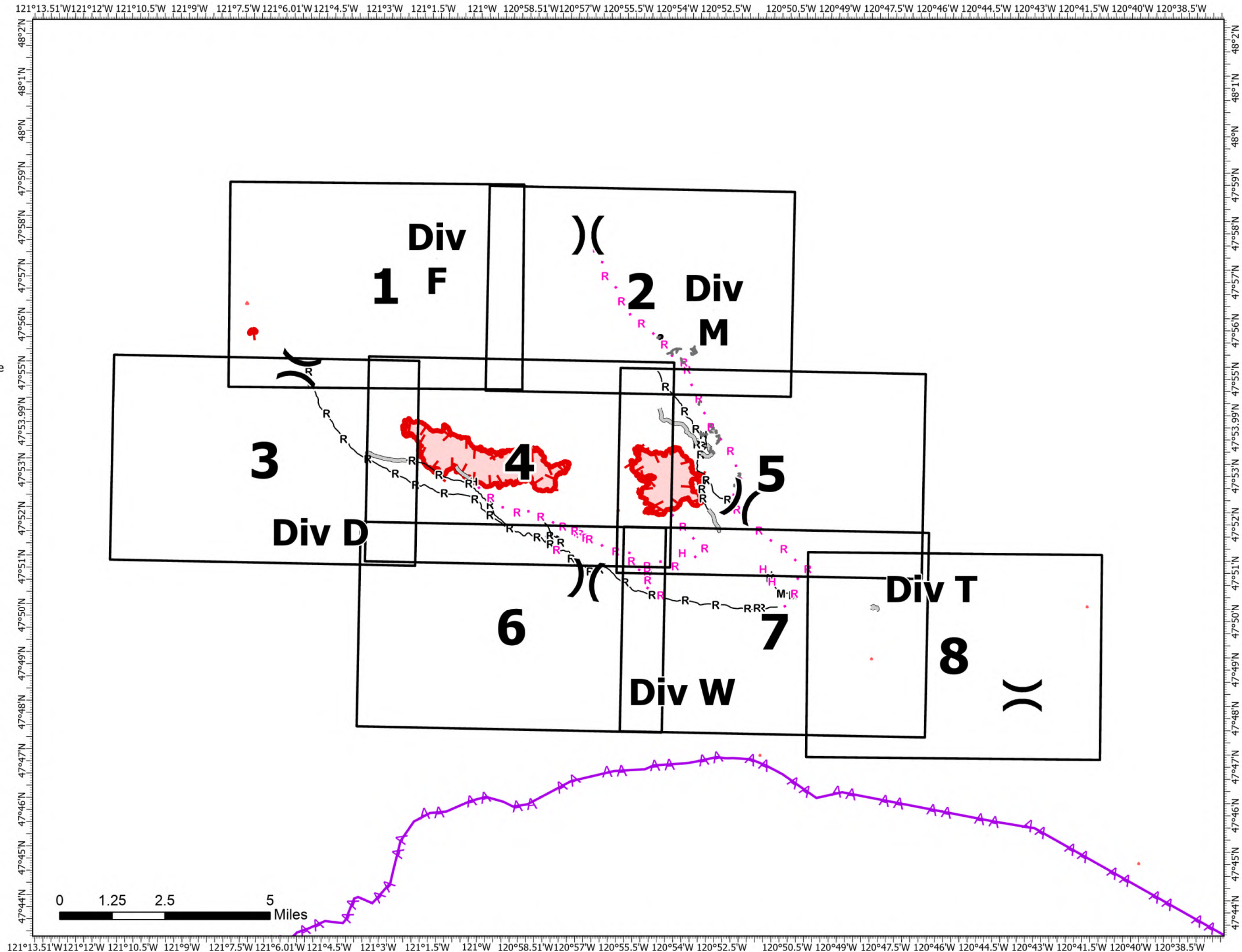
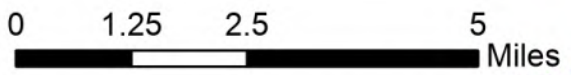
Irving Peak  
 WA-OWF-000318  
 1,829 Acres

*Acres as of: 08/30/2022 2043*

- ( Division Break
- H Completed Hand Line
- M Completed Mixed Construction Line
- R Completed Road as Line
- H Planned Hand Line
- R Planned Road as Line
- Access or Improved Road
- Other
- AA Aerial Hazard
- ▬ Contained
- ▬ Uncontained



Map Updated:  
 8/31/2022 @ 2123  
 North American 1983 Datum. LatLong Grid

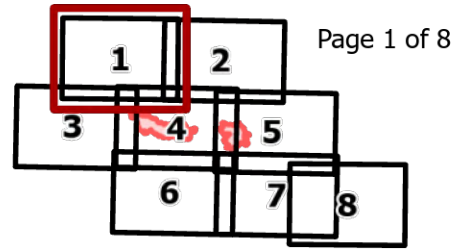




White River  
WA-OWF-000319  
1,089 Acres

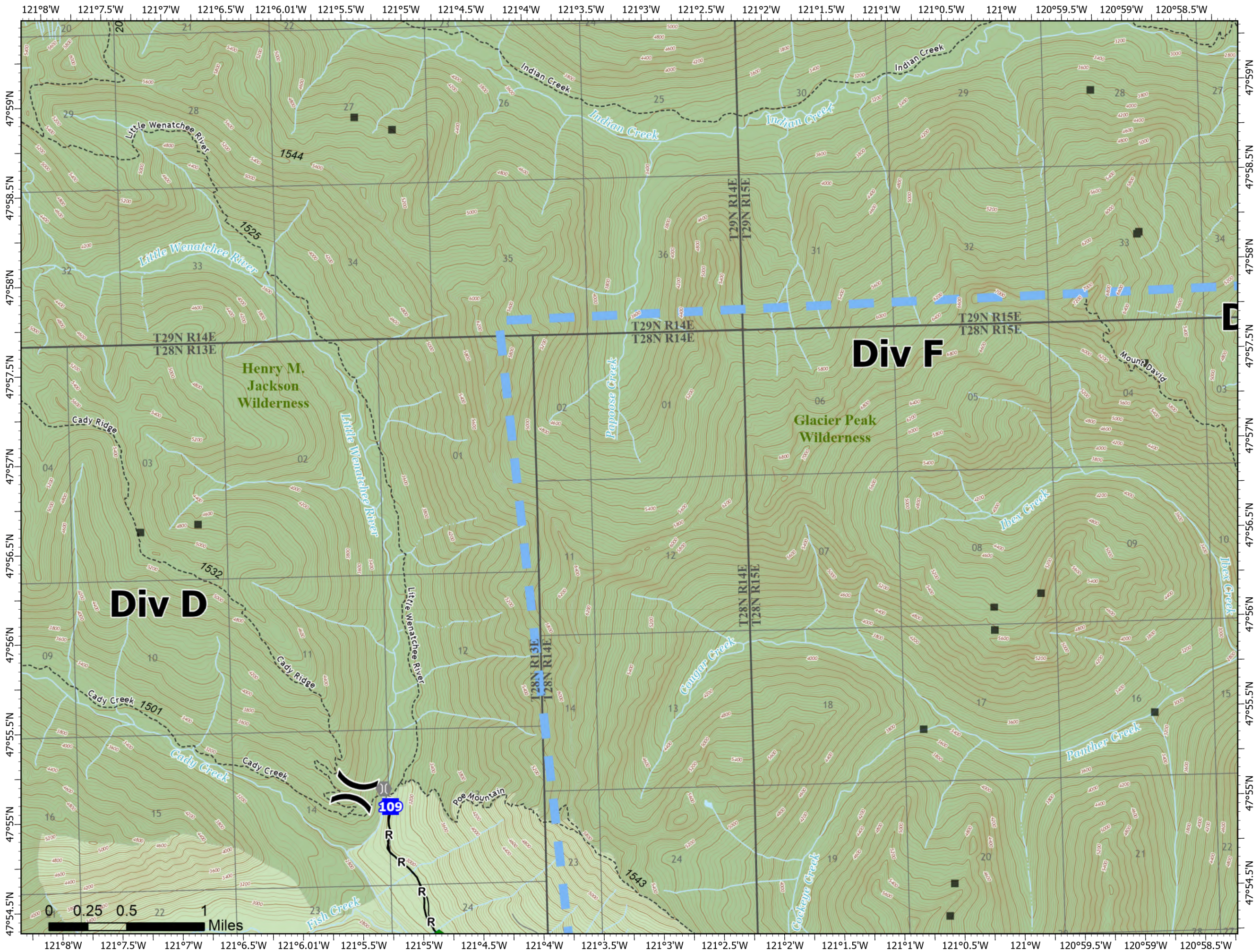
Irving Peak  
WA-OWF-000318  
1,829 Acres

Acres as of: 08/30/2022 2043



Page 1 of 8

- Division Break
- Drop Point
- Bridge
- Repair Point
- Completed Road as Line
- Temporary Flight Restriction
- Structures
- Open Roads
- Other Roads
- Trail
- Wilderness
- U.S. Forest Service

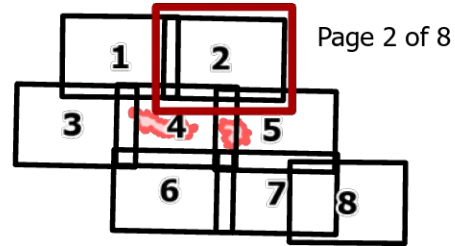




White River  
WA-OWF-000319  
1,089 Acres

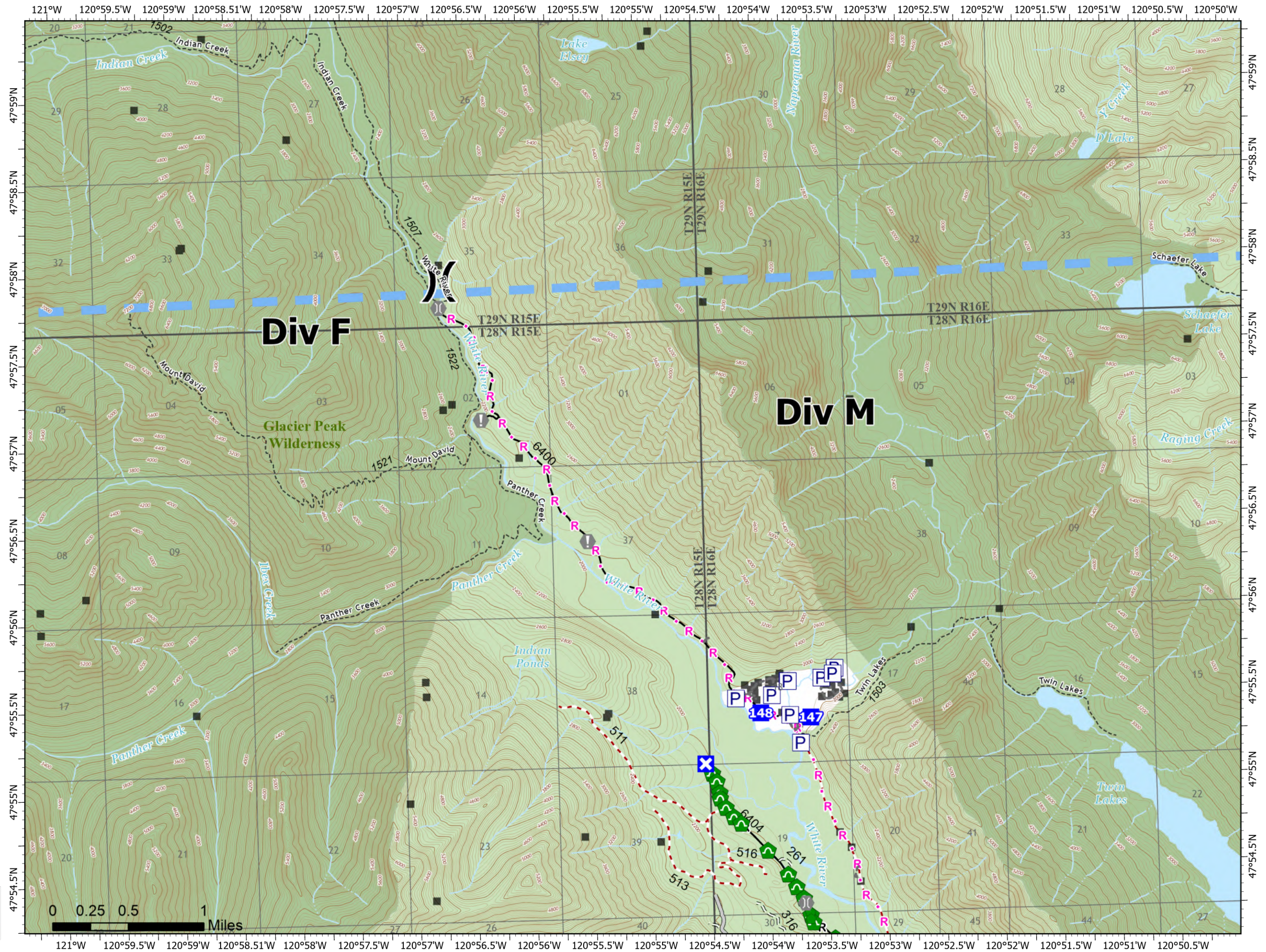
Irving Peak  
WA-OWF-000318  
1,829 Acres

Acres as of: 08/30/2022 2043



Page 2 of 8

- Pump
- Division Break
- Drop Point
- Closure
- Value at Risk
- Bridge
- Repair Point
- Culvert
- Completed Road as Line
- Planned Road as Line
- Access or Improved Road
- Other
- Temporary Flight Restriction
- Structures
- Open Roads
- Closed Roads
- Decommissioned Roads
- Trail
- Wilderness
- Private
- U.S. Forest Service



Div F

Div M

Glacier Peak  
Wilderness

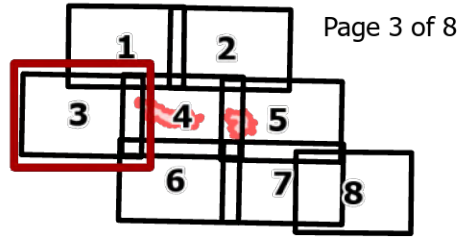




White River  
WA-OWF-000319  
1,089 Acres

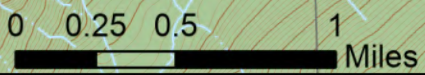
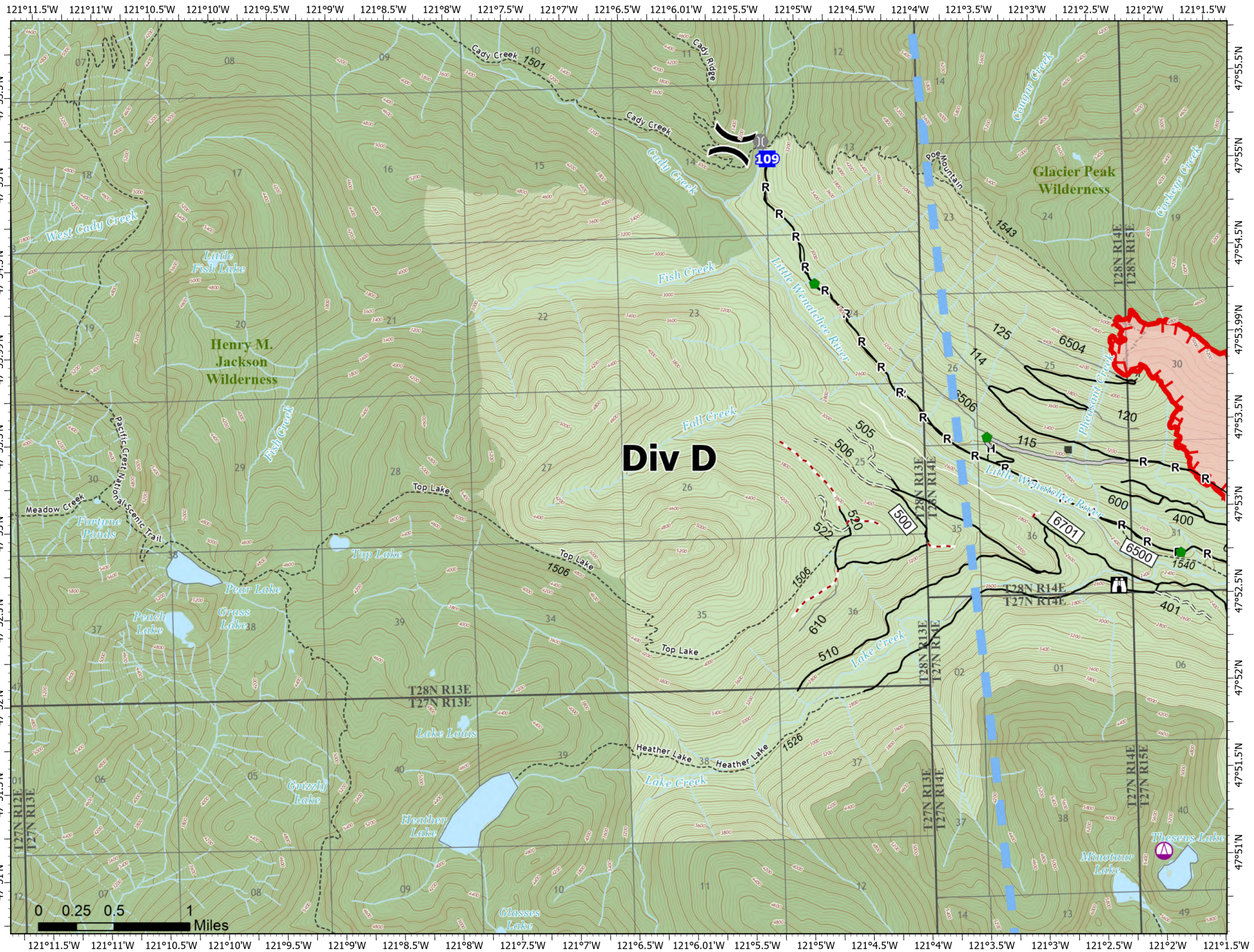
Irving Peak  
WA-OWF-000318  
1,829 Acres

Acres as of: 08/30/2022 2043



Page 3 of 8

- Sling Site
- Division Break
- Drop Point
- Lookout
- Bridge
- Repair Point
- Completed Hand Line
- Completed Road as Line
- Access or Improved Road
- Temporary Flight Restriction
- Uncontained
- Structures
- Open Roads
- Closed Roads
- Decommissioned Roads
- Other Roads
- Trail
- Wilderness
- U.S. Forest Service

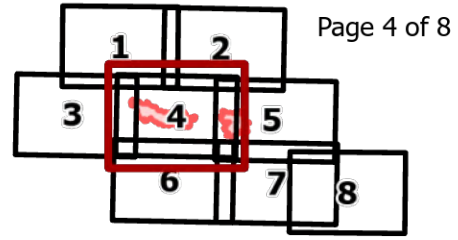




White River  
WA-OWF-000319  
1,089 Acres

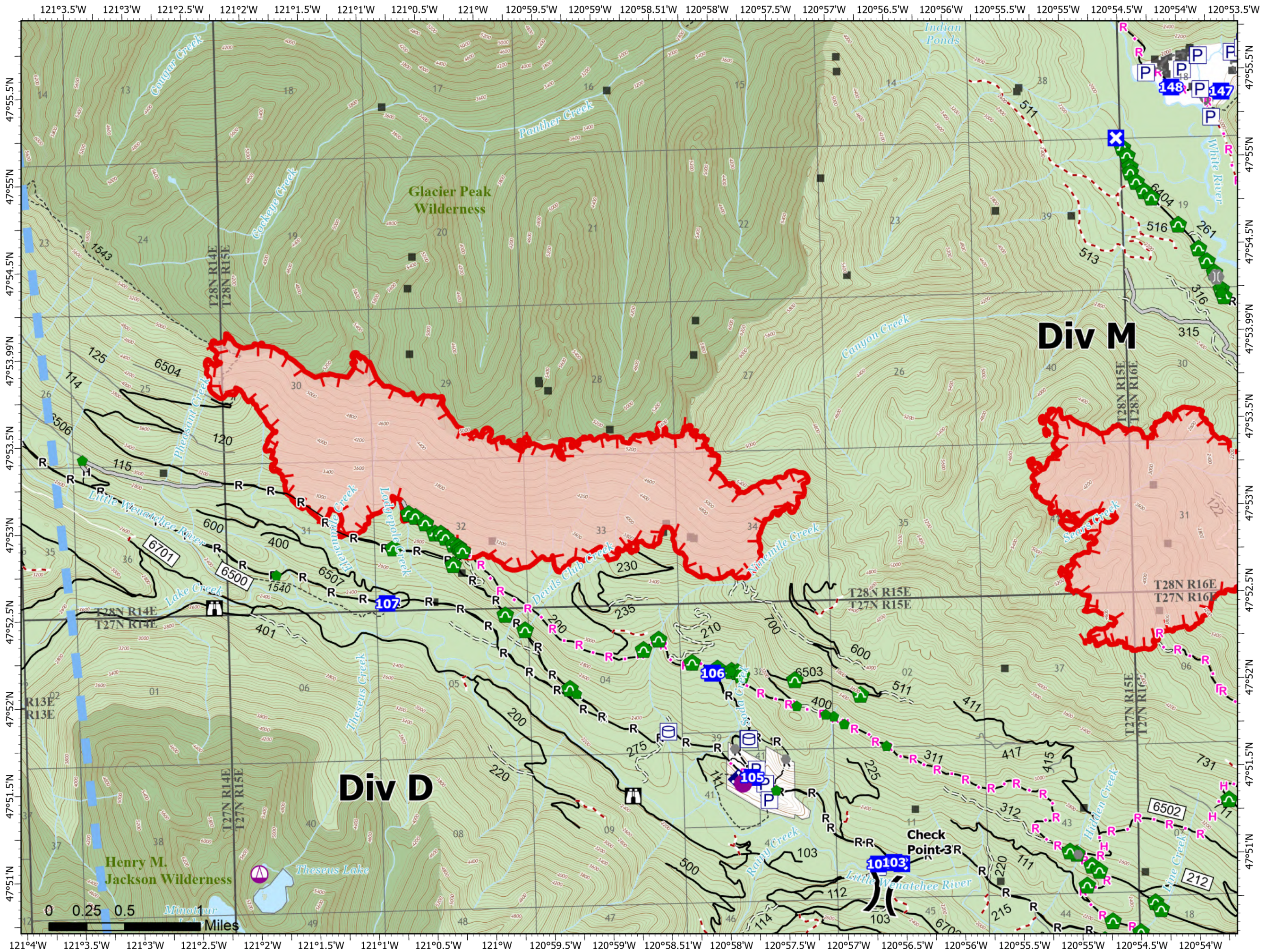
Irving Peak  
WA-OWF-000318  
1,829 Acres

Acres as of: 08/30/2022 2043



Page 4 of 8

- Pump
- Water Tank
- Helispot
- Sling Site
- Division Break
- Drop Point
- Closure
- Lookout
- Other
- Bridge
- Repair Point
- Culvert
- Mobile Weather Unit
- Completed Hand Line
- Completed Road as Line
- Planned Hand Line
- Planned Road as Line
- Access or Improved Road
- Other
- Temporary Flight Restriction
- Uncontained
- Structures
- Open Roads
- Closed Roads
- Decommissioned Roads
- Other Roads
- Trail
- Wilderness
- Private
- U.S. Forest Service

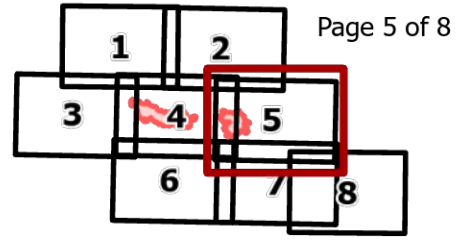




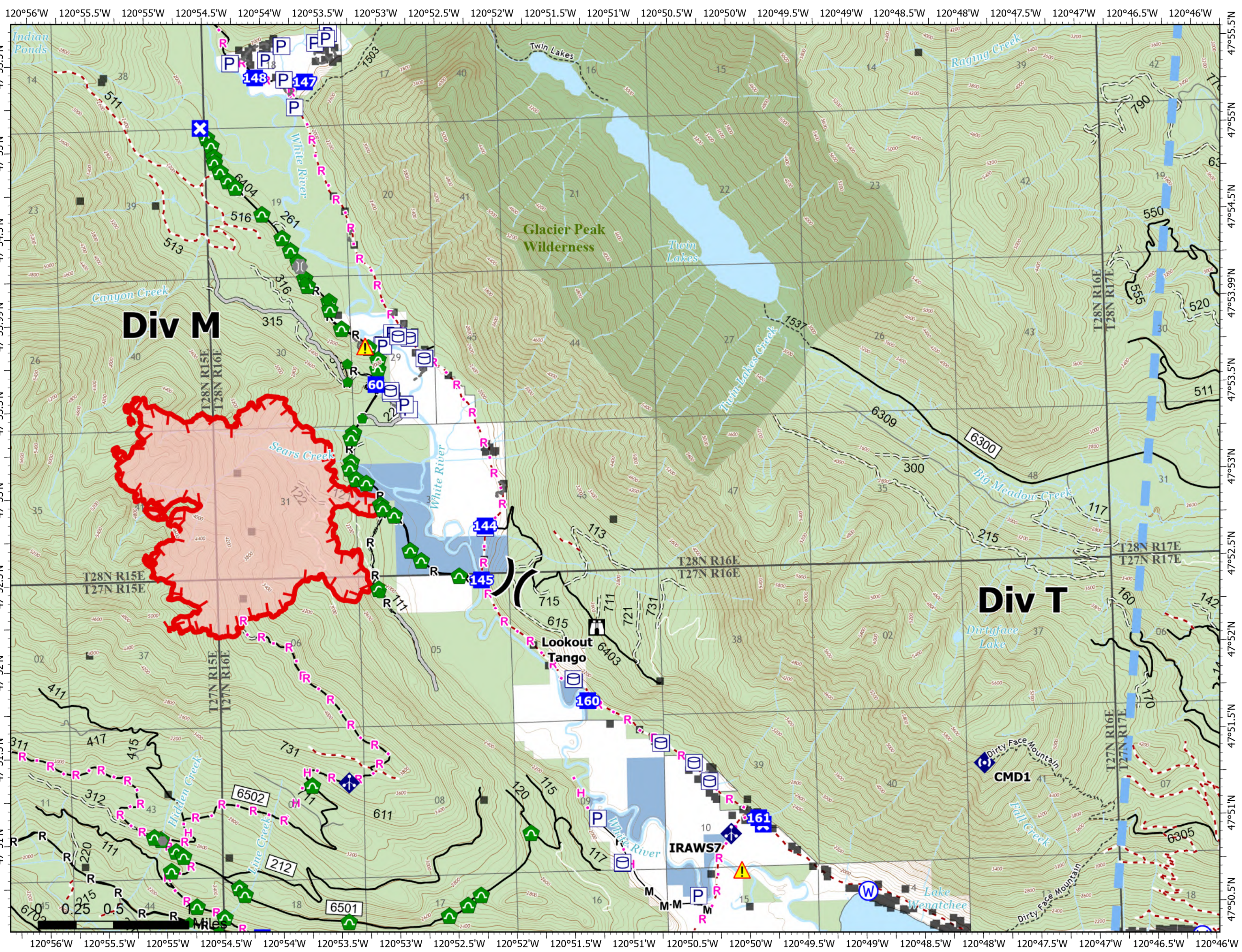
White River  
WA-OWF-000319  
1,089 Acres

Irving Peak  
WA-OWF-000318  
1,829 Acres

Acres as of: 08/30/2022 2043



- Pump
- Water Tank
- Division Break
- Drop Point
- Closure
- Lookout
- Other
- Gate
- Bridge
- Repair Point
- Culvert
- Mobile Weather Unit
- Repeater
- Hazard
- Water Source
- Completed Hand Line
- Completed Mixed Construction Line
- Completed Road as Line
- Planned Hand Line
- Planned Road as Line
- Access or Improved Road
- Other
- Temporary Flight Restriction
- Uncontained
- Structures
- Open Roads
- Closed Roads
- Decommissioned Roads
- Other Roads
- Trail
- Wilderness
- Private
- State
- U.S. Forest Service



8/31/2022 2232

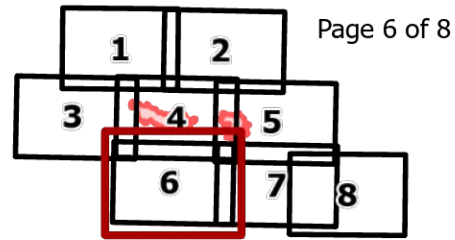




White River  
WA-OWF-000319  
1,089 Acres

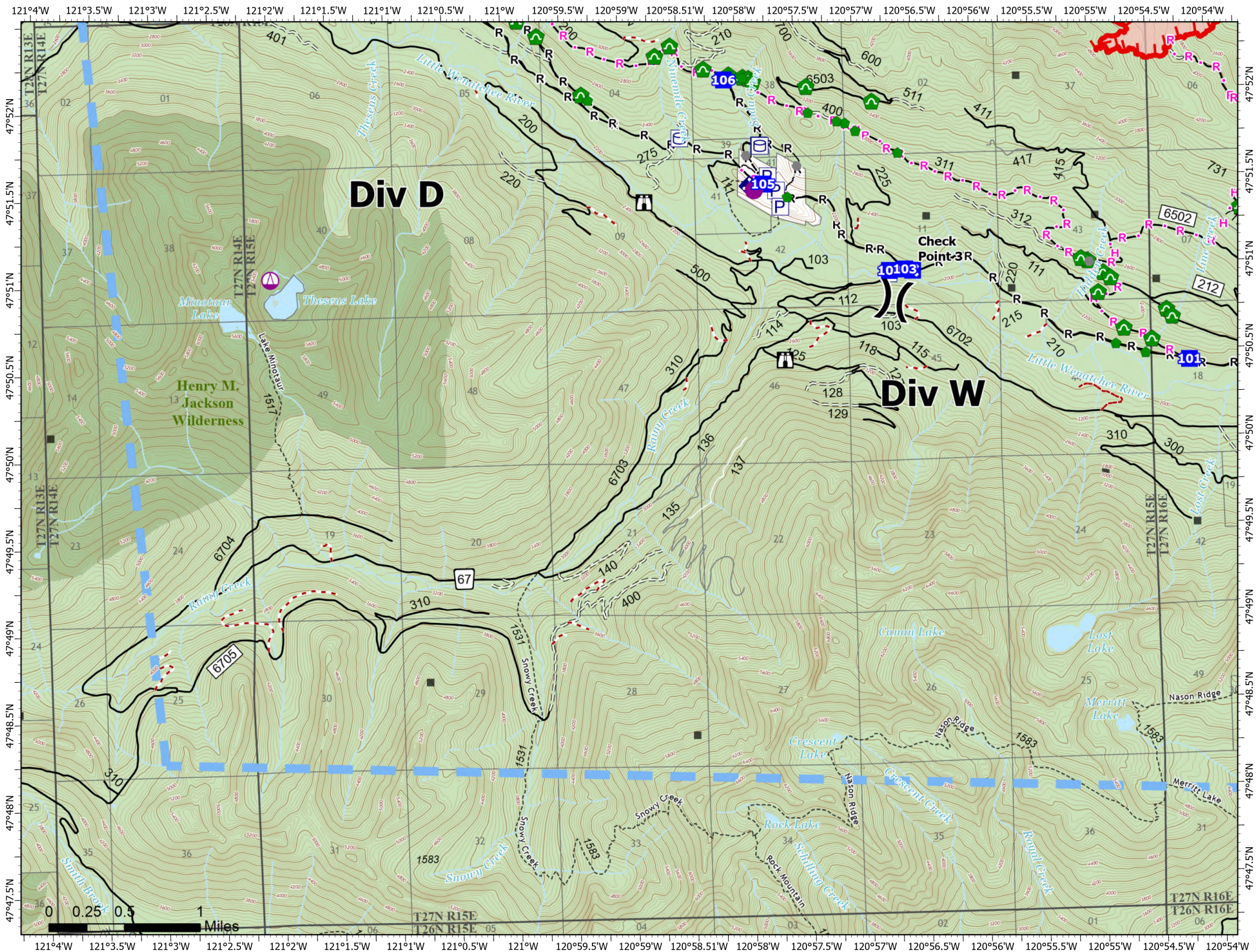
Irving Peak  
WA-OWF-000318  
1,829 Acres

Acres as of: 08/30/2022 2043



Page 6 of 8

- Pump
- Water Tank
- Helispot
- Sling Site
- Division Break
- Drop Point
- Closure
- Lookout
- Other
- Repair Point
- Culvert
- Mobile Weather Unit
- Completed Hand Line
- Completed Road as Line
- Planned Hand Line
- Planned Road as Line
- Temporary Flight Restriction
- Uncontained
- Structures
- Open Roads
- Closed Roads
- Decommissioned Roads
- Other Roads
- Trail
- Wilderness
- Private
- U.S. Forest Service

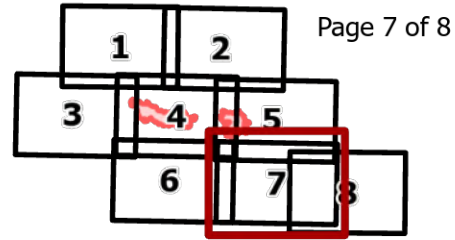




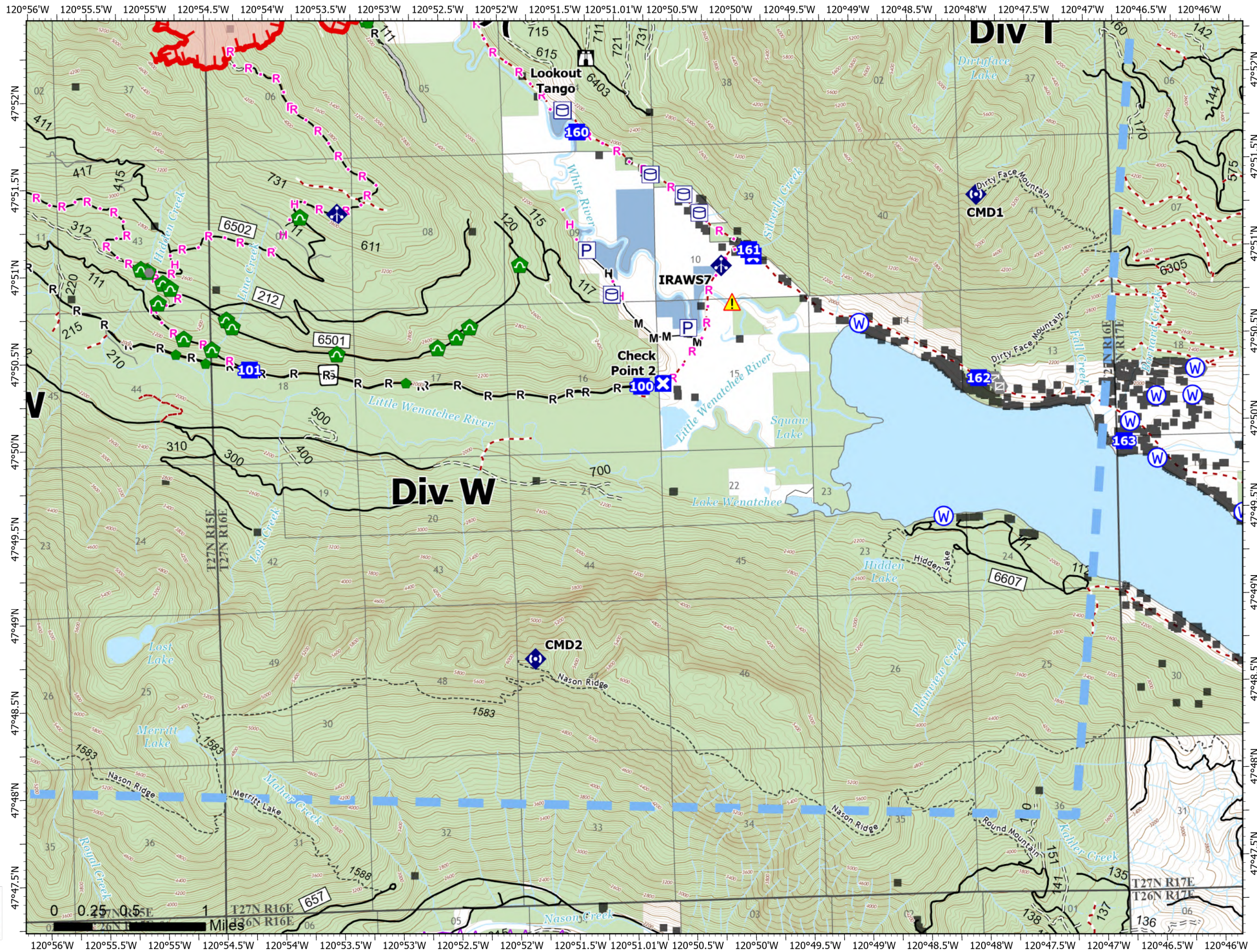
White River  
WA-OWF-000319  
1,089 Acres

Irving Peak  
WA-OWF-000318  
1,829 Acres

Acres as of: 08/30/2022 2043



- Pump
- Water Tank
- Division Break
- Drop Point
- Closure
- Lookout
- Other
- Gate
- Repair Point
- Culvert
- Mobile Weather Unit
- Repeater
- Hazard
- Water Source
- Completed Hand Line
- Completed Mixed Construction Line
- Completed Road as Line
- Planned Hand Line
- Planned Road as Line
- Access or Improved Road
- Aerial Hazard
- Temporary Flight Restriction
- Uncontained
- Structures
- Open Roads
- Closed Roads
- Decommissioned Roads
- Other Roads
- Trail
- Private
- State
- U.S. Forest Service

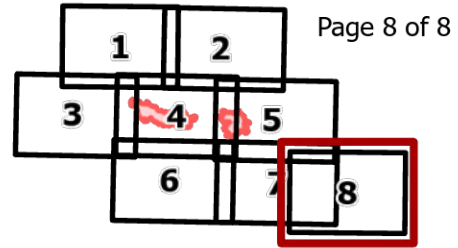




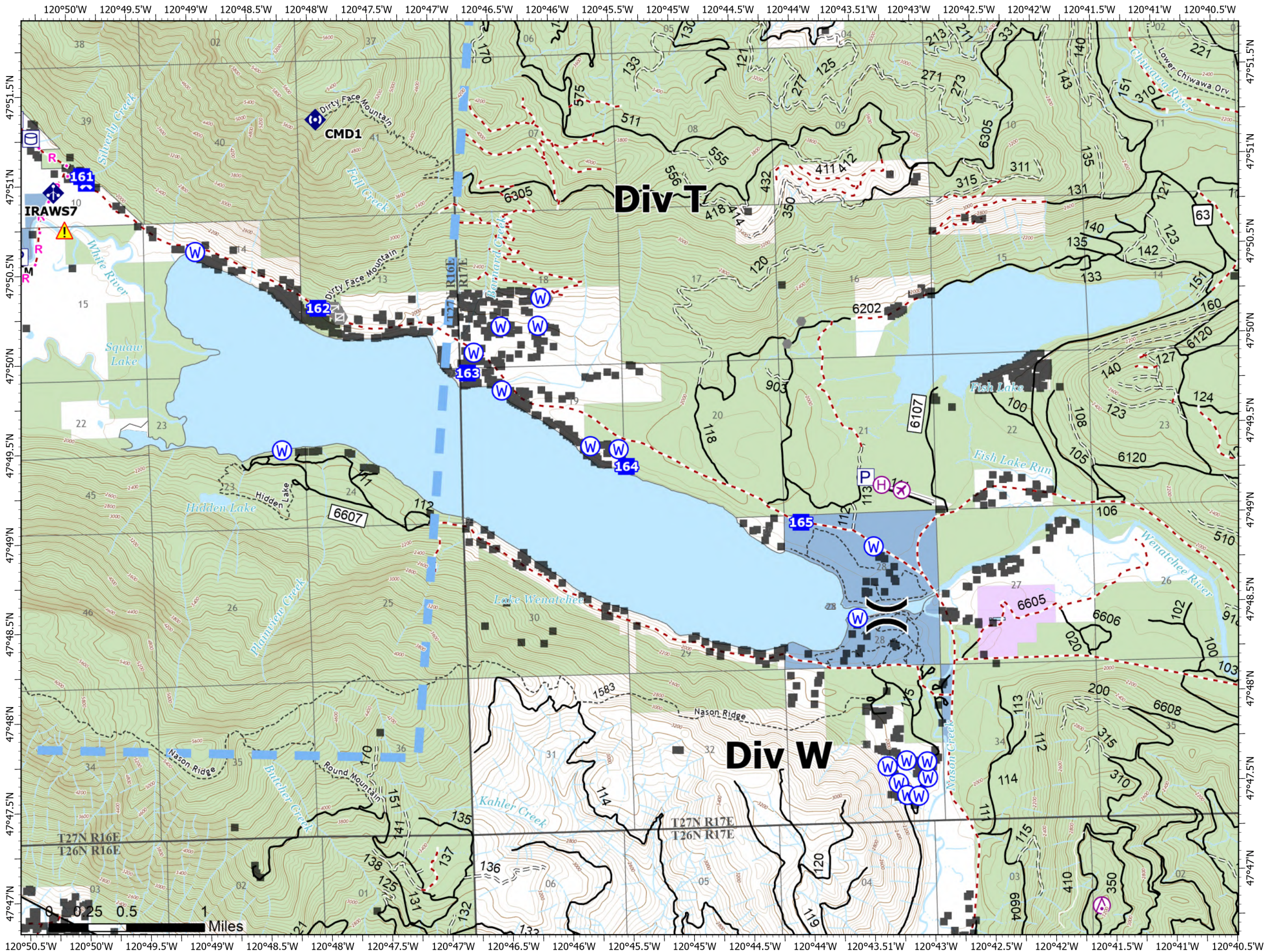
White River  
WA-OWF-000319  
1,089 Acres

Irving Peak  
WA-OWF-000318  
1,829 Acres

Acres as of: 08/30/2022 2043



- Pump
- Water Tank
- Aerial Hazard
- Airstrip or Airport
- Helibase
- Division Break
- Drop Point
- Closure
- Other
- Gate
- Mobile Weather Unit
- Repeater
- Hazard
- Water Source
- Completed Mixed Construction Line
- Planned Road as Line
- Access or Improved Road
- Aerial Hazard
- Temporary Flight Restriction
- Structures
- Open Roads
- Closed Roads
- Decommissioned Roads
- Trail
- Local Government
- Private
- State
- U.S. Forest Service



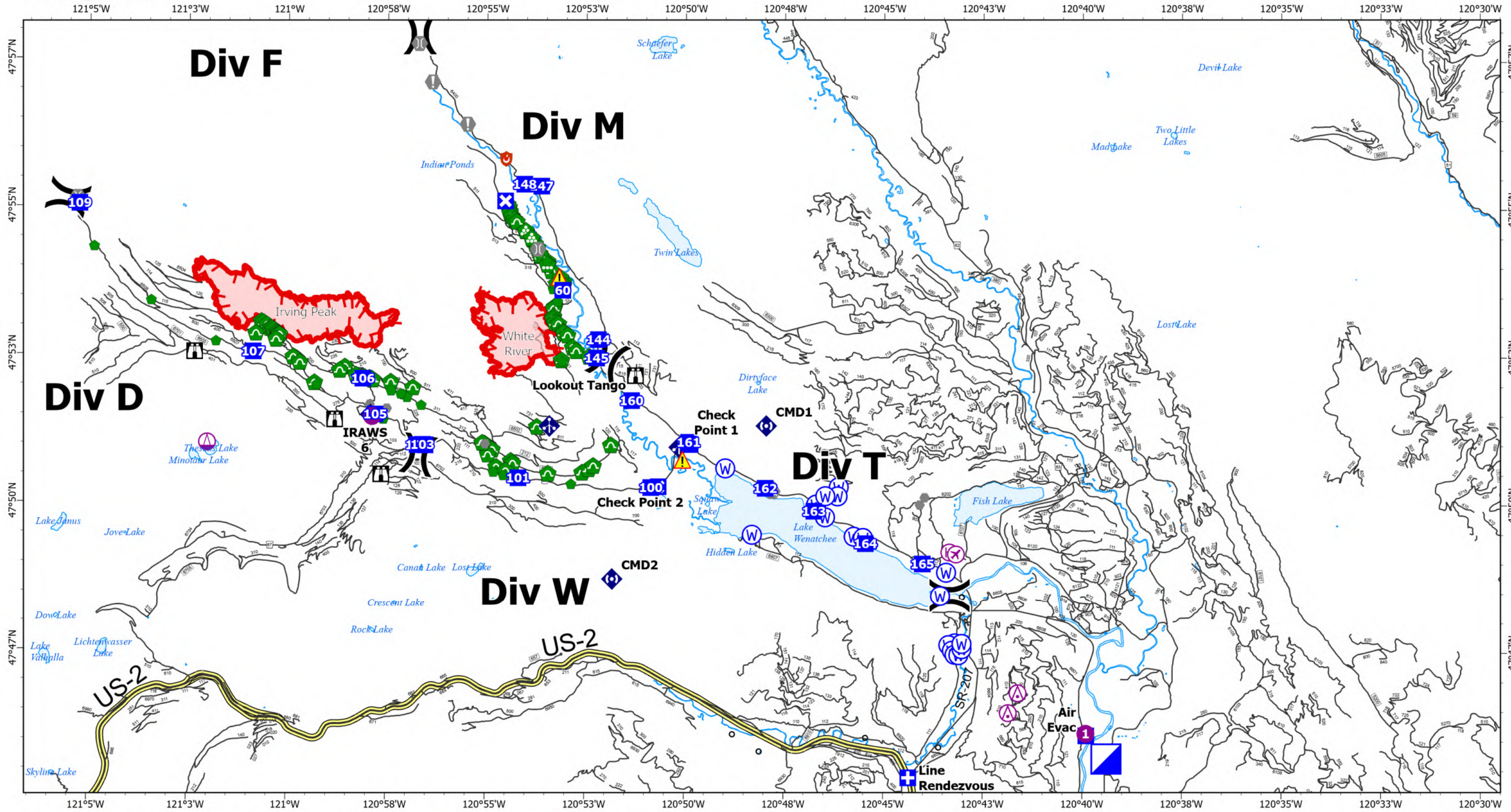
8/31/2022 2234



0.25 0.5 1 Miles



# Transportation



**White River**  
 WA-OWF-000319  
 1,089 acres  
 Map Updated: 8/31/2022  
 Acres as of 08/30/2022 2043

**Irving Peak**  
 WA-OWF-000318  
 1,829 acres

North American 1983 HARN Datum.  
 LatLong Grid

- |                     |                |                      |               |                     |              |             |
|---------------------|----------------|----------------------|---------------|---------------------|--------------|-------------|
| Aerial Hazard       | Sling Site     | Drop Point           | Value at Risk | Repair Point        | Repeater     | Contained   |
| Airstrip or Airport | Division Break | Closure              | Other         | Landing or Log Deck | Hazard       | Uncontained |
| Helispot            | Medical        | Lookout              | Gate          | Culvert             | Water Source | New Starts  |
| Helibase            | ICP            | Hot Spot - Spot Fire | Bridge        | Mobile Weather Unit | Label Point  |             |

