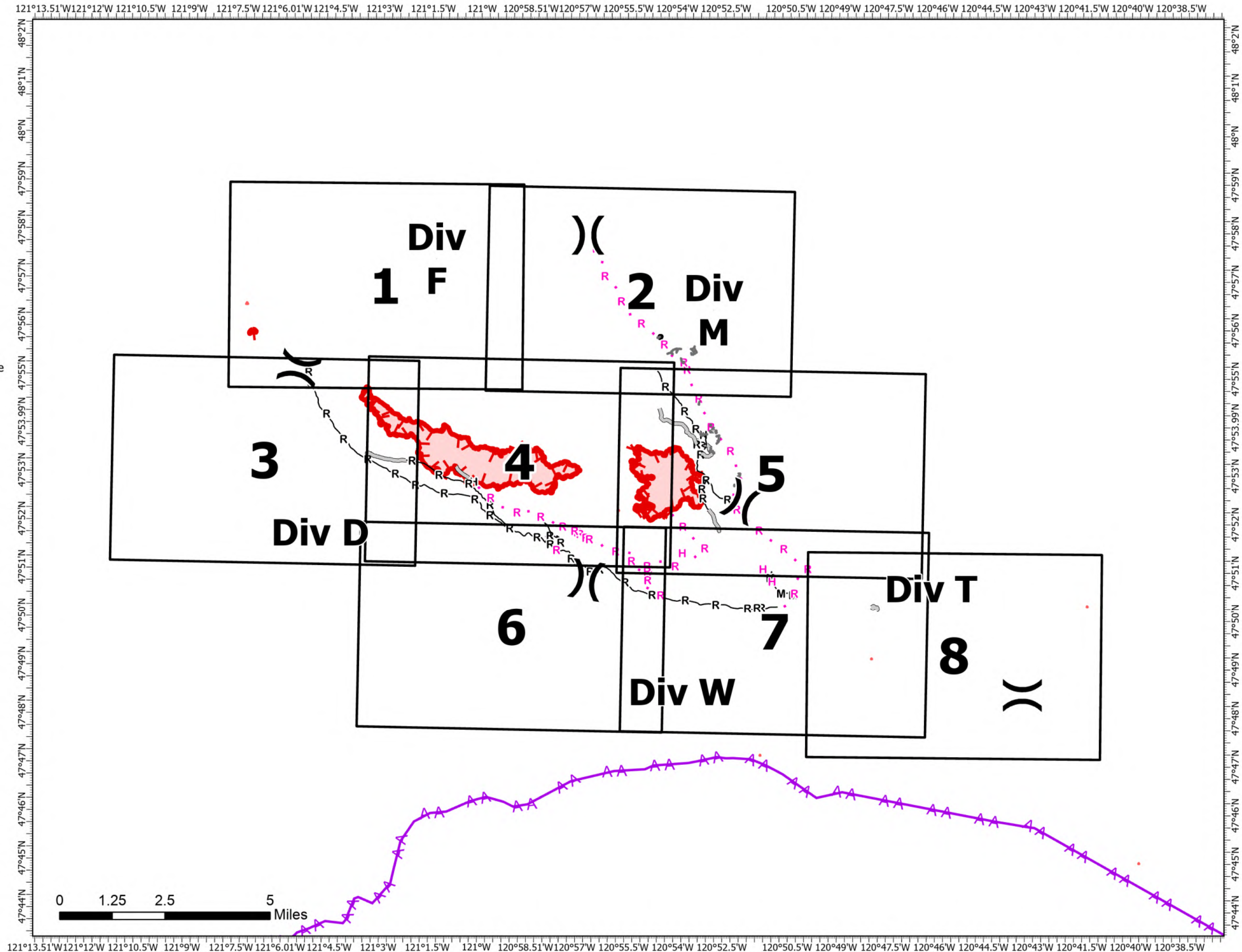
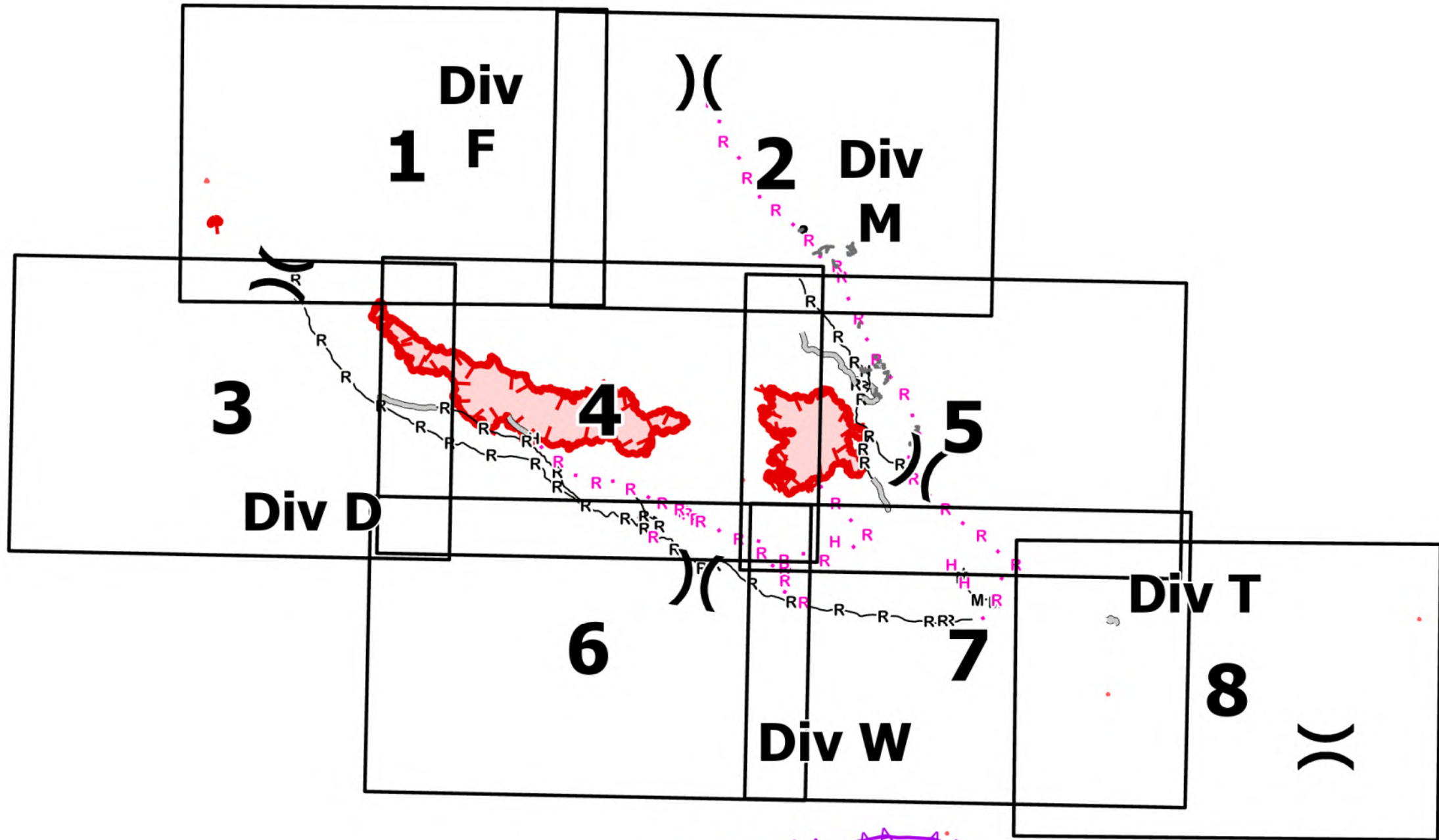


IAP
 9/1/2022
 White River
 WA-OWF-000319
 1,165 Acres

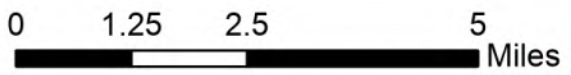
Irving Peak
 WA-OWF-000318
 2,240 Acres

Acres as of: 08/31/2022 2226

- (Division Break
- H Completed Hand Line
- M Completed Mixed Construction Line
- R Completed Road as Line
- H Planned Hand Line
- R Planned Road as Line
- Access or Improved Road
- Other
- AA Aerial Hazard
- ▬ Contained
- ▬ Uncontained



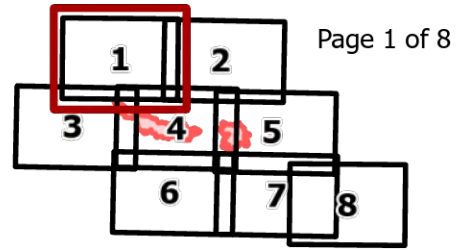
Map Updated:
 9/1/2022 @ 0642
 North American 1983 Datum. LatLong Grid



White River
WA-OWF-000319
1,165 Acres

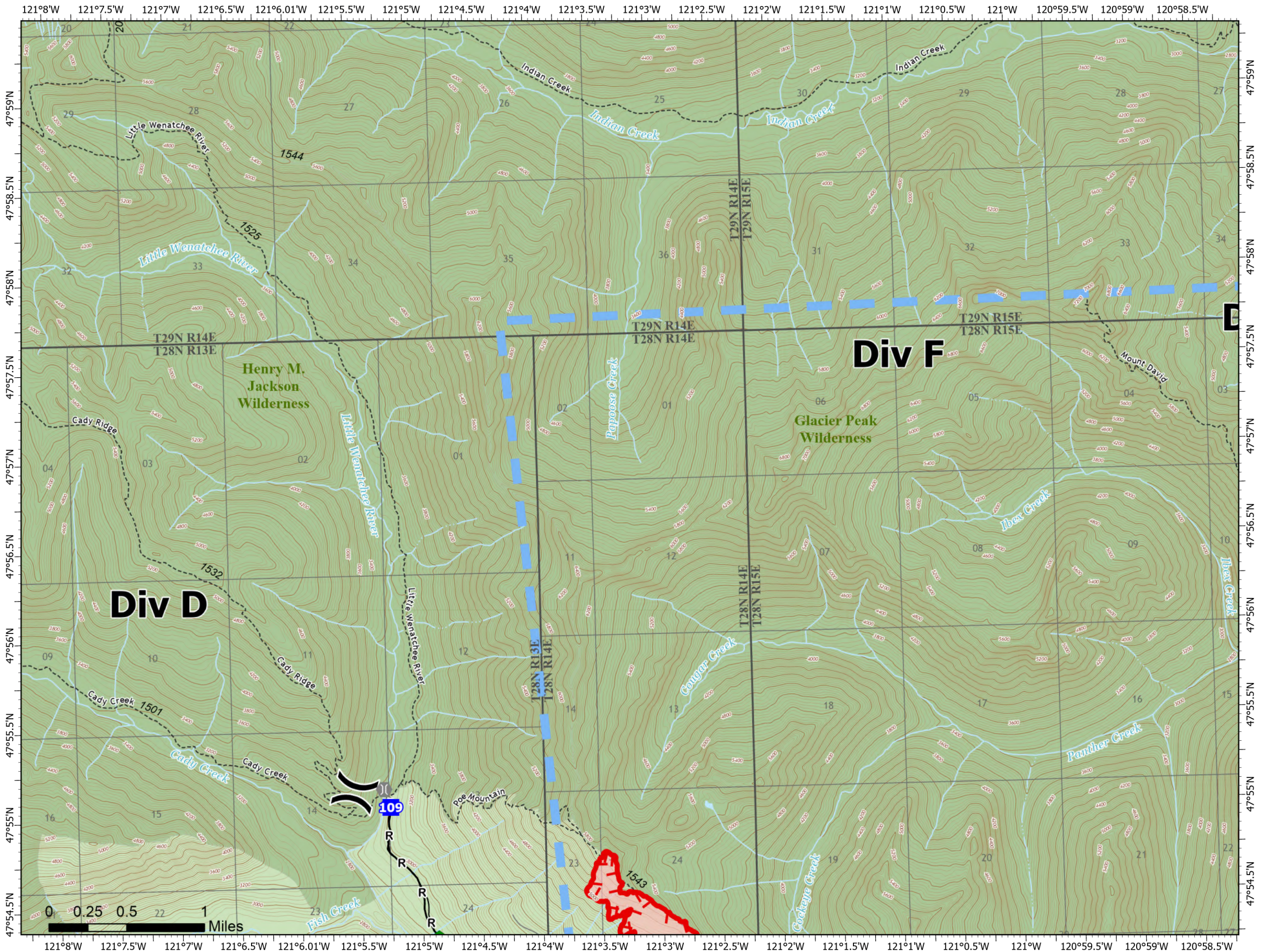
Irving Peak
WA-OWF-000318
2,240 Acres

Acres as of: 08/31/2022 2226

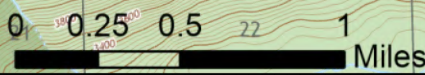


Page 1 of 8

- () Division Break
- Drop Point
- ⊕ Bridge
- ▲ Repair Point
- R Completed Road as Line
- ▬ Temporary Flight Restriction
- ▭ Uncontained
- Structures
- Open Roads
- Other Roads
- - - Trail
- Wilderness
- U.S. Forest Service



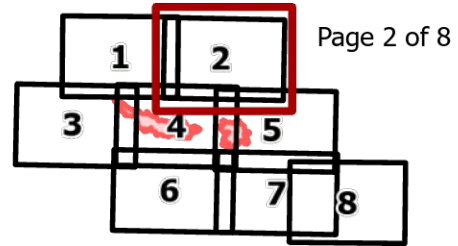
9/1/2022 0711



White River
WA-OWF-000319
1,165 Acres

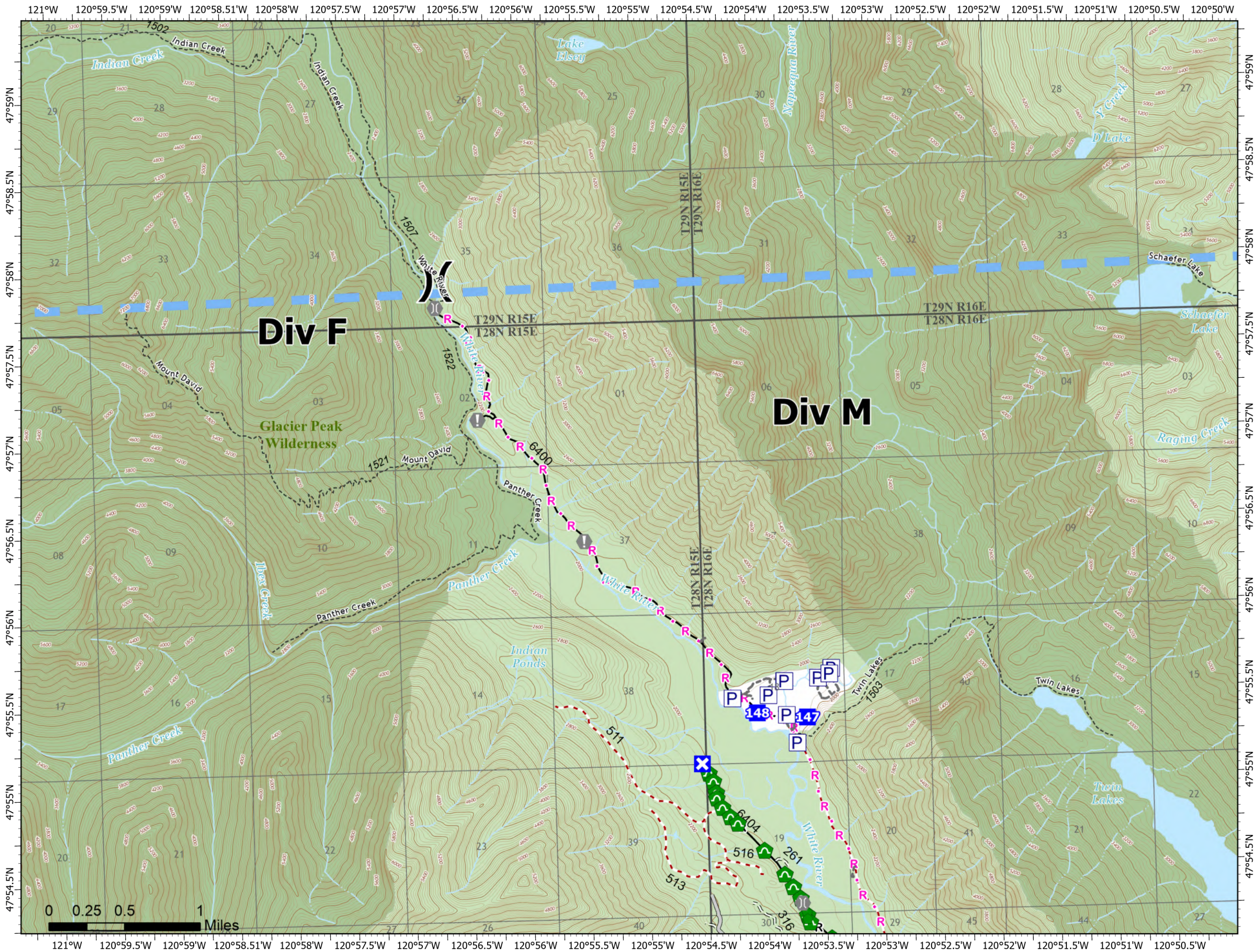
Irving Peak
WA-OWF-000318
2,240 Acres

Acres as of: 08/31/2022 2226



Page 2 of 8

- Pump
- Division Break
- Drop Point
- Closure
- Value at Risk
- Bridge
- Repair Point
- Culvert
- Completed Road as Line
- Planned Road as Line
- Access or Improved Road
- Other
- Temporary Flight Restriction
- Structures
- Open Roads
- Closed Roads
- Decommissioned Roads
- Trail
- Wilderness
- Private
- U.S. Forest Service



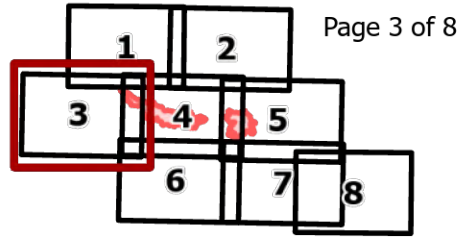
9/1/2022 0711



White River
WA-OWF-000319
1,165 Acres

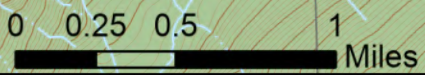
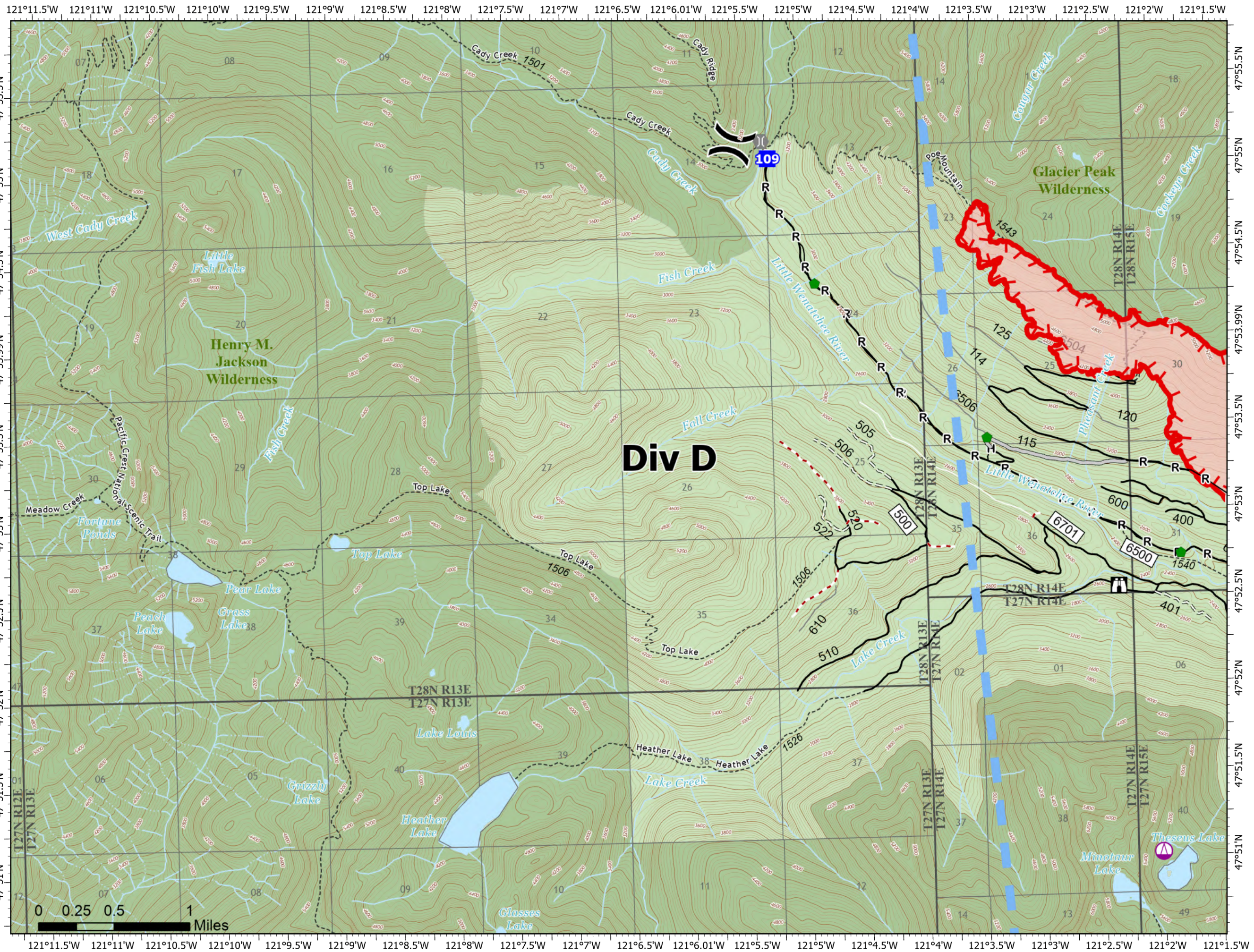
Irving Peak
WA-OWF-000318
2,240 Acres

Acres as of: 08/31/2022 2226



Page 3 of 8

- Sling Site
- Division Break
- Drop Point
- Lookout
- Bridge
- Repair Point
- Completed Hand Line
- Completed Road as Line
- Access or Improved Road
- Temporary Flight Restriction
- Uncontained
- Structures
- Open Roads
- Closed Roads
- Decommissioned Roads
- Other Roads
- Trail
- Wilderness
- U.S. Forest Service



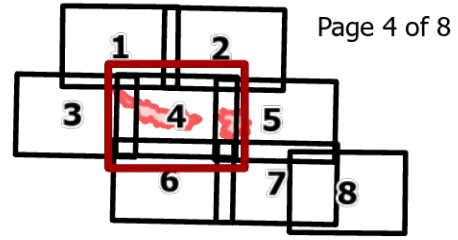
9/1/2022 0712



White River
WA-OWF-000319
1,165 Acres

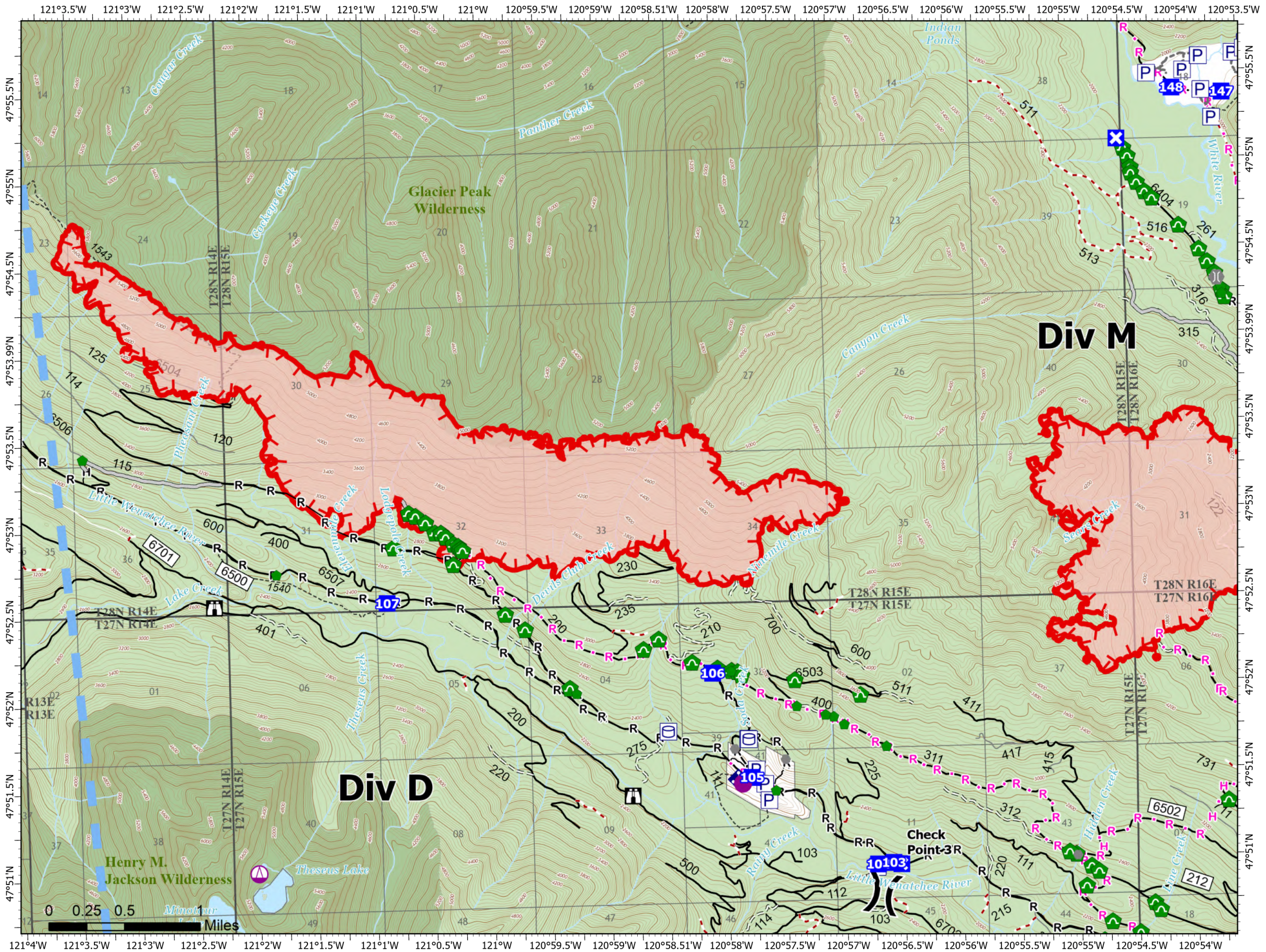
Irving Peak
WA-OWF-000318
2,240 Acres

Acres as of: 08/31/2022 2226



Page 4 of 8

- Pump
- Water Tank
- Helispot
- Sling Site
- Division Break
- Drop Point
- Closure
- Lookout
- Other
- Bridge
- Repair Point
- Culvert
- Mobile Weather Unit
- Completed Hand Line
- Completed Road as Line
- Planned Hand Line
- Planned Road as Line
- Access or Improved Road
- Other
- Temporary Flight Restriction
- Uncontained
- Structures
- Open Roads
- Closed Roads
- Decommissioned Roads
- Other Roads
- Trail
- Wilderness
- Private
- U.S. Forest Service



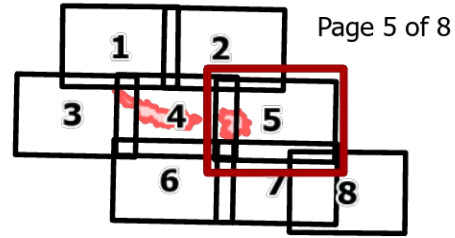
9/1/2022 0712



White River
WA-OWF-000319
1,165 Acres

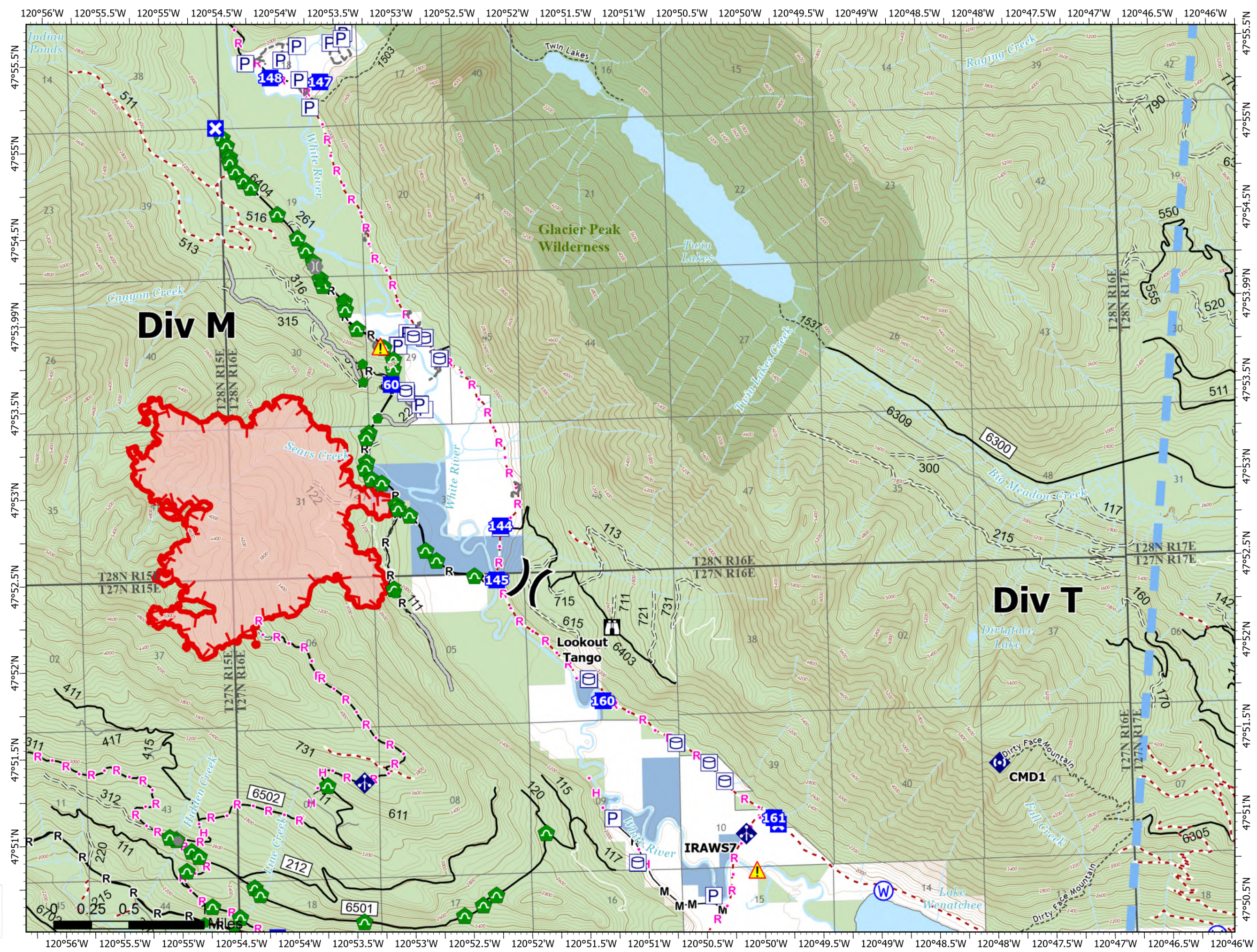
Irving Peak
WA-OWF-000318
2,240 Acres

Acres as of: 08/31/2022 2226



Page 5 of 8

- Pump
- Water Tank
- Division Break
- Drop Point
- Closure
- Lookout
- Other
- Gate
- Bridge
- Repair Point
- Culvert
- Mobile Weather Unit
- Repeater
- Hazard
- Water Source
- Completed Hand Line
- Completed Mixed Construction Line
- Completed Road as Line
- Planned Hand Line
- Planned Road as Line
- Access or Improved Road
- Other
- Temporary Flight Restriction
- Uncontained
- Structures
- Open Roads
- Closed Roads
- Decommissioned Roads
- Other Roads
- Trail
- Wilderness
- Private
- State
- U.S. Forest Service



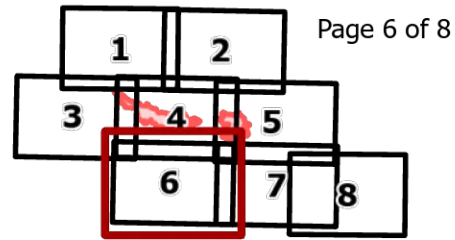
9/1/2022 0712



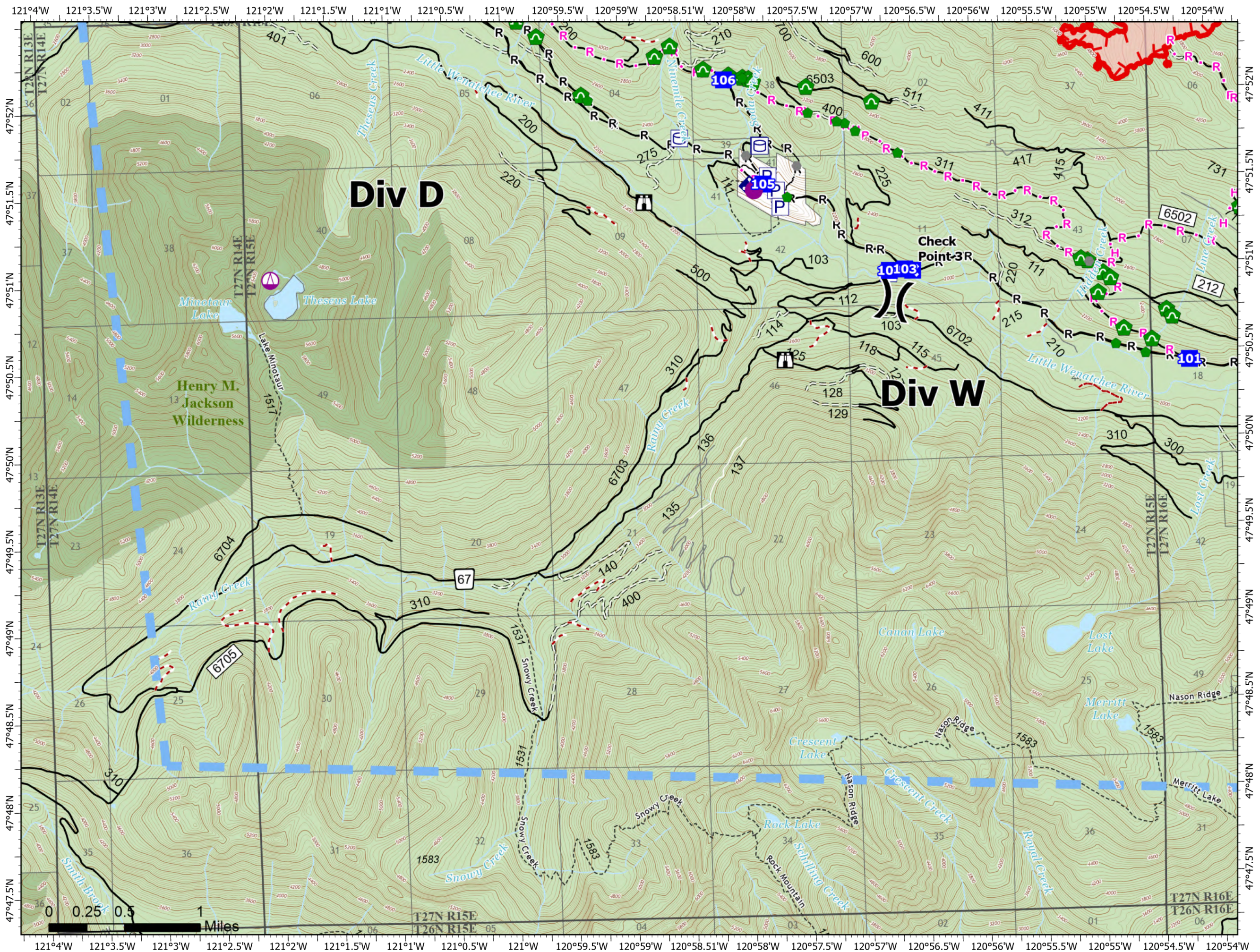
White River
WA-OWF-000319
1,165 Acres

Irving Peak
WA-OWF-000318
2,240 Acres

Acres as of: 08/31/2022 2226



- Pump
- Water Tank
- Helispot
- Sling Site
- Division Break
- Drop Point
- Closure
- Lookout
- Other
- Repair Point
- Culvert
- Mobile Weather Unit
- Completed Hand Line
- Completed Road as Line
- Planned Hand Line
- Planned Road as Line
- Temporary Flight Restriction
- Uncontained
- Structures
- Open Roads
- Closed Roads
- Decommissioned Roads
- Other Roads
- Trail
- Wilderness
- Private
- U.S. Forest Service



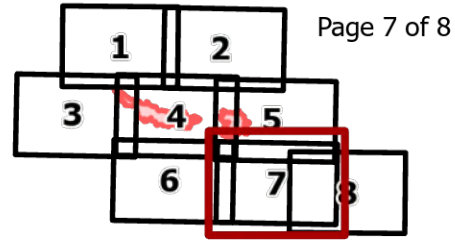
9/1/2022 0713



White River
WA-OWF-000319
1,165 Acres

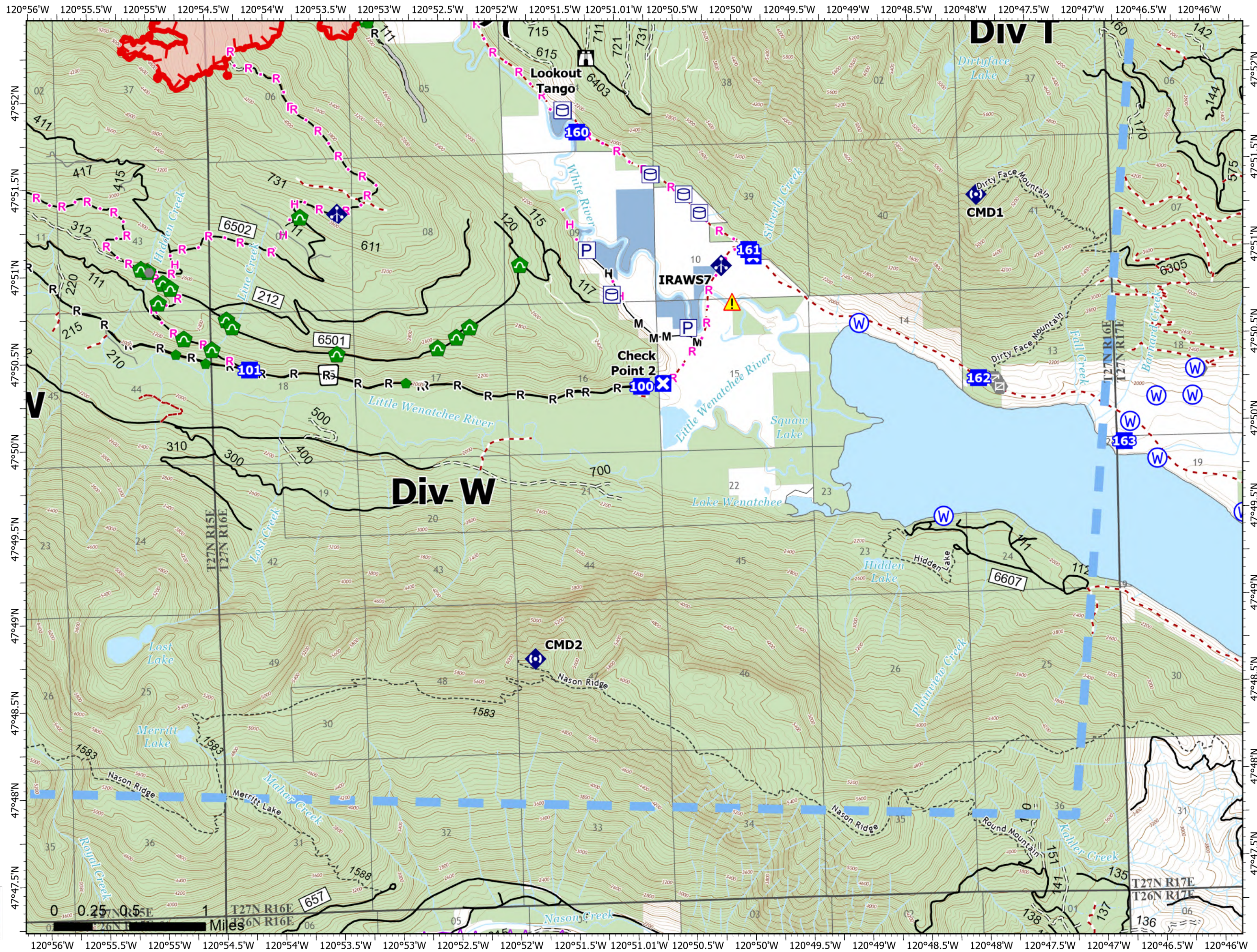
Irving Peak
WA-OWF-000318
2,240 Acres

Acres as of: 08/31/2022 2226



Page 7 of 8

- Pump
- Water Tank
- Division Break
- Drop Point
- Closure
- Lookout
- Other
- Gate
- Repair Point
- Culvert
- Mobile Weather Unit
- Repeater
- Hazard
- Water Source
- Completed Hand Line
- Completed Mixed Construction Line
- Completed Road as Line
- Planned Hand Line
- Planned Road as Line
- Access or Improved Road
- Aerial Hazard
- Temporary Flight Restriction
- Uncontained Structures
- Open Roads
- Closed Roads
- Decommissioned Roads
- Other Roads
- Trail
- Private
- State
- U.S. Forest Service



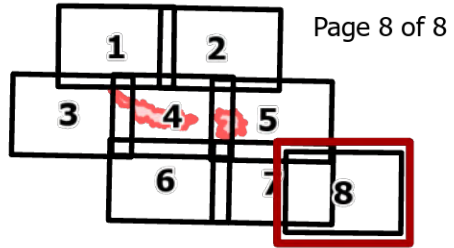
9/1/2022 0713



White River
WA-OWF-000319
1,165 Acres

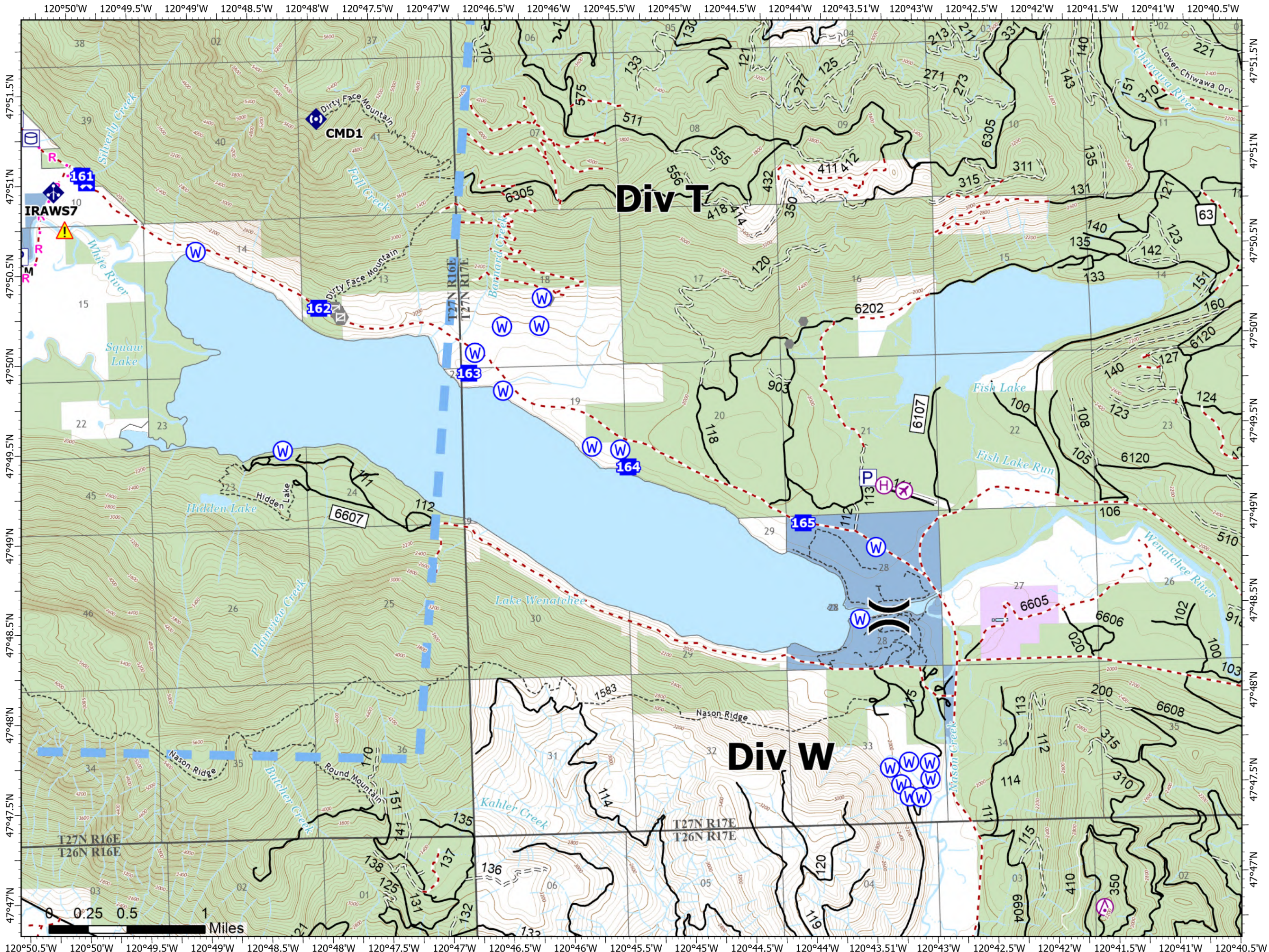
Irving Peak
WA-OWF-000318
2,240 Acres

Acres as of: 08/31/2022 2226



Page 8 of 8

- Pump
- Water Tank
- Aerial Hazard
- Airstrip or Airport
- Helibase
- Division Break
- Drop Point
- Closure
- Other
- Gate
- Mobile Weather Unit
- Repeater
- Hazard
- Water Source
- Completed Mixed Construction Line
- Planned Road as Line
- Access or Improved Road
- Aerial Hazard
- Temporary Flight Restriction
- Structures
- Open Roads
- Closed Roads
- Decommissioned Roads
- Trail
- Local Government
- Private
- State
- U.S. Forest Service

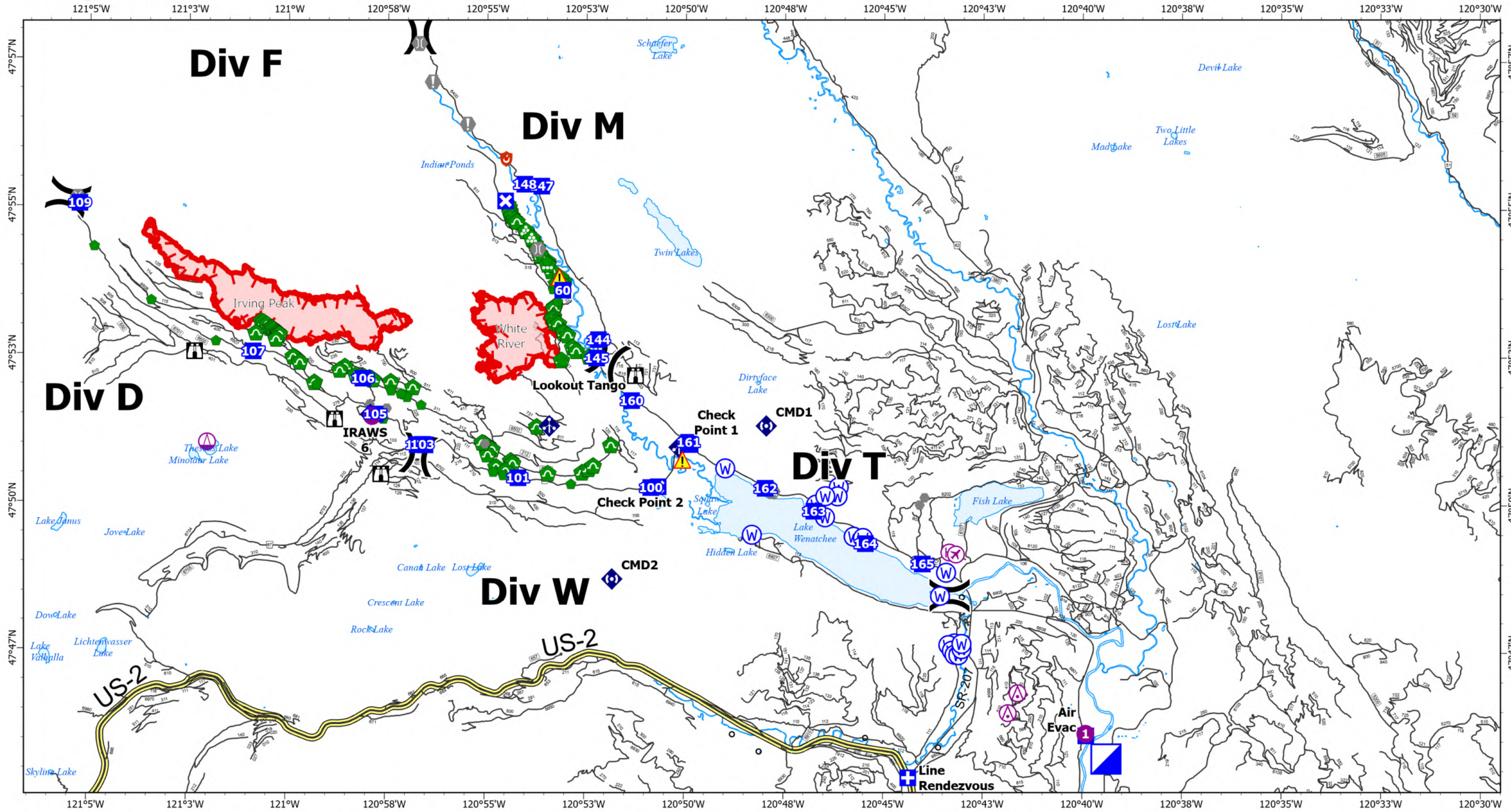


9/1/2022 0713



0 0.25 0.5 1 Miles

Transportation



White River
WA-OWF-000319

1,165 acres
Map Updated: 9/1/2022
Acres as of 08/31/2022 2226

Irving Peak
WA-OWF-000318

2,240 acres

North American 1983 HARN Datum.
LatLong Grid

- | | | | | | | |
|---------------------|----------------|----------------------|---------------|---------------------|--------------|-------------|
| Aerial Hazard | Sling Site | Drop Point | Value at Risk | Repair Point | Repeater | Contained |
| Airstrip or Airport | Division Break | Closure | Other | Landing or Log Deck | Hazard | Uncontained |
| Helispot | Medical | Lookout | Gate | Culvert | Water Source | New Starts |
| Helibase | ICP | Hot Spot - Spot Fire | Bridge | Mobile Weather Unit | Label Point | |

