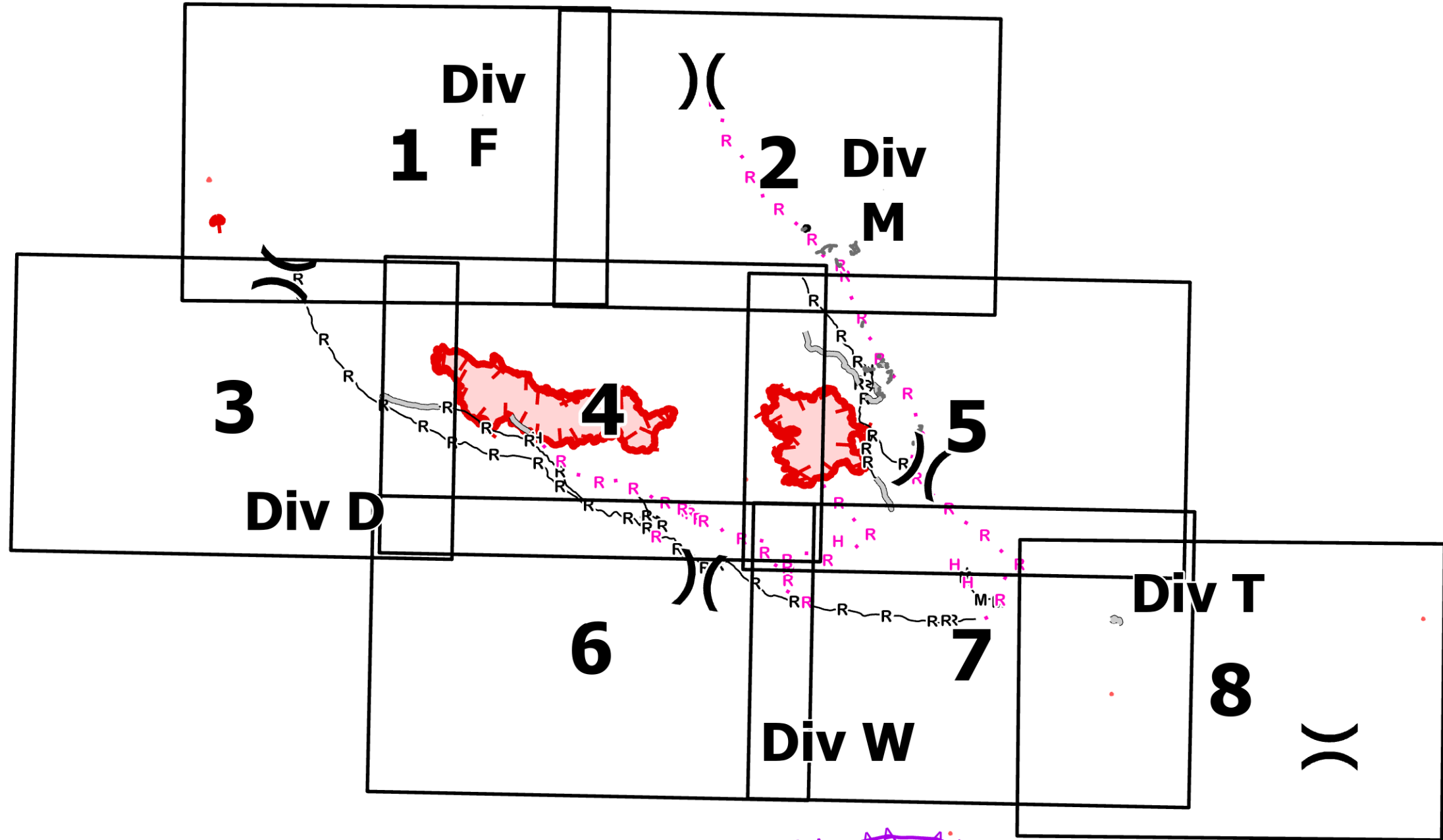


IAP
 9/1/2022
 White River
 WA-OWF-000319
 1,089 Acres

Irving Peak
 WA-OWF-000318
 1,829 Acres
 Acres as of: 08/30/2022 2043

- (Division Break
- H Completed Hand Line
- M Completed Mixed Construction Line
- R Completed Road as Line
- H Planned Hand Line
- R Planned Road as Line
- Access or Improved Road
- Other
- AA Aerial Hazard
- ▬ Contained
- ▬ Uncontained



Map Updated:
 8/31/2022 @ 2123
 North American 1983 Datum. LatLong Grid

