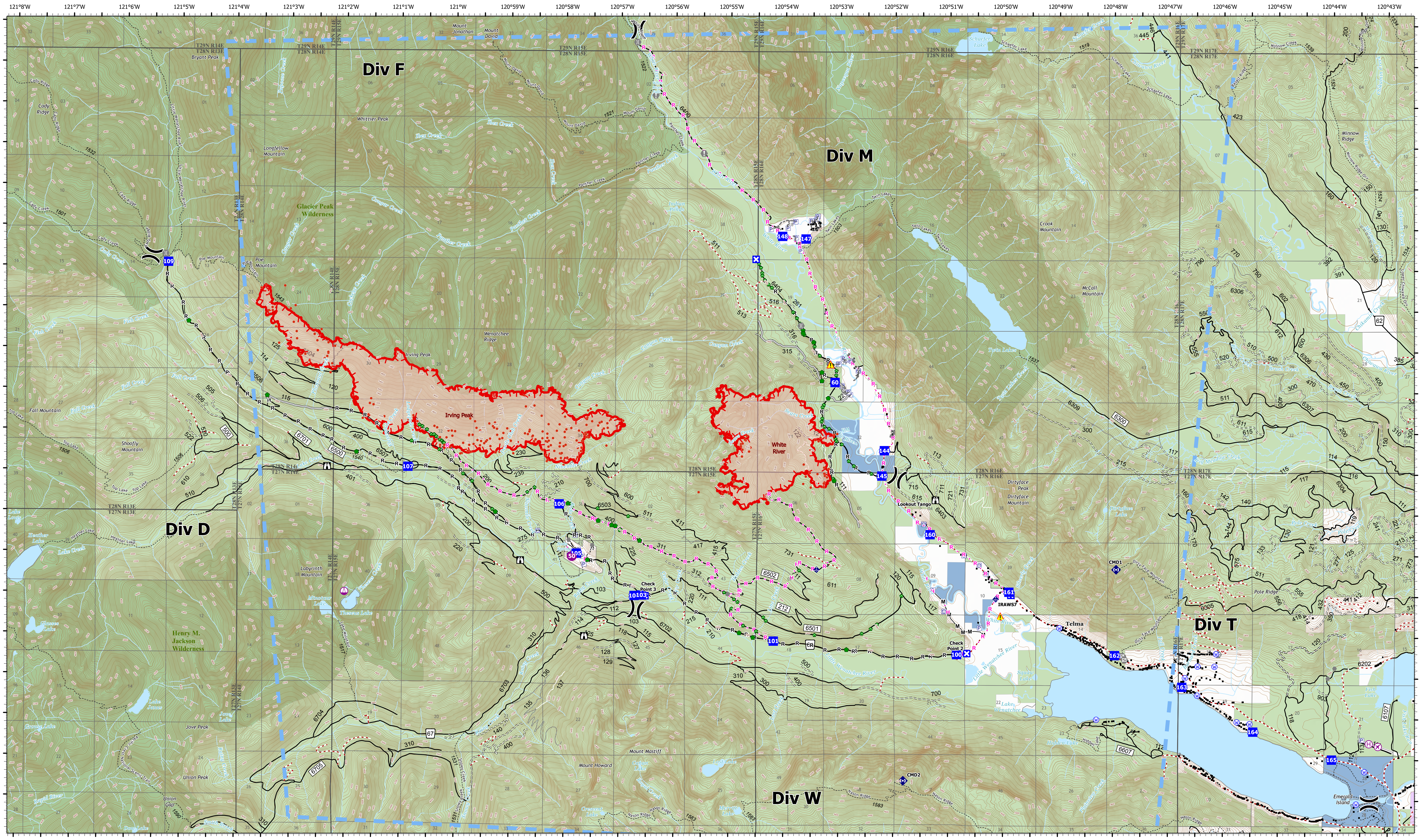


Operations



White River
WA-OWF-000319
1,165 acres

Irving Peak
WA-OWF-000315
2,240 acres

09/01/2022 Day
Acres as of 08/31/2022 2226
Map Updated: 9/1/2022 5:49 AM

- | | | | | | |
|-----------------------|-----------------|-----------------------|-------------------------------------|---------------------------------|--|
| ⊙ Airstrip or Airport | ⊠ Closure | ⬢ Repair Point | ■ Structures | ⋯ Planned Hand Line | ● VIIRS Thermal Hotspots and Fire Activity |
| ⊙ Helispot | ⊠ Lookout | ⬢ Culvert | ⊠ Pump | ⋯ Planned Road as Line | ■ Wilderness |
| ⊙ Helibase | ⊠ Value at Risk | ⬢ Mobile Weather Unit | ⊠ Water Tank | ⋯ Access or Improved Road | ■ Local Government |
| ⊙ Sling Site | ⊠ Other | ⬢ Repeater | — Completed Hand Line | ⋯ Other | ■ Private |
| ⊙ Division Break | ⊠ Gate | ⬢ Hazard | — Completed Mixed Construction Line | ⋯ Temporary Flight Restriction | ■ State |
| ⊙ Drop Point | ⊠ Bridge | ⬢ Water Source | — Completed Road as Line | ⋯ Wildfire Daily Fire Perimeter | ■ U.S. Forest Service |

N
W E
S

0 0.25 0.5 1 1.5 Miles