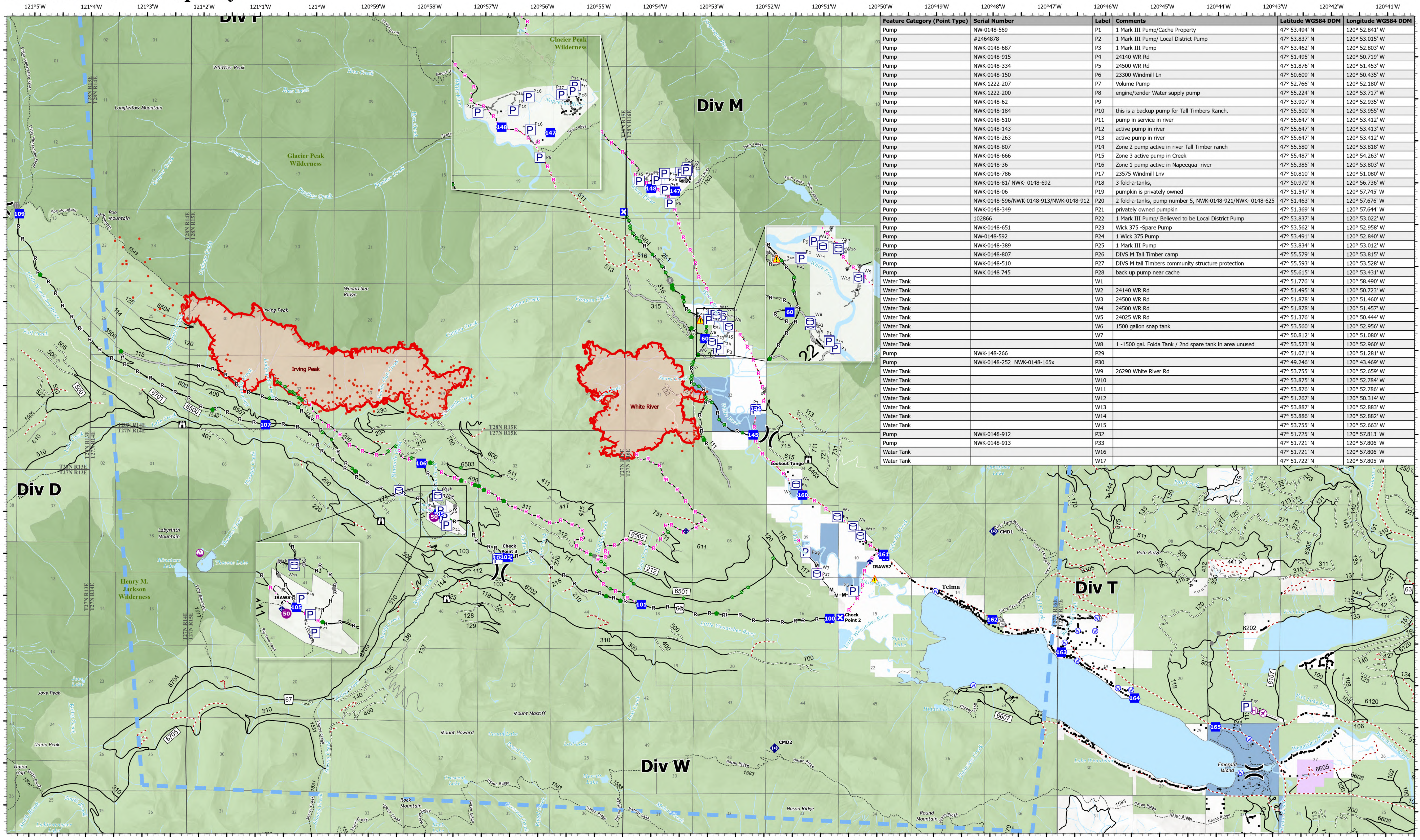


Accountable Property



Feature Category (Point Type)	Serial Number	Label	Comments	Latitude WGS84 DDM	Longitude WGS84 DDM
Pump	NW-0148-569	P1	1 Mark III Pump/Cache Property	47° 53.494' N	120° 52.841' W
Pump	#2464878	P2	1 Mark III Pump/ Local District Pump	47° 53.837' N	120° 53.015' W
Pump	NWK-0148-687	P3	1 Mark III Pump	47° 53.462' N	120° 52.803' W
Pump	NWK-0148-915	P4	24140 WR Rd	47° 51.495' N	120° 50.719' W
Pump	NWK-0148-334	P5	24500 WR Rd	47° 51.876' N	120° 51.453' W
Pump	NWK-0148-150	P6	23300 Windmill Ln	47° 50.609' N	120° 50.435' W
Pump	NWK-1222-207	P7	Volume Pump	47° 52.766' N	120° 52.180' W
Pump	NWK-1222-200	P8	engine/tender Water supply pump	47° 55.224' N	120° 53.717' W
Pump	NWK-0148-62	P9		47° 53.907' N	120° 52.935' W
Pump	NWK-0148-184	P10	this is a backup pump for Tall Timbers Ranch.	47° 55.500' N	120° 53.955' W
Pump	NWK-0148-510	P11	pump in service in river	47° 55.647' N	120° 53.412' W
Pump	NWK-0148-143	P12	active pump in river	47° 55.647' N	120° 53.413' W
Pump	NWK-0148-263	P13	active pump in river	47° 55.647' N	120° 53.412' W
Pump	NWK-0148-807	P14	Zone 2 pump active in river Tall Timber ranch	47° 55.580' N	120° 53.818' W
Pump	NWK-0148-666	P15	Zone 3 active pump in Creek	47° 55.487' N	120° 54.263' W
Pump	NWK-0148-36	P16	Zone 1 pump active in Napeequa river	47° 55.385' N	120° 53.803' W
Pump	NWK-0148-786	P17	23575 Windmill Lnv	47° 50.810' N	120° 51.080' W
Pump	NWK-0148-81/ NWK- 0148-692	P18	3 fold-a-tanks,	47° 50.970' N	120° 56.736' W
Pump	NWK-0148-06	P19	pumpkin is privately owned	47° 51.547' N	120° 57.745' W
Pump	NWK-0148-596/NWK-0148-913/NWK-0148-912	P20	2 fold-a-tanks, pump number 5, NWK-0148-921/NWK- 0148-625	47° 51.463' N	120° 57.676' W
Pump	NWK-0148-349	P21	privately owned pumpkin	47° 51.369' N	120° 57.644' W
Pump	102866	P22	1 Mark III Pump/ Believed to be Local District Pump	47° 53.837' N	120° 53.022' W
Pump	NWK-0148-651	P23	Wick 375 -Spare Pump	47° 53.562' N	120° 52.958' W
Pump	NW-0148-592	P24	1 Wick 375 Pump	47° 53.491' N	120° 52.840' W
Pump	NWK-0148-389	P25	1 Mark III Pump	47° 53.834' N	120° 53.012' W
Pump	NWK-0148-807	P26	DIVS M Tall Timber camp	47° 55.579' N	120° 53.815' W
Pump	NWK-0148-510	P27	DIVS M tall Timbers community structure protection	47° 55.593' N	120° 53.528' W
Pump	NWK 0148 745	P28	back up pump near cache	47° 55.615' N	120° 53.431' W
Water Tank		W1		47° 51.776' N	120° 58.490' W
Water Tank		W2	24140 WR Rd	47° 51.495' N	120° 50.723' W
Water Tank		W3	24500 WR Rd	47° 51.878' N	120° 51.460' W
Water Tank		W4	24500 WR Rd	47° 51.878' N	120° 51.457' W
Water Tank		W5	24025 WR Rd	47° 51.376' N	120° 50.444' W
Water Tank		W6	1500 gallon snap tank	47° 53.560' N	120° 52.956' W
Water Tank		W7		47° 50.812' N	120° 51.080' W
Water Tank		W8	1 -1500 gal. Folda Tank / 2nd spare tank in area unused	47° 53.573' N	120° 52.960' W
Pump	NWK-148-266	P29		47° 51.071' N	120° 51.281' W
Pump	NWK-0148-252 NWK-0148-165x	P30		47° 49.246' N	120° 43.469' W
Water Tank		W9	26290 White River Rd	47° 53.755' N	120° 52.659' W
Water Tank		W10		47° 53.875' N	120° 52.784' W
Water Tank		W11		47° 53.876' N	120° 52.786' W
Water Tank		W12		47° 51.267' N	120° 50.314' W
Water Tank		W13		47° 53.887' N	120° 52.883' W
Water Tank		W14		47° 53.886' N	120° 52.882' W
Water Tank		W15		47° 53.755' N	120° 52.663' W
Pump	NWK-0148-912	P32		47° 51.725' N	120° 57.813' W
Pump	NWK-0148-913	P33		47° 51.721' N	120° 57.806' W
Water Tank		W16		47° 51.721' N	120° 57.806' W
Water Tank		W17		47° 51.722' N	120° 57.805' W

White River
 WA-OWF-000319
 1,089 acres
 09/01/2022 Day
 Acres as of 08/30/2022 2043
 Map Updated: 8/31/2022 9:26 PM

Irving Peak
 WA-OWF-000315
 1,829 acres

- ⊙ Airstrip or Airport
- ⊠ Closure
- ⬢ Repair Point
- ⬛ Structures
- ⊙ Helispot
- ⊠ Lookout
- ⬢ Culvert
- ⬛ Pump
- ⊙ Helibase
- ⊙ Value at Risk
- ⬢ Mobile Weather Unit
- ⬛ Water Tank
- ⊙ Sling Site
- ⊙ Other
- ⬢ Repeater
- ⬛ Completed Hand Line
- ⊙ Division Break
- ⊙ Gate
- ⬢ Hazard
- ⬛ Completed Mixed Construction Line
- ⊙ Drop Point
- ⊙ Bridge
- ⊙ Water Source
- ⬛ Completed Road as Line
- ⬢ Planned Hand Line
- ⬢ Planned Road as Line
- ⬢ Access or Improved Road
- ⬢ Other
- ⬢ Temporary Flight Restriction
- ⬢ Wildfire Daily Fire Perimeter
- ⬢ Wilderness
- ⬢ Local Government
- ⬢ Private
- ⬢ State
- ⬢ U.S. Forest Service
- ⬢ VIIRS Thermal Hotspots and Fire Activity