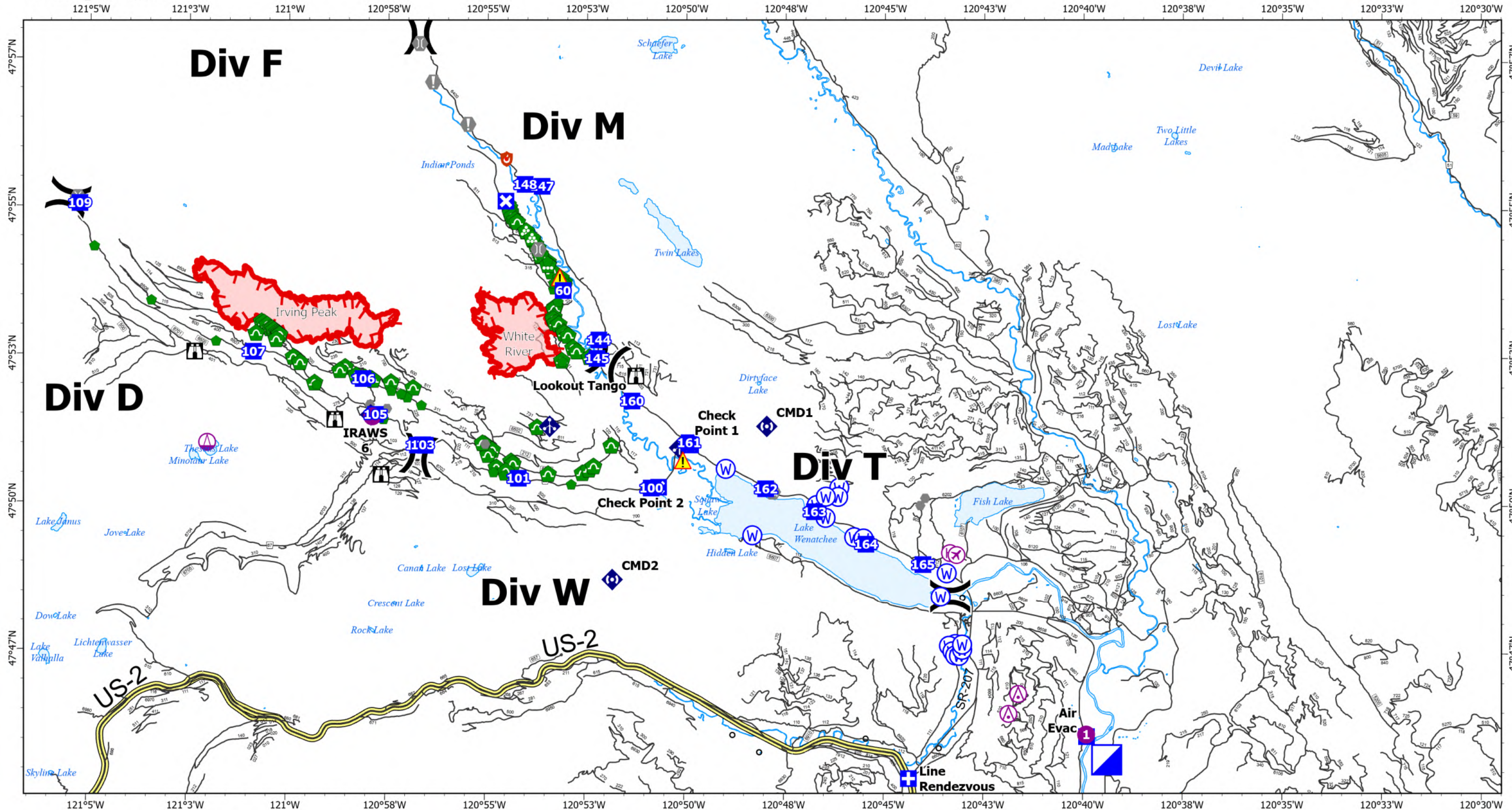


Transportation



White River
WA-OWF-000319

1,089 acres
Map Updated: 8/31/2022
Acres as of 08/30/2022 2043

Irving Peak
WA-OWF-000318

1,829 acres

North American 1983 HARN Datum.
LatLong Grid

- | | | | | | | |
|---------------------|----------------|----------------------|---------------|---------------------|--------------|-------------|
| Aerial Hazard | Sling Site | Drop Point | Value at Risk | Repair Point | Repeater | Contained |
| Airstrip or Airport | Division Break | Closure | Other | Landing or Log Deck | Hazard | Uncontained |
| Helispot | Medical | Lookout | Gate | Culvert | Water Source | New Starts |
| Helibase | ICP | Hot Spot - Spot Fire | Bridge | Mobile Weather Unit | Label Point | |

