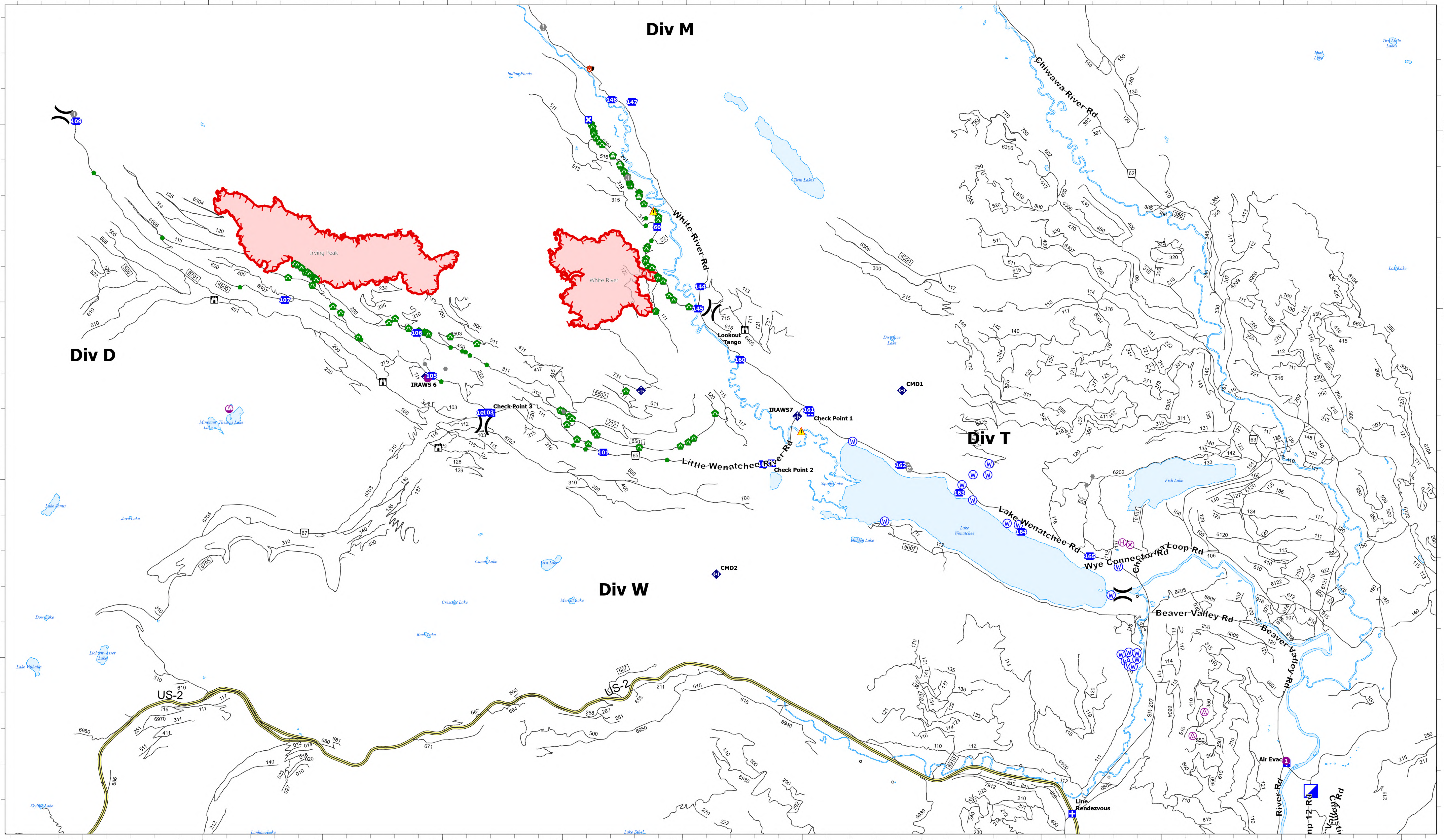


# Transportation



**White River**  
 WA-OWF-000319  
 1,089 acres  
 Acres as of 08/30/2022 2043  
 Map Updated: 8/31/2022

**Irving Peak**  
 WA-OWF-000318  
 1,829 acres

- |                     |                |            |                 |               |                |                |              |
|---------------------|----------------|------------|-----------------|---------------|----------------|----------------|--------------|
| Aerial Hazard       | Helibase       | Medical    | Closure         | Value at Risk | Bridge         | Culvert        | Hazard       |
| Airstrip or Airport | Sling Site     | ICP        | Lookout         | Other         | Repair Point   | Mobile Weather | Water Source |
| Helispot            | Division Break | Drop Point | Hot Spot - Spot | Gate          | Landing or Log | Unit           | New Starts   |
|                     |                |            | Fire            |               | Deck           | Repeater       |              |

8/31/2022 2121