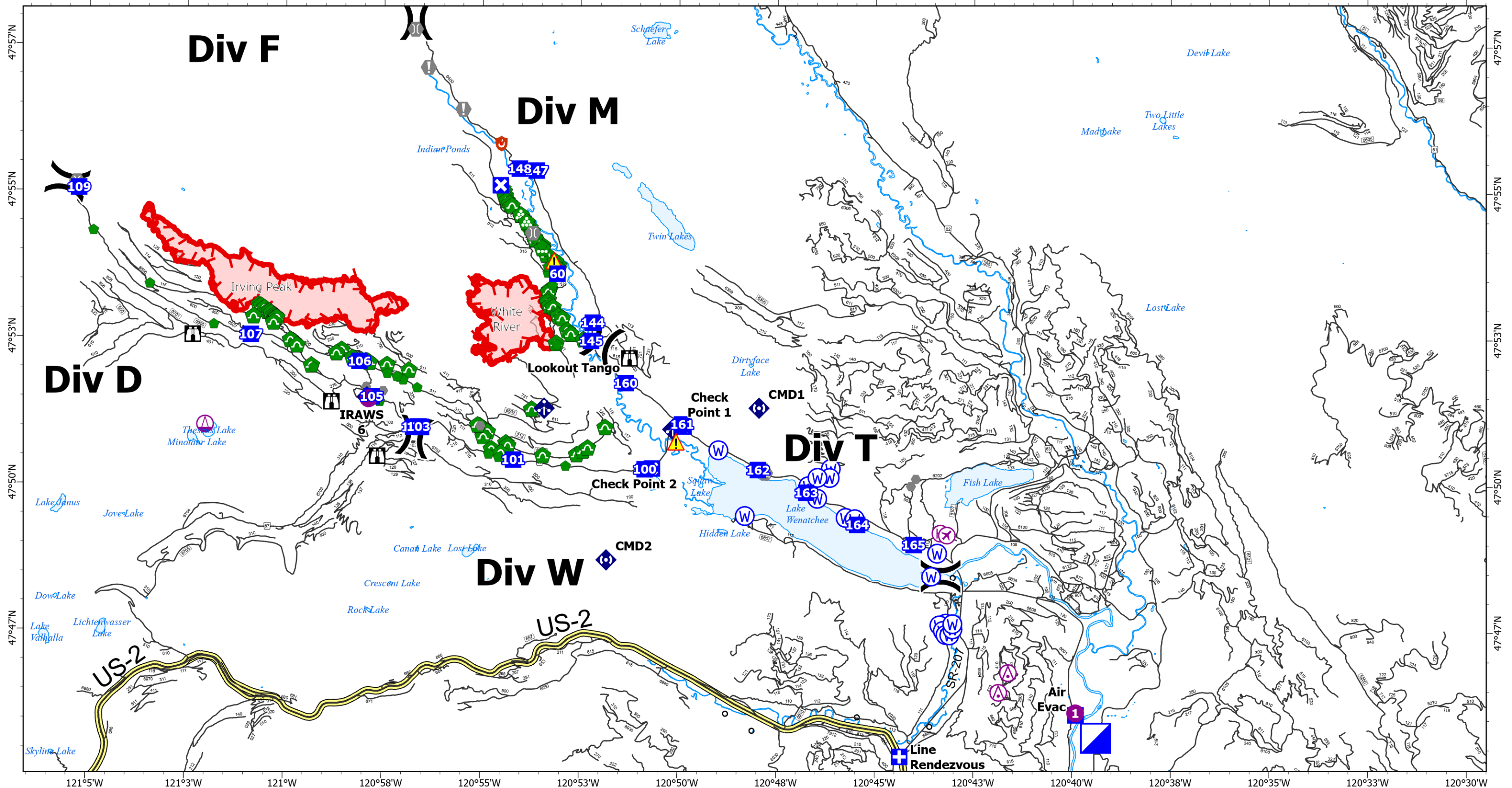


# Transportation

121°5'W 121°3'W 121°W 120°58'W 120°55'W 120°53'W 120°50'W 120°48'W 120°45'W 120°43'W 120°40'W 120°38'W 120°35'W 120°33'W 120°30'W



**White River**  
WA-OWF-000319  
1,165 acres  
Map Updated: 9/1/2022  
Acres as of 08/31/2022 2226

**Irving Peak**  
WA-OWF-000318  
2,240 acres

Aerial Hazard	Sling Site	Drop Point	Value at Risk	Repair Point	Repeater	Contained
Airstrip or Airport	Division Break	Closure	Other	Landing or Log Deck	Hazard	Uncontained
Helispot	Medical	Lookout	Gate	Culvert	Water Source	New Starts
Helibase	ICP	Hot Spot - Spot Fire	Bridge	Mobile Weather Unit	Label Point	

0 1 2 3 4 5 6 Miles

North American 1983 HARN Datum.  
LatLong Grid