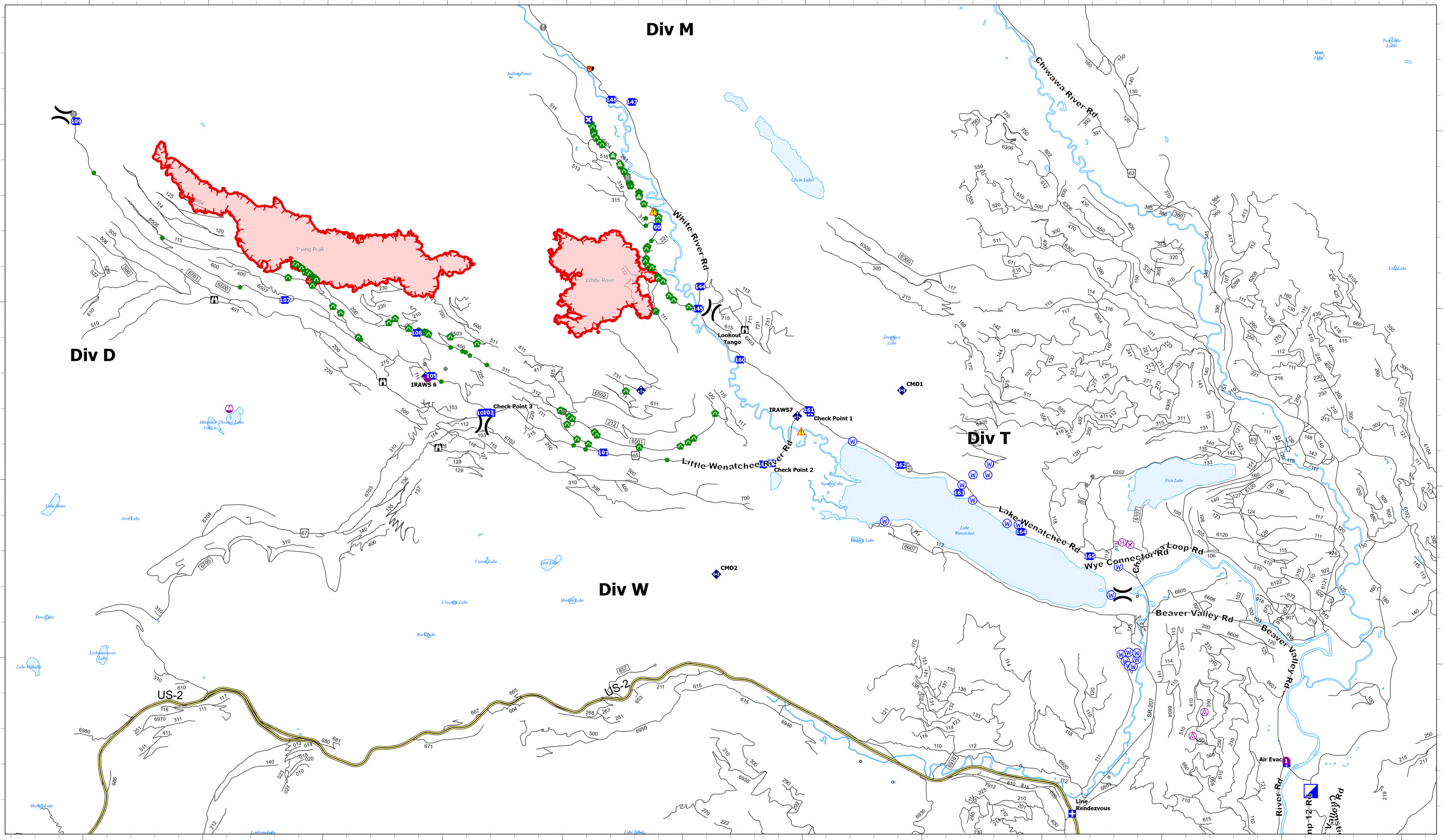


Transportation



White River
 WA-OWF-000319
 1,165 acres
 Acres as of 08/31/2022 2226
 Map Updated: 9/1/2022

Irving Peak
 WA-OWF-000318
 2,240 acres

- | | | | | | | | |
|---------------------|----------------|------------|-----------------|---------------|----------------|----------------|--------------|
| Aerial Hazard | Helibase | Medical | Closure | Value at Risk | Bridge | Culvert | Hazard |
| Airstrip or Airport | Sling Site | ICP | Lookout | Other | Repair Point | Mobile Weather | Water Source |
| Helispot | Division Break | Drop Point | Hot Spot - Spot | Gate | Landing or Log | Unit | New Starts |
| | | | Fire | | Deck | Repeater | |

9/1/2022 0620

0 0.5 1 1.5 2 2.5 3 Miles

