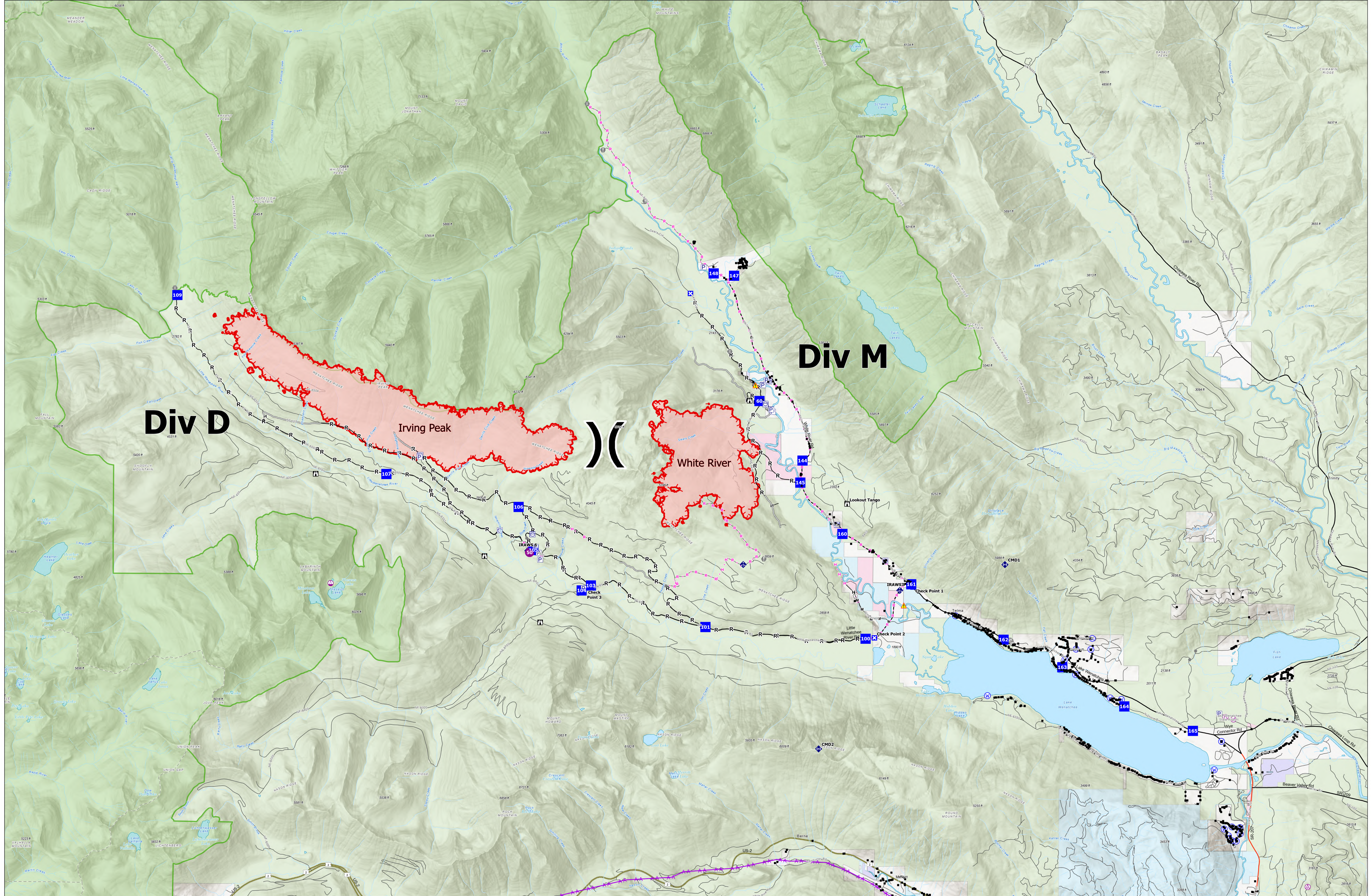


# Briefing



**White River** WA-OWF-000319  
1522 acres

**Irving Peak** WA-OWF-000315  
3018 acres

Acres as of: 09/05/2022 2134  
Map Created: 9/6/2022 2005

- |                       |                       |                                     |                            |                             |              |
|-----------------------|-----------------------|-------------------------------------|----------------------------|-----------------------------|--------------|
| ⊗ Aerial Hazard       | ⊠ Closure             | ⬢ Repeater                          | ⋯ Planned Road as Line     | — Major Arterial Collector  | ⬜ Private    |
| ✈ Airstrip or Airport | 👁 Lookout             | ⚠ Hazard                            | — Access or Improved Road  | — Aterterial or Collector   | ⬜ State      |
| ⊙ Helispot            | ⚠ Value at Risk       | 🌊 Water Source                      | — Other                    | — Local Road or City Street | 🌿 Wilderness |
| ⊙ Helibase            | ⊙ Other               | — Completed Hand Line               | ⚡ Aerial Hazard            | ⬛ Structures                |              |
| ⊙ Sling Site          | ⊙ Gate                | — Completed Mixed Construction Line | — Contained                | ⬜ Conserve                  |              |
| ⊙ Division Break      | ⊙ Bridge              | — Completed Road as Line            | — Uncontained              | ⬜ County                    |              |
| ⬜ Drop Point          | ⬢ Mobile Weather Unit | — Planned Hand Line                 | — Interstate or US Highway | ⬜ Federal                   |              |

