

# IAP

White River  
WA-OWF-000319  
1522 Acres

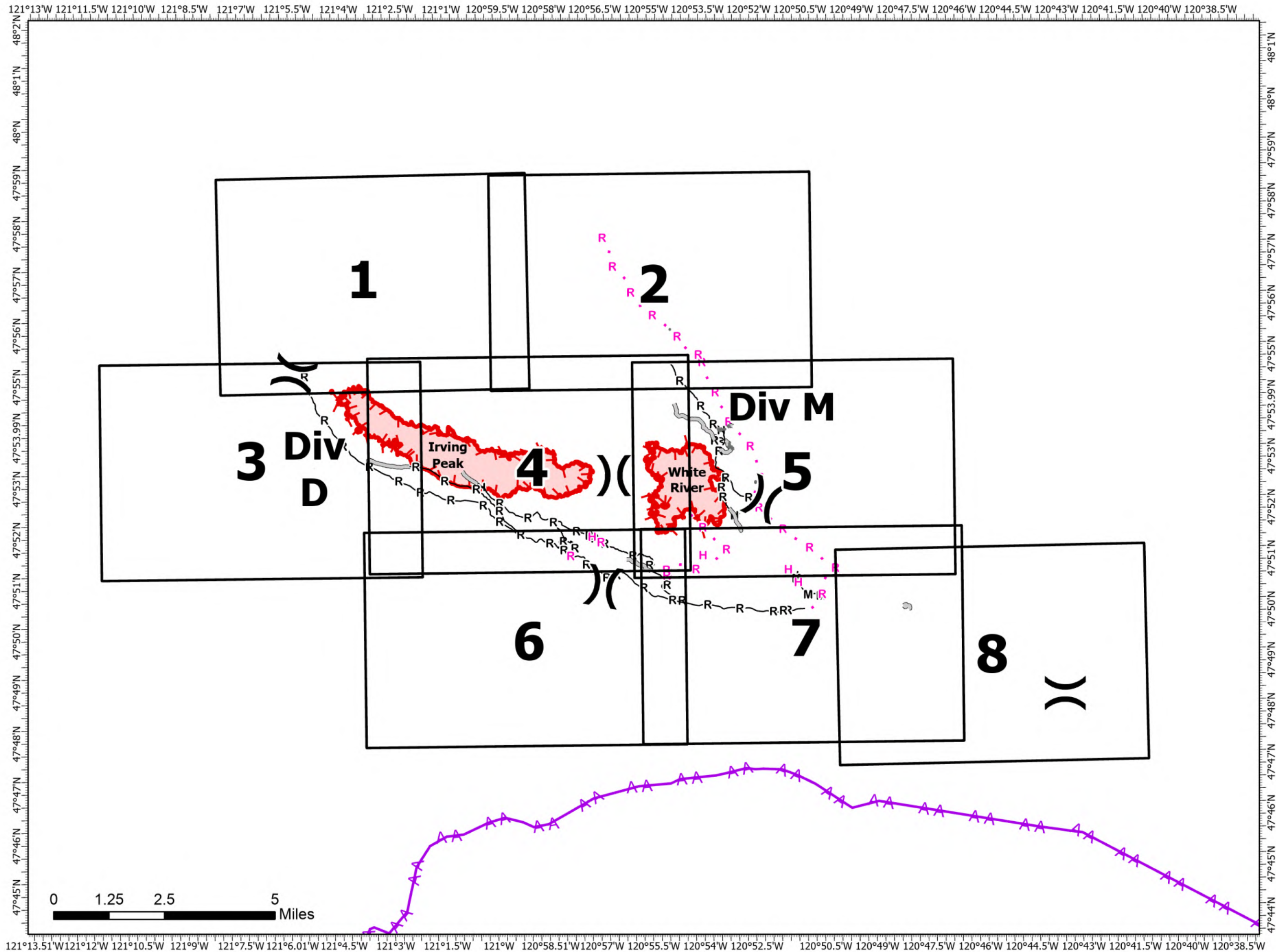
Irving Peak  
WA-OWF-000315  
3018 Acres

Acres as of: 09/05/2022 2134

- ( Division Break
- H Completed Hand Line
- M Completed Mixed Construction Line
- R Completed Road as Line
- H Planned Hand Line
- R Planned Road as Line
- Access or Improved Road
- Other
- AA Aerial Hazard
- Uncontained



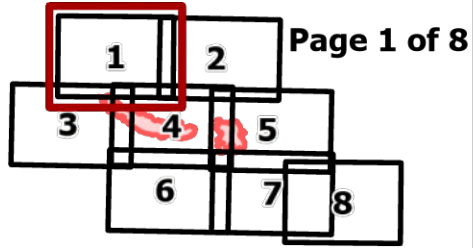
Map Updated:  
9/6/2022 @ 2009  
North American 1983 Datum. LatLong Grid















White River  
WA-OWF-000319  
1522 Acres

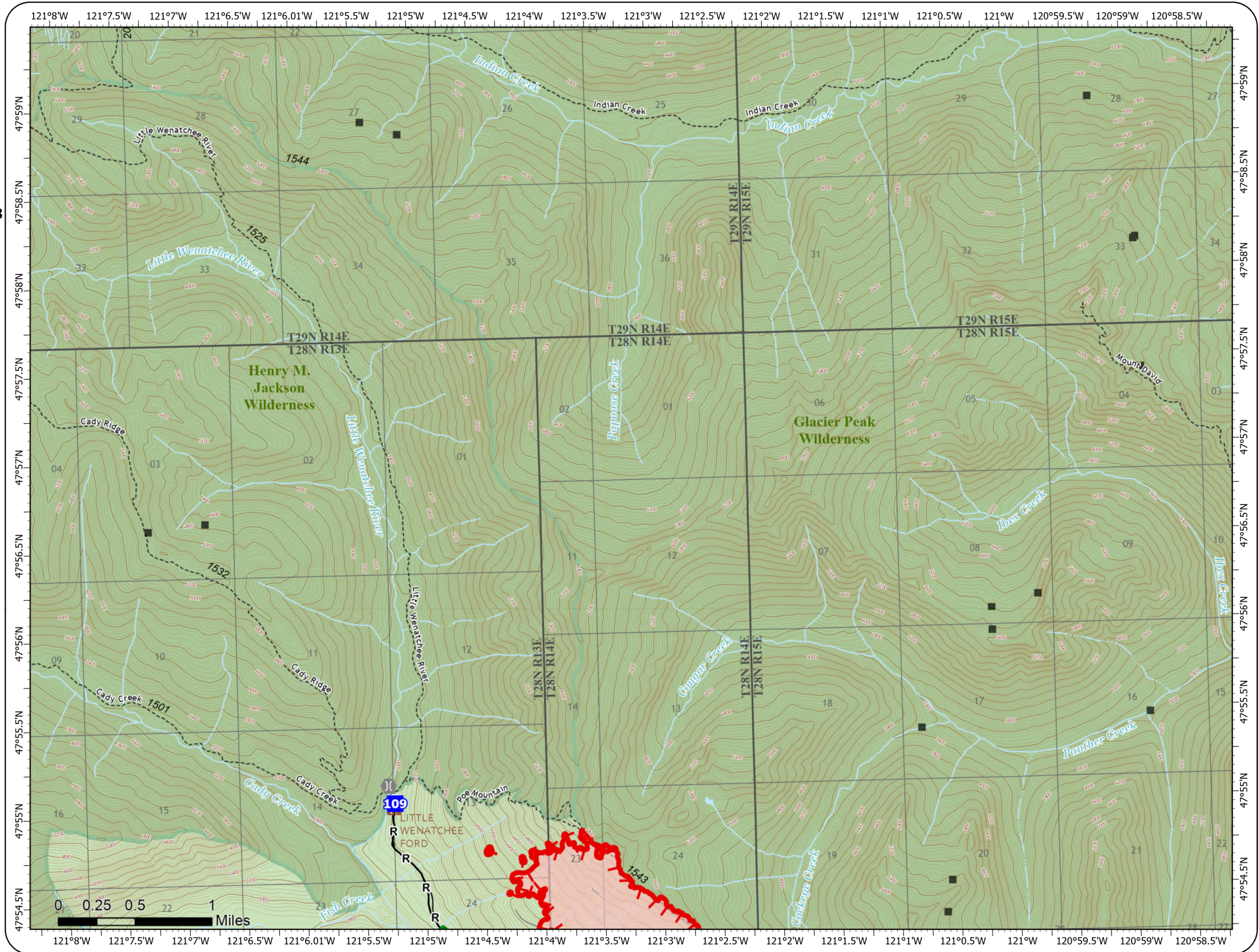
Irving Peak  
WA-OWF-000318  
3018 Acres

Acres as of: 09/05/2022 2134



Page 1 of 8

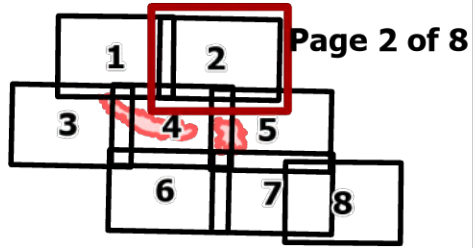
-  Drop Point
-  Bridge
-  Repair Point
-  Completed Road as Line
-  Uncontained
-  Structures
-  Trailhead
-  Open Roads
-  Other Roads
-  Trail
-  Wilderness
-  U.S. Forest Service



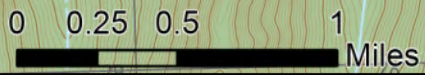
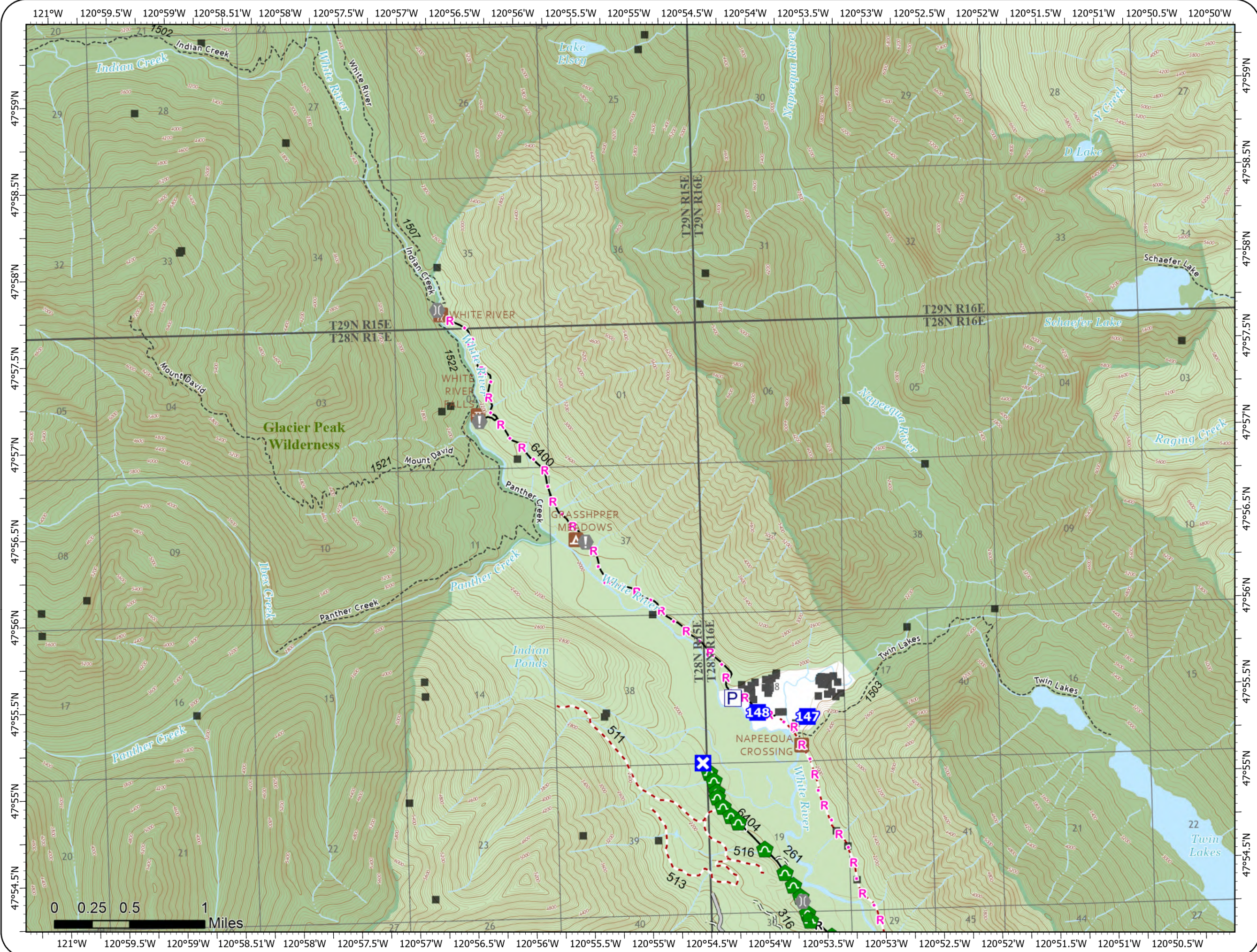
White River  
WA-OWF-000319  
1522 Acres

Irving Peak  
WA-OWF-000318  
3018 Acres

Acres as of: 09/05/2022 2134



- Pump
- Drop Point
- Closure
- Value at Risk
- Bridge
- Repair Point
- Culvert
- Completed Road as Line
- Planned Road as Line
- Access or Improved Road
- Other
- Structures
- Campground
- Day Use/Picnic
- Trailhead
- Open Roads
- Closed Roads
- Decommissioned Roads
- Trail
- Wilderness
- Private
- U.S. Forest Service

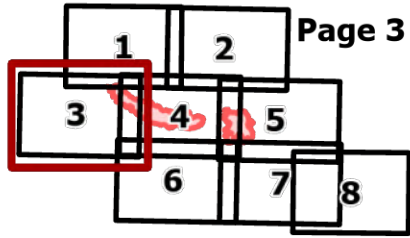


White River  
WA-OWF-000319  
1522 Acres

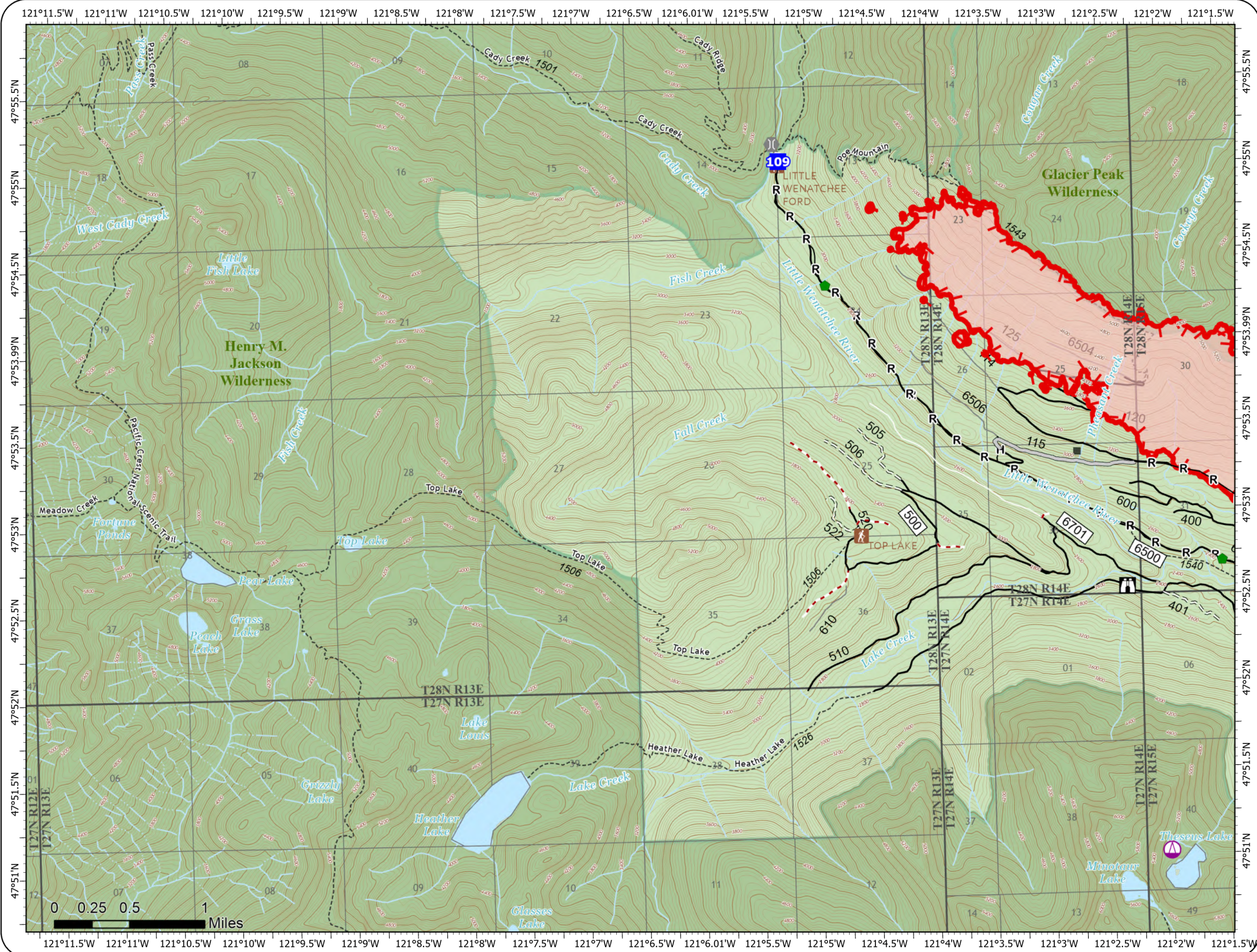
Irving Peak  
WA-OWF-000318  
3018 Acres

Acres as of: 09/05/2022 2134

Page 3 of 8



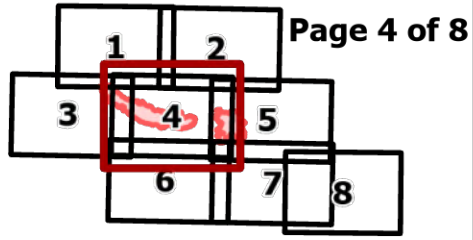
- Sling Site
- Drop Point
- Lookout
- Bridge
- Repair Point
- Completed Hand Line
- Completed Road as Line
- Access or Improved Road
- Uncontained
- Structures
- Trailhead
- Open Roads
- Closed Roads
- Decommissioned Roads
- Other Roads
- Trail
- Wilderness
- U.S. Forest Service



White River  
WA-OWF-000319  
1522 Acres

Irving Peak  
WA-OWF-000318  
3018 Acres

Acres as of: 09/05/2022 2134

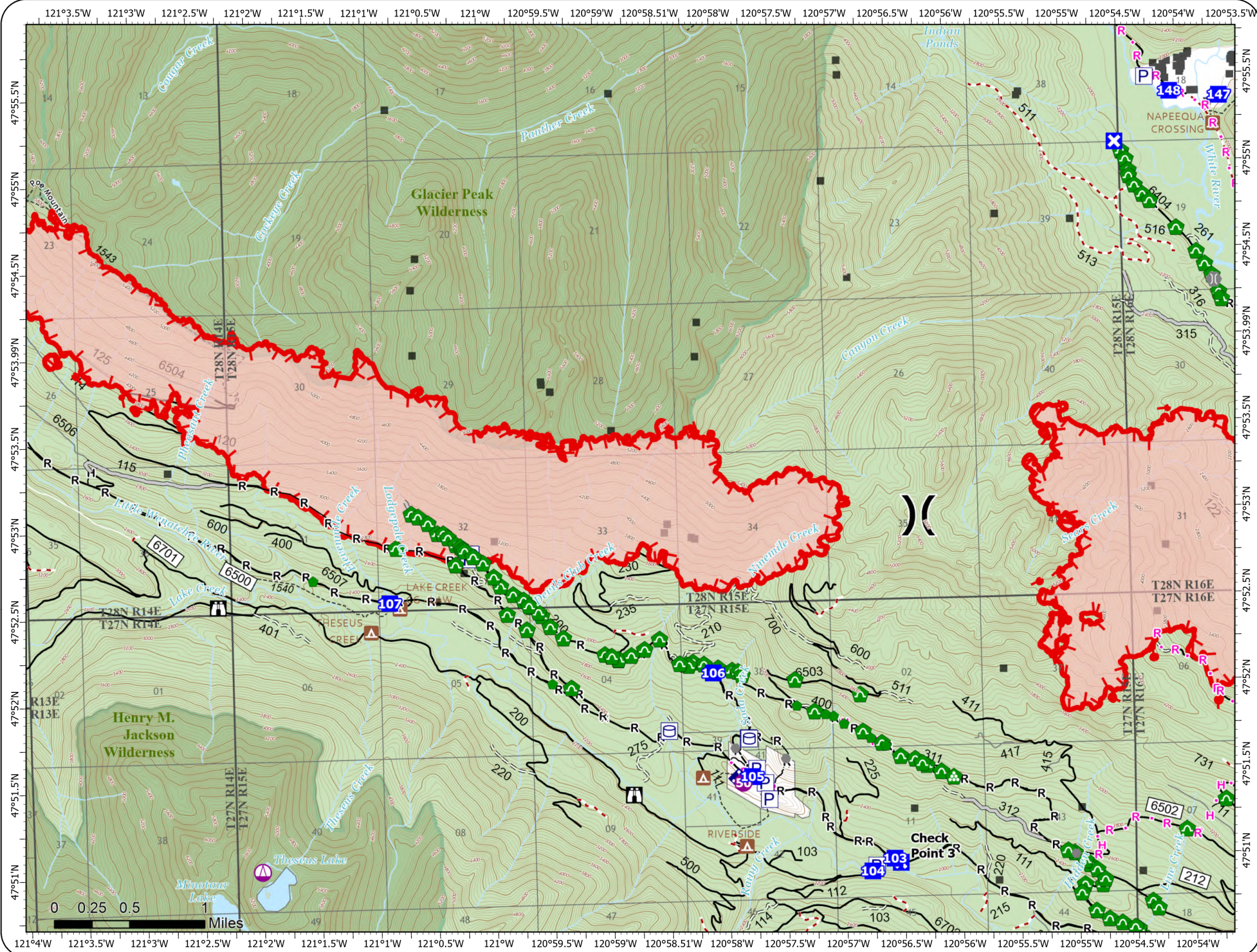


Page 4 of 8

- Pump
- Water Tank
- Helispot
- Sling Site
- Division Break
- Drop Point
- Closure
- Lookout
- Other
- Bridge
- Repair Point
- Landing or Log Deck
- Culvert
- Mobile Weather Unit
- Completed Hand Line
- Completed Road as Line
- Planned Hand Line
- Planned Road as Line
- Access or Improved Road
- Other
- Uncontained
- Structures
- Campground
- Open Roads
- Closed Roads
- Decommissioned Roads
- Other Roads
- Trail
- Wilderness
- Private
- U.S. Forest Service



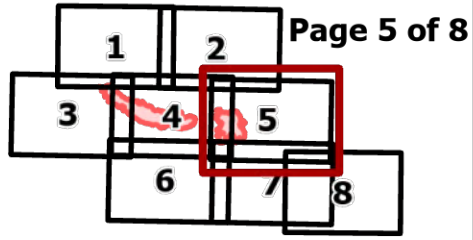
9/6/2022 2020



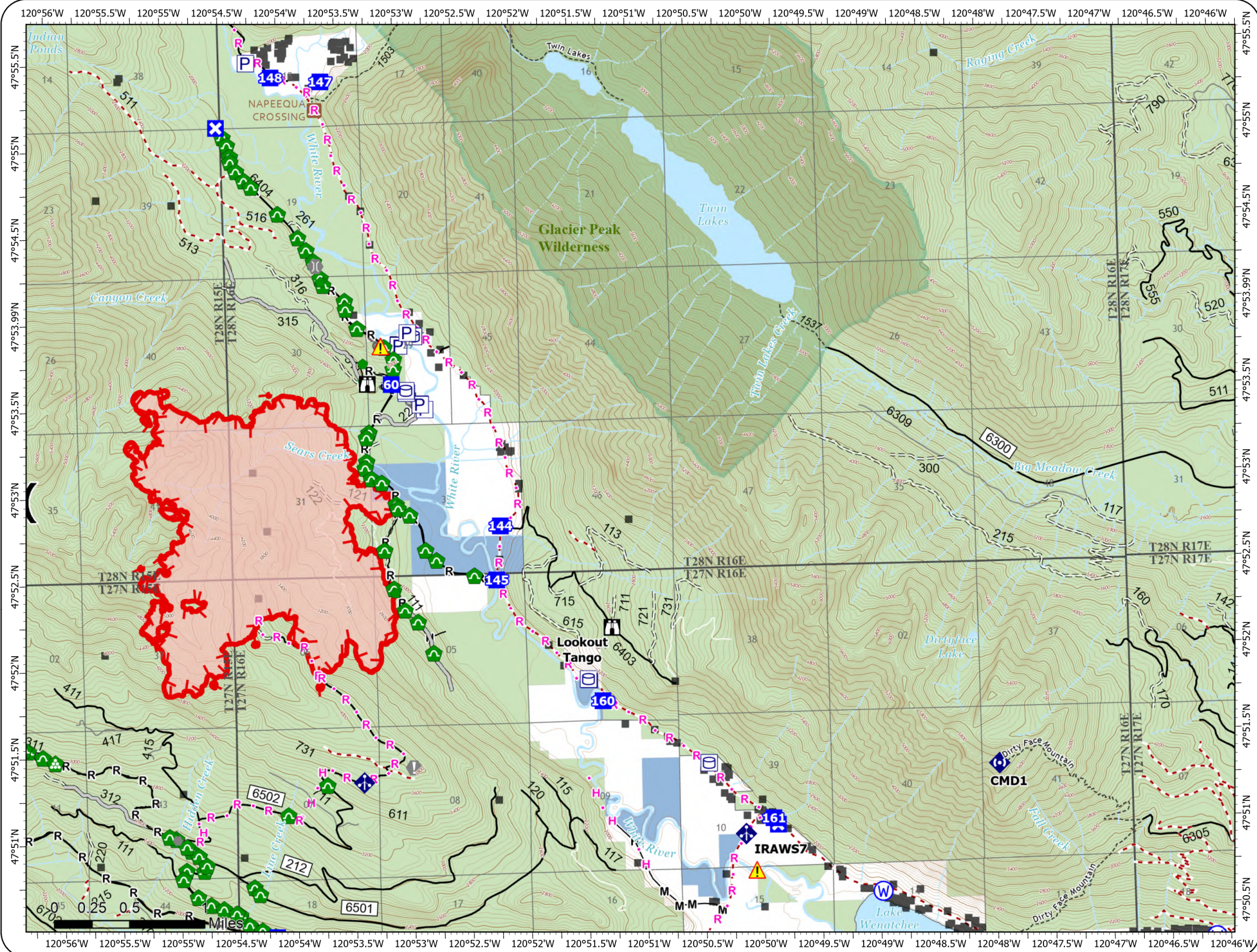
White River  
WA-OWF-000319  
1522 Acres

Irving Peak  
WA-OWF-000318  
3018 Acres

Acres as of: 09/05/2022 2134



- Pump
- Water Tank
- Division Break
- Drop Point
- Closure
- Lookout
- Value at Risk
- Other
- Gate
- Bridge
- Repair Point
- Landing or Log Deck
- Culvert
- Mobile Weather Unit
- Repeater
- Hazard
- Water Source
- Completed Hand Line
- Completed Mixed Construction Line
- Completed Road as Line
- Planned Hand Line
- Planned Road as Line
- Access or Improved Road
- Other
- Uncontained
- Structures
- Campground
- Open Roads
- Closed Roads
- Decommissioned Roads
- Other Roads
- Trail
- Wilderness
- Private
- State
- U.S. Forest Service

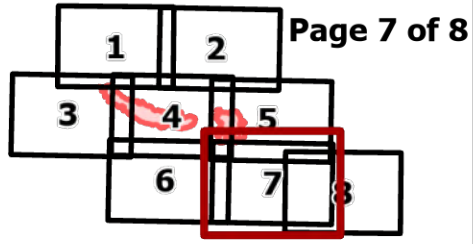




White River  
WA-OWF-000319  
1522 Acres

Irving Peak  
WA-OWF-000318  
3018 Acres

Acres as of: 09/05/2022 2134

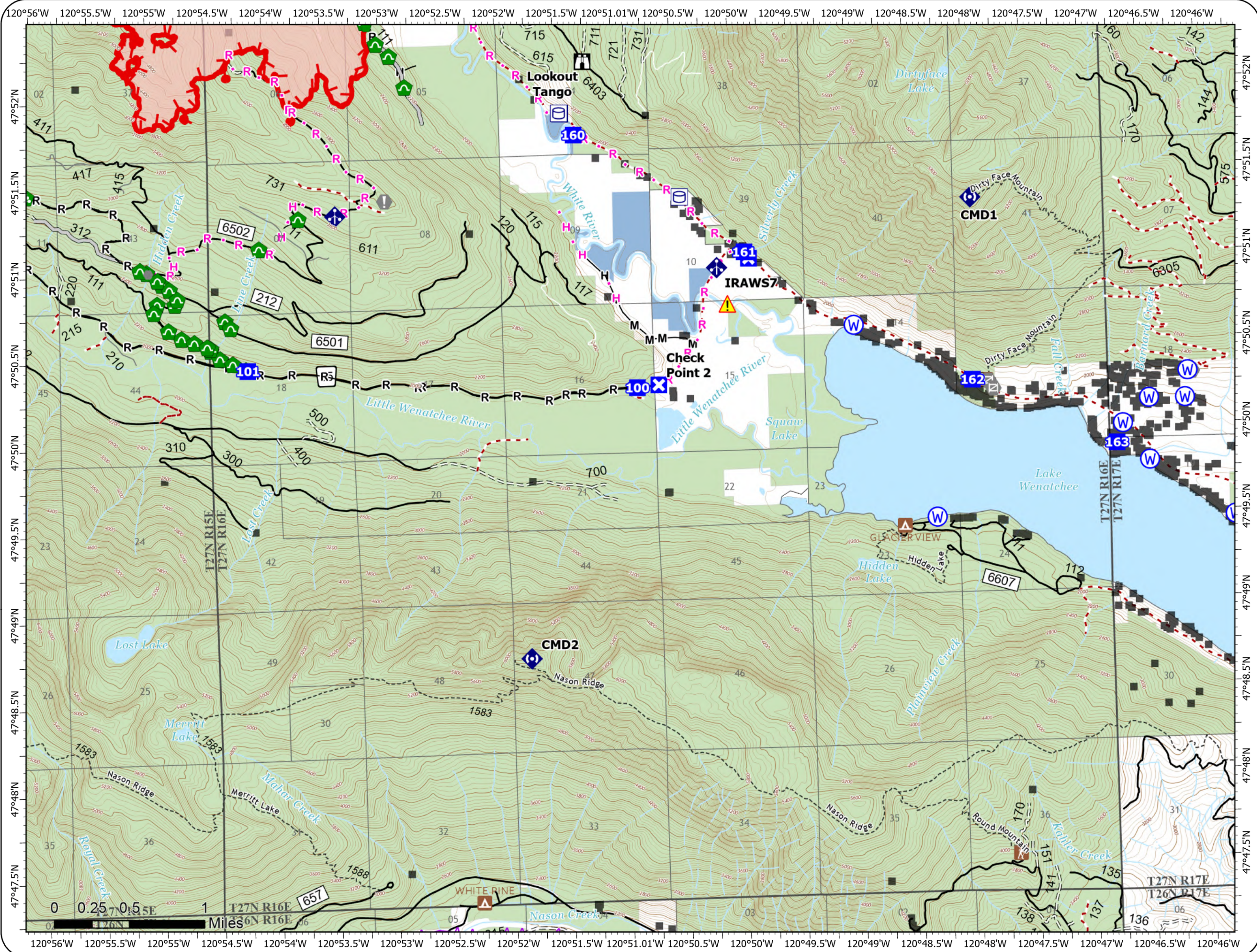


Page 7 of 8

- Pump
- Water Tank
- Drop Point
- Closure
- Lookout
- Value at Risk
- Other
- Gate
- Repair Point
- Landing or Log Deck
- Culvert
- Mobile Weather Unit
- Repeater
- Hazard
- Water Source
- Completed Hand Line
- Completed Mixed Construction Line
- Completed Road as Line
- Planned Hand Line
- Planned Road as Line
- Access or Improved Road
- Aerial Hazard
- Uncontained
- Structures
- Campground
- Trailhead
- Open Roads
- Closed Roads
- Decommissioned Roads
- Other Roads
- Trail
- Private
- State
- U.S. Forest Service



9/6/2022 2022



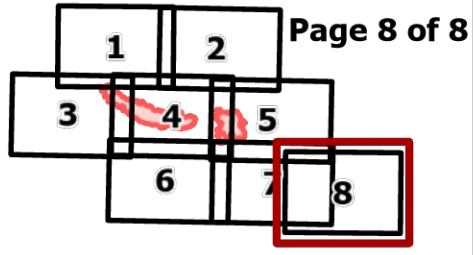
0 0.25 0.5 1 Miles



White River  
WA-OWF-000319  
1522 Acres

Irving Peak  
WA-OWF-000318  
3018 Acres

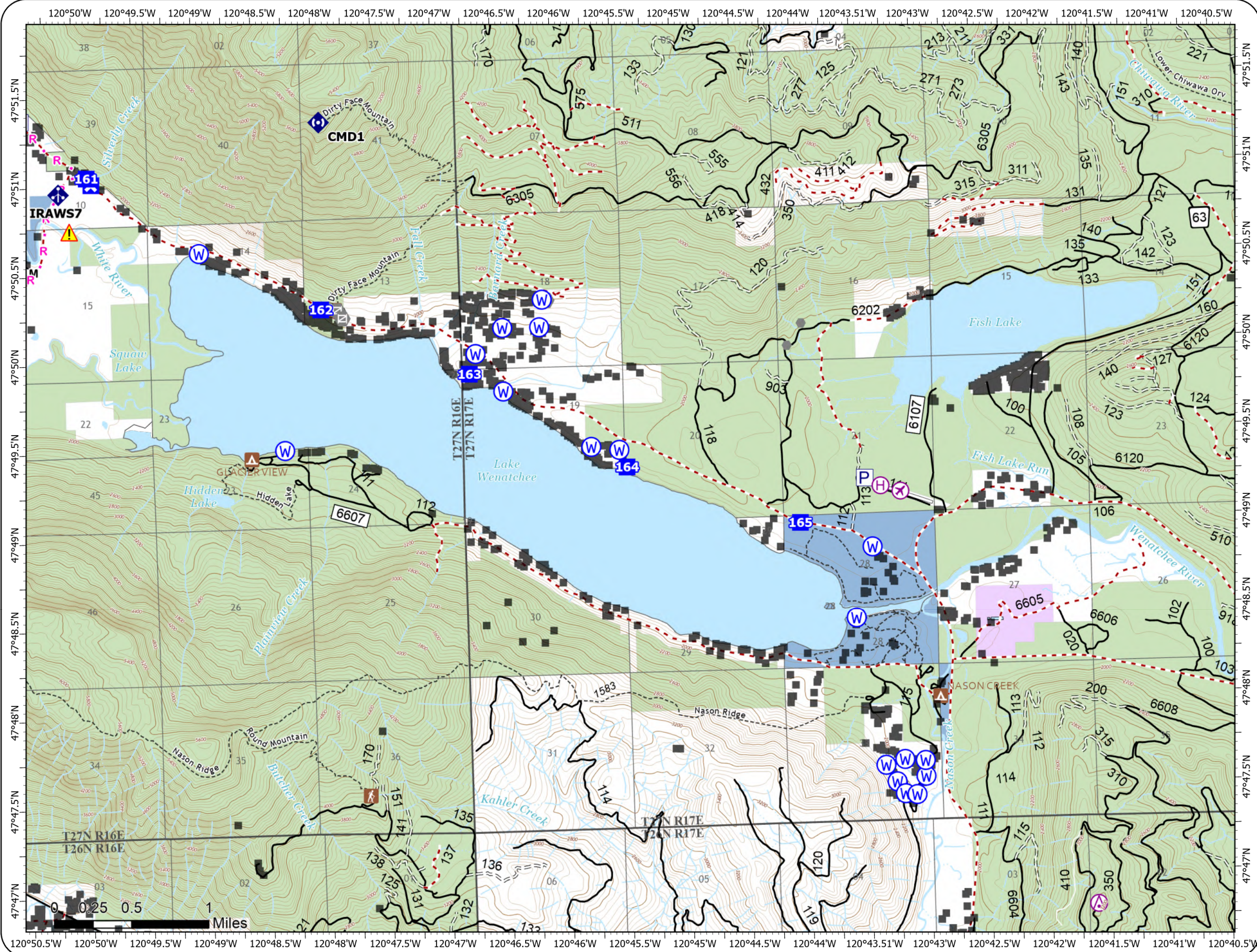
Acres as of: 09/05/2022 2134



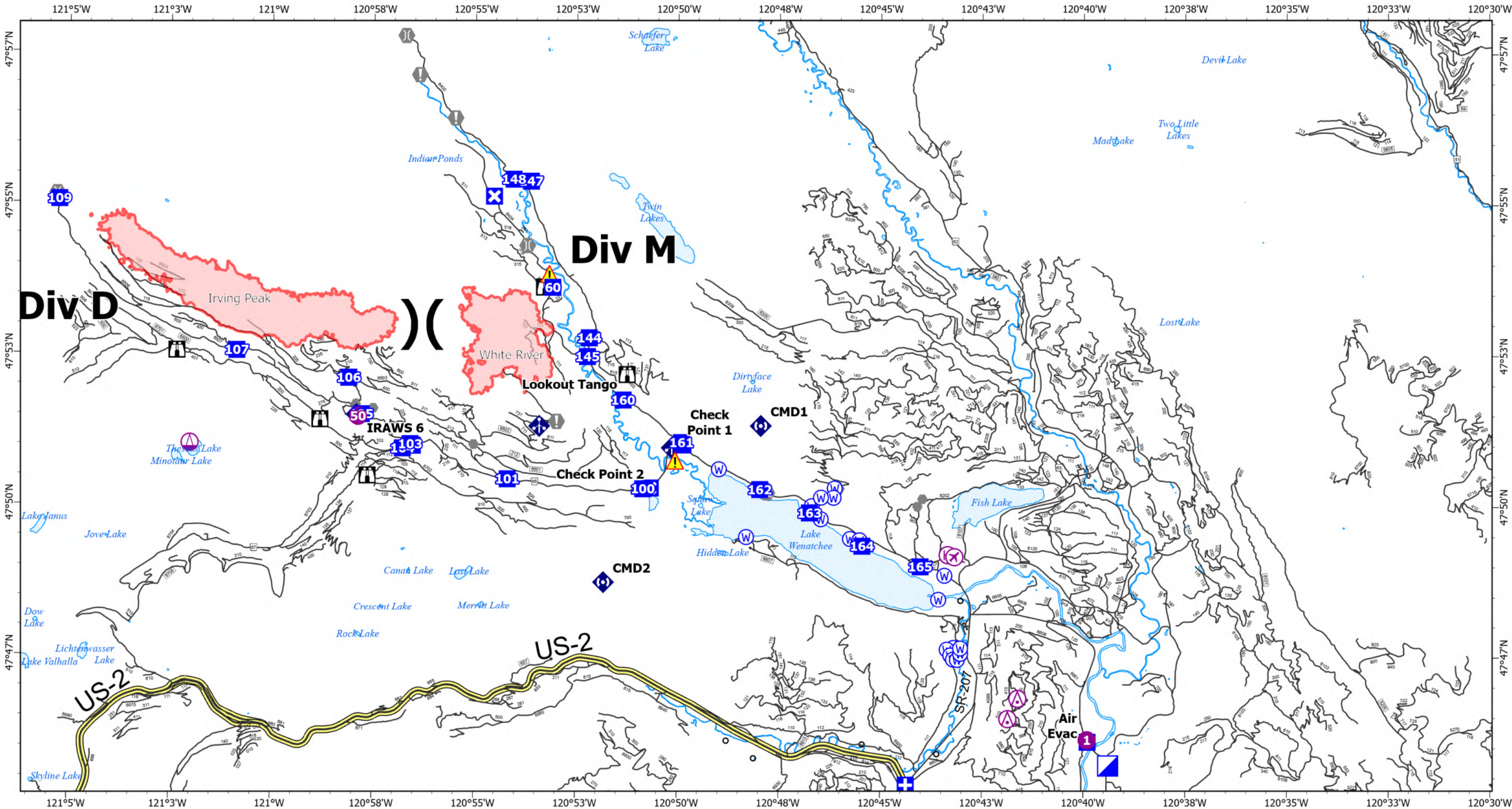
- Pump
- Water Tank
- Aerial Hazard
- Airstrip or Airport
- Helibase
- Drop Point
- Closure
- Other
- Gate
- Mobile Weather Unit
- Repeater
- Hazard
- Water Source
- Completed Mixed Construction Line
- Planned Road as Line
- Access or Improved Road
- Aerial Hazard
- Structures
- Campground
- Trailhead
- Open Roads
- Closed Roads
- Decommissioned Roads
- Trail
- Local Government
- Private
- State
- U.S. Forest Service



9/6/2022 2022



# Transportation



**White River**  
WA-OWF-000319  
1522 acres

**Irving Peak**  
WA-OWF-000315  
3018 acres

Map Updated: 9/6/2022  
Acres as of 09/05/2022 2134

North American 1983 HARN Datum.  
LatLong Grid

- |                     |                |               |                     |              |
|---------------------|----------------|---------------|---------------------|--------------|
| Aerial Hazard       | Sling Site     | Drop Point    | Other               | Repeater     |
| Airstrip or Airport | Division Break | Checkpoint    | Gate                | Hazard       |
| Helispot            | Medical        | Lookout       | Bridge              | Water Source |
| Helibase            | ICP            | Value at Risk | Mobile Weather Unit |              |

