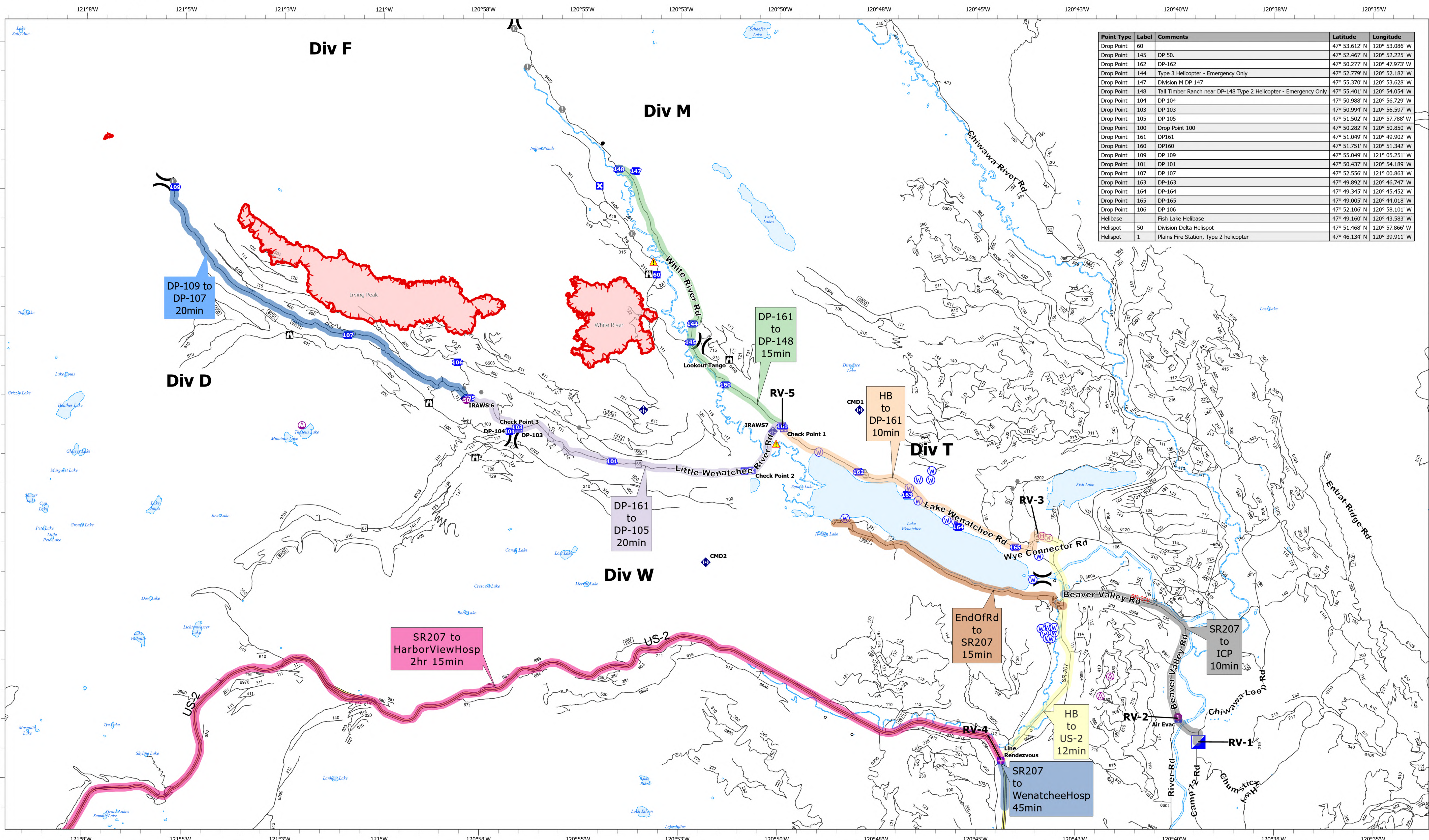


Medical Transportation



Point Type	Label	Comments	Latitude	Longitude
Drop Point	60		47° 53.612' N	120° 53.086' W
Drop Point	145	DP 50.	47° 52.467' N	120° 52.225' W
Drop Point	162	DP-162	47° 50.277' N	120° 47.973' W
Drop Point	144	Type 3 Helicopter - Emergency Only	47° 52.779' N	120° 52.182' W
Drop Point	147	Division M DP 147	47° 55.370' N	120° 53.628' W
Drop Point	148	Tall Timber Ranch near DP-148 Type 2 Helicopter - Emergency Only	47° 55.401' N	120° 54.054' W
Drop Point	104	DP 104	47° 50.988' N	120° 56.729' W
Drop Point	103	DP 103	47° 50.994' N	120° 56.597' W
Drop Point	105	DP 105	47° 51.502' N	120° 57.788' W
Drop Point	100	Drop Point 100	47° 50.282' N	120° 50.850' W
Drop Point	161	DP161	47° 51.049' N	120° 49.902' W
Drop Point	160	DP160	47° 51.751' N	120° 51.342' W
Drop Point	109	DP 109	47° 55.049' N	121° 05.251' W
Drop Point	101	DP 101	47° 50.437' N	120° 54.189' W
Drop Point	107	DP 107	47° 52.556' N	121° 00.863' W
Drop Point	163	DP-163	47° 49.892' N	120° 46.747' W
Drop Point	164	DP-164	47° 49.345' N	120° 45.452' W
Drop Point	165	DP-165	47° 49.005' N	120° 44.018' W
Drop Point	106	DP 106	47° 52.106' N	120° 58.101' W
Helibase		Fish Lake Helibase	47° 49.160' N	120° 43.583' W
Helispot	50	Division Delta Helispot	47° 51.468' N	120° 57.866' W
Helispot	1	Plains Fire Station, Type 2 helicopter	47° 46.134' N	120° 39.911' W

White River
WA-OWF-000319
1,194 acres
Acres as of 09/01/2022 2144
Map Updated: 9/2/2022

Irving Peak
WA-OWF-000318
2,381 acres

- Aerial Hazard
- Sling Site
- Drop Point
- Other
- Repeater
- Uncontained Roads
- Airstrip or Airport
- Division Break
- Closure
- Gate
- Hazard
- Water Source
- Helispot
- Medical
- Lookout
- Bridge
- Mobile Weather Unit
- Value at Risk
- ICP
- Contained Roads