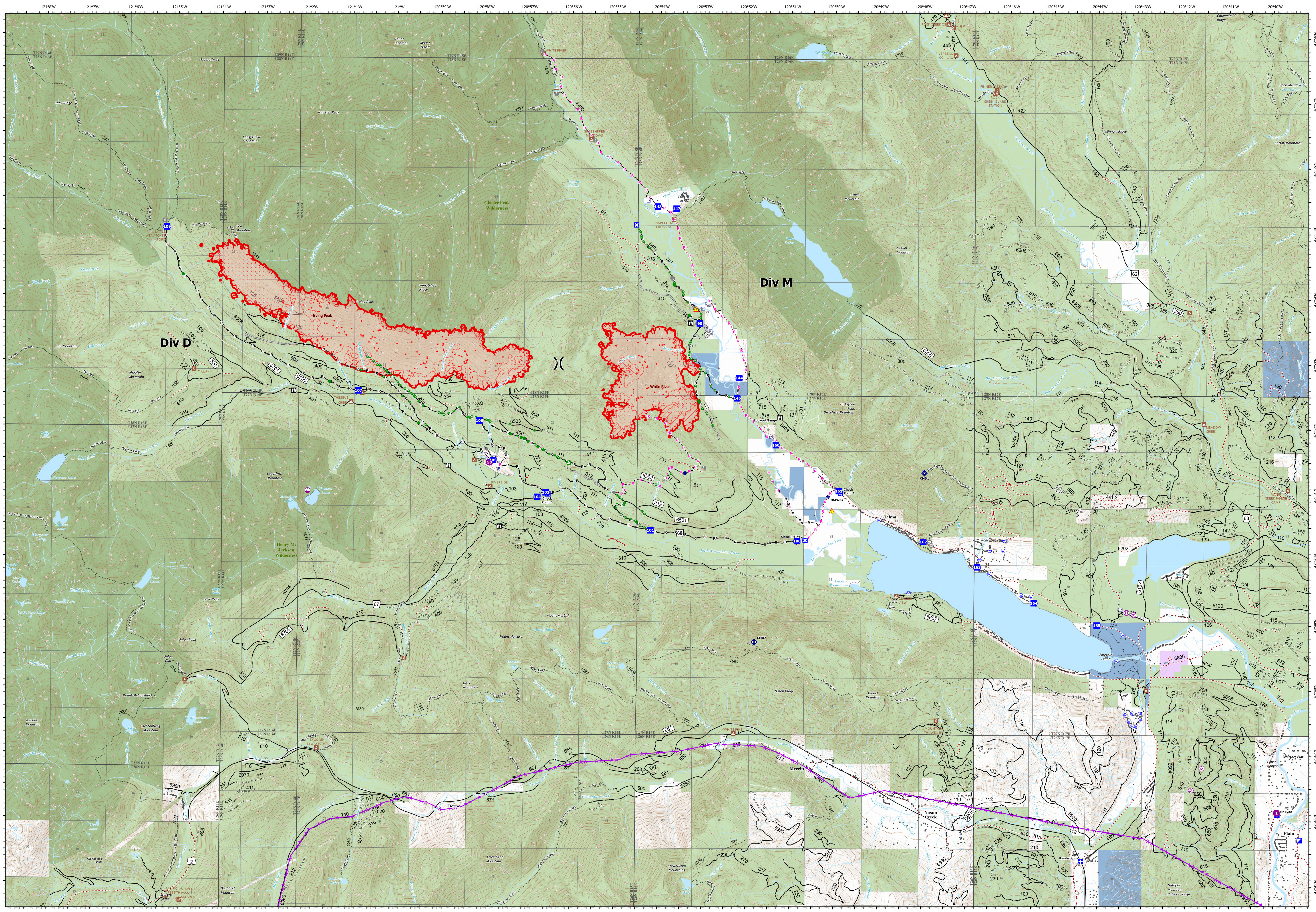


Operations



White River 1522 acres
Irving Peak 3018 acres
 WA-OWF-000319 WA-OWF-000315

Acres as of 09/05/2022 2134
 Map Updated: 9/6/2022 8:24 PM

- | | | | | | | | | |
|---------------------------|------------------|-------------------------|-----------------------|-----------------------|-------------------------------------|---------------------------|-------------------|-----------------------|
| ● IR Isolated Heat Source | ● Helispot | ● Incident Command Post | ● Other | ● Culvert | ● Pump | ● Planned Hand Line | ● Structures | ● Wilderness |
| ● IR Intense Heat | ● Helibase | ● Drop Point | ● Gate | ● Mobile Weather Unit | ● Water Tank | ● Planned Road as Line | ● Campground | ● Local Government |
| ● IR Scattered Heat | ● Sling Site | ● Closure | ● Bridge | ● Repeater | ● Completed Hand Line | ● Access or Improved Road | ● Day Use/Picnic | ● Private |
| ● Aerial Hazard | ● Division Break | ● Lookout | ● Repair Point | ● Hazard | ● Completed Mixed Construction Line | ● Other | ● SKI AREA ALPINE | ● State |
| ● Airstrip or Airport | ● Medical | ● Value at Risk | ● Landing or Log Deck | ● Water Source | ● Completed Road as Line | ● Aerial Hazard | ● Trailhead | ● U.S. Forest Service |

