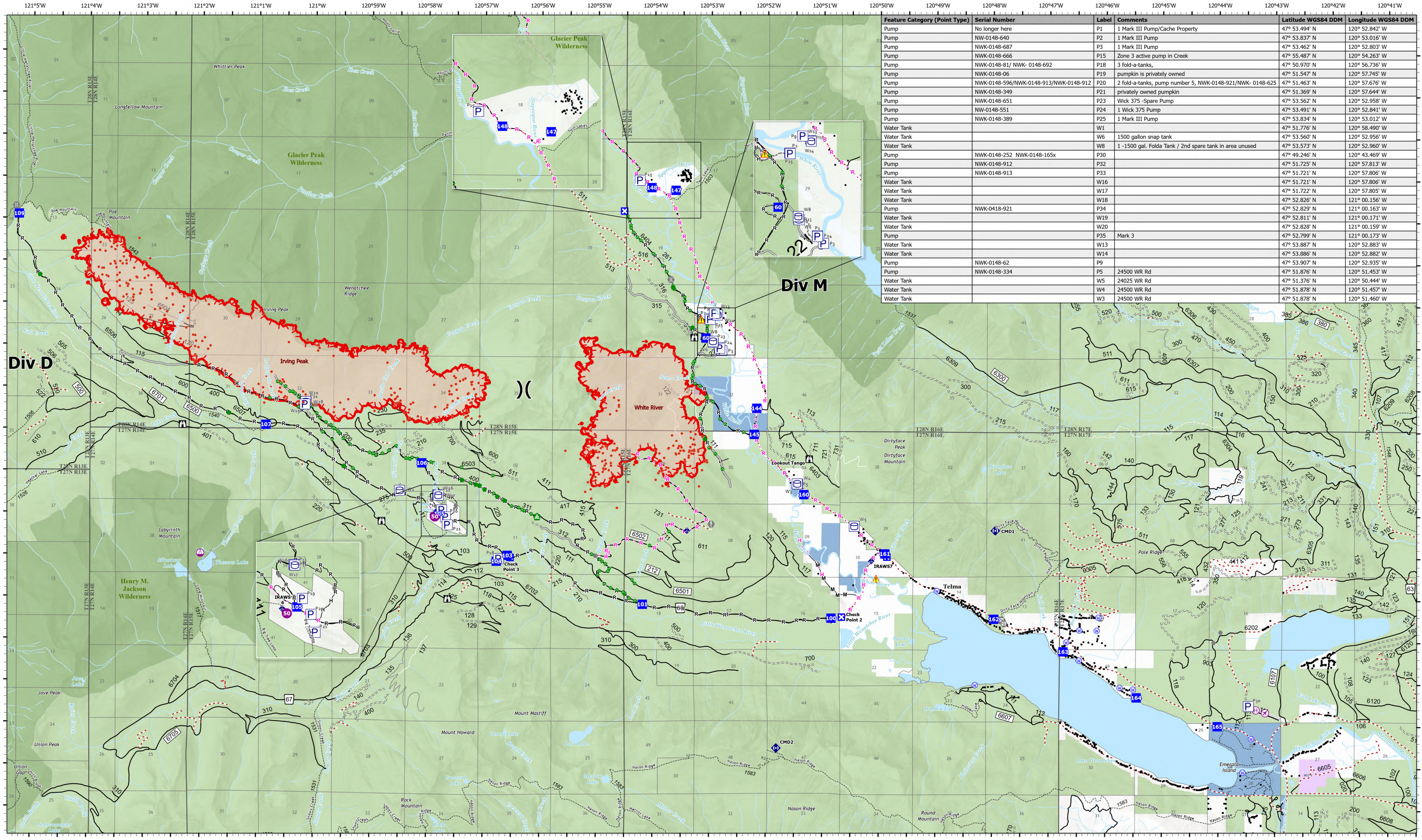


Accountable Property



Feature Category (Point Type)	Serial Number	Label	Comments	Latitude WGS84 DDM	Longitude WGS84 DDM
Pump	No longer here	P1	1 Mark III Pump/Cache Property	47° 53.494' N	120° 52.842' W
Pump	NW-0148-640	P2	1 Mark III Pump	47° 53.837' N	120° 53.016' W
Pump	NWK-0148-687	P3	1 Mark III Pump	47° 53.462' N	120° 52.803' W
Pump	NWK-0148-666	P15	Zone 3 active pump in Creek	47° 55.487' N	120° 54.263' W
Pump	NWK-0148-81/ NWK- 0148-692	P18	3 fold-a-tanks,	47° 50.970' N	120° 56.736' W
Pump	NWK-0148-06	P19	pumpkin is privately owned	47° 51.547' N	120° 57.745' W
Pump	NWK-0148-596/NWK-0148-913/NWK-0148-912	P20	2 fold-a-tanks, pump number 5, NWK-0148-921/NWK- 0148-625	47° 51.463' N	120° 57.676' W
Pump	NWK-0148-349	P21	privately owned pumpkin	47° 51.369' N	120° 57.644' W
Pump	NWK-0148-651	P23	Wick 375 -Spare Pump	47° 53.562' N	120° 52.958' W
Pump	NW-0148-551	P24	1 Wick 375 Pump	47° 53.491' N	120° 52.841' W
Pump	NWK-0148-389	P25	1 Mark III Pump	47° 53.834' N	120° 53.012' W
Water Tank		W1		47° 51.776' N	120° 58.490' W
Water Tank		W6	1500 gallon snap tank	47° 53.560' N	120° 52.956' W
Water Tank		W8	1 -1500 gal. Folda Tank / 2nd spare tank in area unused	47° 53.573' N	120° 52.960' W
Pump	NWK-0148-252 NWK-0148-165x	P30		47° 49.246' N	120° 43.469' W
Pump	NWK-0148-912	P32		47° 51.725' N	120° 57.813' W
Pump	NWK-0148-913	P33		47° 51.721' N	120° 57.806' W
Water Tank		W16		47° 51.721' N	120° 57.806' W
Water Tank		W17		47° 51.722' N	120° 57.805' W
Water Tank		W18		47° 52.826' N	121° 00.156' W
Pump	NWK-0148-921	P34		47° 52.829' N	121° 00.163' W
Water Tank		W19		47° 52.811' N	121° 00.171' W
Water Tank		W20		47° 52.828' N	121° 00.159' W
Pump		P35	Mark 3	47° 52.799' N	121° 00.173' W
Water Tank		W13		47° 53.887' N	120° 52.883' W
Water Tank		W14		47° 53.886' N	120° 52.882' W
Pump	NWK-0148-62	P9		47° 53.907' N	120° 52.935' W
Pump	NWK-0148-334	P5	24500 WR Rd	47° 51.876' N	120° 51.453' W
Water Tank		W5	24025 WR Rd	47° 51.376' N	120° 50.444' W
Water Tank		W4	24500 WR Rd	47° 51.878' N	120° 51.457' W
Water Tank		W3	24500 WR Rd	47° 51.878' N	120° 51.460' W

White River
WA-OWF-000319
1522 acres

Irving Peak
WA-OWF-000315
3018 acres

Acres as of 09/05/2022 2134
Map Updated: 9/6/2022 8:23 PM

- ⊙ Airstrip or Airport
- ⊠ Closure
- ⬢ Repair Point
- ⊙ Water Source
- ⊙ Helibase
- ⊙ Lookout
- ⬢ Landing or Log Deck
- ⬢ Structures
- ⊙ Helispot
- ⊙ Value at Risk
- ⬢ Culvert
- ⬢ U.S. Forest Service
- ⊙ Sling Site
- ⊙ Other
- ⬢ Mobile Weather Unit
- ⬢ Private
- ⊙ Division Break
- ⊙ Gate
- ⬢ Repeater
- ⬢ State
- ⬢ Drop Point
- ⬢ Bridge
- ⬢ Hazard
- ⬢ Completed Hand Line
- ⬢ Completed Mixed Construction Line
- ⬢ Completed Road as Line
- ⬢ Planned Hand Line
- ⬢ VIIRS Thermal Hotspots and Fire Activity
- ⬢ Access or Improved Road
- ⬢ Other
- ⬢ Wildfire Daily Fire Perimeter

