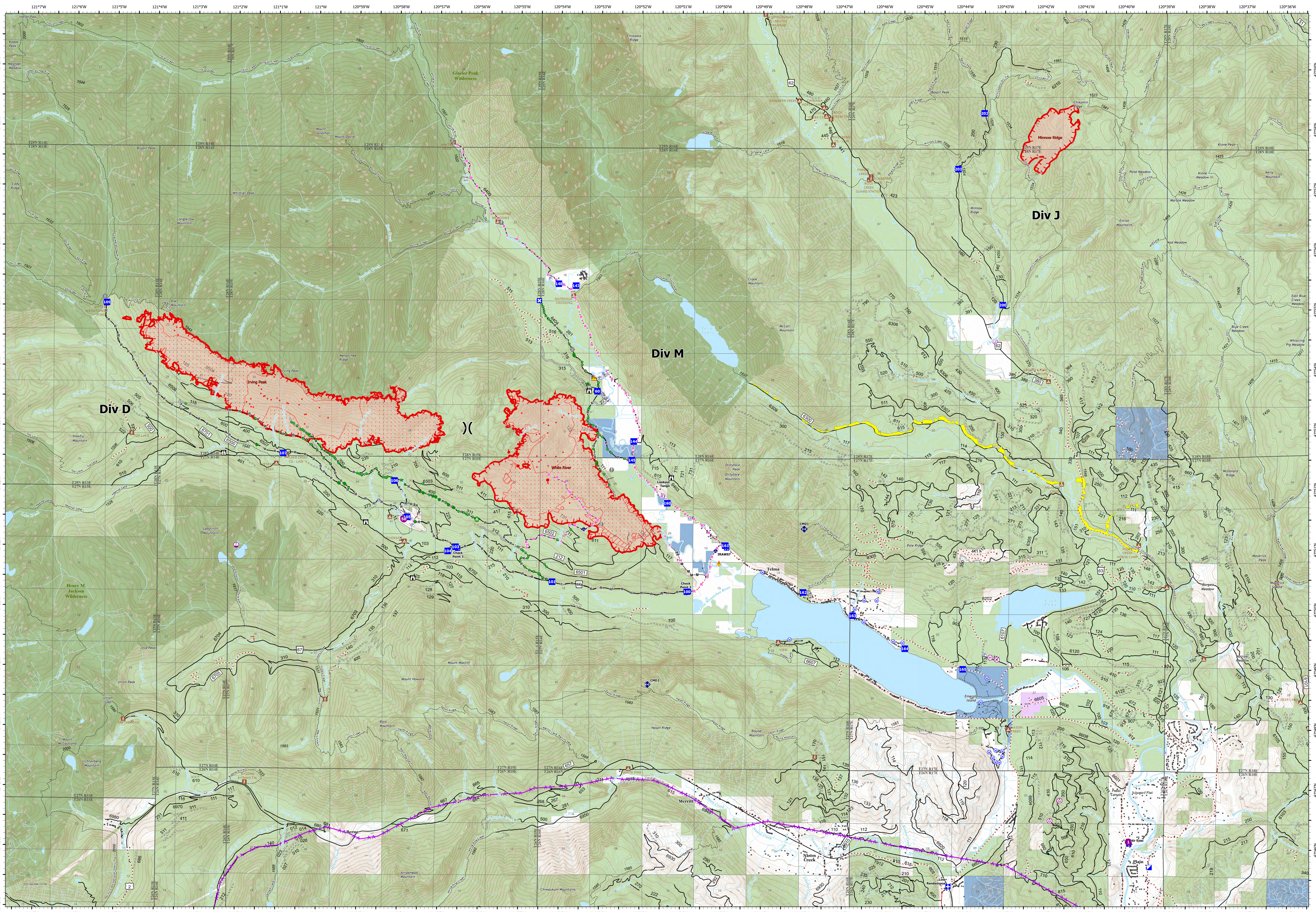


Operations -



White River **Irving Peak** **Minnow Ridge**
 WA-OWF-000319 WA-OWF-000315 WA-OWF-000479
 3,184 acres 3,226 acres 502 acres

Acres as of 9/13/22 1127 PDT
 Map Updated: 9/13/2022 3:49 PM

<ul style="list-style-type: none"> ● IR Isolated Heat Source ■ IR Intense Heat ○ IR Scattered Heat ○ Aerial Hazard ○ Airstrip or Airport ● Helispot 	<ul style="list-style-type: none"> ○ Helibase ○ Sling Site ○ Unimproved Landing Area ○ Value at Risk ○ Other ○ Incident Command Post 	<ul style="list-style-type: none"> ■ Drop Point ■ Closure ■ Lookout ■ Culvert ■ Mobile Weather Unit ■ Repeater 	<ul style="list-style-type: none"> ○ Bridge ○ Repair Point ○ Landing or Log Deck ○ Water Source ○ Pump ○ Water Tank ○ Completed Hand Line ○ Completed Mixed Construction Line 	<ul style="list-style-type: none"> ▲ Hazard ▲ Campground ▲ Day Use/Picnic ▲ Community Protection Line ▲ Wilderness 	<ul style="list-style-type: none"> — Completed Road as Line — Planned Hand Line — Planned Road as Line — Access or Improved Road — Other — Aerial Hazard 	<ul style="list-style-type: none"> ■ Structures ■ Campground ■ Day Use/Picnic ■ Trailhead ■ Wilderness 	<ul style="list-style-type: none"> ■ Local Government ■ Private ■ State ■ U.S. Forest Service
--	--	--	---	---	--	---	---