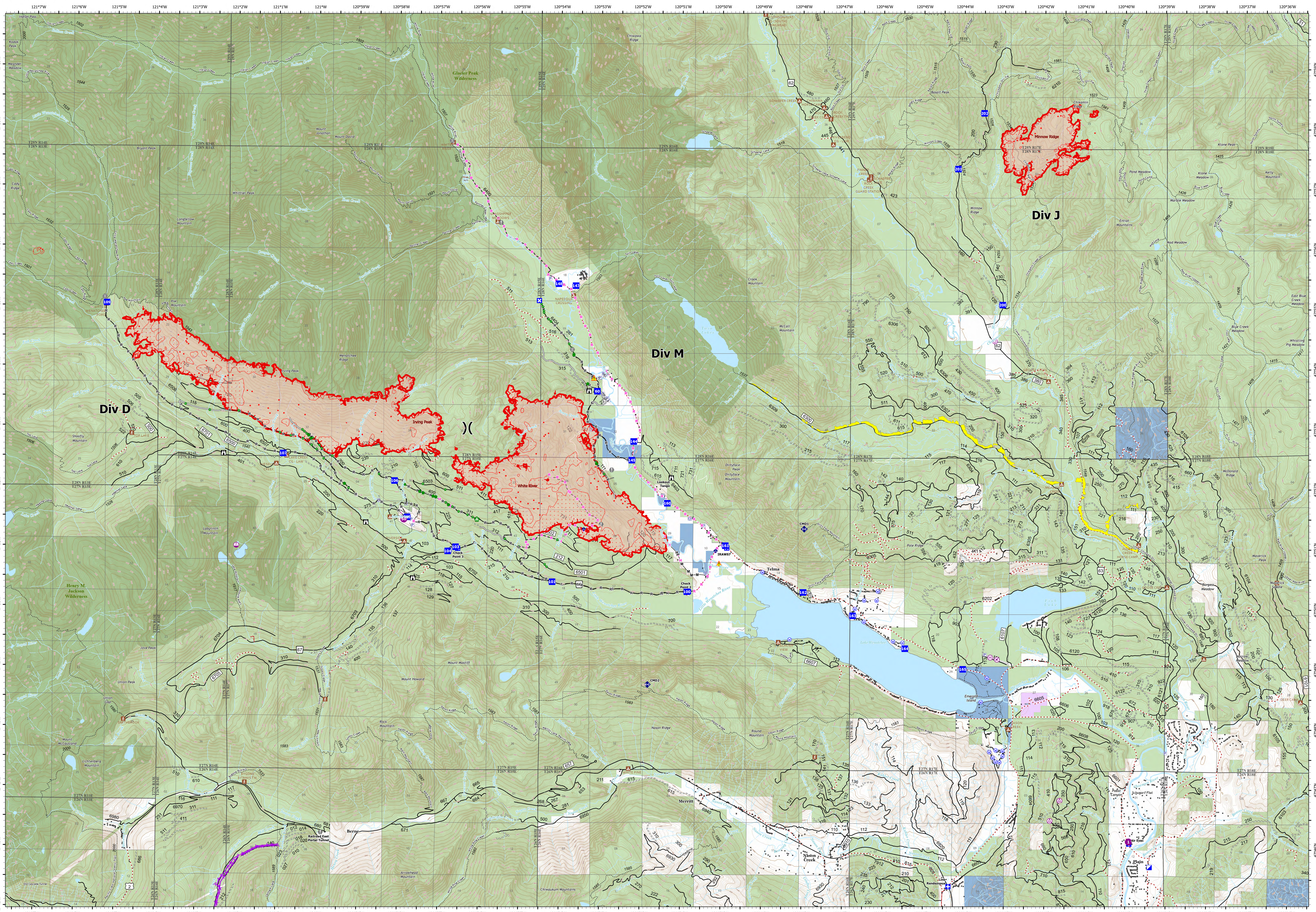


Operations -



White River **Irving Peak** **Minnow Ridge**
 WA-OWF-000319 WA-OWF-000315 WA-OWF-000479
 3,605 acres 3,487 acres 932 acres

Acres as of 9/20/22 2002
 Map Updated: 9/21/2022 9:45 AM

- | | | | | | | | |
|---------------------------|---------------------------|-----------------------|-----------------------|----------------|-------------------------------------|-----------------------------|-----------------------|
| ● IR Isolated Heat Source | ● Helibase | ● Drop Point | ● Bridge | ● Hazard | — Completed Road as Line | ■ Structures | — Local Government |
| ● IR Intense Heat | ● Sling Site | ● Closure | ● Repair Point | ● Water Source | — Planned Hand Line | ■ Campground | — Private |
| ● IR Scattered Heat | ● Unimproved Landing Area | ● Lookout | ● Landing or Log Deck | ● Pump | — Planned Road as Line | ■ Day Use/Picnic | — State |
| ● Aerial Hazard | ● Value at Risk | ● Culvert | ● Water Tank | ● Water Tank | — Access or Improved Road | ■ Trailhead | — U.S. Forest Service |
| ● Airstrip or Airport | ● Medical | ● Mobile Weather Unit | ● Completed Hand Line | ● Other | — Other | — Community Protection Line | — Wilderness |
| ● Helispot | ● Incident Command Post | ● Gate | ● Repeater | ● Repeater | — Completed Mixed Construction Line | — Aerial Hazard | |

0 0.25 0.5 1 Miles