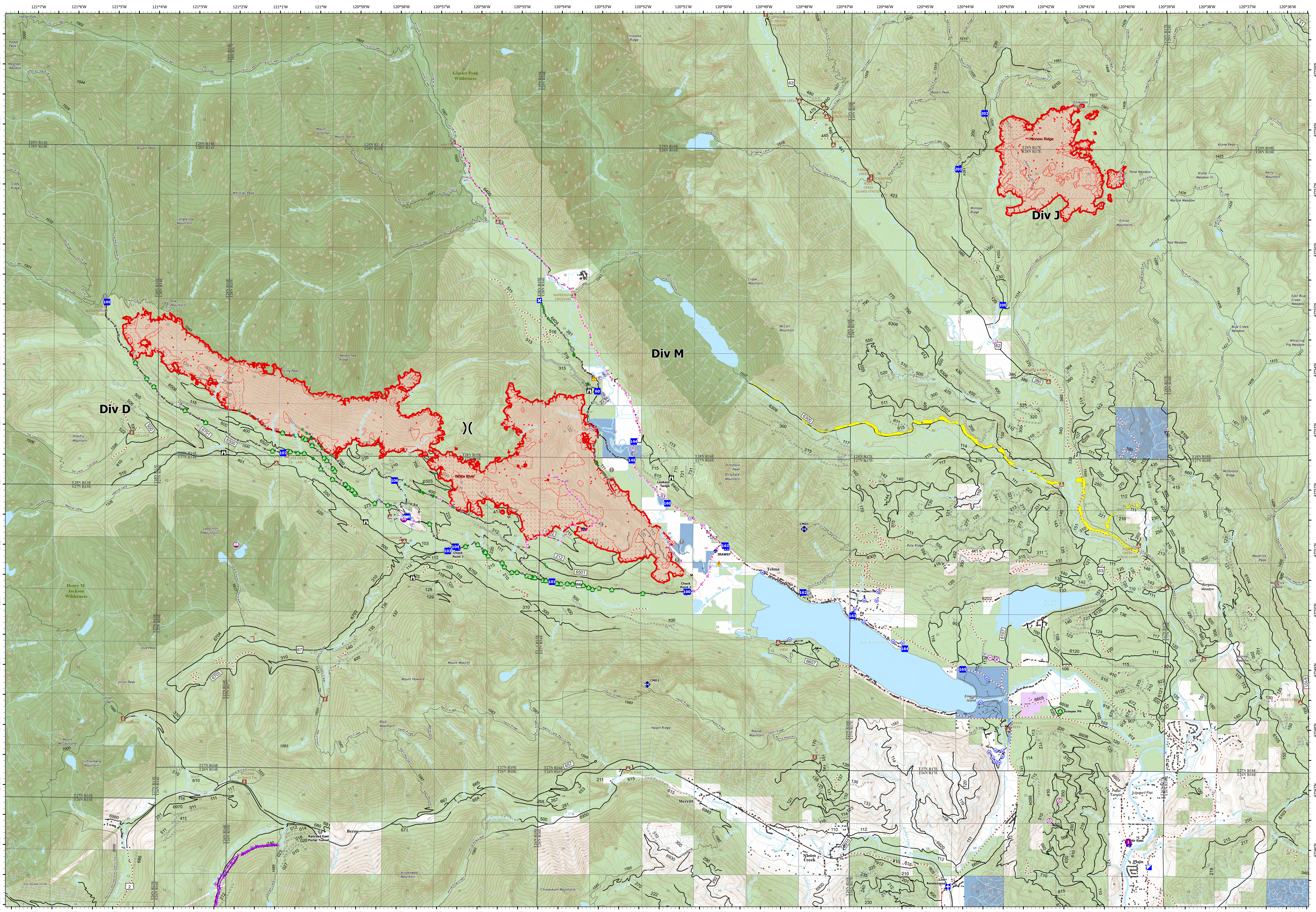


# Operations -



**White River**  
WA-OWF-000319  
7,992 acres

**Minnow Ridge**  
WA-OWF-000479  
2,006 acres

Acres as of DRTI 202209278 1230 PDT  
Map Updated: 9/30/2022 5:11 PM

- |                           |                           |                        |                       |                       |                                     |                       |                             |
|---------------------------|---------------------------|------------------------|-----------------------|-----------------------|-------------------------------------|-----------------------|-----------------------------|
| ● IR Isolated Heat Source | ● Helibase                | ● Drop Point           | ● Gate                | ● Repeater            | — Completed Mixed Construction Line | ▲ Aerial Hazard       | — Community Protection Line |
| ● IR Intense Heat         | ● Sling Site              | ● Closure              | ● Bridge              | ● Hazard              | — Completed Road as Line            | ■ Structures          | — Wilderness                |
| ● IR Scattered Heat       | ● Unimproved Landing Area | ● Lookout              | ● Repair Point        | ● Water Source        | — Planned Hand Line                 | ■ Campground          | — Local Government          |
| ● Aerial Hazard           | ● Division Break          | ● Hot Spot - Spot Fire | ● Landing or Log Deck | ● Pump                | — Planned Road as Line              | ■ Day Use/Picnic      | — Private                   |
| ● Airstrip or Airport     | ● Medical                 | ● Value at Risk        | ● Culvert             | ● Water Tank          | — Access or Improved Road           | ■ Trailhead           | — State                     |
| ● Helispot                | ● Incident Command Post   | ● Other                | ● Mobile Weather Unit | — Completed Hand Line | — Other                             | ■ U.S. Forest Service |                             |

Map navigation and scale information:

- North arrow pointing up.
- QR code for additional information.
- Scale bar showing 0, 0.25, 0.5, and 1 mile.
- U.S. Forest Service logo.