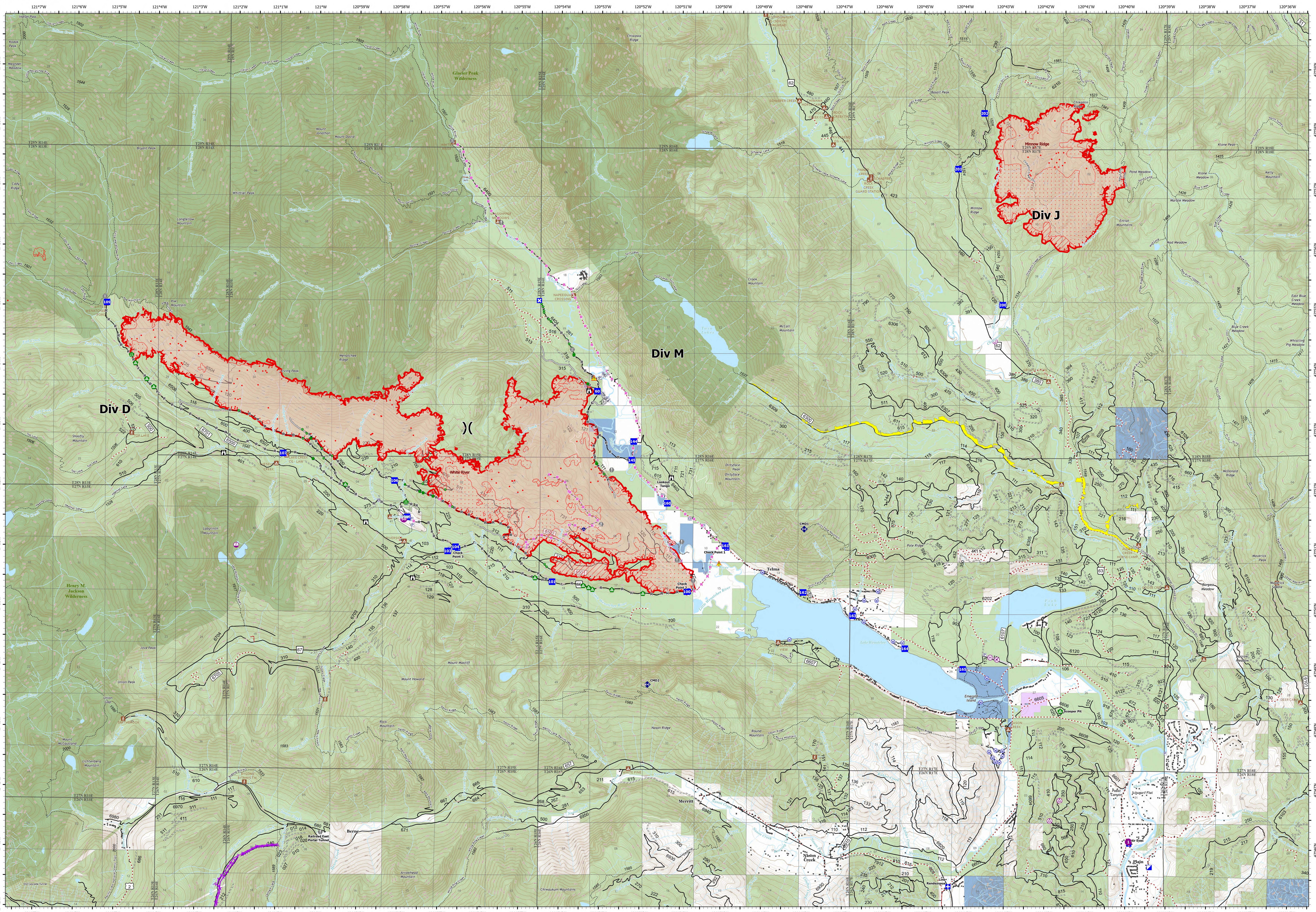


Operations -



White River
WA-OWF-000319
9,579 acres

Minnow Ridge
WA-OWF-000479
2,867 acres

Acres as of Bode Intel 10/4/22 @ 2132 PDT
Map Updated: 10/5/2022 12:50 PM

- | | | | | | | | | | |
|---------------------------|---------------------------|-------------------------|------------------------|-----------------------|----------------|--------------------------|---------------------------|-----------------------------|-----------------------|
| ● IR Isolated Heat Source | ● Helispot | ● Medical | ● Hot Spot - Spot Fire | ● Road Repair | ● Repeater | MA Completed Fuel Break | — Access or Improved Road | ● Day Use/Picnic | ● Private |
| ● IR Intense Heat | ● Helibase | ● Incident Command Post | ● Value at Risk | ● Repair Point | ● Hazard | — Completed Hand Line | — Other | ● Trailhead | ● State |
| ● IR Scattered Heat | ● Sling Site | ● Drop Point | ● Gate | ● Landing or Log Deck | ● Water Source | — Completed Road as Line | ● Aerial Hazard | ● Community Protection Line | ● U.S. Forest Service |
| ● Aerial Hazard | ● Unimproved Landing Area | ● Closure | ● Other | ● Culvert | ● Pump | ● Planned Hand Line | ● Wilderness | ● Wilderness | ● Local Government |
| ● Airstrip or Airport | ● Division Break | ● Lookout | ● Bridge | ● Mobile Weather Unit | ● Water Tank | ● Planned Road as Line | ● Campground | | |

0 0.25 0.5 1 Miles