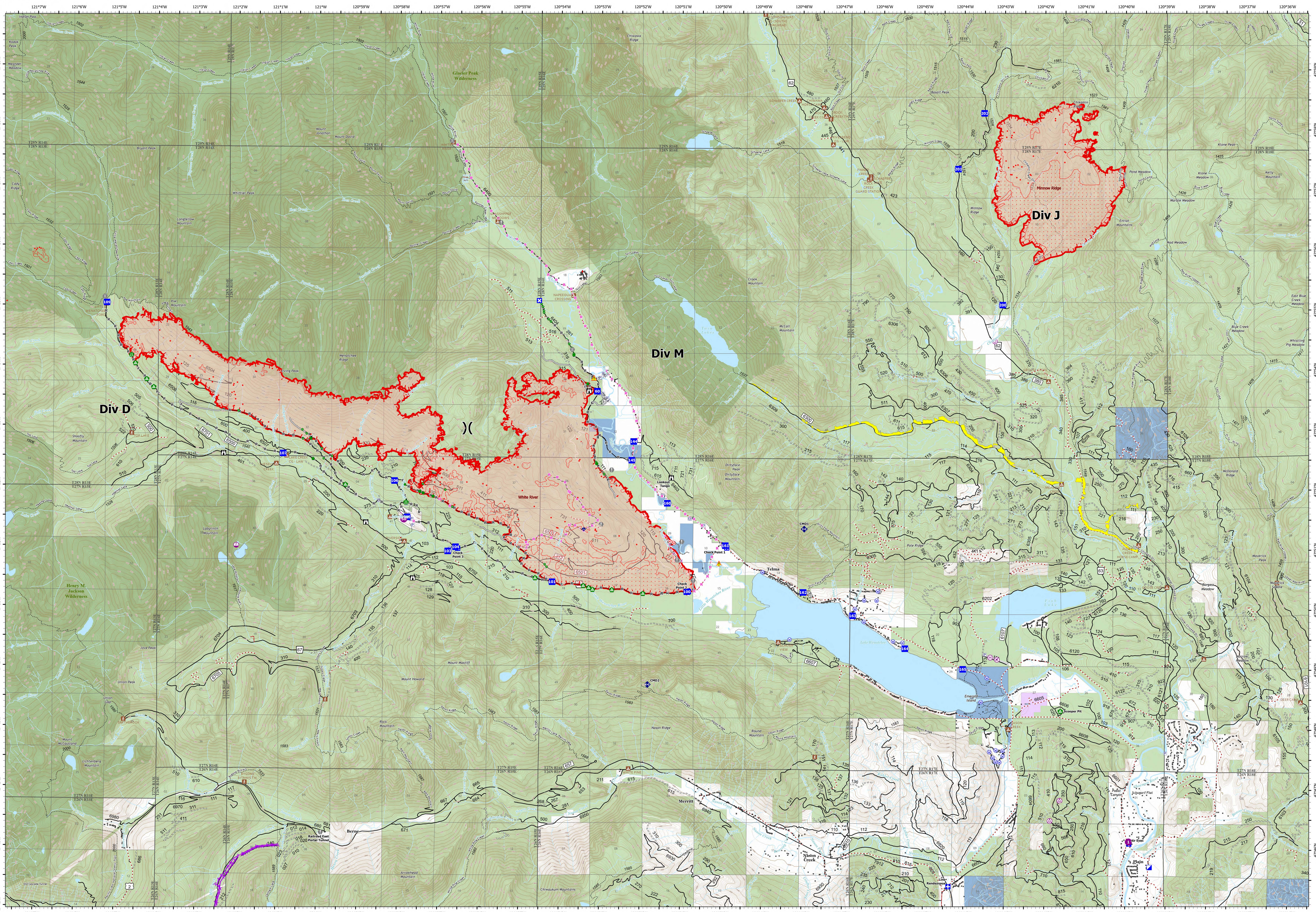


Operations -



White River
WA-OWF-000319
10,534 acres

Minnow Ridge
WA-OWF-000479
3,163 acres

Acres as of IR 10/7/22 @ 2007 PDT
Map Updated: 10/8/2022 11:00 AM

- | | | | | | | | | | |
|---------------------------|---------------------------|-------------------------|------------------------|-----------------------|-----------------------|--------------------------|---------------------------|-----------------------------|-----------------------|
| • IR Isolated Heat Source | • Airstrip or Airport | ⌘ Division Break | ⌘ Lookout | • Bridge | • Mobile Weather Unit | • Water Tank | • Planned Road as Line | • Campground | • Local Government |
| • Possible IR Heat Source | • Helispot | • Incident Command Post | • Hot Spot - Spot Fire | • Road Repair | • Repeater | • Completed Fuel Break | • Access or Improved Road | • Day Use/Picnic | • Private |
| • IR Intense Heat | • Helibase | • Drop Point | • Value at Risk | • Repair Point | • Hazard | • Completed Hand Line | • Other | • Trailhead | • State |
| • IR Scattered Heat | • Sling Site | • Closure | • Gate | • Landing or Log Deck | • Water Source | • Completed Road as Line | • Aerial Hazard | • Community Protection Line | • U.S. Forest Service |
| • Aerial Hazard | • Unimproved Landing Area | | | • Culvert | • Pump | • Planned Hand Line | • Structures | • Wilderness | |

0 0.25 0.5 1 Miles